

# XR (H/V) **EXCEL**

(1000 to 1200 cfm)  
Drill More. Get More.



High Penetration, Low Fuel Costs & Trouble Free



*Sustainable Productivity*

  
جهان کمپرسور  
Jahan Compressor

**Atlas Copco**



### **Aesthetically Superior**

Light weight (4300 kgs),  
closed door operation  
and less noise



### **Safety First**

Heat protection and quality  
cladding around the exhaust  
which is placed at a  
safe height



### **Easy Accessibility**

All service points accessible  
through one door.  
Air Filter, Separator Element,  
and Oil Filters easily replaceable



### **User Friendly**

Radiator and Oil Cooler in a  
single panel and kept side by side.  
Light weight, compact and  
easy to clean / service. Designed  
for 50°C ambient



### **Spacious Canopy**

Spacious canopy enables  
easy serviceability,  
& less number of hoses  
reduce maintenance cost



### **Power Packed Engine**

Cummins NTA-855-BC engine  
with 417 HP

# XR (H/V) (1000 to 1200 cfm) **EXCEL**

## Drill More. Get More.

Atlas Copco is the one of the leading manufacturers of portable compressed air machines in the world. Used in a wide variety of industries, Atlas Copco has developed a set of machines that successfully walk the line between size, output and capacity.



The demand for high pressure compressors continues to rise. These compressors are particularly adapted for deep water well drilling under harsh conditions. The frame is rugged and built to last. It is perfect for building sites, both in helping lay the foundations of buildings, and ground consolidation, in addition to pipeline cleaning.

- Performance
- Versatility
- Service Efficiency
- Transport Efficiency
- Resale Value
- Safety



## Enduring Performance

Compressor oil capacity of 67 liters.  
Synthetic oil increases the life of screw elements, improves compression and have longer replacement interval



## Compact Storage

Provision for keeping all maintenance, parts manuals, service reports and key in a compact box



## Easy Access

Door enabling easy access for replacement of Fan Belt, cleaning of Radiator & Oil Cooler



## Operator Panel

The Panel has all important gauges including inter-stage pressure and inter-stage temperature gauges



## Unique Design

Unique un-loader design lowers engine rpm during partial load by keeping air intake fully open. Hence fuel consumption is low at partial load



## Superior Technology

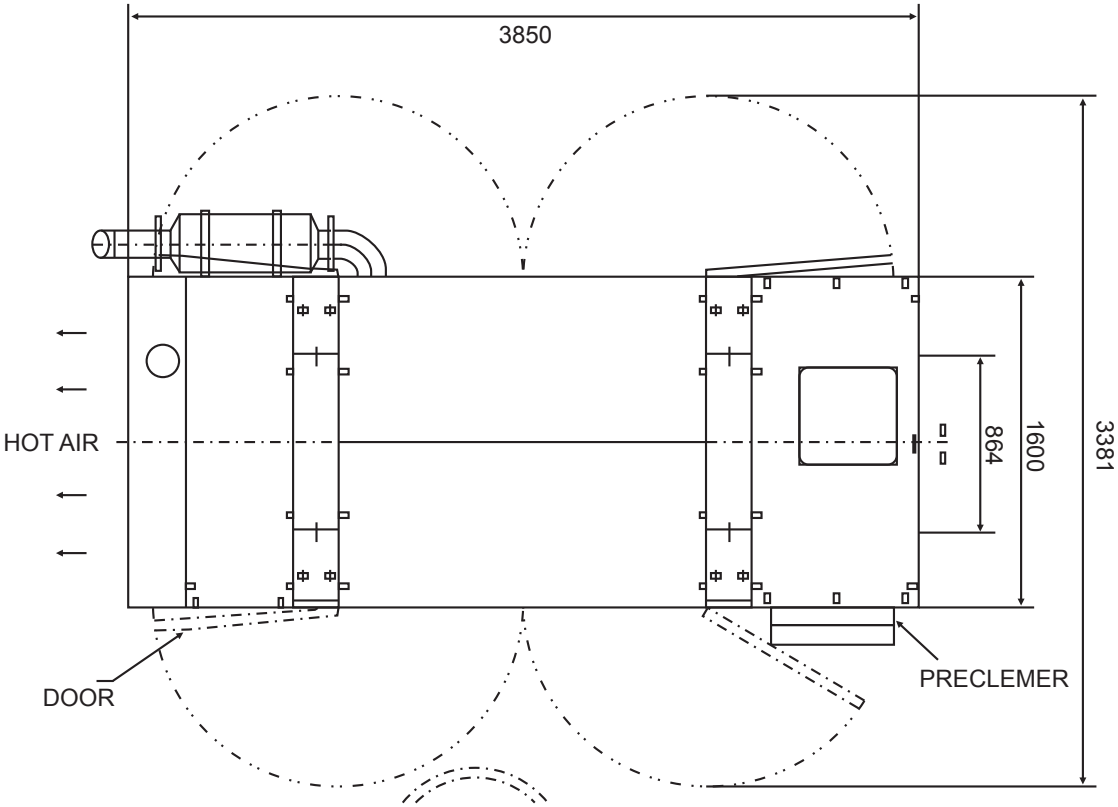
Efficient asymmetrical screw profile



### Technical Specifications

|                              | XRH 1000 Excel       | XRH 1100 Excel       | XRV 1200 Excel       |
|------------------------------|----------------------|----------------------|----------------------|
| Flow (l/s)                   | 490                  | 519                  | 568                  |
| CFM                          | 1035                 | 1100                 | 1200                 |
| Operating Pressure (psig)    | 275                  | 300                  | 330                  |
| Length (mm)                  | 3580                 | 3580                 | 3580                 |
| Width (mm)                   | 1600                 | 1600                 | 1600                 |
| Height (mm)                  | 1865                 | 1865                 | 1865                 |
| Dry Weight (Kg)              | 4100                 | 4100                 | 4100                 |
| Engine Make / Model          | Cummins / NTA 855 BC | Cummins / NTA 855 BC | Cummins / NTA 855 BC |
| No. of Cylinders             | 6                    | 6                    | 6                    |
| Engine Full Load Speed (rpm) | 1800                 | 1800                 | 1900                 |

### Dimensions



Length – 3850 mm : Width – 1600 mm : Height – 1865 mm

## Waterwell Drilling



### ISO 9001

From design to production and delivery  
Atlas Copco compressors adhere to the  
ISO 9001 Management Systems requirements.



### ISO 14001

Atlas Copco's Environmental Management System  
forms an Integral part of each business process.

## Atlas Copco Compressor Sales

(A Division of Atlas Copco (India) Ltd.)

Sveanagar, Dapodi, Pune 411012.

Phone: 020 - 3072 2222 Fax: 020 - 3985 7009

Email : [info.compressor@in.atlascopco.com](mailto:info.compressor@in.atlascopco.com)

Reach us @ 1800 200 0030

### CUSTOMER CARE CENTRES

|   | PHONE          | MOBILE         | FAX            |
|---|----------------|----------------|----------------|
| 406, Baleshwar Avenue, Opp. Rajpath Club, Sarkej-Gandhinagar Highway, <b>AHMEDABAD</b> 380 015.                       | (079) 32445433 | (0) 9327008070 | (079) 26872547 |
| 1-A, 1st Floor, Peenya Industrial Area, 2nd Phase, <b>BANGALORE</b> 560 058.  | (080) 39280164 | (0) 9379105943 | (080) 39280145 |
| SCO 811, 1st Floor, NAC, Manimajra, <b>CHANDIGARH</b> 161 101.  | (0172) 3934922 | (0) 9316915466 | (0172) 3934911 |
| "SHYAMALA TOWERS" 8th Floor, 136, Arcot Road, Saligramam, <b>CHENNAI</b> 600 093.                                     | (044) 39156000 | (0) 9362724009 | (044) 39156004 |
| 6-3-1191, 2nd Floor, Brij Tarang, Greenland, Begumpet, <b>HYDERABAD</b> 500 016.                                      | (040) 32949090 | (0) 9394044056 | (040) 23417923 |
| Trinity Plaza, 2nd Floor, West Wing, 841 / 1A, Topasia Road (South), <b>KOLKATA</b> 700 046.                          | (033) 22851042 | (0) 9331411141 | (033) 22851043 |
| Mahatma Gandhi Memorial Building, 2nd Floor, Netaji Subhash Road, <b>MUMBAI</b> 400 002.                              | (022) 32949090 | (0) 9323177392 | (022) 22811463 |
| Unitech Business Park, Tower 'A', First Floor, Sector - 41, <b>GURGAON</b> 122 001.                                   | (0124) 3027945 | (0) 9312967925 | (0124) 3027924 |
| 2nd Floor, Tellus Technologies Pvt. Ltd. 209/1B/1A, Range Hills Road, <b>PUNE</b> 411 020.                            | (020) 32949090 | (0) 9371060934 | (020) 30257129 |
| 104/1, Pallipalayam Main Road, Rajagoundampalayam, Suryampalayam PO, <b>TIRUCHENGODE</b> 637 211, T.N. (04288) 254575 | (04288) 254575 | (0) 9360543609 | (04288) 254575 |

**DEALERS :** Ahmedabad, Aizwal, Amritsar, Angul, Asansol, Aurangabad, Bangalore, Barbil, Bellary, Bhopal, Bhubaneswar, Chandigarh, Chennai, Coimbatore, Daman, Dehradun, Dhanbad, Faridabad, Ghaziabad, Gwalior, Goa, Gurgaon, Hyderabad, Indore, Jaipur, Jammu, Jamshedpur, Jhansi, Kanpur, Kolhapur, Kolkata, Kullu, Kunnathur, Ludhiana, Melur (Madurai), Mumbai, Nagpur, Nasik, New Delhi, Noida, Ongole, Pathankot, Pondicherry, Pune, Raipur, Ranchi, Rourkela, Salem, Siliguri, Srinagar, Surat, Tezpur, Udaipur, Visakhapatnam, Kathmandu (Nepal), Phuntsholing (Bhutan).