

CS 75
CS 90

A 21

B 23

C 20

D 24/25



KAESER COMPRESSORS, Inc.

239 Industrial Drive • P.O. Box 7416 • Fredericksburg, Virginia 22 404
Tel. (703) 898-5500 • Fax. (703) 898-5520

I N D E X

Page
1

| | | |
|------------|---------------------------------|---|
| Section 1: | INTRODUCTION | |
| | 1. Foreword | 2 |
| | 2. Description | 2 |
| | 3. To order parts | 2 |
| | 4. Recommended spare parts list | 2 |
| | 5. Caution | 2 |

| | | | |
|------------|--|-----------------|-------|
| Section 2: | PARTS LIST | Code/Drawing No | |
| | Frame, casing | A20 | 3 |
| | Driving system | B20 | 4 |
| | Oil tubes, vent lines | C20 | 5 |
| | Control tubes, compressed air tubes | D21 | 6 - 7 |
| | Vent valve | 2.1128.0 | 8 |
| | Inlet valve | 4.7387.1 | 9 |
| | Minimum pressure check valve | 4.7341.0 | 10 |
| | Check valve | 4.7393.2 | 11 |
| | Combination valve | 4.8870.1 | 12 |
| | Control valve | 2.0712.1 | 13 |
| | Oil stop valve | 2.0704.0 | 14 |

| | | |
|------------|------------------------------|---------|
| Section 3: | Recommended spare parts list | 15 - 18 |
|------------|------------------------------|---------|

Caution:
If not otherwise indicated all measurements in mm
R = Withword pipe thread
G = Pipe thread ISO 228
M = Metric ISO thread

SECTION 1

I N T R O D U C T I O N

1. FOREWORD

This manual is provided for the operator's use and reference when ordering parts. An illustrated parts breakdown is included for identification. All compressor parts meet the manufacturer's highest quality used in the manufacture of the original equipment.

2. DESCRIPTION

The parts breakdown lists every part, assembly and sub-assembly of the compressor unit. Each part is identified with a number. The location of and relationship between parts are clearly illustrated. Questions pertaining to the number, description and quantities needed for each assembly are dealt with in the following pages.

3. TO ORDER PARTS

When ordering parts, furnish the following information to prevent any error:

- Model designation and serial number of the unit as shown on compressor nameplate.
- Reference number, part number, description and quantity required as listed.

4. RECOMMENDED SPARE PARTS LIST

A recommended spare parts list is provided at the end of this manual. The list indicates the description, part number, the quantity used in the compressor, and minimum quantities which should be carried to ensure maximum protection of the compressor. The recommended spare parts inventory to be kept on hand varies according to the location of the nearest distributor, and is broken down as follows:

- A. Local distributor
- B. Nearby distributor
- C. Remote distributor.

5. CAUTION

NEVER use parts other than the ones approved by the manufacturer and listed in this parts manual. The use of parts not approved by the manufacturer may result in hazardous conditions, over which the manufacturer has no control, bodily injury, and damage to the compressor unit. Such action would invalidate the manufacturer's warranty of the compressor unit.

SECTION 1

I N T R O D U C T I O N

1. FOREWORD

This manual is provided for the operator's use and reference when ordering parts. An illustrated parts breakdown is included for identification. All compressor parts meet the manufacturer's highest quality used in the manufacture of the original equipment.

2. DESCRIPTION

The parts breakdown lists every part, assembly and sub-assembly of the compressor unit. Each part is identified with a number. The location of and relationship between parts are clearly illustrated. Questions pertaining to the number, description and quantities needed for each assembly are dealt with in the following pages.

3. TO ORDER PARTS

When ordering parts, furnish the following information to prevent any error:

- Model designation and serial number of the unit as shown on compressor nameplate.
- Reference number, part number, description and quantity required as listed.

4. RECOMMENDED SPARE PARTS LIST

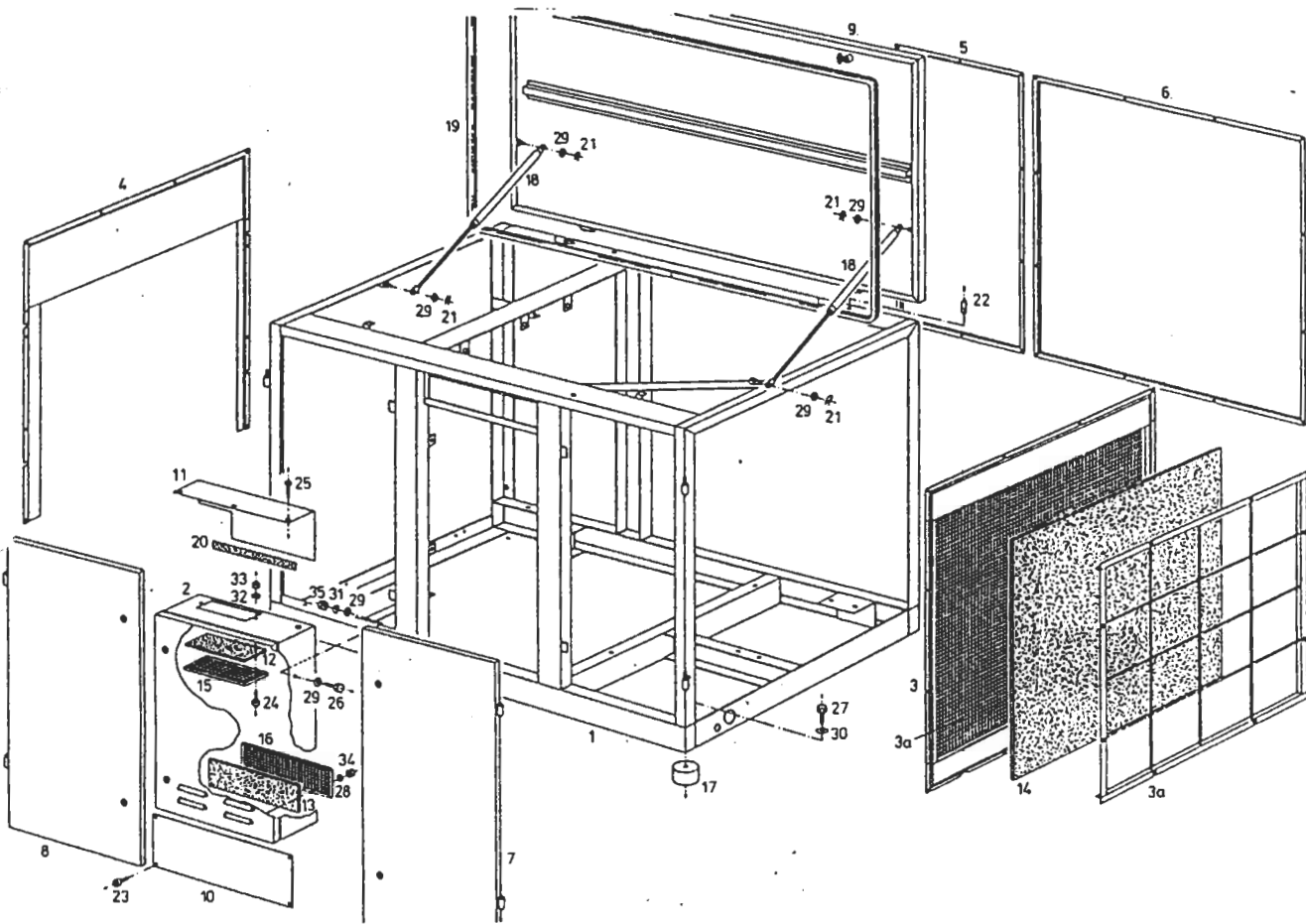
A recommended spare parts list is provided at the end of this manual. The list indicates the description, part number, the quantity used in the compressor, and minimum quantities which should be carried to ensure maximum protection of the compressor. The recommended spare parts inventory to be kept on hand varies according to the location of the nearest distributor, and is broken down as follows:

- A. Local distributor
- B. Nearby distributor
- C. Remote distributor.

5. CAUTION

NEVER use parts other than the ones approved by the manufacturer and listed in this parts manual. The use of parts not approved by the manufacturer may result in hazardous conditions, over which the manufacturer has no control, bodily injury, and damage to the compressor unit. Such action would invalidate the manufacturer's warranty of the compressor unit.

Frame, Casing
CS 75, CS 90 type



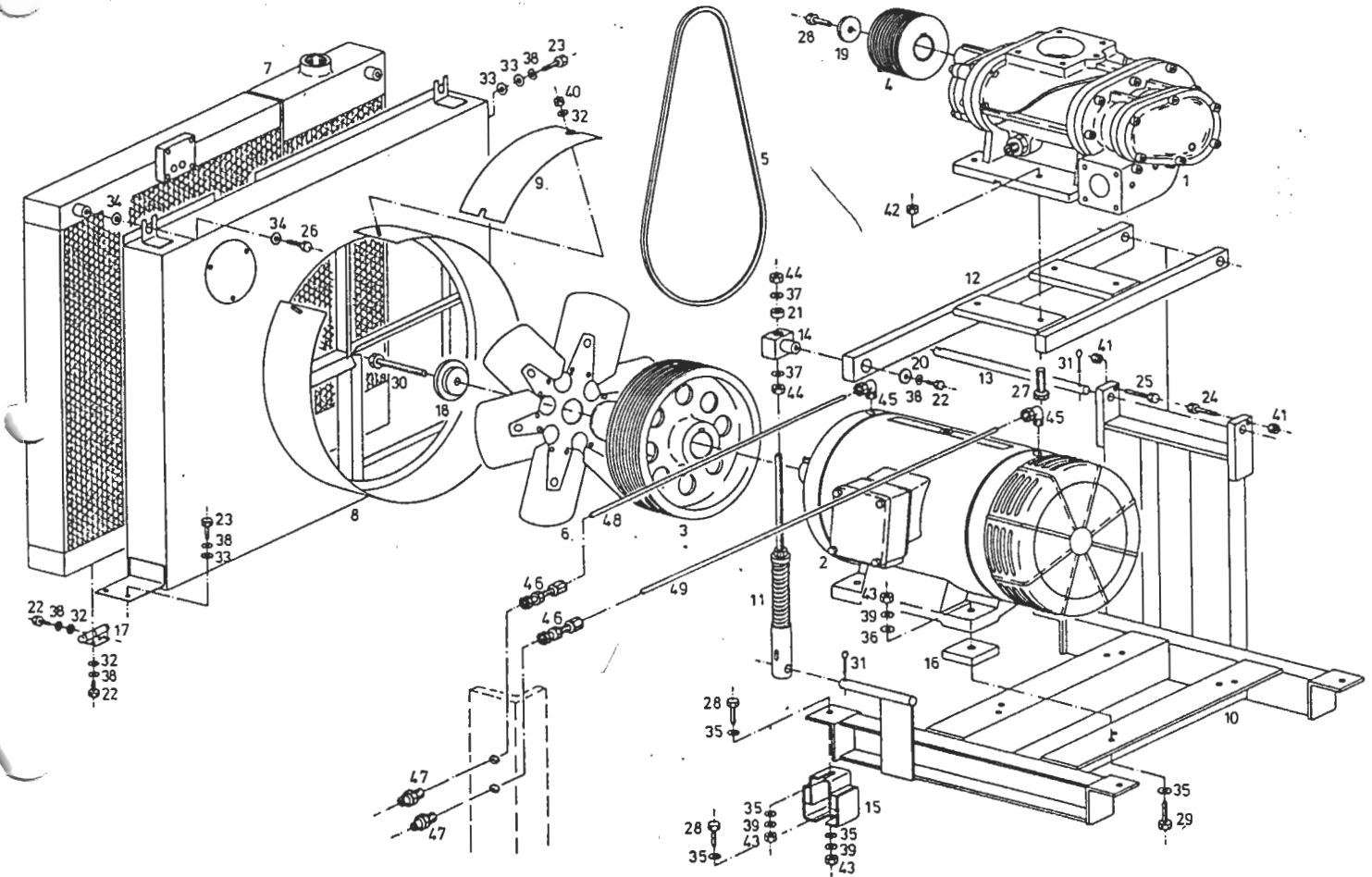
| Ref. | Qty | Part No. | Description |
|------|-----|----------|---|
| 1 | 1 | 4.9321.0 | Frame |
| 1) 2 | 1 | 7.2307.2 | Controller |
| 2) 2 | 1 | 7.2308.2 | Controller |
| 3 | 1 | 4.7011.2 | Casing complete with 3 a |
| 3a | 1 | 6.1944.1 | Quick-change frame |
| 4 | 1 | 4.8229.0 | Casing |
| 5 | 1 | 4.8227.0 | Casing |
| 6 | 1 | 4.8228.0 | Casing |
| 7 | 1 | 4.8225.0 | Door |
| 8 | 1 | 4.8226.0 | Door |
| 9 | 1 | 4.8290.0 | Door |
| 10 | 1 | 4.8224.0 | Cover sheet |
| 11 | 1 | 4.8305.0 | Cover plate |
| 12 | 1 | 4.7349.0 | Filter mat |
| 13 | 1 | 4.7347.0 | Filter mat |
| 14 | 1 | 6.1945.0 | Filter mat |
| 15 | 1 | 4.7348.0 | Covering grating |
| 16 | 1 | 4.7346.0 | Covering grating |
| 17 | 4 | 6.1347.0 | Anti-vibration pads dia 315/18"x 315/18" |
| 18 | 2 | 5.1331.0 | Gas spring |
| 19 | 1 | 5.1398.0 | Gasket profile 212" |
| 20 | 1 | 5.1408.0 | Froth rubber band 13" |
| 21 | 4 | 5.1330.0 | Split pin |
| 22 | 1 | 6.2344.0 | Stud M 10 x 35 |
| 23 | 48 | 6.0916.0 | Philips head screw M 5 x 10 |
| 24 | 2 | 6.0901.0 | Philips head screw M 5 x 15 |
| 25 | 3 | 6.0986.0 | Sheel metal screw 3,5 x 9,5 |
| 26 | 4 | 6.0726.0 | Hex. hd. screw M 8 x20 |
| 27 | 4 | 6.2203.0 | Hex. hd. screw M 16 x 20 |
| 28 | 2 | 6.0622.0 | Washer |

| Ref. | Qty | Part No. | Description |
|------|-----|----------|---------------------|
| 29 | 12 | 6.0623.0 | Washer |
| 30 | 4 | 6.0627.0 | Washer |
| 31 | 4 | 6.0653.0 | Spring washer |
| 32 | 2 | 6.0660.0 | Toothed lock washer |
| 33 | 2 | 6.0681.0 | Hex. nut M 5 |
| 34 | 2 | 6.0682.0 | Hex.nut M 6 |
| 35 | 4 | 6.0684.0 | Hex. nut M 8 |

1) Compressor Unit CS 75
2) Compressor Unit CS 90

A21

Driving system CS 75/90 type

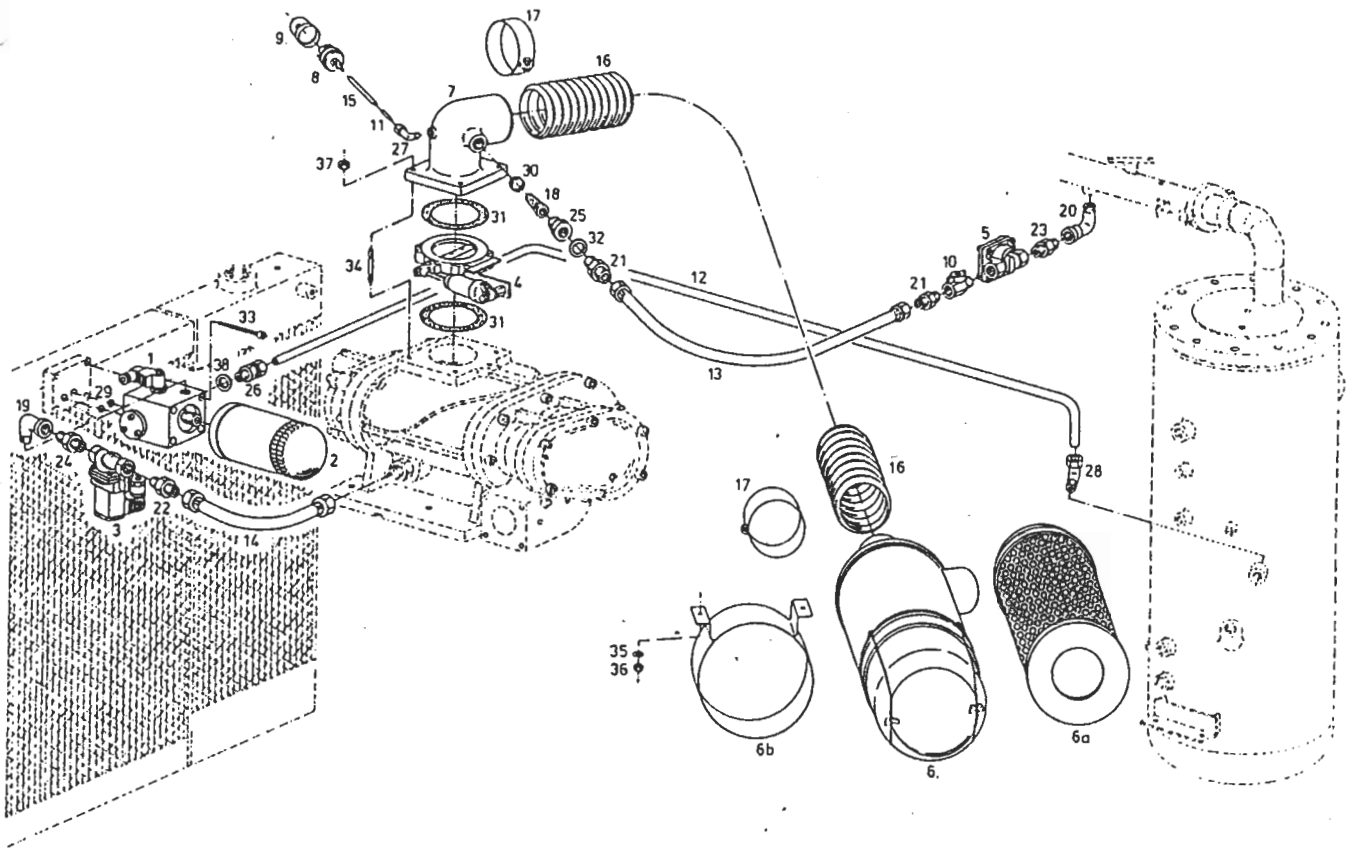


| Ref. | Qty. | Part No. | Description |
|------|------|--------------|---------------------------------|
| 1-3 | 1 | 1.3851.4 | Screw Compressor Sigma 2 |
| 4-6 | 1 | 1.7105.0 | Screw Compressor Sigma 2c |
| 1-3 | 1 | 7.0910.1 | Motor, 3-phase 45 kW, 230/460 V |
| 4-6 | 1 | 7.0911.1 | Motor, 3-phase 55 kW, 230/460 V |
| 1-3 | 1 | 4.7285.1 | Motor pulley dia. 15 3/4" |
| 4-6 | 1 | 4.7282.1 | Motor pulley dia. 15 3/4" |
| 1) | 4 | 4.7286.1 | Compressor pulley dia. 7 3/64" |
| 2) | 4 | 4.7287.1 | Compressor pulley dia. 8 5/64" |
| 3) | 4 | 4.4292.0 | Compressor pulley dia. 9 7/32" |
| 4) | 4 | 2.0305.0 | Compressor pulley dia. 7 1/4" |
| 5) | 4 | 4.3523.0 | Compressor pulley dia. 8 7/8" |
| 6) | 4 | 2.6781.0 | Compressor pulley dia. 10 5/32" |
| 1) | 5 | 6.1432.0 | Set of v-belts |
| 2) | 5 | 6.2521.0 | Set of v-belts |
| 3) | 5 | 6.2521.0 | Set of v-belts |
| 4) | 5 | 6.1432.0 | Set of v-belts |
| 5) | 5 | 6.2521.0 | Set of v-belts |
| 6) | 5 | 6.2522.0 | Set of v-belts |
| 6 | 1 | 5.0685.0 | Fan wheel |
| 7 | 1 | 5.1073.30010 | Cooler |
| 8 | 1 | 4.8289.0 | Fan case |
| 9 | 1 | Sk 1418.73 | Cover plate |
| 10 | 1 | 4.8292.0 | Swing frame |
| 11 | 1 | 4.7566.1 | Balance adjustment |
| 12 | 1 | 4.7700.1 | Whip |
| 13 | 1 | 4.7572.1 | Shaft |
| 14 | 1 | 4.7565.1 | Pivot bearing |
| 15 | 4 | 6.1329.0 | Base of the machine |
| 1-3) | 4 | 4.7586.0 | Steel plate |
| 17 | 2 | 4.7428.0 | Hinge |
| 18 | 1 | 4.7591.1 | Centering disk |
| 19 | 1 | 4.7592.0 | Disk |
| 20 | 1 | 5.0428.0 | Disk |
| 21 | 2 | 6.2369.0 | Intermediate ring |

| Ref. | Qty. | Part No. | Description |
|------|------|----------|----------------------------|
| 22 | 9 | 6.0725.0 | Hex.-head screw M 8 x 15 |
| 23 | 5 | 6.0726.0 | Hex.-head screw M 8 x 20 |
| 24 | 1 | 6.0772.0 | Hex.-head screw M 10 x 55 |
| 25 | 1 | 6.0798.0 | Hex.-head screw M 10 x 70 |
| 26 | 2 | 6.0809.0 | Hex.-head screw M 12 x 30 |
| 27 | 4 | 6.2200.0 | Hex.-head screw M 14 x 60 |
| 28 | 9 | 6.0813.0 | Hex.-head screw M 16 x 40 |
| 4-6) | 29 | 6.0781.0 | Hex.-head screw M 16 x 70 |
| 1-3) | 29 | 6.2202.0 | Hex.-head screw M 16 x 90 |
| 30 | 1 | 6.0782.0 | Hex.-head screw M 20 x 150 |
| 31 | 3 | 6.0617.0 | Split pin |
| 32 | 10 | 6.0623.0 | Washer |
| 33 | 6 | 6.0531.0 | Washer |
| 34 | 4 | 6.0633.0 | Washer |
| 35 | 20 | 6.0627.0 | Washer |
| 36 | 4 | 6.2376.0 | Washer |
| 37 | 2 | 6.0629.0 | Washer |
| 38 | 14 | 6.0653.0 | Spring washer |
| 39 | 12 | 6.0657.0 | Spring washer |
| 40 | 2 | 6.0684.0 | Hex. nut M 8 |
| 41 | 2 | 6.0685.0 | Hex. nut M 10 |
| 42 | 4 | 6.0687.0 | Hex. nut M 14 |
| 43 | 12 | 6.0688.0 | Hex. nut M 16 |
| 44 | 2 | 6.0693.0 | Hex. nut M 20 |
| 45 | 2 | 6.0266.0 | Angle fitting WE 1/8 |
| 46 | 2 | 2.9136.0 | Bulkhead fitting |
| 47 | 2 | 2.9137.0 | Lubricating nipple |
| 48 | 1 | 9.0616.0 | Tecalan line dia. 6 |
| 49 | 1 | 9.0616.0 | Tecalan line dia. 6 |

1) Unit CS 75/110 psig 4) Unit CS 90/110 psig
 2) Unit CS 75/145 psig 5) Unit CS 90/145 psig
 3) Unit CS 75/190 psig 6) Unit CS 90/190 psig

Oil tubes, Vent lines
CS 75, CS 90 type



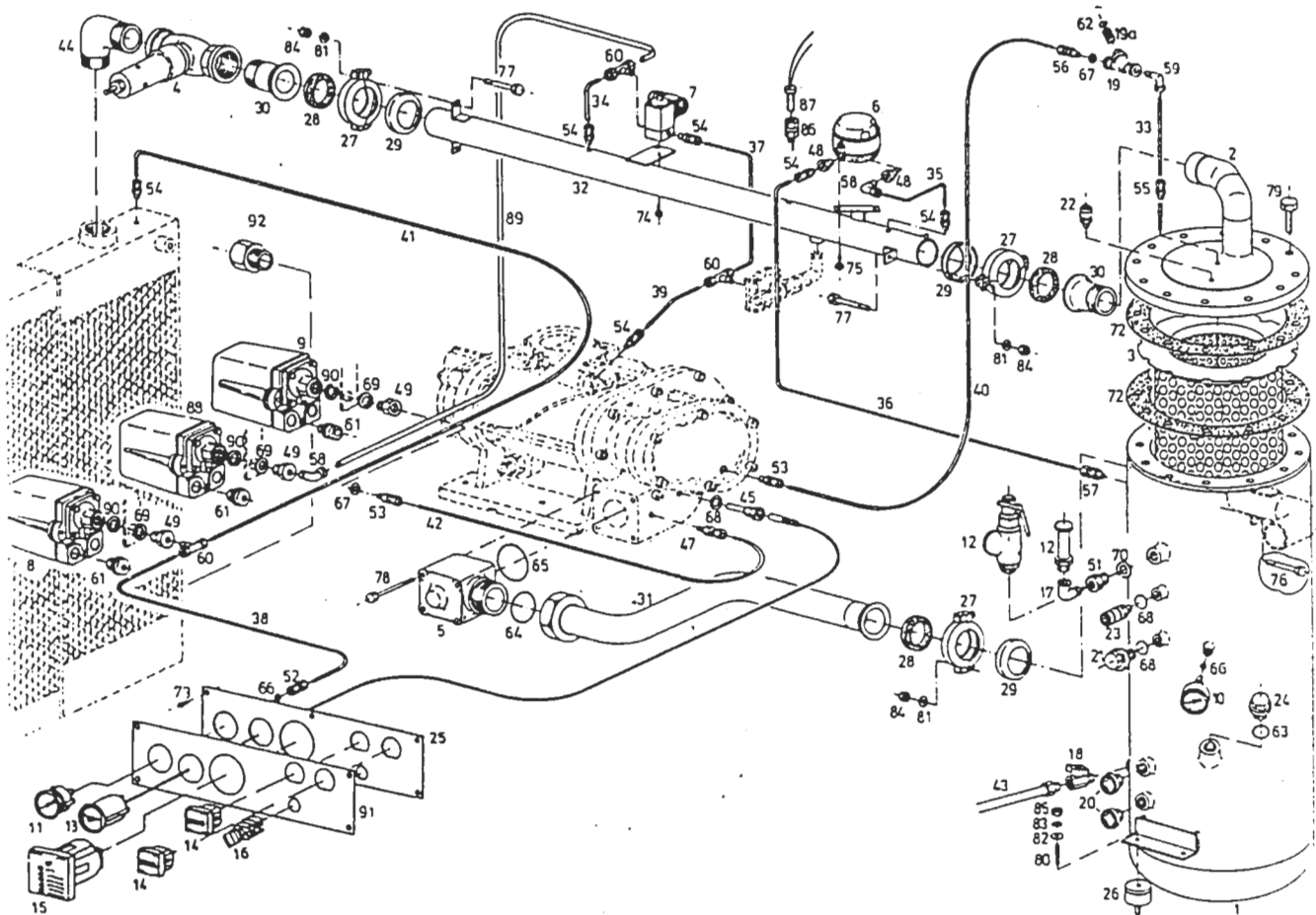
| Ref. | Qty | Part No. | Description |
|-------|-----|--------------|--|
| 1 | 1 | 4.8870.1 | Combination valve |
| 2 | 1 | 6.1981.0 | Filter cartridge |
| 3 | 1 | 2.0704.0 | Oil stop valve compl. pasted with Pos. 22 and 24 |
| 4 | 1 | 4.7387.1 | Inlet valve II |
| 5 | 1 | 2.1128.0 | Vent valve R 1/2 compl. pasted with Pos. 10 and 21 |
| 6 | 1 | 6.1918.0 | Air filter complete |
| 6a | 1 | 6.1997.0 | Filter cartridge |
| 6b | 1 | 6.1919.0 | Support for air filter |
| 7 | 1 | 4.7323.1 | Flange |
| 8 | 1 | 7.0294.0 | Vacuum switch (-19 11/16"wg) |
| 9 | 1 | 7.0298.0 | Protecting cap |
| 10 | 1 | 8.0259.0 | Ball cock R 1/2 |
| 11 | 1 | 4.1850.0 | Copper tube |
| 12 | 1 | 4.8293.0 | Tube |
| 13 | 1 | 8.0806.1 | Hose line R 1/2" x 22 41/64" |
| 14 | 1 | 8.1138.0 | Hose line R 3/4" x 27 9/16" |
| 15 | 1 | 4.1850.0 | Hose line dia. R 1/8" x 1 49/64" |
| 16 | 1 | 9.1013.00010 | Hose R 4" x 29 17/32" |
| 17 | 2 | 9.0658.0 | Hose clip |
| 18 | 1 | 6.1969.0 | Silencer |
| 19 | 1 | 6.1113.0 | Angle R 3/4" |
| 20 | 1 | 6.1062.0 | Elbow R 1/2" |
| 21 | 2 | 5.0784.0 | Double nipple R 1/2" |
| 22 | 1 | 5.0785.0 | Double nipple R 3/4" |
| 23 | 1 | 6.1030.1 | Fitting R 1/2" |
| 24 | 1 | 6.1033.0 | Fitting R 3/4" |
| 25 | 1 | 5.0925.0 | Reducing socket R 3/4" x R 1/2" |
| 26 | 1 | 6.0274.0 | Pipe fitting R 3/4" |
| 27 | 1 | 6.0251.0 | Angle fitting R 1/8" |
| 1) 28 | 1 | 6.0259.0 | Angle fitting R 3/4" |
| 2) 28 | 1 | 2.9899.00010 | Angle fitting R 3/4" |
| 29 | 2 | 5.1423.0 | O-ring dia 19 x 3 |

| Ref. | Qty | Part No. | Description |
|------|-----|----------|---|
| 30 | 1 | 5.0582.0 | Rubber sleeve |
| 31 | 2 | 5.0567.1 | Gasket for inlet valve |
| 32 | 1 | 6.1524.0 | Gasket R 1/2" |
| 33 | 4 | 6.2411.0 | Cylinder screw with inside hex. M 6 x 100 |
| 34 | 4 | 6.0873.0 | Stud M 10 x 70 |
| 35 | 2 | 6.0631.0 | Washer |
| 36 | 2 | 6.0684.0 | Hex. nut M 8 |
| 37 | 4 | 6.0685.0 | Hex. nut M 10 |
| 38 | 1 | 6.1527.0 | Gasket R 3/4" |

1) CS 75/90 unit 110 psig
2) CS 75/90 unit 145 psig
2) CS 75/90 unit 190 psig

C20

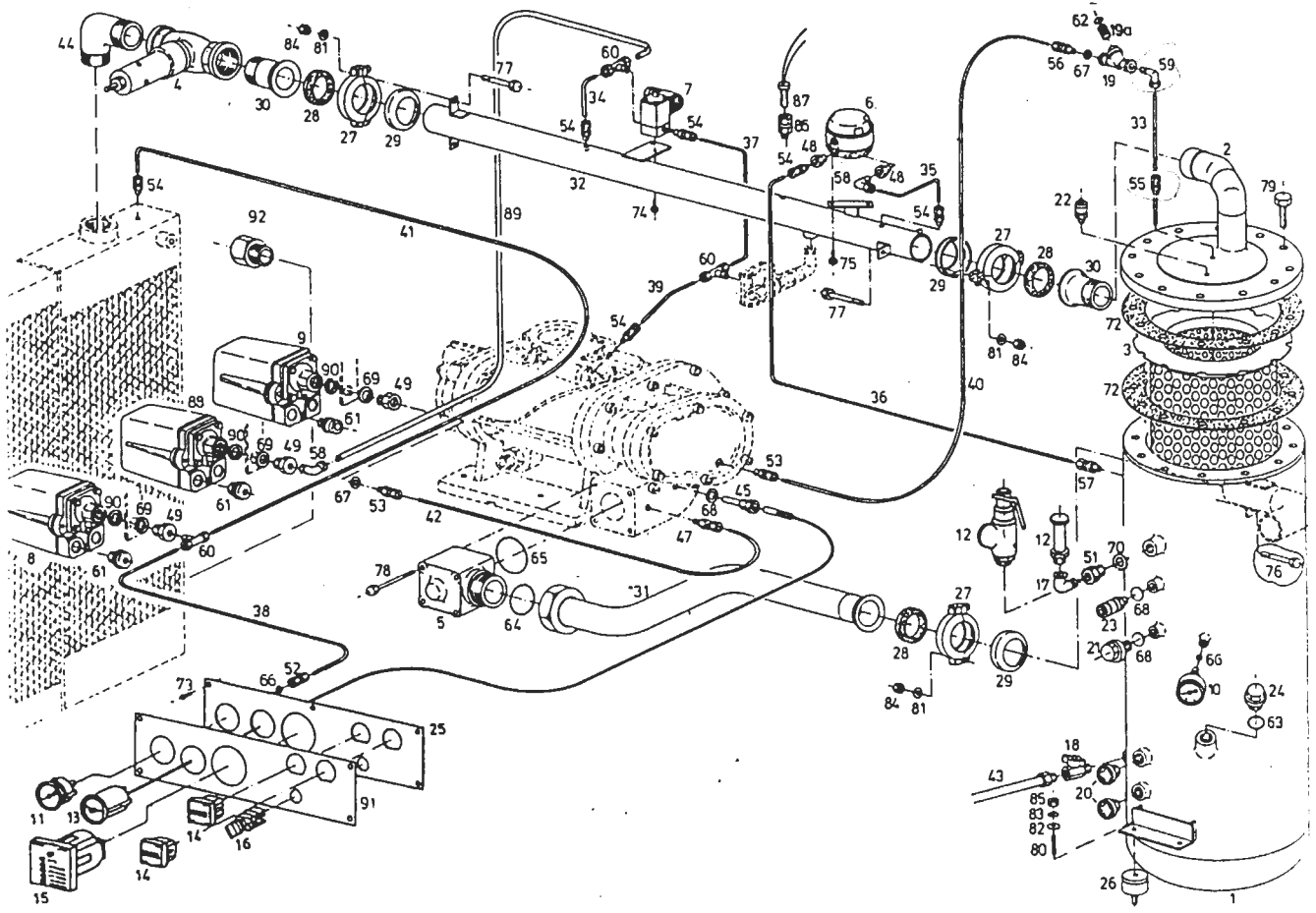
Control tubes,
Compressed air tubes
CS 75, CS 90 type



| Ref. | Qty. | Part No. | Description |
|---------|------|--------------|---|
| 1 | 1 | 3.6115.0 | Tank 30 gal. |
| 2 | 1 | 4.8270.1 | Cover |
| 3 | 1 | 6.1965.0 | Oil separator cartridge |
| 4 | 1 | 4.7341.0 | Minimum pressure check valve G 2 |
| 5 | 1 | 4.7393.2 | Check valve complete |
| 6 | 1 | 7.0217.0 | Difference pressure switch |
| 7 | 1 | 2.0712.1 | Control valve compl. pasted with Pos. 54 and 58 |
| 1,4) 8 | 1 | 7.0220.0 | Pressure switch 116 psig |
| 2,5) 8 | 1 | 7.0221.0 | Pressure switch 230 psig |
| 3,6) 8 | 1 | 7.0221.0 | Pressure switch 230 psig |
| 9 | 1 | 7.0219.0 | Pressure switch |
| 10 | 1 | 8.0018.0 | Pressure gauge 0-360/220 psig |
| 1,4) 11 | 1 | 8.0137.0 | Pressure gauge 0-145/110 psig |
| 2,5) 11 | 1 | 8.0136.0 | Pressure gauge 0-230/145 psig |
| 3,6) 11 | 1 | 8.0138.0 | Pressure gauge 0-230/190 psig |
| 1,4) 12 | 1 | 8.2057.0 | Safety valve |
| 2,5) 12 | 1 | 8.2068.0 | Safety valve |
| 3,6) 12 | 1 | 8.2072.0 | Safety valve |
| 13 | 1 | 8.0197.0 | Distance thermometer |
| 14 | 2 | 7.0784.0 | Hour meter |
| 15 | 1 | 7.2720.00040 | Malfunction relay |
| 16 | 1 | 7.2778.0 | Switch |
| 1,4) 17 | 1 | 6.3232.0 | Angle 3/4 NPT |
| 17 | 1 | 6.3208.0 | Angle 1/2 NPT |
| 18 | 1 | 8.0259.0 | Ball cock G 1/2 |
| 19 | 1 | 8.0381.0 | Dirt trap G 1/4 |
| 19a | 1 | 8.0394.0 | Dirt trap strainer |
| 20 | 2 | 6.0105.0 | Oil sight glass G 3/4 |
| 21 | 1 | 6.0501.0 | Locking screw G 3/8 |
| 22 | 1 | 9.0843.0 | Hose coupling G 1/4 |
| 23 | 1 | 9.0844.0 | Hose coupling G 3/8 |
| 24 | 1 | 6.0519.0 | Locking screw G 1 1/4 |

| Ref. | Qty. | Part No. | Description |
|---------|------|----------|----------------------------------|
| 25 | 1 | 4.7454.2 | Instrumental panel |
| 26 | 4 | 6.1335.0 | Anti-vibration pads dia. 50 x 45 |
| 27 | 3 | 5.1126.0 | Tension clamp complete |
| 28 | 3 | 5.1392.0 | Gasket ring |
| 29 | 3 | 5.1123.0 | Support for gasket ring |
| 30 | 3 | 4.8269.0 | Sleeve |
| 1-3) 31 | 1 | 2.7833.0 | Air tube |
| 4-6) 31 | 1 | 2.7946.0 | Air tube |
| 32 | 1 | 4.8299.0 | Air tube |
| 33 | 1 | 4.8298.0 | Suction tube |
| 34 | 1 | | Control tube dia. 1/4 x 9 1/2" |
| 35 | 1 | | Control tube dia. 1/4 x 8 1/4" |
| 36 | 1 | | Control tube dia. 1/4 x 21 1/4" |
| 37 | 1 | | Control tube dia. 1/4 x 18 1/2" |
| 38 | 1 | | Control tube dia. 1/4 x 10" |
| 39 | 1 | | Control tube dia. 1/4 x 17 3/4" |
| 40 | 1 | | Control tube dia. 1/4 x 23 5/8" |
| 41 | 1 | | Control tube dia. 1/4 x 51 1/8" |
| 42 | 1 | | Hose line G 1/4 x 31 1/2" |
| 43 | 1 | | Hose line G 1/2 x 59 1/16" |
| 44 | 1 | 8.0581.0 | Angle R 2 |
| 45 | 1 | 6.1099.0 | Protection sleeve R 3/8 |
| 46 | 1 | 5.0780.0 | Double nipple G 1/4 |
| 47 | 1 | 6.1716.0 | Pipe fitting M 12 x 1.5 |
| 48 | 2 | 5.0820.0 | Reducing socket G 1/4 x G 1/8 |
| 49 | 3 | 5.0846.0 | Reducing socket G 1/2 x G 1/8 |
| 1,4) 51 | 1 | 6.3203.0 | Reducing socket G 1 x G 3/4 |
| 51 | 1 | 6.3206.0 | Reducing socket G 1 x G 1/2 |
| 52 | 1 | 6.0390.0 | Pipe fitting G 1/4 |
| 53 | 2 | 6.0231.0 | Pipe fitting G 1/8 |
| 54 | 6 | 6.0246.0 | Pipe fitting G 1/8 |
| 55 | 1 | 4.8199.0 | Pipe fitting G 1/4 |
| 56 | 1 | 4.8335.0 | Pipe fitting G 1/4 |

Control tubes,
Compressed air tubes
CS 75, CS 90 type

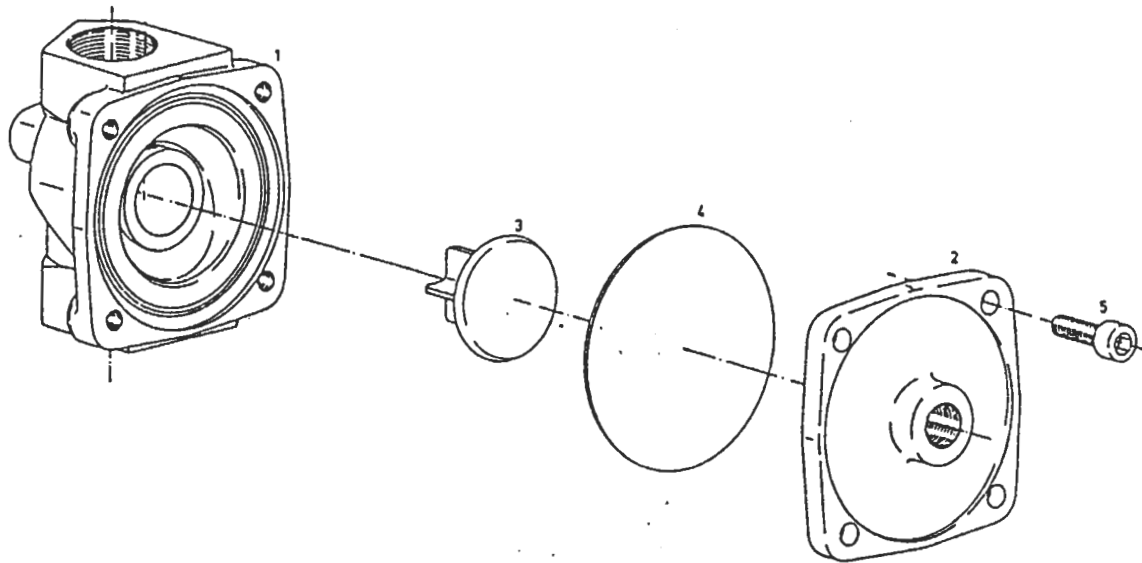


| Ref. | Qty. | Part No. | Description |
|------|------|----------|---------------------------------|
| 57 | 1 | 6.0229.0 | Pipe fitting G 1/4 |
| 58 | 2 | 6.0266.0 | Angle fitting G 1/8 |
| 59 | 1 | 6.0254.0 | Angle fitting G 1/4 |
| 60 | 2 | 6.0344.0 | T pipe fitting G 1/8 |
| 61 | 2 | 7.0673.0 | Plug PG 16 |
| 62 | 1 | 5.1443.0 | O-ring dia. 20 x 2.5 |
| 63 | 1 | 5.1455.0 | O-ring dia. 47 x 2 |
| 64 | 1 | 5.1422.0 | O-ring dia. 56 x 3 |
| 65 | 1 | 5.1462.0 | O-ring dia. 80 x 2 |
| 66 | 2 | 6.0470.0 | Gasket for pressure gauge R 1/4 |
| 67 | 12 | 6.0432.0 | Gasket G 1/4 |
| 68 | 3 | 6.1521.0 | Gasket G 3/8 |
| 69 | 3 | 6.1525.0 | Gasket G 1/2 |
| 71 | 1 | 6.1530.0 | Gasket G 1 |
| 72 | 2 | 5.0566.0 | Gasket for tank |
| 73 | 6 | 6.0914.0 | Philips head screw M 4 x 10 |
| 74 | 2 | 6.0860.0 | Fillister head screw M 4 x 8 |
| 75 | 2 | 6.0746.0 | Hex.-head screw M 6 x 10 |
| 76 | 2 | 6.2214.0 | Hex.-head screw M 8 x 50 |
| 77 | 4 | 6.0733.0 | Hex.-head screw M 8 x 60 |
| 78 | 4 | 6.0780.0 | Hex.-head screw M 10 x 110 |
| 79 | 12 | 6.0776.0 | Hex.-head screw M 24 x 50 |
| 80 | 4 | 5.0482.0 | Stud M 10 x 30 |
| 81 | 6 | 6.2374.0 | Washer |
| 82 | 4 | 6.2373.0 | Washer |
| 83 | 4 | 6.0654.0 | Spring washer |
| 84 | 6 | 6.2431.0 | Hex. nut M 8 |
| 85 | 4 | 6.0685.0 | Hex. nut M 10 |
| 86 | 1 | 6.0242.0 | Pipe fitting R 1/8 |
| 87 | 1 | 7.2712.0 | Internal thermal overload |
| 88 | 1 | 7.0218.0 | Pressure switch |
| 89 | 1 | | Control tube |
| 90 | 3 | 6.0439.0 | Gasket G 1/2 |

| Ref. | Qty. | Part No. | Description |
|------|------|--------------|-----------------------------------|
| 91 | 1 | 5.2298.00030 | Foil label |
| 92 | 1 | 4.4447.0 | Adapter G 2 x 2 NPT |
| 1) | | | Compressor Unit CS 75 110 psig |
| 2) | | | Compressor Unit CS 75 145 psig |
| 3) | | | Compressor Unit CS 75 190 psig |
| 4) | | | Compressor Unit CS 90 110 psig |
| 5) | | | Compressor Unit CS 90 145 psig |
| 6) | | | Compressor Unit CS 90 190 psig |

Vent valve
2.1128.0

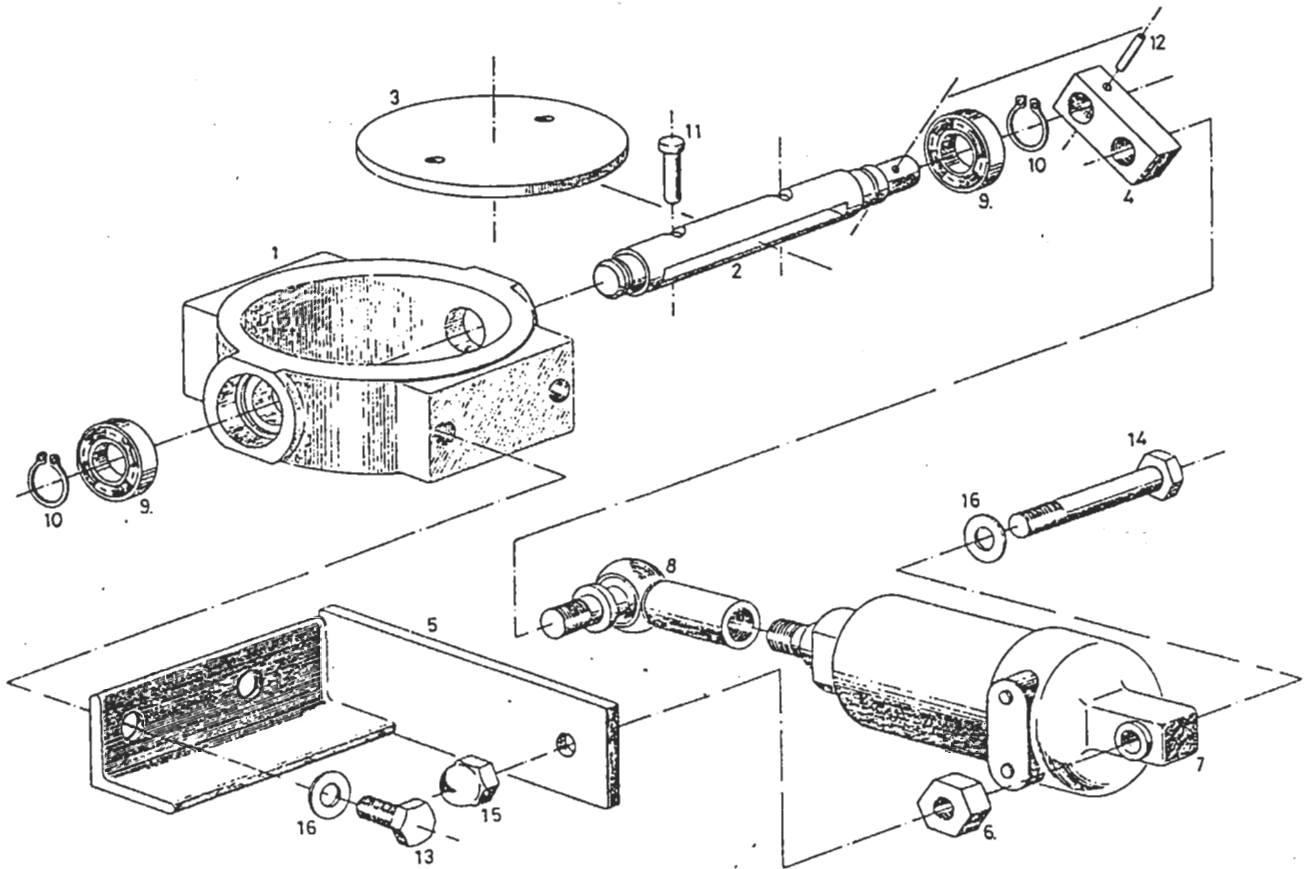
KAESER
COMPRESSORS



| Ref. | Qty. | Part No. | Description |
|------|------|----------|---|
| 1 | 1 | 5.0989.0 | Valve body |
| 2 | 1 | 5.0997.0 | Cover |
| 3 | 1 | 4.9026.0 | Piston complete |
| 4 | 1 | 5.0999.0 | Diaphragm |
| 5 | 4 | 6.2408.0 | Cylinder screw with inside hex. M 5 x 12 |

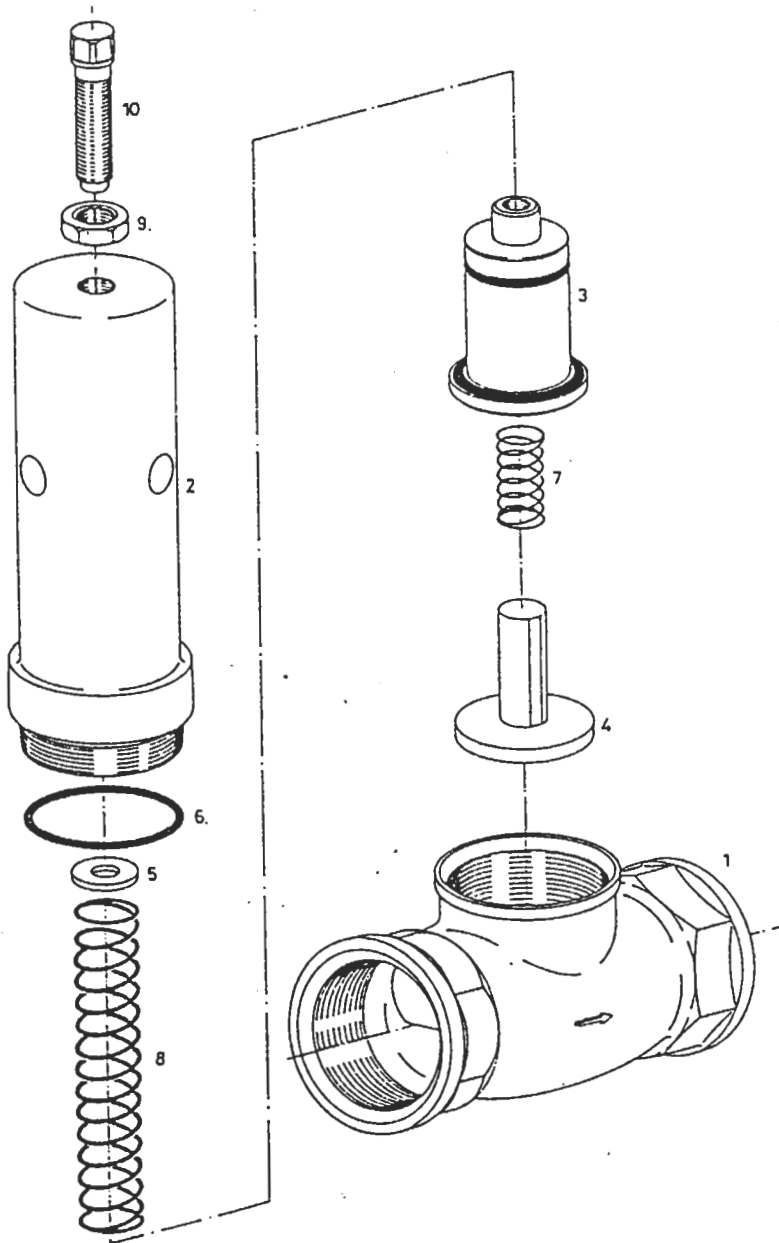
Inlet valve
4.7387.1

KAESER
COMPRESSORS



| Ref. | Qty | Part No. | Description |
|------|-----|----------|-------------------------|
| 1 | 1 | 4.8930.2 | Valve body |
| 2 | 1 | 4.8963.0 | Shaft |
| 3 | 1 | 4.8932.0 | Disk |
| 4 | 1 | 4.8964.0 | Lever |
| 5 | 1 | 4.8961.1 | Support |
| 6 | 1 | 4.8965.0 | Hex. nut |
| 7 | 1 | 7.0486.0 | Working cylinder |
| 8 | 1 | 7.0489.0 | Angle joint |
| 9 | 2 | 6.0033.0 | Ball bearing |
| 10 | 2 | 6.0541.0 | Guard ring dia. 12 x 1 |
| 11 | 1 | 4.7564.0 | Rivet with button head |
| 12 | 1 | 6.0609.0 | Clamping sleeve |
| 13 | 2 | 6.0720.0 | Hex. hd. screw M 6 x 15 |
| 14 | 1 | 6.0723.0 | Hex. hd. screw M 6 x 45 |
| 15 | 1 | 6.0701.0 | Cap nut M 6 |
| 16 | 3 | 6.0622.0 | Washer |

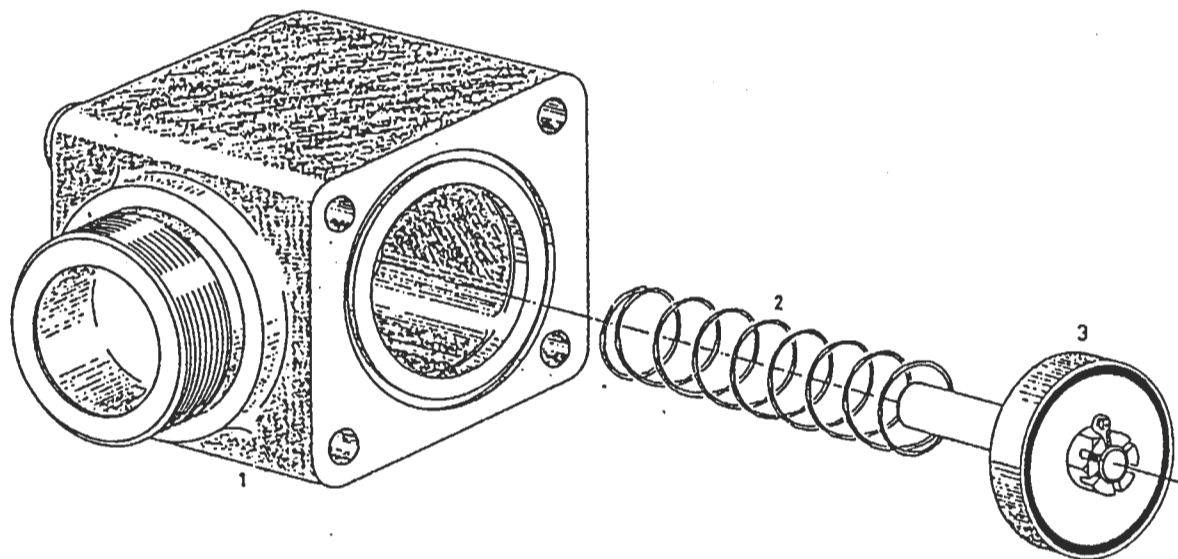
Minimum pressure
check valve
4.7341.0



| Ref. | Qty. | Part No. | Description |
|------|------|----------|----------------------------|
| 1 | 1 | 4.8565.0 | Valve body G 2 |
| 2 | 1 | 4.8566.0 | Cylinder |
| 3 | 1 | 4.9020.0 | Piston complete |
| 4 | 1 | 4.9014.0 | Valve disk complete |
| 5 | 1 | 4.8570.0 | Disk |
| 6 | 1 | 5.1469.0 | O-ring 57 x 2,5 |
| 7 | 1 | 5.0643.0 | Compression spring |
| 8 | 1 | 5.0644.0 | Compression spring |
| 9 | 1 | 6.0686.0 | Hex. nut M 12 |
| 10 | 1 | 6.0945.0 | Square-head bolt M 12 x 40 |

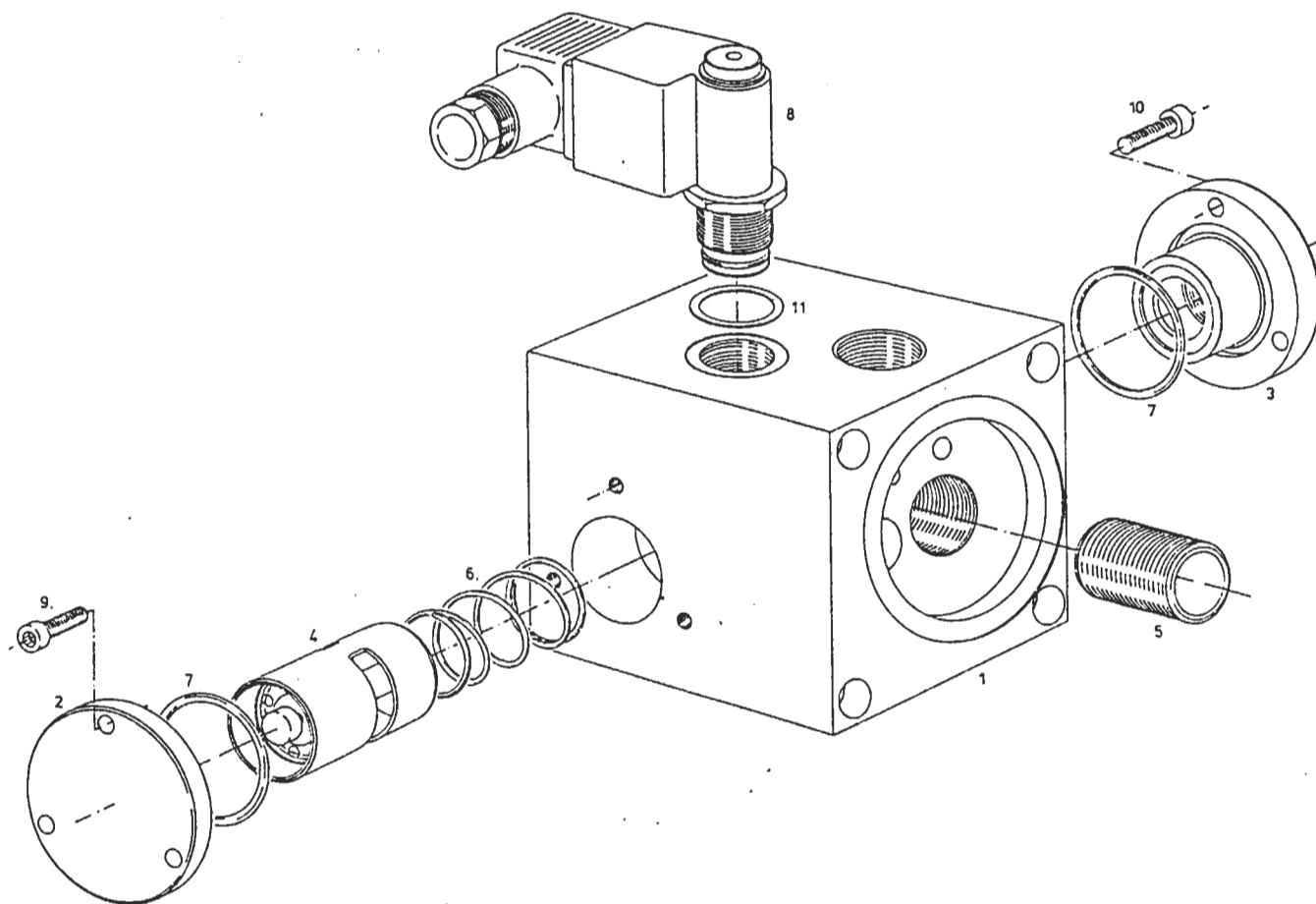
Check valve
4.7393.2

KAESER
KOMPRESSOREN



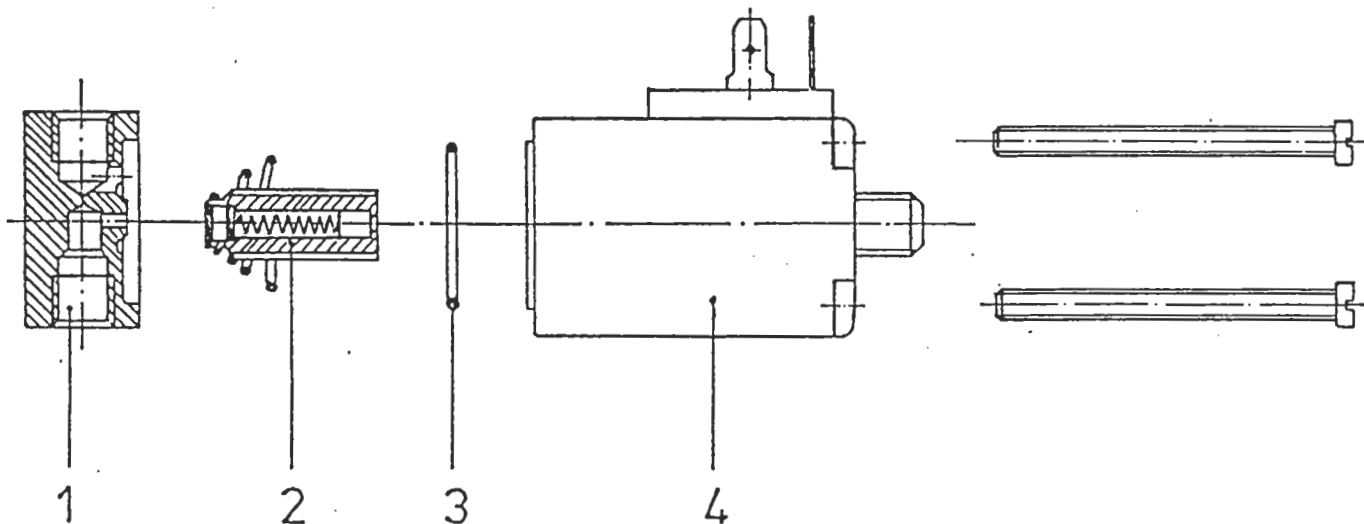
| Ref. | Qty | Part No. | Description |
|------|-----|----------|---------------------|
| 1 | 1 | 4.8910.2 | Valve body |
| 2 | 1 | 5.0617.1 | Compression spring |
| 3 | 1 | 4.9011.1 | Valve disk complete |
| 3 | 1 | 4.8916.1 | Guide bolt |

Combination valve
4.8870.1



| Ref. | Qty | Part No. | Description |
|------|-----|----------|--|
| 1 | 1 | 4.8872.1 | Valve body |
| 2 | 1 | 4.8875.0 | Cover |
| 3 | 1 | 4.8873.0 | Cover |
| 4 | 1 | 7.0399.0 | Actuating piston with working element |
| 5 | 1 | 4.8874.1 | Thread nipple |
| 6 | 1 | 5.0636.0 | Compression spring |
| 7 | 2 | 5.1445.0 | O-ring dia. 35 x 2 |
| 8 | 1 | 7.1407.0 | Difference pressure switch |
| 9 | 3 | 6.2406.0 | Cylinder screw with inside hex. M 5 x 16 |
| 10 | 3 | 6.2400.0 | Cylinder screw with inside hex. M 5 x 20 |
| 11 | 1 | 6.1534.0 | Gasket dia. 25/32" x dia. 15/16" x 1/16" |

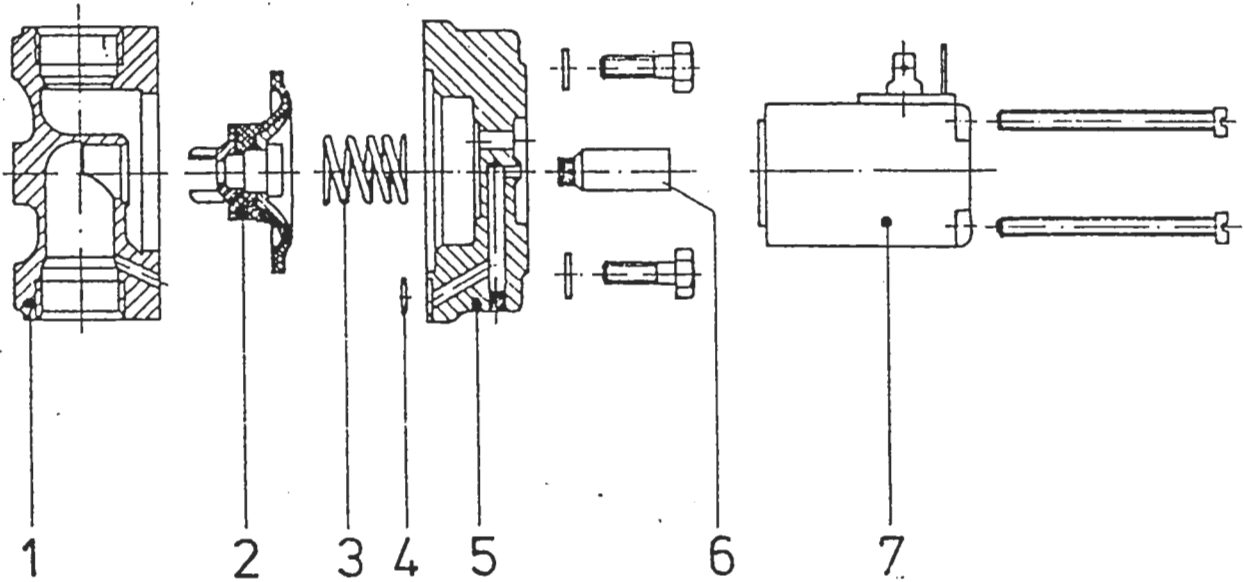
Control valve
2.0712.1



| Ref. | Qty | Part No. | Description |
|------|-----|----------|-----------------------|
| 1 | | | Casing |
| 2 | | 7.0387.0 | Armature |
| 3 | | 7.0344.0 | O-ring 25 x 1,5 Viton |
| 4 | | 7.1372.0 | Coil |

Oil stop valve
2.0704.0

KAESER
COMPRESSORS



| Ref. | Qty. | Part No. | Description |
|------|------|----------|---|
| 1 | | | Bottom of casing compl. pasted with fitting |
| 2 | | 7.0347.0 | Diaphragm complete |
| 3 | | 7.0378.0 | Closing spring |
| 4 | | 7.0345.0 | O-Ring 6 x 1,5 Viton |
| 5 | | | Top of casing |
| 6 | | 7.0343.0 | Core |
| 7 | | 7.1958.0 | Coil complete |

RECOMMENDED SPARE PARTS LIST
Model CS 75/90



Section 1

| DESCRIPTION | Part No. | Qty per unit | LOCATION | | Recommended Quantities | | |
|---|----------|--------------|-------------------------------------|------|------------------------|---|---|
| | | | Section | Ref. | A | B | C |
| Oil filter cartridge | 6.1981.0 | 1 | Oil tubes, Vent lines | 2 | 1 | 2 | 3 |
| Oil separator cartridge complete set consists of: | 6.2013.0 | 1 | | | 1 | 1 | 2 |
| - Oil separator cartridge | 6.1965.0 | 1 | Control tubes, compressed air tubes | 3 | | | |
| - Gasket for tank | 5.0556.0 | 2 | Control tubes, compressed air tubes | 72 | | | |
| - O-Ring dia. 20x2,5 | 5.1443.0 | 1 | Control tubes, compressed air tubes | 62 | | | |
| - Dirt trap strainer | 8.0394.0 | 1 | Control tubes, compressed air tubes | 19a | | | |
| V-belt set CS 75/110 psig | 6.1432.0 | 1 | Driving system | 5 | 1 | 1 | 2 |
| V-belt set CS 75/145 psig | 6.2521.0 | 1 | Driving system | 5 | 1 | 1 | 2 |
| V-belt set CS 75/190 psig | 6.2522.0 | 1 | Driving system | 5 | 1 | 1 | 2 |
| V-belt set CS 90/110 psig | 6.1432.0 | 1 | Driving system | 5 | 1 | 1 | 2 |
| V-belt set CS 90/145 psig | 6.2521.0 | 1 | Driving system | 5 | 1 | 1 | 2 |
| V-belt set CS 90/190 psig | 6.2522.0 | 1 | Driving system | 5 | 1 | 1 | 2 |
| O-Ring dia. 19 x 3 | 5.1423.0 | 2 | Oil tubes, Vent lines | 29 | 1 | 1 | 2 |
| O-Ring dia. 35 x 2 | 5.1445.0 | 2 | Combination valve | 7 | 1 | 1 | 2 |
| O-Ring dia. 47 x 2 | 5.1455.0 | 1 | Control tubes, compressed air tubes | 63 | 1 | 1 | 2 |
| O-Ring dia. 56 x 3 | 5.1422.0 | 1 | Control tubes, compressed air tubes | 64 | 1 | 1 | 2 |
| O-Ring dia. 57 x 2,5 | 5.1469.0 | 1 | Minimum pressure check valve | 6 | 1 | 1 | 2 |
| O-Ring dia. 80 x 2 | 5.1452.0 | 1 | Control tubes, compressed air tubes | 65 | 1 | 1 | 2 |
| Gasket G 1/4 | 6.0470.0 | 2 | Control tubes, compressed air tubes | 66 | 1 | 1 | 2 |
| Gasket G 1/4 | 6.0432.0 | 12 | Control tubes, compressed air tubes | 67 | 1 | 1 | 2 |
| Gasket G 3/8 | 6.1521.0 | 3 | Control tubes, compressed air tubes | 68 | 1 | 1 | 2 |
| Gasket G 1/2 | 6.0438.0 | 2 | Control tubes, compressed air tubes | 69 | 1 | 1 | 2 |
| Gasket G 1/2 | 6.1524.0 | 1 | Control tubes, compressed air tubes | 70 | 1 | 1 | 2 |
| Gasket G 1/2 | 6.1524.0 | 1 | Oil tubes, Vent lines | 32 | 1 | 1 | 2 |
| Gasket G 3/4 | 6.1527.0 | 1 | Control tubes, compressed air tubes | 71 | 1 | 1 | 2 |
| Gasket for inlet valve | 5.0567.1 | 2 | Oil tubes, Vent lines | 31 | 1 | 1 | 2 |
| Gasket ring | 5.1392.0 | 3 | Control tubes, compressed air tubes | 28 | 1 | 1 | 2 |
| Diaphragm | 5.0999.0 | 1 | Vent valve | 4 | 1 | 1 | 2 |
| Diaphragm complete | 7.0347.0 | 1 | Oil stop valve | 2 | 1 | 1 | 2 |

RECOMMENDED SPARE PARTS LIST
Model CS 75/90

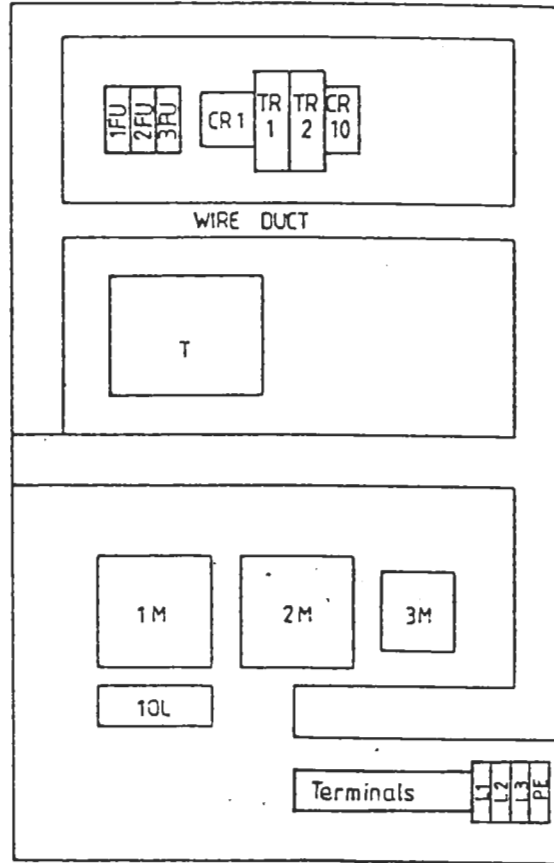


Section 2

| DESCRIPTION | Part No. | Qty per unit | LOCATION | | Recommended Quantities | | |
|------------------------------|----------|--------------|-------------------------------------|------|------------------------|---|---|
| | | | Section | Ref. | A | B | C |
| Piston complete | 4.9026.0 | 1 | Vent valve | 3 | 1 | 1 | 2 |
| Piston complete | 4.9020.0 | 1 | Minimum pressure check valve | 3 | 1 | 1 | 2 |
| Safety pressure switch | 7.0219.0 | 1 | Control tubes, compressed air tubes | 9 | 0 | 1 | 1 |
| Pressure switch 115 psig | 7.0220.0 | 1 | Control tubes, compressed air tubes | 8 | 0 | 1 | 1 |
| Pressure switch 230 psig | 7.0221.0 | 1 | Control tubes, compressed air tubes | 8 | 0 | 1 | 1 |
| Valve disk complete | 4.9014.0 | 1 | Minimum pressure check valve | 4 | 1 | 1 | 2 |
| Valve disk complete | 4.9011.1 | 1 | Check valve | 3 | 1 | 1 | 2 |
| Compression spring | 5.0617.1 | 1 | Check valve | 2 | 0 | 1 | 1 |
| Compression spring | 5.0643.0 | 1 | Minimum pressure check valve | 7 | 0 | 1 | 1 |
| Compression spring | 5.0644.0 | 1 | Minimum pressure check valve | 8 | 0 | 1 | 1 |
| Compression spring | 5.0636.0 | 1 | Combination valve | 6 | 0 | 1 | 1 |
| Working element | 7.0399.0 | 1 | Combination valve | 4 | 1 | 1 | 2 |
| Vent valve | 2.1128.0 | 1 | Oil tubes, vent lines | 5 | 0 | 0 | 1 |
| Inlet valve | 4.7387.1 | 1 | Oil tubes, vent lines | 4 | 0 | 0 | 1 |
| Minimum pressure check valve | 4.7341.0 | 1 | Control tubes, compressed air tubes | 4 | 0 | 0 | 1 |
| Combination valve | 4.8870.1 | 1 | Oil tubes, Vent lines | 1 | 0 | 0 | 1 |
| Control valve | 2.0712.1 | 1 | Control tubes, compressed air tubes | 7 | 0 | 0 | 1 |
| Oil stop valve | 2.0704.0 | 1 | Oil tubes, vent lines | 3 | 0 | 0 | 1 |

**RECOMMENDED SPARE PARTS LIST FOR
ELECTRICAL EQUIPMENT**

Model CS 75
460 V WYE-Delta-start

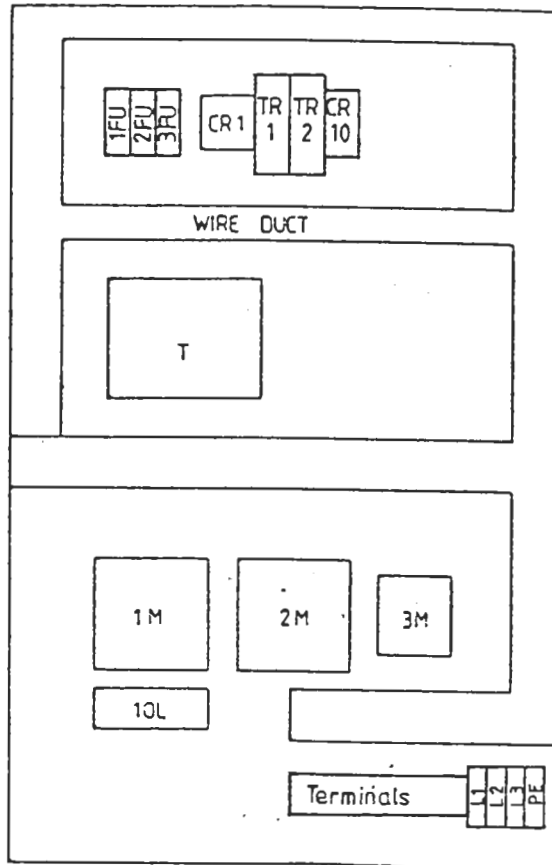


| DESCRIPTION | | Part No. | Qty-per unit | LOCATION USE | Recommended Quantities | | |
|-------------|---------------------------------|----------|--------------|--------------|------------------------|---|---|
| | | | | | A | B | C |
| 1M | Motor starter (main contactor) | 7.3406.0 | 1 | Control box | 0 | 1 | 1 |
| 2M | Motor starter (Delta contactor) | 7.3406.0 | 1 | Control box | 0 | 1 | 1 |
| 3M | Motor starter (WYE contactor) | 7.3404.0 | 1 | Control box | 0 | 1 | 1 |
| 3FU | Fuse | 7.3301.0 | 1 | Control box | 0 | 1 | 1 |
| 1,2FU | Fuse | 7.3311.0 | 2 | Control box | 0 | 1 | 1 |
| T | Transformer | 7.2221.0 | 1 | Control box | 0 | 1 | 1 |
| CR1 | Control relay | 7.2066.0 | 1 | Control box | 0 | 1 | 1 |
| TR1 | Time delay relay | 7.0467.0 | 1 | Control box | 0 | 1 | 1 |
| CR 10 | Thermal overload | 7.2710.1 | 1 | Control box | 0 | 1 | 1 |
| TR2 | Time delay relay (WYE time) | 7.0466.0 | 1 | Control box | 1 | 1 | 2 |
| 10L | Overload relay for motor | 7.3459.0 | 1 | Control box | 0 | 1 | 1 |

**RECOMMENDED SPARE PARTS LIST FOR
ELECTRICAL EQUIPMENT**

Model CS 90

460 V WYE-Delta start



| DESCRIPTION | | Part No. | Qty-per unit | LOCATION USE | Recommended Quantities | | |
|-------------|---------------------------------|----------|--------------|--------------|------------------------|---|---|
| | | | | | A | B | C |
| 1M | Motor starter (main contactor) | 7.3407.0 | 1 | Control box | 0 | 1 | 1 |
| 2M | Motor starter (Delta contactor) | 7.3407.0 | 1 | Control box | 0 | 1 | 1 |
| 3M | Motor starter (WYE contactor) | 7.3405.0 | 1 | Control box | 0 | 1 | 1 |
| 3FU | Fuse | 7.3301.0 | 1 | Control box | 0 | 1 | 1 |
| 1,2FU | Fuse | 7.3311.0 | 2 | Control box | 0 | 1 | 1 |
| T | Transformer | 7.2221.0 | 1 | Control box | 0 | 1 | 1 |
| CR1 | Control relay | 7.2066.0 | 1 | Control box | 0 | 1 | 1 |
| TR1 | Time delay relay | 7.0467.0 | 1 | Control box | 0 | 1 | 1 |
| CR 10 | Thermal overload | 7.2710.1 | 1 | Control box | 0 | 1 | 1 |
| TR2 | Time delay relay (WYE time) | 7.0466.0 | 1 | Control box | 1 | 1 | 2 |
| 10L | Overload relay for motor | 7.3460.0 | 1 | Control box | 0 | 1 | 1 |