



# Atlas Copco Stationary Air Compressors

GA90 - GA110 - GA132 - GA160

GA90 W - GA110 W - GA132 W - GA160 W

## Parts list

From following serial No. onwards: AIF-056 813



- Copyright 2003, Atlas Copco Airpower n.v., Antwerp, Belgium.  
Any unauthorized use or copying of the contents or any part thereof is prohibited. This applies in particular to trademarks, model denominations, part numbers and drawings.
- **Use only authorized parts.** Any damage or malfunction caused by the use of unauthorized parts is not covered by Warranty or Product Liability.

No. 2930 1283 03  
(Replaces No. 2930 1283 02)

Registration code: APC G  $\geq$  90/'99 / 39 / 992

2003-01

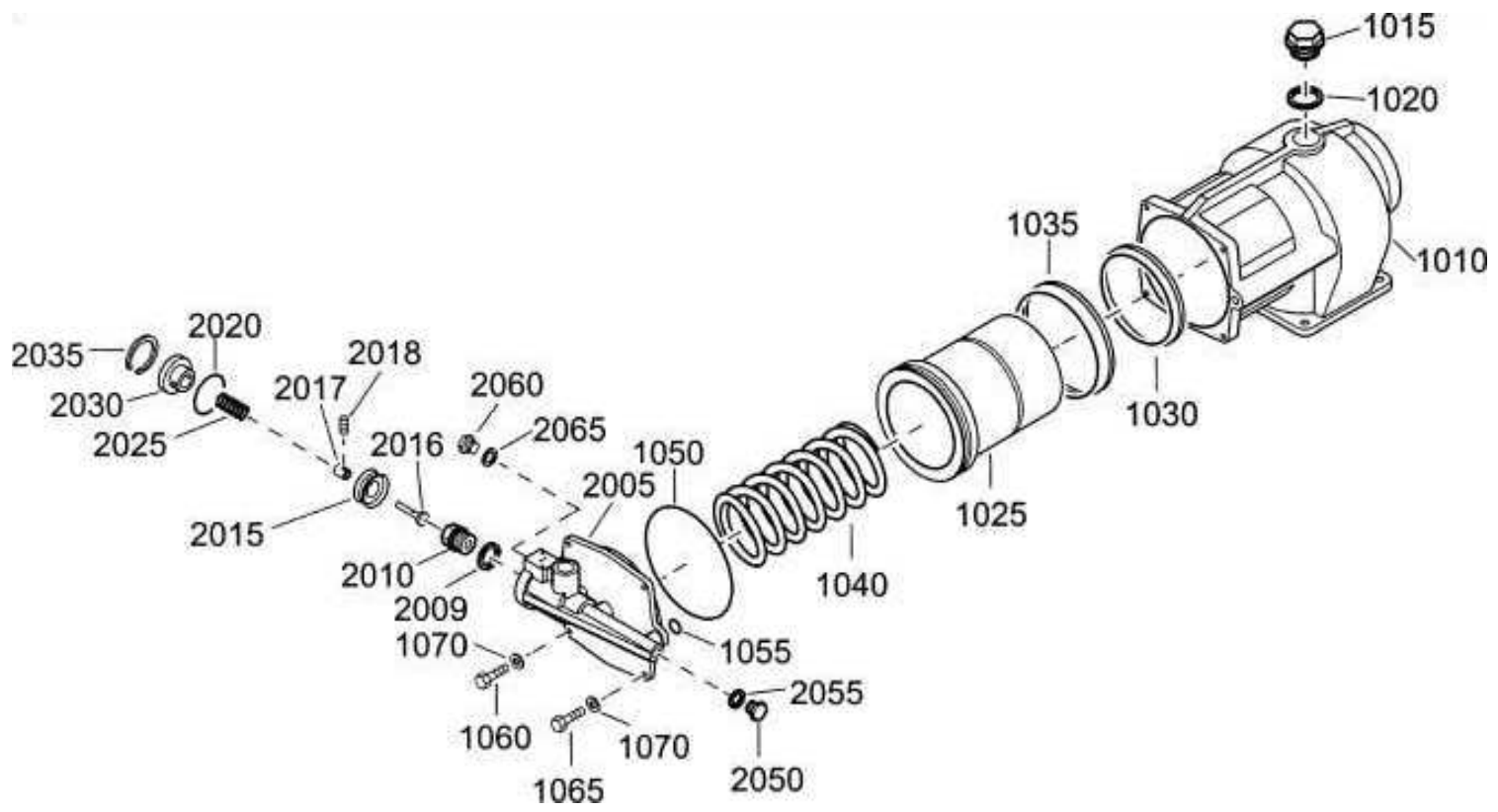
[www.atlascopco.com](http://www.atlascopco.com)



	Indice Innholdsfortegnelse Indice Indholdsfortegnelse Sisällysluettelo
Contents	
Inhoud	
Innehåll	
Inhaltsverzeichnis	
Table des matières	
Indice	
<hr/>	
Unloading valve	7
Ontlastventiel	8
Avlastningsventil	
Entlastungsventil	
Soupape de décharge	
Válvula de descarga	
Valvola di messa a vuoto	
Aflastningsventil	
Válvula de descarga	
Avlastningsventil	
Kevennysventtiili.....	1
Drive arrangement	
Aandrijfuitvoering	
Drivarrangemang	
Antriebsanordnung	
Dispositif d'entraînement	
Disposición de accionamiento	
Disposizione di azionamento	
Arrangement	
Disposição de accionamento	
Drivarrangement	
Rakenne .....	2
Air inlet	
Luchtinlaat	
Luftintag	
Lufteinlaß	
Admission d'air	
Entrada de aire	
Presa d'aria	
Luftindsug	
Admissão de ar	
Luftinnløp	
Tuloilma	
- GA .....	3
- GA W .....	4
- Standard option - Heavy duty filter .....	5
Air receiver	
Luchtketel	
Luftbehållare	
Luftbehälter	
Réservoir d'air	
Depósito de aire	
Serbatoio dell'aria	
Luftbeholder	
Reservatório de ar	
Luftbeholder	
Ilmasäiliö .....	6
Air and oil system	
Lucht- en oliesysteem	
Luft- och oljesystem	
Luft- und Ölsystem	
Système d'air et d'huile	
Sistema de aire y aceite	
Sistema di aria e olio	
Luft- og oliesystem	
Circuitos de ar e óleo	
- GA .....	7
- GA W .....	8
Air outlet	
Luchtuitlaat	
Luftutlopp	
Luftauslaß	
Sortie d'air	
Salida de aire	
Mandata dell'aria	
Luftafgang	
Saida de ar	
Luftutløp	
Paineilmaputki	
- Pack .....	9
- Full-feature .....	10
- Full-feature + DD filter .....	11
Cooler(s)	
Koeler(s)	
Kylare	
Kühler	
Refroidisseur(s)	
Refrigerador(es)	
Refrigeratore(i)	
Kølere	
Refrigerador(es)	
Kjøler(e)	
Jäähdyttimet	
- GA .....	12
- GA W .....	13
Frame and coupling	
Frame en koppeling	
Ram och koppling	
Rahmen und Kupplung	
Châssis et accouplement	
Bastidor y acoplamiento	
Telaio e giunto	
Ramme og kobling	
Base e acoplamento	
Ramme og kopling	
Runko ja kytkin .....	14
Fan and cooling duct plates - GA	
Ventilator en koelluchtgeleideplaten	
Fläkt och kylkanalplåtar	
Ventilator und Kühlluftleitbleche	
Ventilateur et conduits de refroidissement	
Ventilador y paneles de conducción de refrigeración	
Ventilatore e intubatura	
Ventilator og køleledeplader	
Ventilador e paineis das condutas de refrigeração	
Vifte og kjølekanalplater	
Puhallin ja jäähdytyskanavalevyt .....	15
Regulating system	
Regelsysteem	

Sistema de regulación Sistema di regolazione Reguleringssystem Sistema de regulação Reguleringssystem Säätöjärjestelmä - 1) ..... - 2) .....	16 17	- GA132-160 W .....	28
Drain system Aftapsysteem Avtappningssystem Abläßsystem Système de vidange Sistema de drenaje Sistema di scarico Drænsystem Sistema de drenagem de condensados Avtappingssystem Lauhteenpoistojärjestelmä - Basic- and DD-filter drain ..... - Electronic Drain System ..... - Oil Separator Condensate Drain.....	18 19 20	Energy recovery system - Optional Energiereduceratiesysteem Energiaättervinningsystem Energierückgewinnungssystem Système de récupération d'énergie Sistema de recuperación de energía Sistema di recupero energia Energigenvinding Sistema de recuperação de energia Energigjenvinningsystem Energian talteenottojärjestelmä .....	29
Bodywork Carrosserie Karosseri Karosserie Capotage Carrocería Cappottatura Karosseri Carroceria Kabinett Kotelo - GA ..... - GA W .....	21 22	Start cubicle - star/delta Startkast - ster/driehoek Startskåp - stjärn/triangel Anlaßschrank - Stern/Dreieck Armoire de démarrage - étoile/triangle Cubículo de arranque - estrella/triángulo Armadio apparecch. di avviamento - stella/triangolo Starterskab - stjerne/trekant Cubículo-arranque estrela/triângulo Startskap - stjerne-trekant Käynnistinkotelo - Y/D - Control Voltage 230/24V-Full options 1) ..... - Control Voltage 230/24V-Full options 2) ..... - Control Voltage 115/24V-CSA/UL-Full options 1) . - Control Voltage 115/24V-CSA/UL-Full options 2) . - Control Voltage 230/24V-COM 1option only 1) ..... - Control Voltage 230/24V-Basic parts 2)..... - Control Voltage 115/24V-CSA/UL-COM 1 option only 1).....	30 31 32 33 34 35 36
Cubicle Kast Skåp Schaltschrank Armoire Armario Armadio elettrico Elskab Quadro Skap Kotelo - 1) ..... - 2) .....	23 24	Start cubicle - without starter - Control Voltage 230/24V-Full options 1) ..... - Control Voltage 230/24V-Full options 2) ..... - Control Voltage 115/24V-CSA/UL-Full options 1) . - Control Voltage 115/24V-CSA/UL-Full options 2) .	37 38 39 40
Air dryer Luchtdroger Lufttorkare Lufttrockner Sécheur d'air Secador de aire Essiccatore d'aria Lufttørrer Secador de ar Lufttørker Kuivain - GA90-110 ..... - GA90-110 W .....	25 26	Service kits Service kits Service kits Service Kits Service kits Service kits Kit per la manutenzione Service kits Conjuntos de reparação Servicesett Huoltotarvikesarjat .....	41
		1) Up to serial No. : Tot serienummer: T.o.m. tillverkningsnummer: Bis Seriennummer: Jusqu'au numéro de série: Hasta el número de serie: Fino al numeri di serie: Gælder til følgende serienumre: Até o número de série: Til følgende serienumre: .....	2) From following serial No. onwards: Geldig vanaf volgend serienummer: Fr.o.m. tillverkningsnummer: Gültig ab Seriennummer: Valable à partir du numéro de série suivant: A partir del siguiente número de serie: Dai seguenti numeri di serie in avanti: Gælder fra følgende serienumre: A partir do número de série:

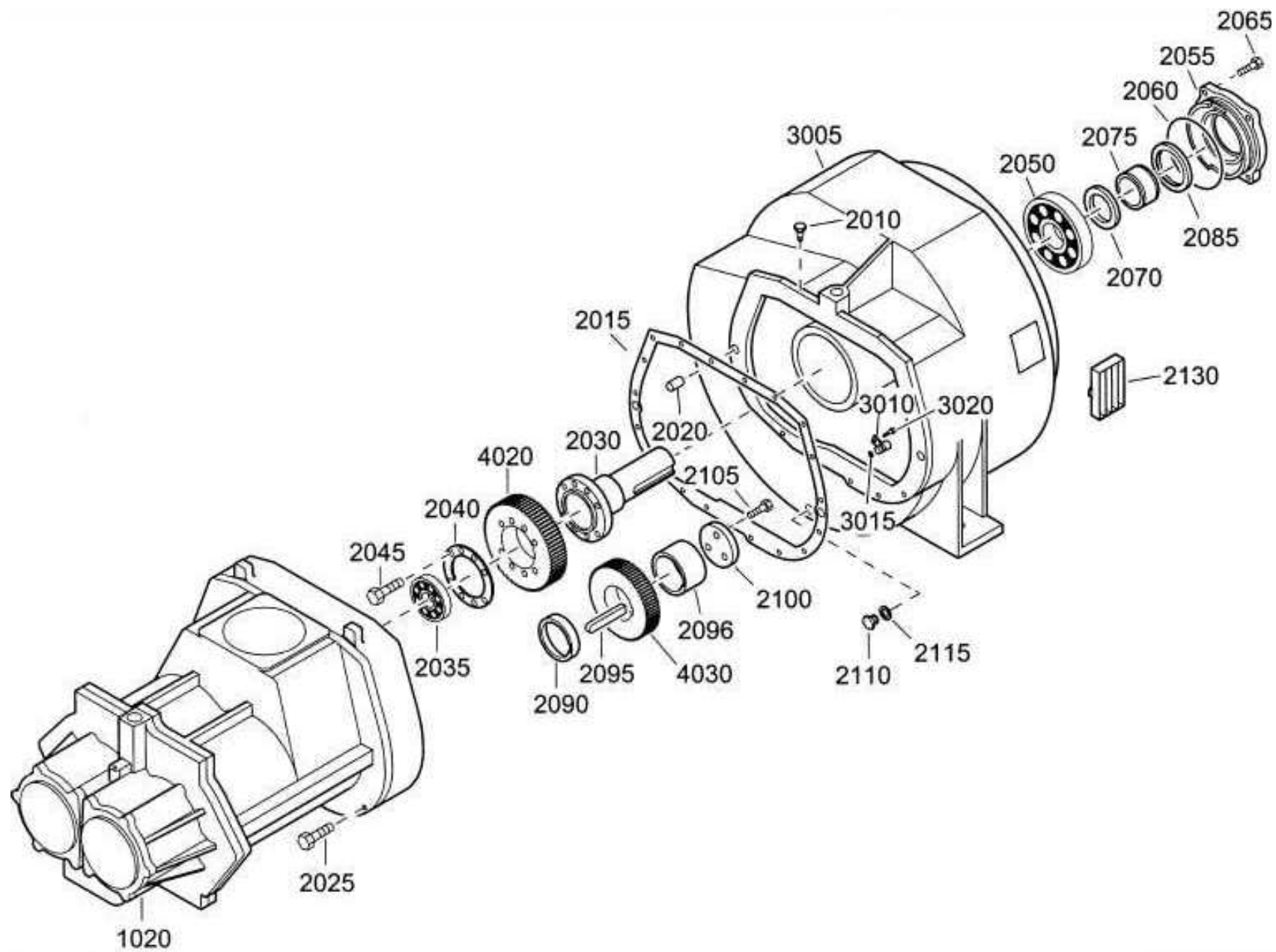
1



## Unloading valve

Ref.	Part number	Qty	Name	Remarks	Ref.	Part number	Qty	Name	Remarks
	<b>1614 9008 80</b>	<b>1</b>	<b>Unloader assembly</b>		2009	0661 1000 36 ●●	1	Seal washer	
1010	1614 9008 00 ●	1	Valve housing		2010	1614 9154 00 ●●	1	Valve seat	
1015	2250 2528 00 ●	1	Plug screw		2015	1621 9133 00 ●●	1	Piston	
1020	0661 1000 31 ●	1	Seal washer		2016	1621 9146 00 ●●	1	Pin	
1025	1614 9173 00 ●	1	Valve		2017	1621 9145 00 ●●	1	Bushing	
1030	1619 6142 00 ●	1	Sealring		2018	0196 1552 98 ●●	1	Set screw	
1035	1619 6143 00 ●	1	Sealring		2020	0663 9868 00 ●●	1	O-ring	
1040	1614 9282 00 ●	1	Spring		2025	1614 9156 00 ●●	1	Spring	
1050	0663 2109 71 ●	1	O-ring		2030	1621 9136 00 ●●	1	Cover	
1055	0663 2109 73 ●	2	O-ring		2035	0335 2150 00 ●●	1	Circlips	
1060	0147 1326 03 ●	2	Bolt		2050	0686 3716 38 ●●	1	Plug	
1065	0147 1958 97 ●	2	Bolt		2055	0653 9078 00 ●●	1	Flat gasket	
1070	0201 0225 00 ●	4	Washer		2060	0686 4201 03 ●●	1	Pin	

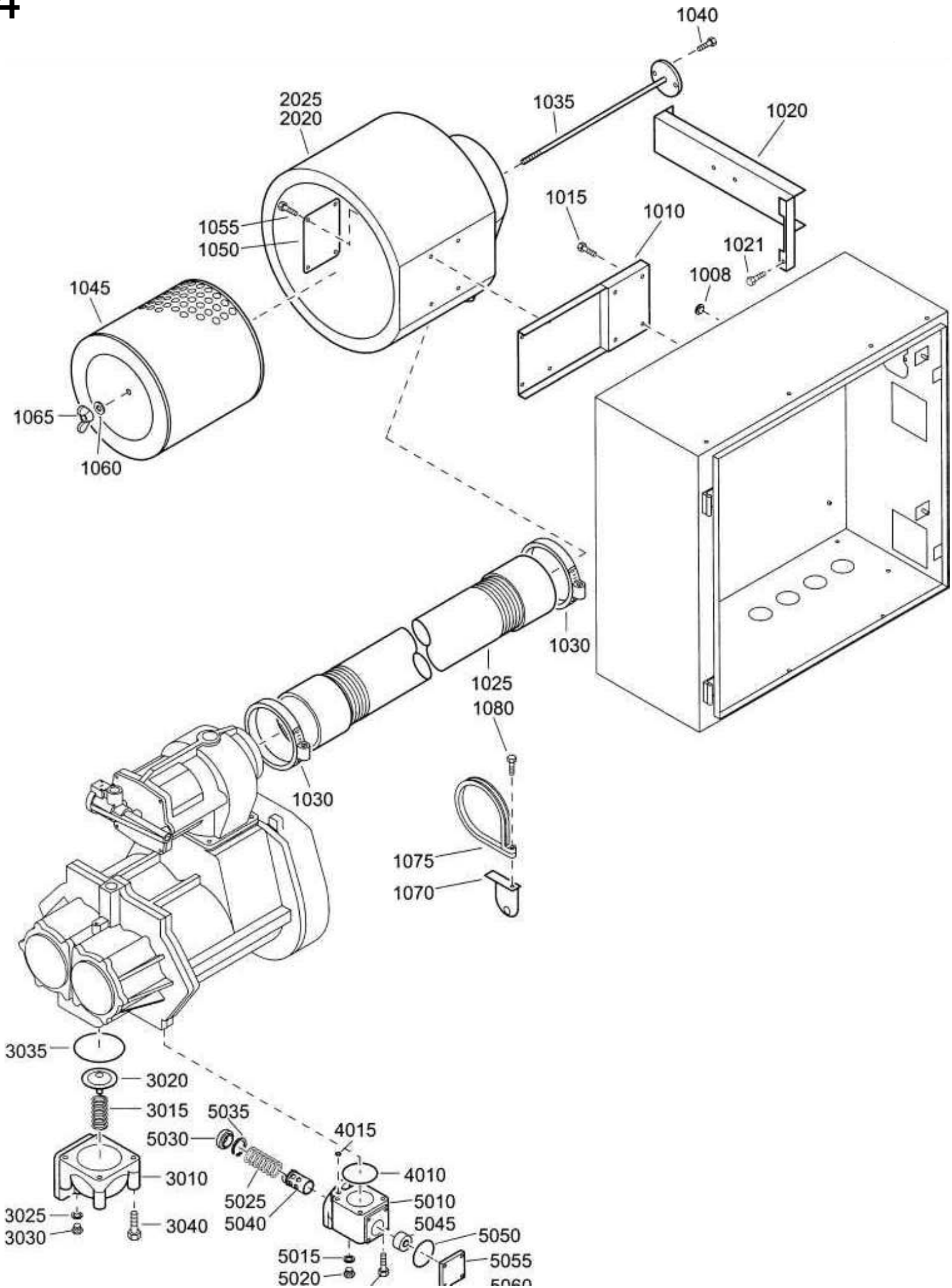
# 2



## Drive arrangement

Ref.	Part number	Qty	Name	Remarks	Ref.	Part number	Qty	Name	Remarks
1020	2989 0122 00	1	Service stage						
2010	1619 6032 00	1	Nipple	1)		1614 9330 00		GA160 (W)-7.5bar	
2015	1202 7003 00	1	Gasket			1614 9332 00		GA160 (W)-8.5bar	
2020	0101 1626 00	2	Pin			1614 9334 00		GA160 (W)-10bar	
2025	0147 1380 03	18	Bolt			1614 9336 00		GA160 (W)-13bar	
2030	1616 5735 00	1	Drive shaft			1614 9338 00		GA160 (W)-100psi	
2035	0508 2158 01	1	Roller bearing			1614 9340 00		GA160 (W)-150psi	
2040	2252 5476 00	1	Locking plate			1614 9342 00		GA160 (W)-125psi	
2045	0211 1409 00	8	Cap screw			1614 9344 00		GA110 (W)-13bar	
2050	0506 0100 08	1	Roller bearing		4030	1614 9346 00	1	GA90 (W)-100psi	
2055	2252 5479 00	1	Retainer			1614 9301 00		Gear wheel	
2060	0663 2107 76	1	O-ring					GA90 (W)-7.5bar, GA160 (W)-200psi	
2065	0147 1366 03	4	Bolt			1614 9303 00		GA90 (W)-8,5bar, GA110 (W)-125psi	
2070	2252 5477 00	1	Washer					GA90 (W)-10bar	
2075	2252 5478 00	1	Bushing			1614 9305 00		GA90 (W)-13bar, GA90 (W)-150psi	
2085	1614 9429 00	1	Seal			1614 9307 00		GA110 (W)-7.5bar	
2090	2254 8832 00	1	Bushing			1614 9309 00		GA110 (W)-8.5bar	
2095	0337 6074 00	1	Parallel key			1614 9311 00		GA110 (W)-10bar	
2096	1614 9159 00	1	Bushing			1614 9313 00		GA110 (W)-150psi	
2100	2252 5470 00	1	Washer			1614 9315 00		GA90 (W)-125psi	
2105	0211 1409 00	3	Cap screw			1614 9317 00		GA90 (W)-200psi	
2110	0686 3716 02	1	Plug			1614 9319 00		GA110 (W)-200psi	
2115	0661 1000 27	1	Seal washer			1614 9321 00		GA132 (W)-7.5bar	
2130		2	Grating			1614 9323 00		GA132 (W)-10bar	
	1614 6611 00		2)4)6)7)			1614 9327 00		GA132 (W)-13bar, GA110 (W)-100psi	
	1614 9372 00		3)			1614 9329 00		GA160 (W)-7.5bar	
	1614 9371 00		5)			1614 9331 00		GA160 (W)-8.5bar	
		1	Gear casing assy			1614 9333 00		GA160 (W)-10bar	
	1614 9004 80		2)			1614 9335 00		GA160 (W)-13bar	
	1614 9350 80		3)			1614 9337 00		GA160 (W)-100psi	
	1614 9102 80		4)			1614 9339 00		GA160 (W)-150psi	
	1614 9400 80		5)			1614 9341 00		GA160 (W)-125psi	
	1614 9005 80		6)			1614 9343 00		GA110 (W)-13bar	
	1614 9103 80		7)			1614 9345 00		GA90 (W)-100psi	
3005		• 1	Gear casing			1614 9347 00			
	1614 9004 00		2)					1) Vibration monitoring "Shock Pulse Measurement" / Trillingskontrolle "SPM" / Vibrationskontroll "Stötpuls-mätning" / Schwingungsüberwachung "SPM" / Surveillance des vibrations "SPM" / Monitorización de vibraciones "SPM" / Controllo di vibrazione "SPM" / Vibrationsovervågning "SPM" / Controllo de vibrações SPM / Vibrasjonsovervåking "SPM" / SPM-tärinänvalvonta	
	1614 9350 00		3)					2) GA90 (W) 7.5-8.5-10bar/50Hz ABB motor, GA90 (W) 125psi/60Hz ABB motor, GA110 (W) 10-13bar/50Hz ABB motor, GA90(W)-GA110(W)-GA132(W)-GA160(W) Without motor IEC FF 500	
	1614 9102 00		4)					3) GA90 (W) 13bar/50Hz ABB motor, GA90 (W) 100-150-200psi/60Hz ABB motor, GA110 (W) 7.5-8.5bar/50Hz ABB motor	
	1614 9400 00		5)					4) GA110 (W) 150-200psi/60Hz ABB motor, GA132 (W) 13bar/50Hz ABB motor, GA160 (W) 7.5-8.5bar/50Hz ABB motor, GA160 (W) 100-125-150psi/60Hz ABB motor, GA90(W)-GA110(W)-GA132(W)-GA160(W) Without motor IEC FF 600	
	1614 9005 00		6)					5) GA110 (W) 100-125psi/60Hz ABB motor GA132 (W) 7.5-8.5-10bar/50Hz ABB motor GA160 (W) 10-13bar/50Hz ABB motor	
	1614 9103 00		7)					6) GA160 (W) 200psi/60Hz ABB motor GA90 (W)-GA110 (W) 60Hz Siemens motor, GA90(W)-GA110(W)-GA132(W)-GA160(W)	
3010	1614 9098 00	• 1	Nozzle						
3015	0663 2104 63	• 1	O-ring						
3020	0147 1244 03	• 1	Bolt						
4020		1	Gear wheel						
	1614 9300 00		GA90 (W)-7.5bar, GA160 (W)-200psi						
	1614 9302 00		GA90 (W)-8,5bar, GA110 (W)-125psi						
	1614 9304 00		GA90 (W)-10bar						
	1614 9306 00		GA90 (W)-13bar, GA90 (W)-150psi						
	1614 9308 00		GA110 (W)-7.5bar						
	1614 9310 00		GA110 (W)-8.5bar						
	1614 9312 00		GA110 (W)-10bar						
	1614 9314 00		GA110 (W)-150psi						
	1614 9316 00		GA90 (W)-125psi						
	1614 9318 00		GA90 (W)-200psi						
	1614 9320 00		GA110 (W)-200psi						
	1614 9322 00		GA132 (W)-7.5bar						
	1614 9326 00		GA132 (W)-10bar						

# 4

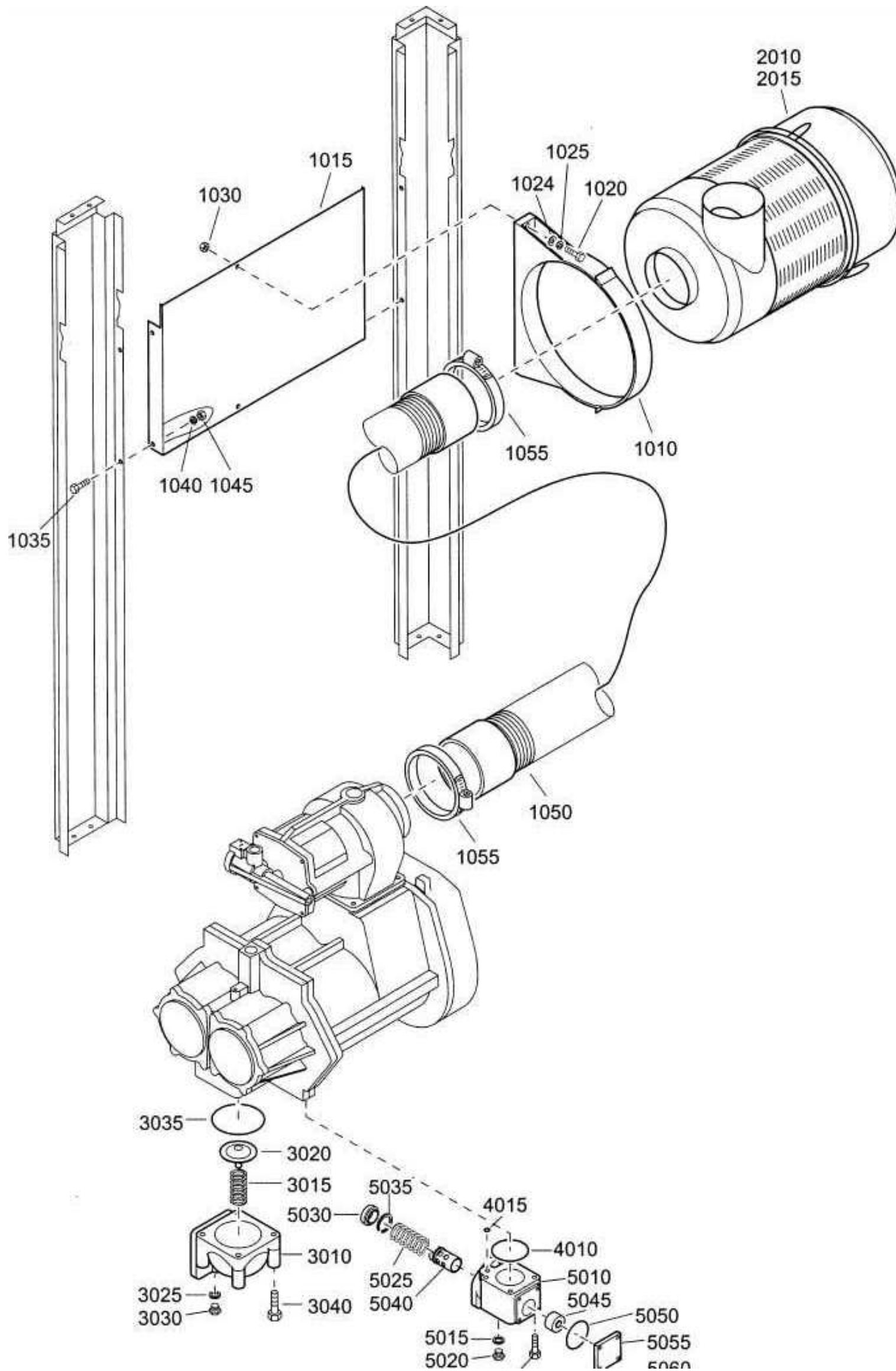




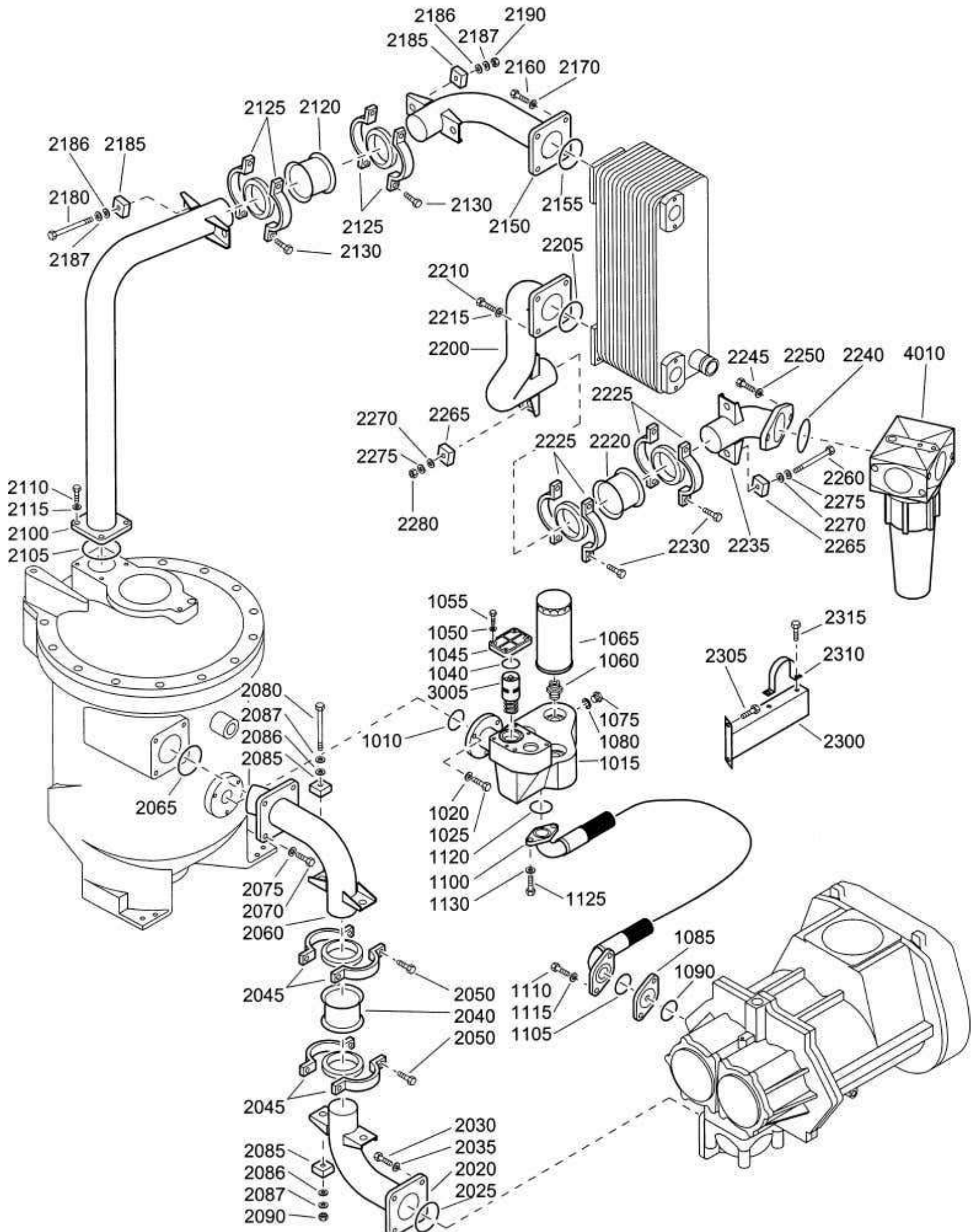
**Air inlet - GA W**

Ref.	Part number	Qty	Name	Remarks	Ref.	Part number	Qty	Name	Remarks
1008	1616 2987 00	8	Plug			<b>1614 9202 80</b>	<b>1</b>	<b>Air filter assembly</b>	
1010		1	Support		2020	1614 9202 00	• 1	Filter housing	
	1614 9370 00		GA132 W,GA160 W		2025	1614 9132 00	• 1	Silencing foam	
	1614 9763 00		GA90 W,GA110 W		3010	1614 6425 00	1	Housing	
1015			Bolt		3015	2254 8075 00	1	Compr.spring	
	1619 2766 00	4	GA132 W,GA 160 W		3020	2254 5324 00	1	Check valve	
	1619 2766 00	5	GA90 W,GA 110 W		3025	0661 1000 25	2	Seal washer	
1020		1	Support		3030	0686 3716 01	2	Plug	
	1614 9770 00		GA90 W,GA110 W		3035	0663 2106 20	1	O-ring	
1021		1	Bolt		3040	0147 1417 03	4	Bolt	
	1619 2766 00		GA90 W,GA110 W		4010	0663 2106 15	1	O-ring	
1025		1	Hose assembly		4015	0663 2108 12	1	O-ring	
	1614 9091 00		GA132 W,GA160 W		4020	0147 1379 03	4	Bolt	
	1614 9376 00		GA90 W,GA110 W			<b>1614 9185 80</b>	<b>1</b>	<b>Oil stop valve</b>	
1030	0347 6121 00	2	Hose clip		5010	1614 9185 00	• 1	Valve housing	
1035	1614 8004 01	1	Rod		5015	0661 1000 25	• 1	Seal washer	
1040	0147 1323 03	2	Bolt		5020	0686 3716 01	• 1	Plug	
1045	1030 0979 00	1	Air filter		5025	2254 9868 00	• 1	Compr.spring	
1050	1614 9088 00	1	Plate		5030	2252 6269 00	• 1	Spring guide	
1055	0147 1325 03	4	Bolt		5035	0335 2145 00	• 1	Int.circlip	
1060	0301 2358 00	1	Washer		5040	2255 2751 00	• 1	Valve	
1065	0296 1112 02	1	Wing nut		5045	2255 2813 00	• 1	Piston	
1070	1614 9772 00	1	Support		5050	0663 2106 12	• 1	O-ring	

# 5



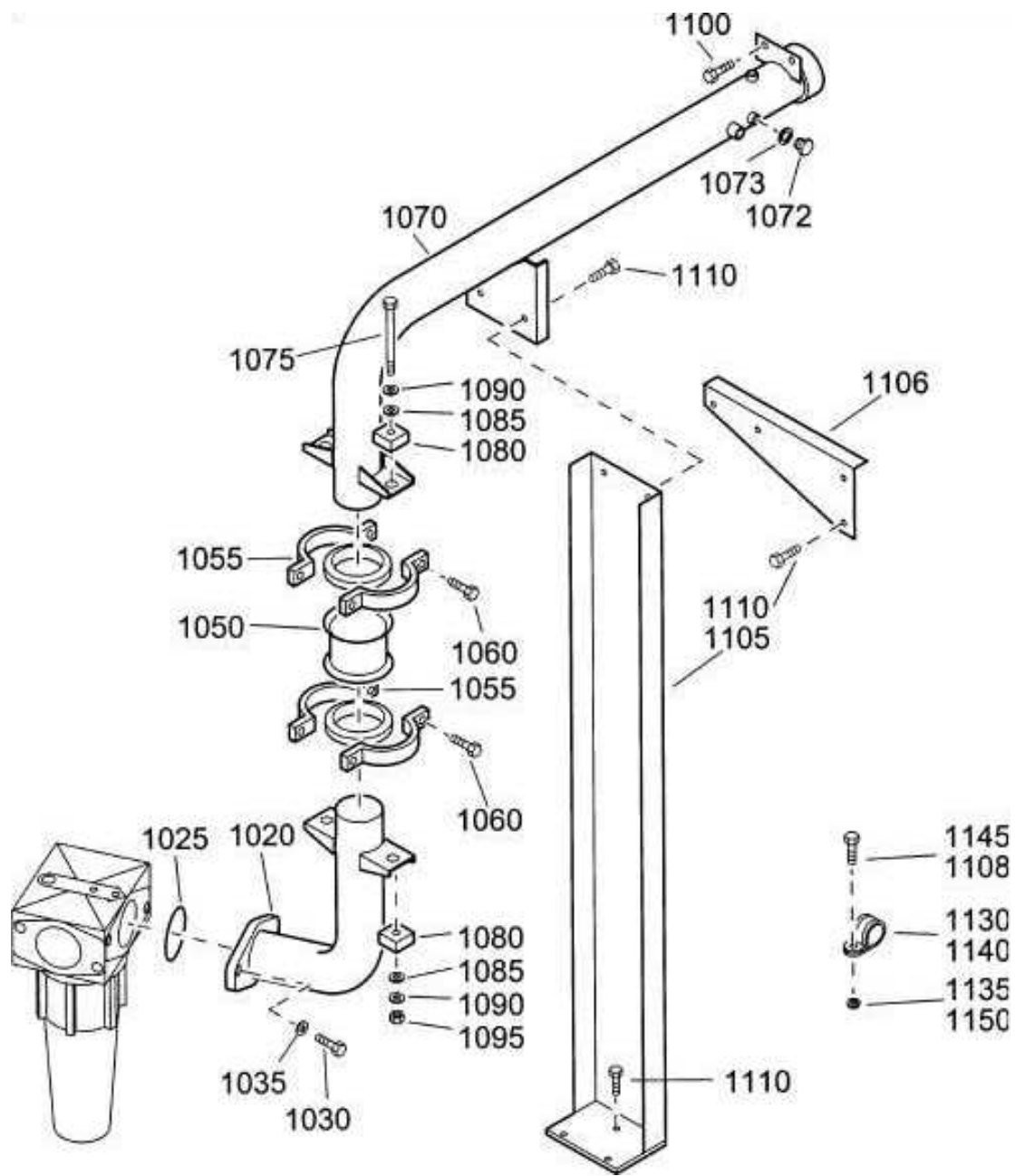
# 8



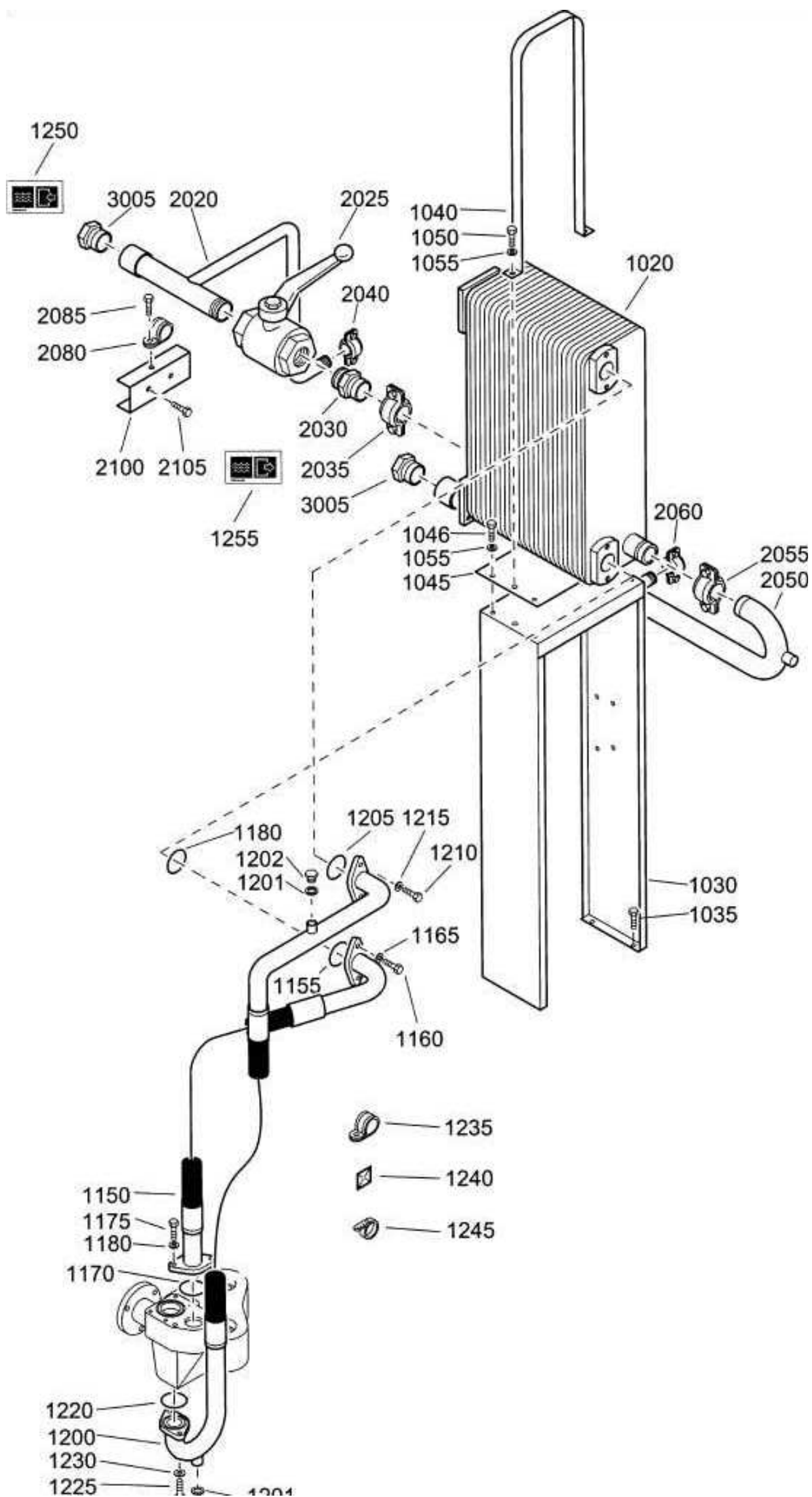
**Air and oil system - GA W**

<b>Ref.</b>	<b>Part number</b>	<b>Qty</b>	<b>Name</b>	<b>Remarks</b>
2305			Bolt	
	1619 2766 00	4	GA90 W, GA110 W	
	1619 2766 00	2	GA132 W, GA160 W	
2310		1	Support	
	1614 9625 00		GA90 W, GA110 W	
	1614 9299 00		GA132 W, GA160 W	
2315	1619 2766 00	2	Bolt	
3005		1	Thermost.valve	
	1202 5869 03		13bar(e), 200psi	
	1619 7560 00		7.5bar(e), 8.5bar(e), 10bar(e) 100psi, 125psi, 150psi	
<b>4010</b>		<b>1</b>	<b>Waterseparator</b>	
	1614 9373 00		GA90 W, GA110 W Electronic Condensate Drain	
	1614 9374 00		GA132 W, GA160 W Electronic Condensate Drain	
	<b>1619 7474 01</b>		GA90 W, GA110 W	
	0663 6136 00 •	1	O-ring	
	0663 6147 00 •	1	O-ring	
	1613 6728 00		GA132 W, GA160 W	

# 9



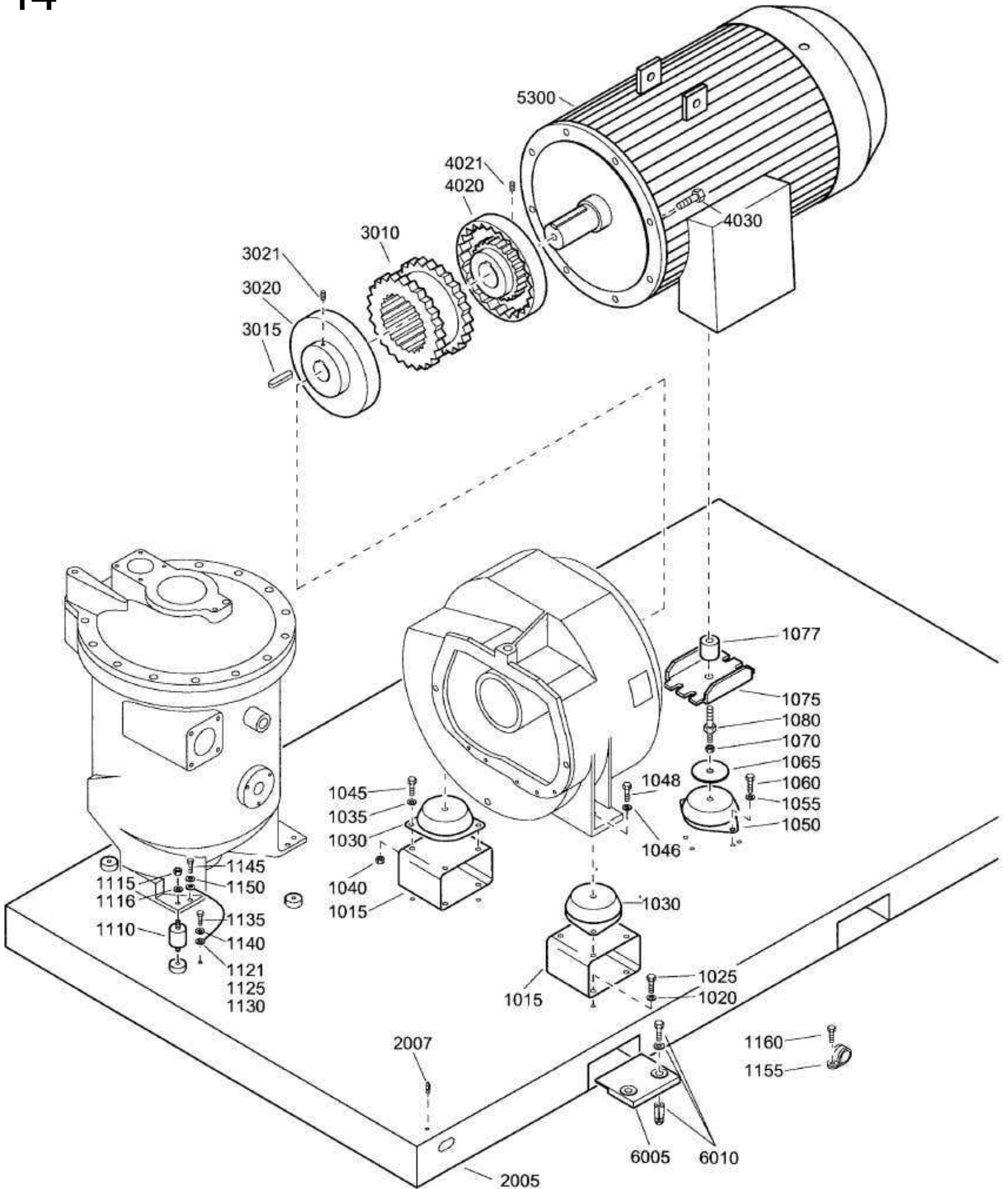
# 13



## Coolers - GA W

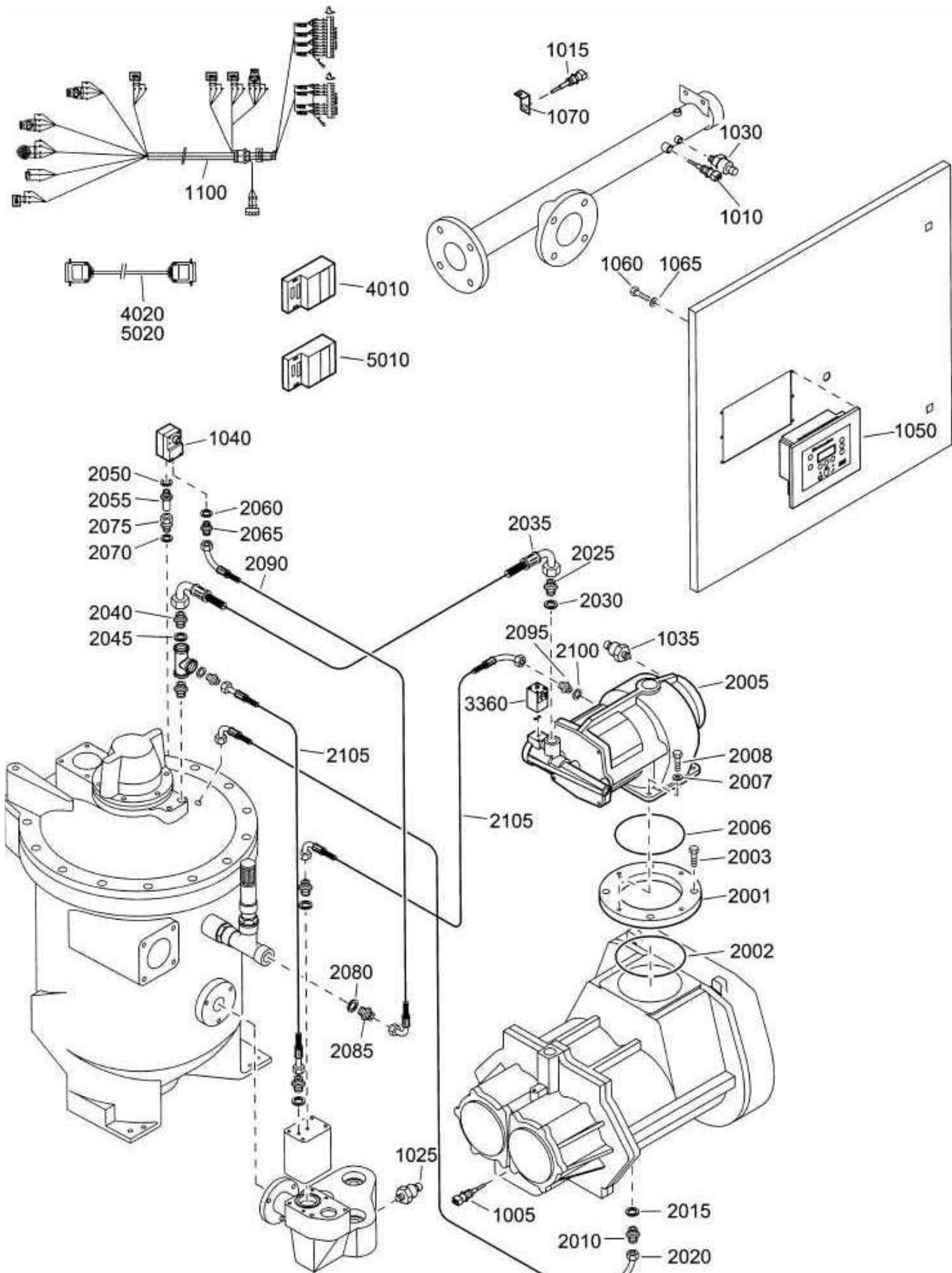
Ref.	Part number	Qty	Name	Remarks	Ref.	Part number	Qty	Name	Remarks
1020		1	Cooler		1225		2	Bolt	
	1614 9580 00		GA90 W, GA110 W			0147 1362 03		GA90 W, GA110 W,	
	1614 9584 00		GA132 W, GA160 W					GA132 W, GA160 W	
1030	1614 9578 00	1	Support			0147 1363 03		GA90 W Energy recovery,	
1035	1619 2766 00	4	Bolt					GA110 W Energy recovery,	
1040	1614 9567 00	1	Support					GA132 W Energy recovery,	
1045		1	Plate					GA160 W Energy recovery	
	1614 9581 00		GA90 W, GA110 W		1230	0301 2344 00	2	Washer	
	1614 9585 00		GA132 W, GA160 W		1235	0346 1000 15	2	Pipe clamp	
1046	0147 1323 03	4	Bolt		1240	1088 1305 02	5	Push mount	
1050	0147 1325 03	2	Bolt		1245	1088 1301 03	7	Cable strip	
1055	0301 2335 00	6	Washer		1250		1	Inform.label	
1150		1	Hose assembly			1079 9913 79		GA90 W Energy recovery,	
	1614 8960 00		GA90 W, GA110 W					GA110 W Energy recovery,	
	1614 8962 00		GA132 W, GA160 W					GA132 W Energy recovery,	
1155	0663 2109 68	1	O-ring					GA160 W Energy recovery	
1160		2	Bolt		1255		1	Inform.label	
	0147 1362 03		GA90 W, GA110 W,			1079 9913 69		GA90 W Energy recovery,	
			GA132 W, GA160 W					GA110 W Energy recovery,	
	0147 1372 03		GA90 W Energy recovery,					GA132 W Energy recovery,	
			GA110 W Energy recovery,		2020		1	Pipe	
			GA132 W Energy recovery,			1614 9272 00		Without air dryer	
			GA160 W Energy recovery			1614 9273 00		GA90 W With air dryer,	
1165	0301 2344 00	2	Washer					GA110 W With air dryer	
1170	0663 2109 68	1	O-ring					GA132 W With air dryer,	
1175		2	Bolt			1614 9932 00		GA160 W With air dryer	
	0147 1362 03		GA90 W, GA110 W,		2025	1619 6153 08	1	Ball valve	
			GA132 W, GA160 W		2030	1614 9274 00	1	Pipe	
	0147 1363 03		GA90 W Energy recovery,		2035	0634 1000 27	1	Pipe coupling	
			GA110 W Energy recovery,		2040		1	Union	
			GA132 W Energy recovery,			0586 1000 30		With air dryer	
			GA160 W Energy recovery		2050		1	Pipe	
1180	0301 2344 00	2	Washer			1614 9390 00		GA90 W With air dryer,	
1200		1	Hose assembly					GA110 W With air dryer	
	1614 8957 00		GA90 W, GA110 W			1614 9391 00		GA90 W Without air dryer,	
	1614 8958 00		GA132 W, GA160 W					GA110 W Without air dryer	
	1614 9396 00		GA90 W Energy recovery,			1614 9933 00		GA132 W With air dryer,	
			GA110 W Energy recovery					GA160 W With air dryer,	
	1614 9397 00		GA132 W Energy recovery,			1614 9389 00		GA132 W Without air dryer,	
			GA160 W Energy recovery					GA160 W Without air dryer	
1201	0661 1000 25	2	Seal washer		2055	0634 1000 27	1	Pipe coupling	
1202	0686 3716 01	2	Plug		2060		1	Union	
1205	0663 2109 68	1	O-ring			0586 1000 30		With air dryer	
1210		2	Bolt		2080	1619 2861 01	2	Clamp	
	0147 1362 03		GA90 W, GA110 W,		2085	1619 5337 01	2	Bolt	
			GA132 W, GA160 W		2100	1614 9579 00	1	Support	
	0147 1372 03		GA90 W Energy recovery,		2105	1619 2766 00	2	Bolt	
			GA110 W Energy recovery,		3005		2	Bushing	
			GA132 W Energy recovery,			0605 8350 26		NPT	
			GA160 W Energy recovery						

# 14





# 17

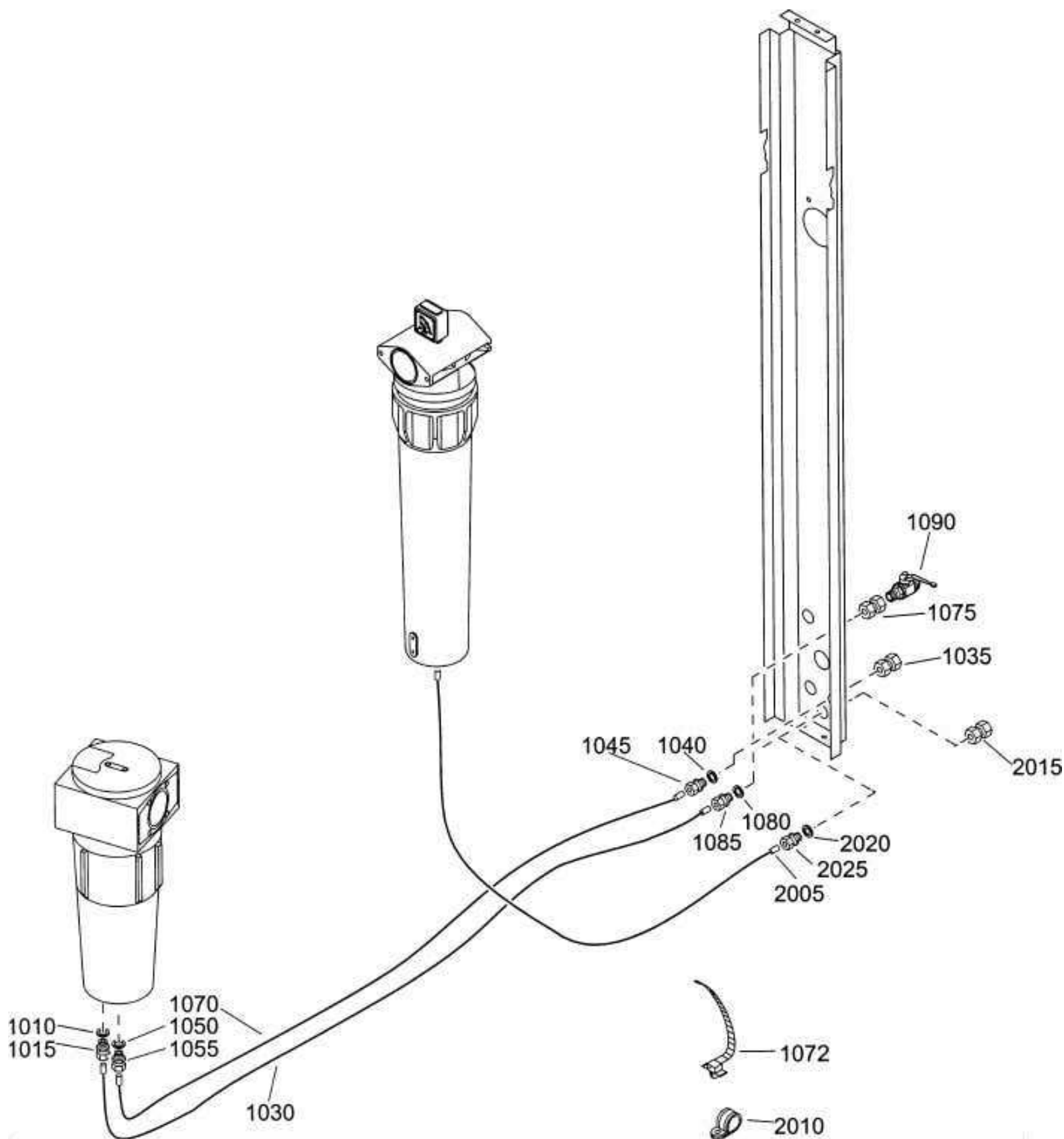


## Regulating system 2)

Ref.	Part number	Qty	Name	Remarks	Ref.	Part number	Qty	Name	Remarks
1005	1089 0574 40	1	Temp. sensor		2035		1	Hose assembly	
1010	1089 0574 40	1	Temp. sensor			0574 8845 16		GA90, GA110	
1015	1089 0574 40	1	Temp. sensor			0574 8235 32		GA90 W, GA110 W	
1025	1089 0575 28	1	Press.transducer			0574 8845 44		GA132(W), GA160(W)	
1030	1089 0575 28	1	Press.transducer		2040	1079 5840 29	1	Hexagon nipple	
1035	1089 0575 33	1	Press.transducer		2045	0661 1000 29	1	Seal washer	
1040	1089 0575 20	1	Dp transducer		2050	0661 1000 24	1	Seal washer	
1050	1900 0710 31	1	Regulator		2055	1615 3624 00	1	Nozzle	
1060	0160 6038 00	4	Screw		2060	0661 1000 24	1	Seal washer	
1065	0301 2315 00	4	Washer		2065	1079 5840 01	1	Nipple	
1070	1614 9406 00	1	Bracket		2070	0661 1000 25	1	Seal washer	
1100	1621 0920 00	1	Wire harness		2075	0580 0400 03	1	Str.coupling	
2001		1	Spacer		2080	0661 1000 30	1	Seal washer	
	1614 9237 00		GA90, GA110		2085	1614 9144 00	1	Hexagon nipple	
2002		1	O-ring		2090	0575 0361 18	1	Hose assembly	
	0663 2109 71		GA90, GA110		2095	1619 5205 00	1	Nipple	
2003		4	Cap screw		2100	0653 0500 02	1	Flat gasket	
	0211 1362 03		GA90, GA110		2105		1	Hose assembly	
<b>2005</b>	<b>&lt;&lt;&lt; &gt;&gt;&gt;</b>	<b>1</b>	<b>Unloader assembly</b>			0574 8231 26		GA90(W), GA110(W)	
2006	0663 2109 71	1	O-ring			0574 8231 35		GA132(W), GA160(W)	
2007	0301 2344 00	4	Washer		3360		1	Solenoid valve	
2008	0147 1363 03	4	Bolt			1089 0621 10		50Hz	
2010	1079 5840 19	1	Nipple			1089 0621 11		60Hz	CSA/UL
2015	0661 1000 27	1	Seal washer		4010	1900 0710 41	1	Regulator	SIOE- module
2020		1	Hose assembly		4020	1622 0661 03	1	Cable	
	0575 0791 37		GA90(W), GA110(W)		5010	1900 0710 71	1	Regulator	SIOE-
	0575 0791 46		GA132(W), GA160(W)						

# 18

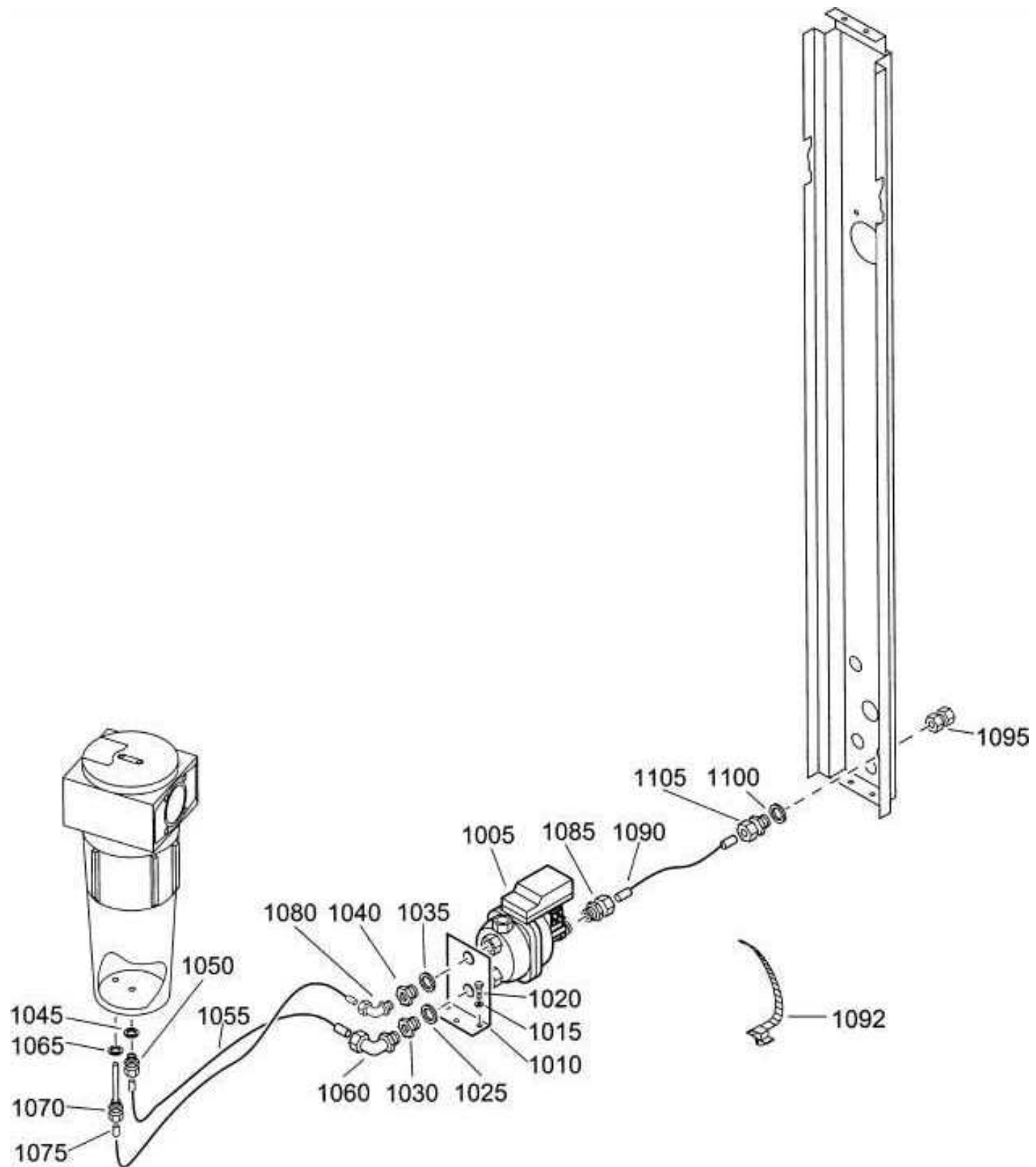
## Drain system - Basic- and DD-filter drain



61243\_06

Ref.	Part number	Qty	Name	Remarks	Ref.	Part number	Qty	Name	Remarks
1010	0661 1000 25	1	Seal washer		1075	0581 0000 86	1	Pipe coupling	
1015	0581 0000 45	1	Pipe coupling		1080	0653 1124 00	1	Flat gasket	
1030	0070 6002 06	AR	Plastic tube		1085	0581 0000 53	1	Pipe coupling	
1035	0581 0000 86	1	Pipe coupling		1090	0852 0010 33	1	Ball valve	
1040	0653 1124 00	1	Flat gasket		2005	0070 6002 06	AR	Plastic tube	
1045	0581 0000 53	1	Pipe coupling		2010	0347 6102 00	1	Hose clip	
1050	0653 1062 00	1	Flat gasket		2015	0581 0000 86	1	Pipe coupling	
1055	0581 0000 45	1	Pipe coupling		2020	0661 1000 27	1	Seal washer	

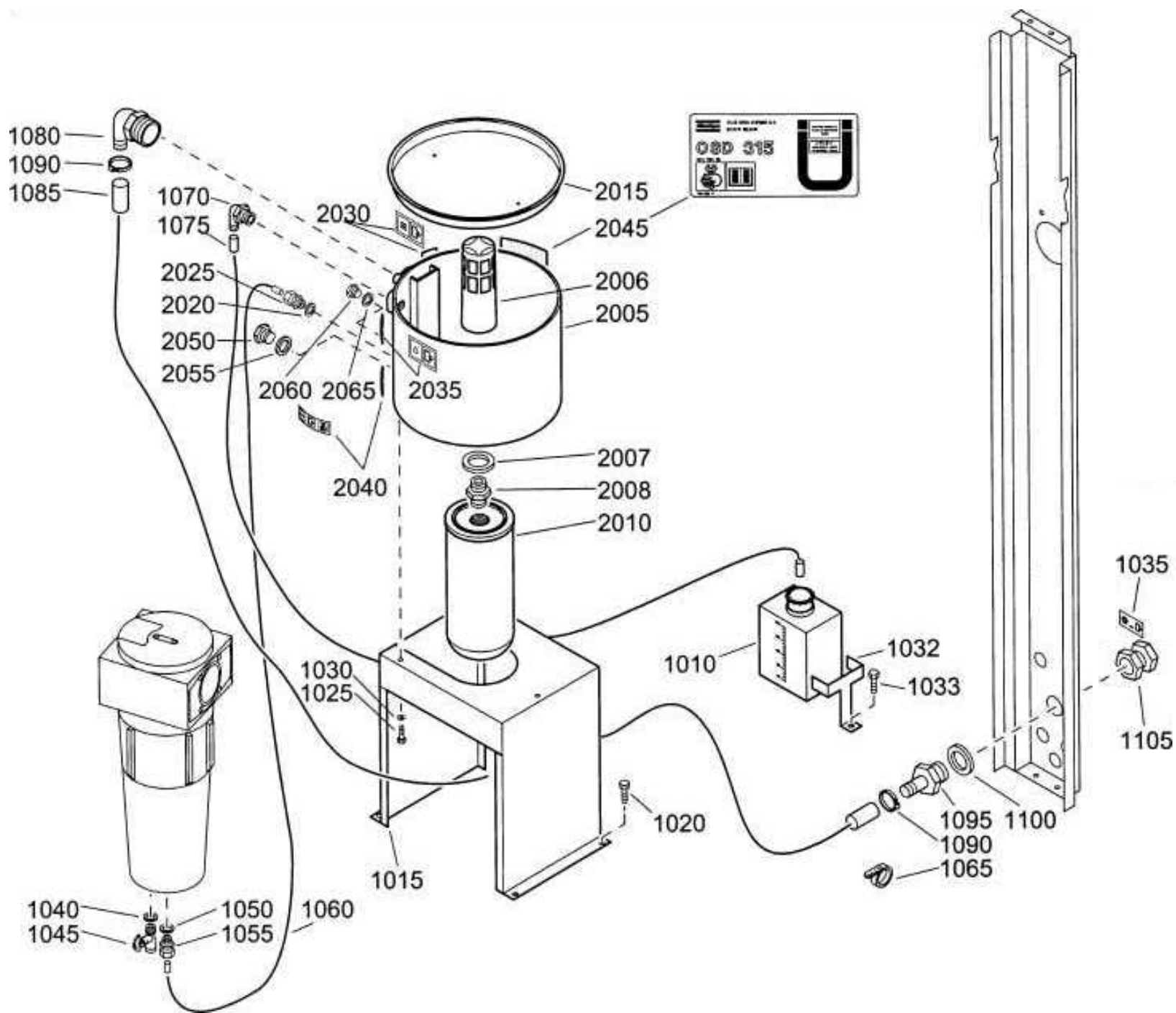
**Drain system - Electronic drain system**



61245\_06

Ref.	Part number	Qty	Name	Remarks	Ref.	Part number	Qty	Name	Remarks
1005		1	Drain valve		1055	0070 6002 13	AR	Plastic tube	
	8102 0425 80		230V 50-60Hz		1060	0581 1200 38	1	Pipe coupling	
	8102 0425 98		110V 50-60Hz		1065	0661 1000 25	1	Seal washer	
1010	1617 1768 00	1	Support		1070	1613 8084 00	1	Pipe coupling	
1015	0301 2335 00	3	Washer		1075	0070 6002 05	AR	Plastic tube	
1020	0147 1323 03	3	Bolt		1080	0581 1200 23	1	Elbow	
1025	0661 1000 29	1	Seal washer		1085	0581 0001 04	1	Pipe coupling	
1030	0605 8700 84	1	Bushing		1090	0070 6002 13	AR	Plastic tube	
1035	0661 1000 29	1	Seal washer		1092	1621 1091 00	2	Clamp	
1040	0605 8820 05	1	Bushing		1095	0581 0000 86	1	Pipe coupling	
1045	0661 1000 27	1	Seal washer		1100	0661 1000 27	1	Seal washer	
			GA90(W), GA110(W)		1105	0581 0000 71	1	Pipe coupling	

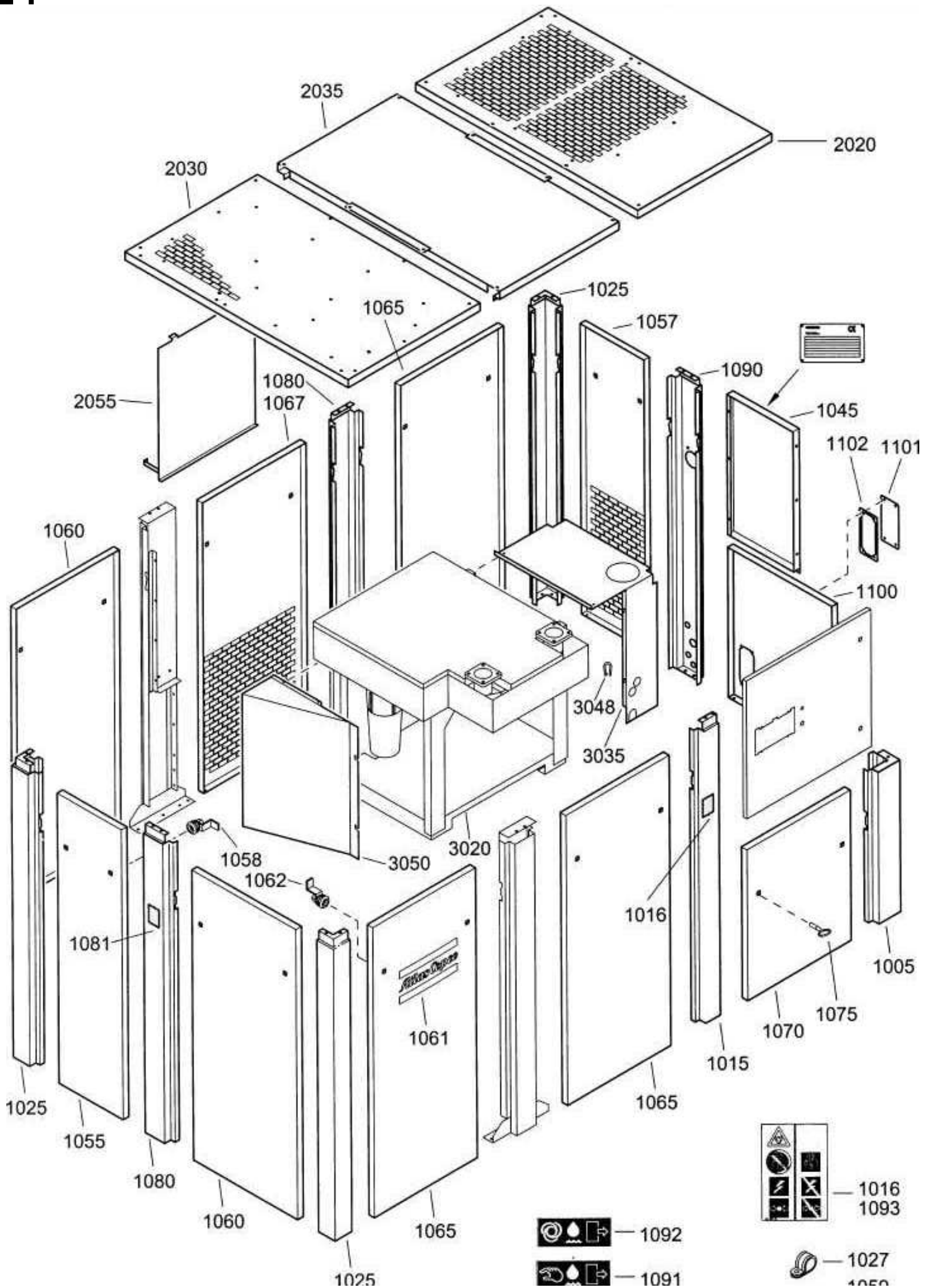
# 20



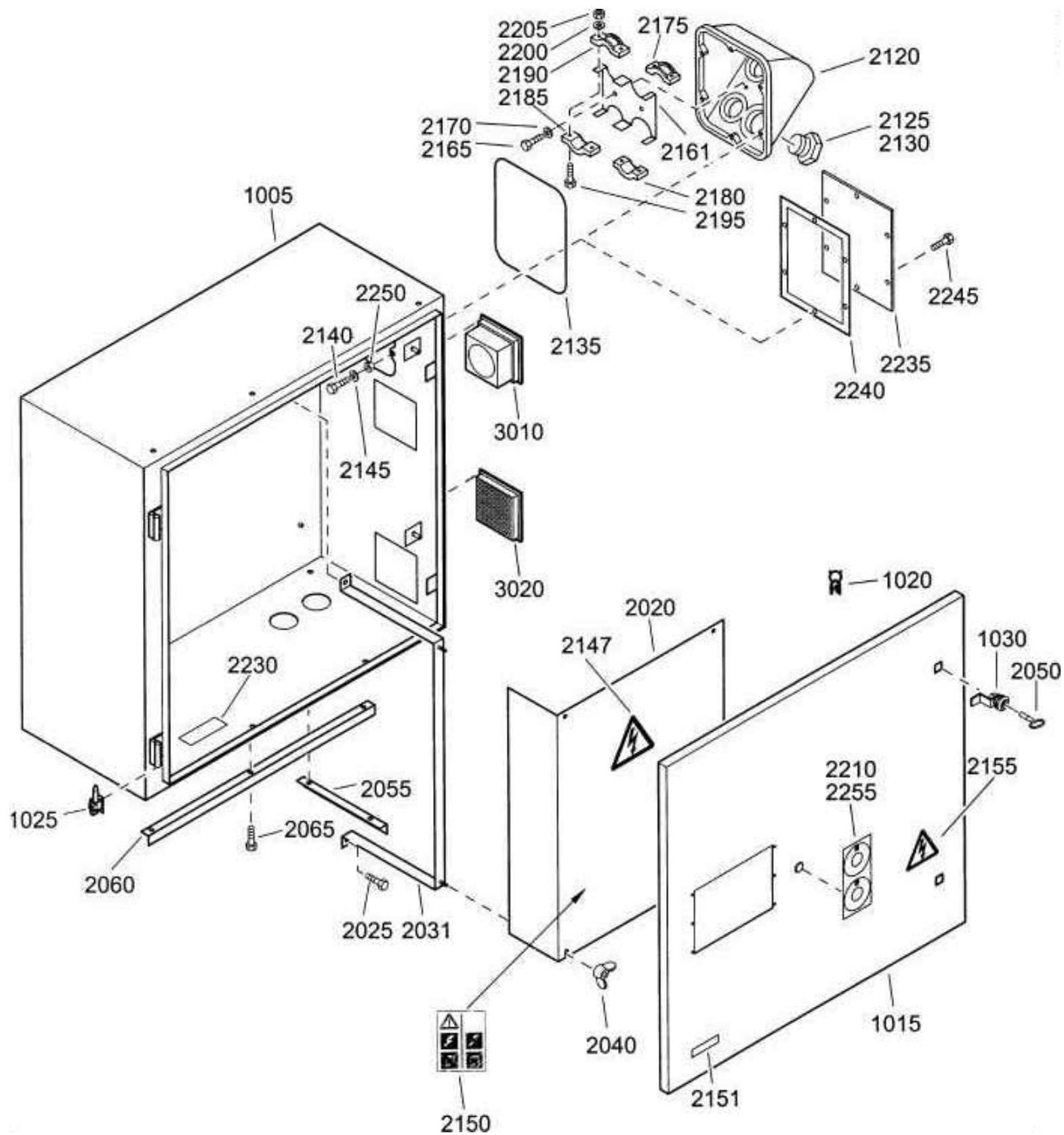
**Drain system - Oil Separator Condensate drain**

<b>Ref.</b>	<b>Part number</b>	<b>Qty</b>	<b>Name</b>	<b>Remarks</b>	<b>Ref.</b>	<b>Part number</b>	<b>Qty</b>	<b>Name</b>	<b>Remarks</b>
1010	1613 9735 00	1	Oil can		1095	1614 9876 00	1	Hose nipple	
1015	1621 9084 00	1	Support		1100	0661 1000 31	1	Seal washer	
1020	1619 2766 00	4	Bolt		1105	1614 9881 00	1	Bushing	
1025	0147 1322 03	3	Bolt		2005	1614 9351 00	1	Housing	
1030	0301 2335 00	3	Washer		2006	1613 7299 00	1	Strainer	
1032	1622 0091 00	1	Support		2007	9125 6295 00	1	Seal washer	
1033	1619 2766 00	1	Bolt		2008	1613 7297 00	1	Check valve	
1035	1079 9910 97	1	Label		2010	1614 9352 00	1	Oil filter	
1040	0661 1000 25	1	Seal washer		2015	1614 9707 00	1	Cover	
1045	0852 0010 29	1	Ball valve		2020	0661 1000 25	1	Seal washer	
1050	0661 1000 25	1	Seal washer		2025	1614 9363 00	1	Pipe coupling	
1055	0581 0000 35	1	Pipe coupling		2030	1079 9913 69	1	Inform.Label	
1060	0070 6002 03	AR	Flexible		2035	1079 9912 28	1	Information label	
1065	1621 1091 00	3	Clamp		2040	1079 9912 07	1	Information label	
1070	1613 7335 00	1	Hose nipple		2045	1079 9920 17	1	Information label	
1075	0070 6002 14	AR	Flexible		2050	0686 3716 45	1	Hexagon plug	
1080	1614 9706 00	1	Hose nipple		2055	0661 1000 27	1	Seal washer	

# 21



# 24

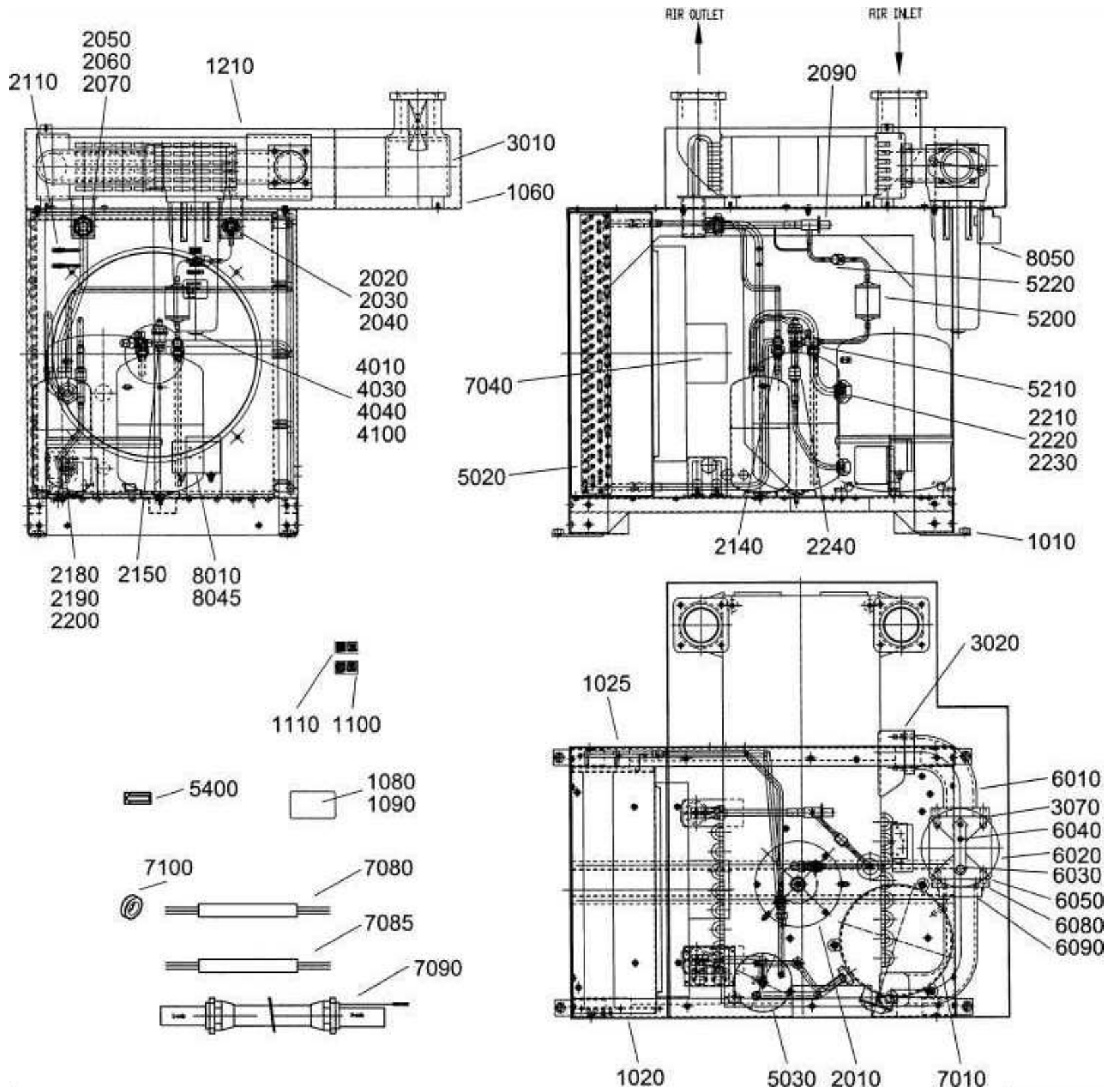




**Cubicle 2)**

Ref.	Part number	Qty	Name	Remarks	Ref.	Part number	Qty	Name	Remarks
		1	<b>Cubicle</b>						
	<b>1621 4505 80</b>		<b>HAT version</b>						
	<b>1621 4500 80</b>		<b>Others</b>						
1005		• 1	Cubicle		2151	1613 3431 00	1	Label	(CSA/UL)
	1621 4505 00		HAT version		2155	1088 1001 01	1	Warning mark	
	1621 4500 00		Others		2161	1614 6566 00	1	Plate	
1015	1621 4600 00	• 1	Door		2165	0147 1322 03	2	Bolt	
1020	1202 6584 00	• AR	Seal		2170	0301 2335 00	2	Washer	
1025	1614 9106 03	• 2	Pin		2175	1614 6562 00	2	Clamp	
1030	1619 7704 00	• 2	Lock		2180	1614 6563 00	2	Clamp	
2020	1621 9285 00	1	Screen		2185	1614 6565 00	2	Clamp	
2025	1619 2766 00	2	Bolt		2190	1614 6564 00	2	Clamp	
2031	1614 9108 00	1	Bracket		2195	0147 1250 03	8	Bolt	
2040	0296 1108 02	4	Wing nut		2200	0301 2321 00	8	Washer	
2050	1089 9154 02	1	Key		2205	0266 2108 00	8	Nut	
2055	1614 9379 00	1	Bracket		2210	1621 0478 00	1	Label	
2060	1614 9380 00	1	Bracket		2230	1613 5330 00	1	Listing mark	(CSA/UL)
2065	1619 2766 00	5	Bolt		2235	1614 7146 00	1	Flange	(CSA/UL)
2120	1614 6571 00	1	Cable box		2240	1614 7145 00	1	Gasket	(CSA/UL)
2125	1088 0524 09	2	Plug		2245	0147 1325 03	6	Bolt	(CSA/UL)
2130	1088 0524 10	2	Plug		2250	0266 2110 00	6	Nut	(CSA/UL)
2135	1614 6567 00	1	Seal		2255	1621 0478 00	1	Label	(CSA/UL)
2140	0147 1322 03	6	Bolt		3010		1	Fan	HAT version
						1089 0598 01		230V/50-60Hz	
						1089 0598 02		115V/50-60Hz	CSA/UL

# 25

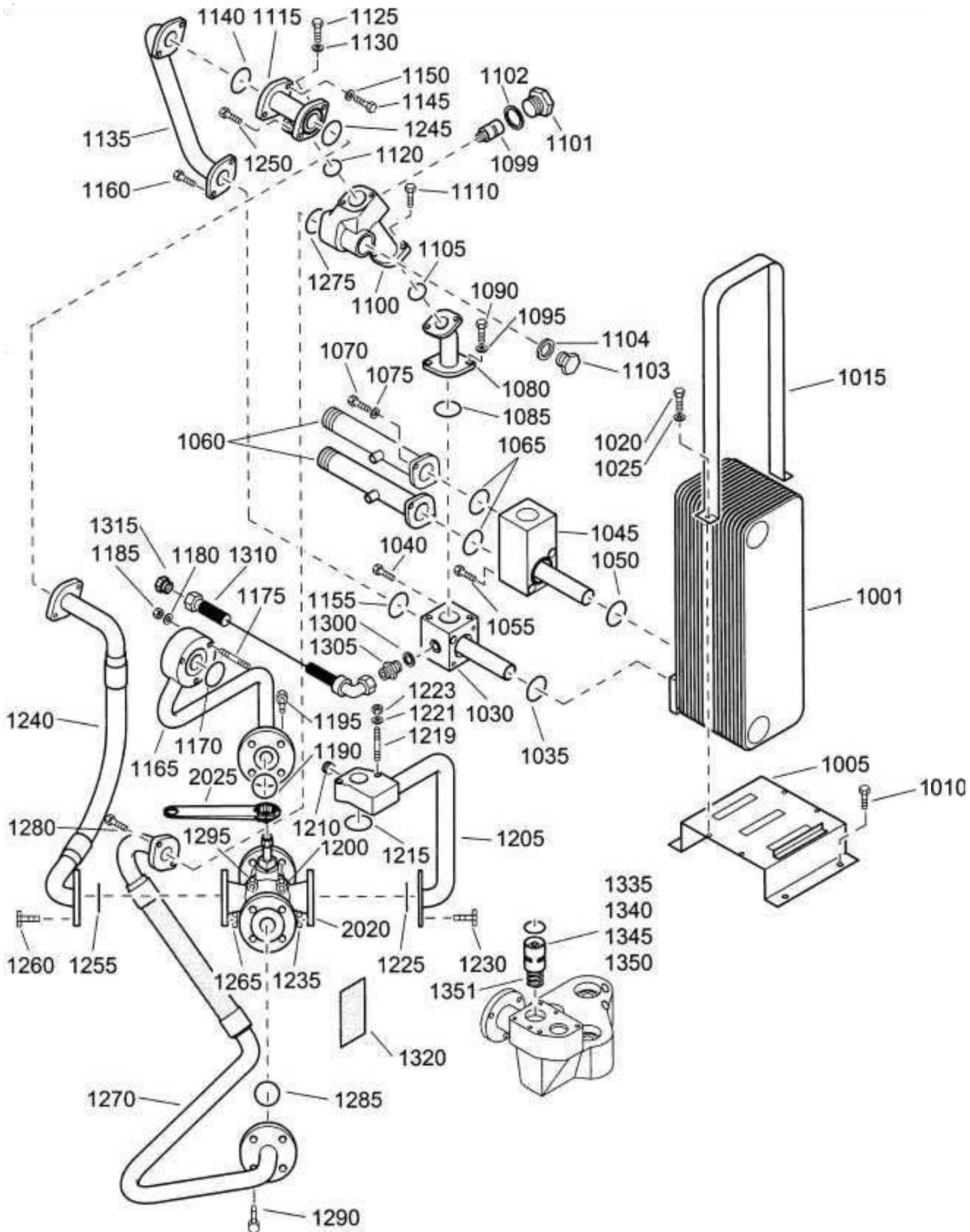


## Air dryer - GA132-160 W

Ref.	Part number	Qty	Name	Remarks	Ref.	Part number	Qty	Name	Remarks
		<b>1</b>	<b>Air dryer</b>		2180	1617 0314 00	• 1	Nut	
	<b>1617 2536 80</b>		GA132 W 220-230V/50Hz, GA160 W 220-230V/50Hz		2210	1617 2529 00	• 1	Liquid separator	
	<b>1617 2536 81</b>		GA132 W 380-415V/50Hz, GA160 W 380-415V/50Hz		3010	1617 2044 00	• 1	Heat exchanger	
	<b>1617 2536 82</b>		GA132 W 500V/50Hz, GA160 W 500V/50Hz		3020	0650 0100 09	• 1	Gasket	
	<b>1617 2536 86</b>		GA160 W 440-460V/60Hz		3070	0663 2107 46	• 1	O-ring	
	<b>1617 2536 87</b>		GA160 W 380V/60Hz		4010	0653 1062 00	• 2	Flat gasket	
	<b>1617 2536 88</b>		GA160 W 575V/60Hz		4030	0581 0000 35	• 2	Straight coupling	
1010	1617 2126 00	• 1	Frame		4040	0070 6002 05	• AR	Plastic tube	
1020	1617 2124 00	• 1	Support front		4100	0070 6002 13	• AR	Plastic tube	
1025	1617 2537 00	• 1	Support rear	1)	5020	1617 2395 01	• 1	Tube condensor	
1060	<b>1603 2123 80</b>	• 1	<b>Box ass'y</b>		5040	1617 2617 01	• 1	Regulating valve	
	1617 2123 00	•• 1	Box heat exchanger		6010	1617 1247 00	• 1	Connector	
	1617 2096 00	•• 1	Insulation bottom		6020	1613 6728 00	• 1	Waterseparator	
	1617 2097 00	•• 1	Insulation top		6030	0663 2107 46	• 2	O-ring	
1080	1617 0745 00	• 1	Data plate		7010		• 1	Refrigerant compressor	
1090	0129 3103 00	• 4	Blind rivet			1619 7674 18		GA132 W 220-230V/50Hz, GA160 W 220-230V/50Hz	
1100	1079 9915 89	• 1	Label			1619 7674 19		GA132 W 380-415V/50Hz, GA160 W 380-415V/50Hz, GA160 W 440-460V/60Hz	
1110	1079 9915 98	• 1	Label			1619 7674 21		GA160 W 380V/60Hz	
1210	1617 2630 00	• 1	Cover			1619 7674 22		GA132 W 500V/50Hz, GA160 W 500V/50Hz, GA160 W 575V/60Hz	
2020	1619 5566 04	• 1	Freon dryer		7080		• 1	Cable (compressor)	
2030	1619 5567 04	• 1	Sight glass			1617 2172 01		60Hz CSA/UL	
2040	1617 0314 00	• 1	Nut			1617 2172 03		50Hz	
2050	1617 0107 00	• 1	Sleeve		7090		• 1	Wiring (regulating)	
2070	1617 2231 01	• 1	Thermostatic valve (bulb)			1617 2173 00		60Hz CSA/UL	
2071	1617 2232 01	• 1	Thermostatic valve (orifice)			1617 2312 00		50Hz	
2072	1617 2233 01	• 1	Thermostatic valve (body)		7100	0698 0154 00	• 2	Grommet	
2090	1619 5563 02	• 4	Schraderventiel		8010	1089 9214 10	• 1	Pressure switch	
2100	1617 0488 00	• 1	Sleeve		8045	1617 2618 00	• 2	Capillar connection	
2110	1617 0476 00	• 1	Nut						
2120	1617 2527 02	• 1	Liquid gas mixer						
2130	1617 2528 02	• 1	Capacitor						
2140	1617 0476 00	• 1	Nut						
2150	1617 0488 00	• 1	Sleeve						

1) Lined with / Bekleed met / Beklädd med / Ausgekleidet mit / Garnir de / Rivestido de / Allineato con / Foret med / Revestido com / Kledd med /

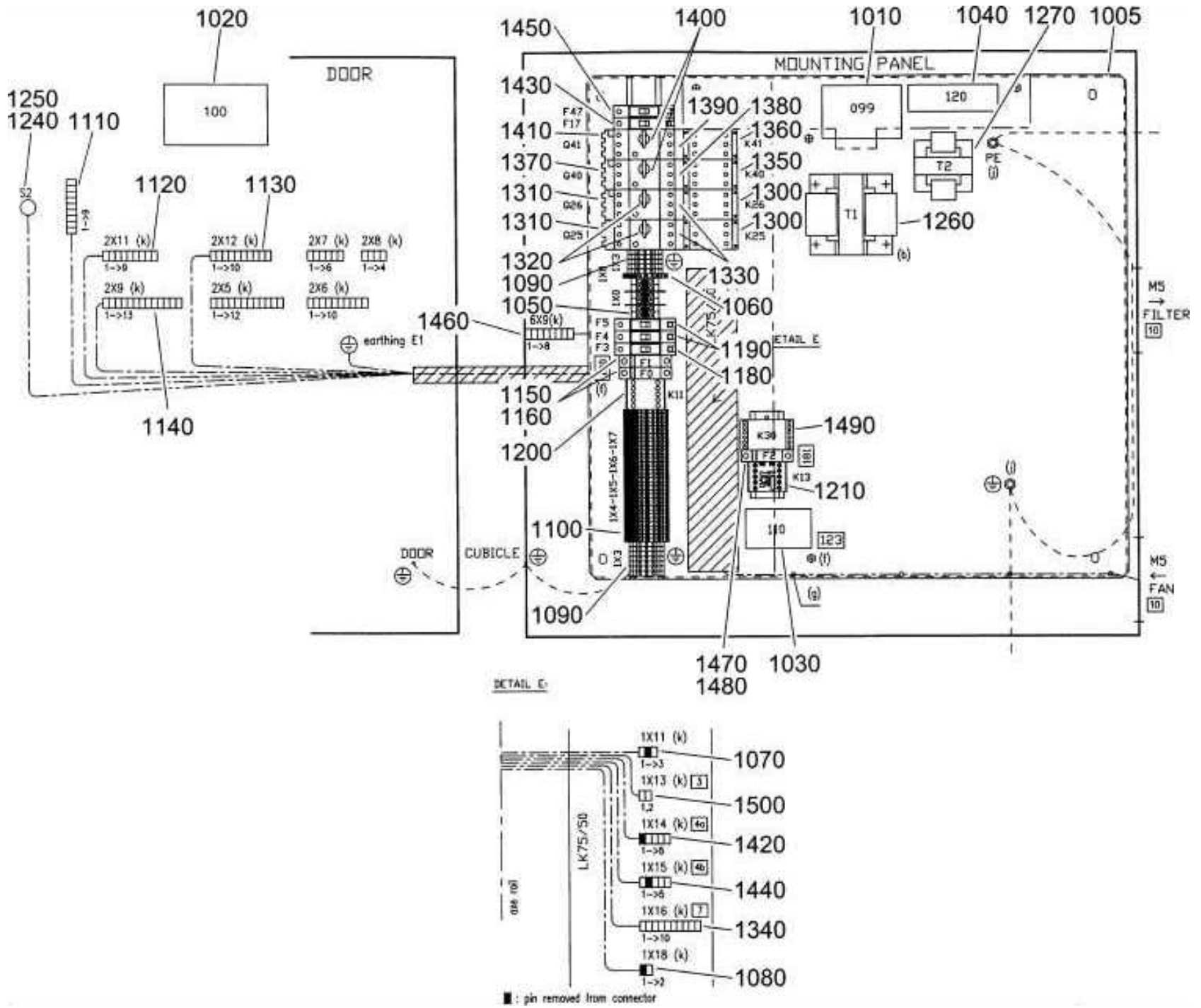
# 29



## Energy recovery system - Optional

Ref.	Part number	Qty	Name	Remarks	Ref.	Part number	Qty	Name	Remarks
1001	16 14 9407 00	1	Heat exchanger		1175	0246 1956 36	3	Stud	
1005	16 14 9408 00	1	Support		1180	0301 2344 00	3	Washer	
1010	0147 1362 03	4	Bolt		1185	0266 2111 00	3	Nut	
1015	16 14 9409 00	2	Bracket		1190	0663 2107 77	1	O-ring	
1020	0147 1328 03	4	Bolt		1195	0147 1479 03	4	Bolt	
1025	0301 2335 00	4	Washer		1200	0266 2114 00	4	Nut	
1030	16 14 9410 00	1	Connect.block		1205	16 14 9419 00	1	Pipe	
1035	0663 2107 77	1	O-ring		1210	0686 3115 52	1	Plug	
1040	0211 1375 00	2	Cap screw		1215	0663 2109 68	1	O-ring	
1045	16 14 8821 00	1	Connection pipe		1219	0246 1956 36	2	Stud	
1050	0663 2107 77	1	O-ring		1221	0301 2344 00	2	Washer	
1055	0211 1375 00	2	Cap screw		1223	0266 2111 00	2	Nut	
1060	16 14 9411 00	2	Pipe		1225	0663 2107 77	1	O-ring	
1065	0663 2107 77	2	O-ring		1230	0147 1479 03	4	Bolt	
1070	0147 1362 03	4	Bolt		1235	0266 2114 00	4	Nut	
1075	0301 2344 00	4	Washer		1240	16 14 9420 00	1	Hose assembly	
1080	16 14 9413 00	1	Pipe		1245	0663 2106 11	1	O-ring	
1085	0663 2108 00	1	O-ring		1250	0147 1362 03	2	Bolt	
1090	0147 1400 03	2	Bolt		1255	0663 2107 77	1	O-ring	
1095	0301 2358 00	2	Washer		1260	0147 1479 03	4	Bolt	
1099	16 19 7560 00	1	Thermost.valve		1265	0266 2114 00	4	Nut	
1100	16 14 6028 00	1	Therm.valve housing		1270	16 14 9421 00	1	Hose assembly	
1101	0686 3716 29	1	Plug		1275	0663 2108 00	1	O-ring	
1102	0661 1000 33	1	Seal washer		1280	0147 1362 03	2	Bolt	
1103	0686 3716 07	1	Plug		1285	0663 2107 77	1	O-ring	
1104	0661 1000 30	1	Seal washer		1290	0147 1479 03	4	Bolt	
1105	0663 2108 00	1	O-ring		1295	0266 2114 00	4	Nut	
1110	0147 1402 03	2	Bolt		1300	0653 1124 00	1	Flat gasket	
1115	16 14 7152 00	1	Tee		1305	1079 5840 15	1	Nipple	
1120	0663 2106 11	1	O-ring		1310	0574 8235 07	1	Hose assembly	
1125	0147 1363 03	2	Bolt		1315	16 14 9252 00	1	Plug	
1130	0301 2344 00	2	Washer		1320	1079 9906 57	1	Instruct.label	
1135	16 14 9414 00	1	Pipe		1335	<b>1202 5869 01</b>	1	Thermost.valve 70°C - 85°C	
1140	0663 2106 11	1	O-ring		1340	<b>1202 5869 02</b>	1	Thermost.valve 60°C - 75°C	
1145	0147 1362 03	2	Bolt		1345	<b>1202 5869 03</b>	1	Thermost.valve 65°C - 80°C	
1150	0301 2344 00	2	Washer		1350	<b>1202 5869 04</b>	1	Thermost.valve 75°C - 90°C	
1155	0663 2107 77	1	O-ring		1351	1202 5868 00	1	Spring	
1160	0147 1362 03	2	Bolt			<b>16 14 6000 82</b>	1	4-way valve	

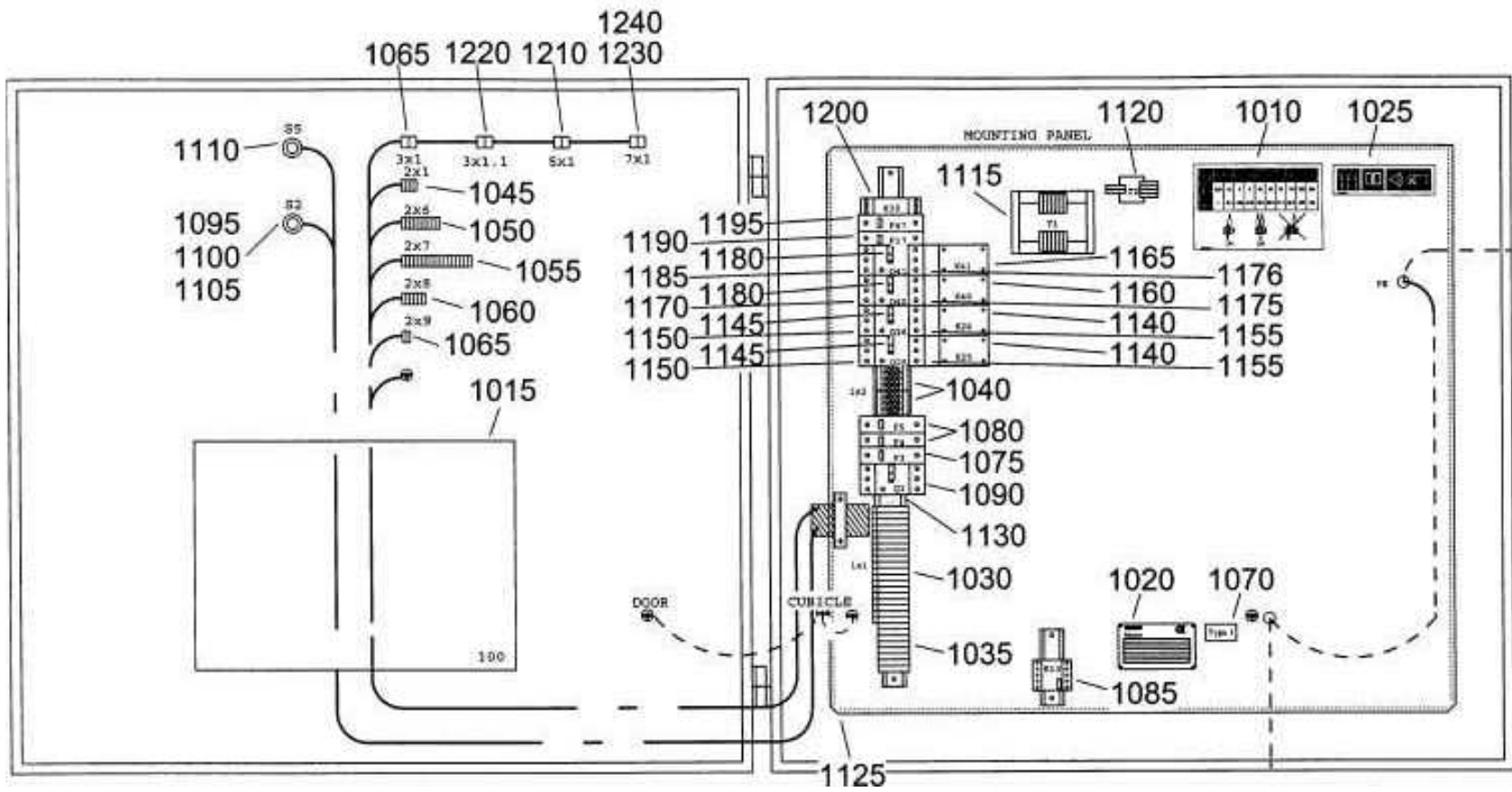
# 38



## Start cubicle, without starter - Control Voltage 230/24V - Full options 2)

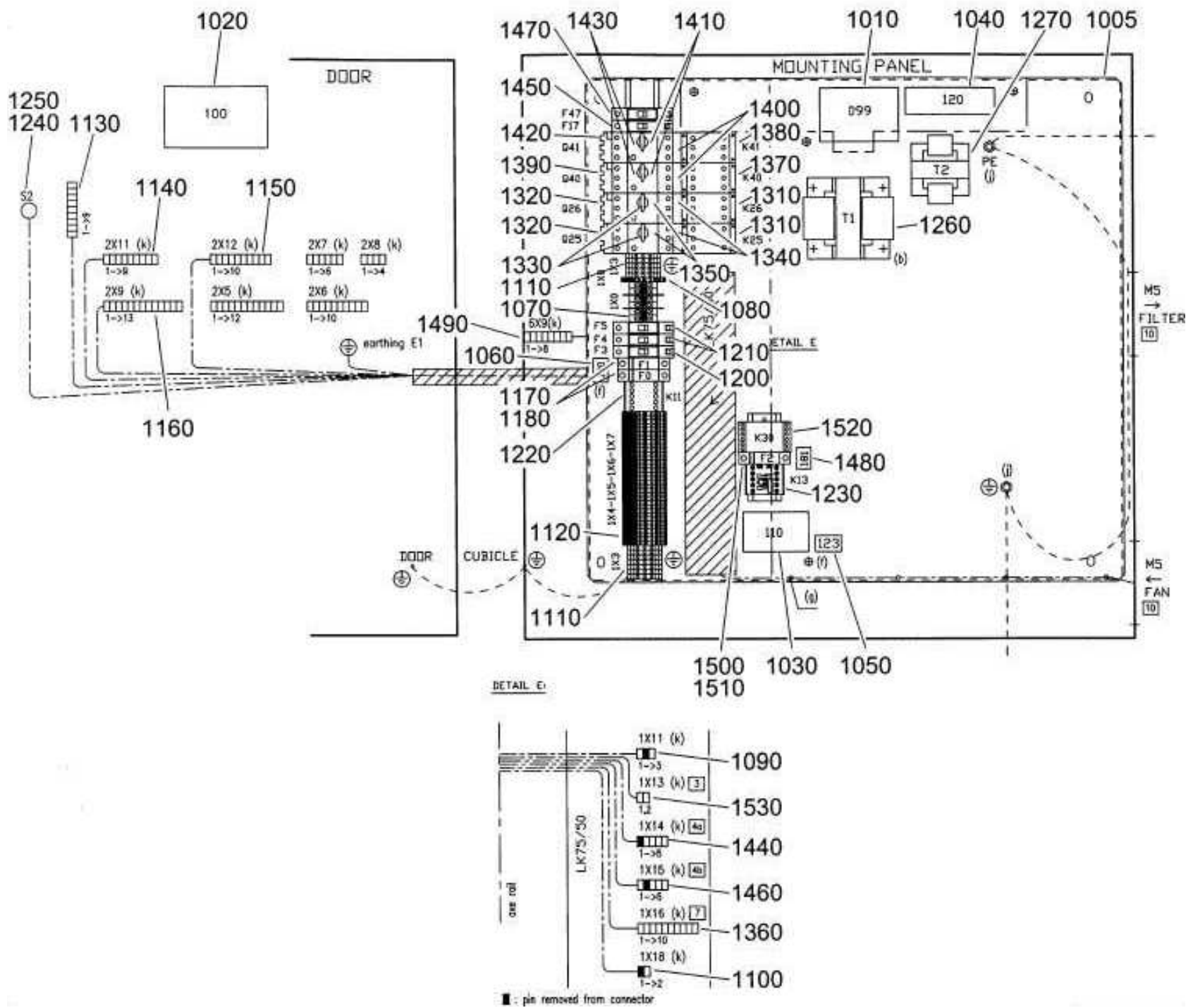
Ref.	Part number	Qty	Name	Remarks	Ref.	Part number	Qty	Name	Remarks
	<b>1900 3127 01</b>	<b>1</b>	<b>Control panel</b>			1089 9416 06	1		Water cooled
			GA90-160 50/60Hz		1340	1088 0031 10	• 1	Connector	1X16
1005	1614 9110 00	• 1	Mounting plate		1350		• 1	Contact	
1010	1079 9906 09	• 1	Label			1089 9415 23		1)2)3)12)15)17)	
1020	9823 1821 12	• 1	Service diagram			1089 9415 31		14)18)	
1030	1613 6639 00	• 1	Data plate			1089 9415 21		4)5)	
1040	1079 9901 68	• 1	Label			1089 9415 22		6)7)8)9)10)11)13)16)19)20)	
1050	1089 0506 06	• 6	Terminal 16-1P		1360	1089 9415 11	• 1	Contact	Air cooled
1060		• 1	Terminal 4mm <sup>2</sup>		1370		• 1	Circuit breaker	
1070	1088 0031 03	• 1	Connector	1X11		1089 9416 73		1)3)12)	
1080	1088 0031 02	• 1	Connector	1X18		1089 9416 84		14)18)	
1090	1089 0506 27	• 13	Terminal	1X3		1089 9416 70		4)5)	
1100	1089 9398 11	• 29	Terminal	1X4-1X5- 1X6-1X7		1089 9416 71		8)9)10)11)13)16)19)20)	
1110	1088 0031 49	• 1	Connector	2X10		1089 9416 74		2)15)	
1120	1088 0031 29	• 1	Connector	2X11		1089 9416 72		17)	
1130	1088 0031 30	• 1	Connector	2X12	1380		• 1	Connecting element	
1140	1088 0031 13	• 1	Connector	2X9		1089 9416 90		14)18)	
1150	1089 0612 25	• 2	Fuse			1089 9416 91		Others	
1160	1089 0612 01	• 2	Fuse holder		1390	1089 9416 06	• 1	Connection element	Air cooled
1180	1089 9203 11	• 1	Circuit breaker		1400		•	Contact block	
1190	1089 9203 11	• 2	Circuit breaker			1089 9416 07	2		Air cooled
1200	1089 9415 17	• 1	Contact			1089 9416 07	1		Water cooled
1210	1089 9438 02	• 1	Relay		1410		• 1	Circuit breaker	Air cooled
1240	1089 0362 51	• 1	Emergency stop button			1089 9416 24		1)12)14)18)	
1250	1089 0362 58	• 1	Contact block			1089 9416 21		4)5)13)16)	
1260	1089 9436 07	• 1	Transformer			1089 9416 20		6)7)8)19)	
1270	1089 9136 93	• 1	Transformer			1089 9416 25		2)15)	
1300		•	Contact			1089 9416 23		3)9)10)11)17)20)	
	1089 9415 22	1	1)2)12)15)	Air cooled	1420	1088 0031 05	• 1	Connector	1X14
	1089 9415 12	1	4)5)6)7)	Air cooled	1430	1089 9203 31	• 1	Circuit breaker	
	1089 9415 13	1	9)10)11)20)	Air cooled	1440	1088 0031 05	• 1	Connector	1X15
	1089 9415 22	2	14)18)	Air cooled	1450	1089 9203 31	• 1	Circuit breaker	
	1089 9415 12	2	8)13)16)19)	Air cooled	1460	1088 0031 08	• 1	Connector	6X9
	1089 9415 13	2	3)17)	Air cooled	1470	1089 0612 24	• 1	Fuse	
	1089 9415 11	1		Water cooled	1480	1089 0612 01	• 1	Fuse holder	
1310		•	Circuit breaker		1490		• 1	Phase sequence relay	
	1089 9416 71	1	1)2)12)15)	Air cooled		1089 9461 03		6)7)8)10)11)17)19)	
	1089 9416 28	1	4)5)6)7)	Air cooled		1089 9461 01		Others	
	1089 9416 29	1	9)10)11)20)	Air cooled	1500	1088 0031 02	• 1	Connector	1X13
	1089 9416 71	2	14)18)	Air cooled	1)	GA90 230V/50Hz			
	1089 9416 28	2	8)13)16)19)	Air cooled	2)	GA90 220-230V/60Hz			
	1089 9416 29	2	3)17)	Air cooled	3)	GA160 380V/60Hz			
	1089 9416 24	1	1)2)12)14)15)		4)	GA90 400V/50Hz			
			18)	Water cooled	5)	GA110 400V/50Hz			
	1089 9416 21	1	4)5)9)13)16)		6)	GA90 500V/50Hz			
			20)	Water cooled	7)	GA110 500V/50Hz			
	1089 9416 20	1	6)7)8)10)11)		8)	GA132 500V/50Hz			
			19)	Water cooled	9)	GA90 380V/60Hz			
1320		•	Contact block		10)	GA90 440-460V/60Hz			
	1089 9416 07	1	1)2)4)5)6)7)9)	Air cooled	11)	GA110 440-460V/60Hz			
	1089 9416 07	1	10)11)12)15)		12)	GA110 230V/50Hz			
			20)	Air cooled	13)	GA160 400V/50Hz			
	1089 9416 07	2	3)8)13)14)	Air cooled	14)	GA132 230V/50Hz			
	1089 9416 07	2	16)17)18)19)	Air cooled	15)	GA110 220-230V/60Hz			
	1089 9416 07	1		Water cooled	16)	GA132 400V/50Hz			
1330		•	Connection element		17)	GA160 440-460V/60Hz			
	1089 9416 91	1	1)2)12)15)	Air cooled	18)	GA160 230V/50Hz			
	1089 9416 06	1	4)5)6)7)9)10)		19)	GA160 500V/50Hz			
			11)20)	Air cooled					

# 39





# 40



**Start cubicle, without starter - Control Voltage 115/24V - CSA/UL - Full options 2)**

Ref.	Part number	Qty	Name	Remarks	Ref.	Part number	Qty	Name	Remarks
	<b>1900 3128 01</b>	<b>1</b>	<b>Control panel C,U</b>		1350			Terminal block	
			GA90-160 60Hz			1089 9416 75	1	1)2)3)5)	Air cooled
1005	1614 9110 00	• 1	Mounting plate			1089 9416 75	2	4)6)	Air cooled
1010	1079 9906 09	• 1	Label			1089 9416 75	1	1)2)3)4)5)6)	Water cooled
1020	9823 1821 12	• 1	Service diagram		1360	1088 0031 10	• 1	Connector	1X16
1030	1614 8949 00	• 1	Data plate		1370		• 1	Contacteur	
1040	1079 9901 68	• 1	Label			1089 9415 25		1)3)4)	
1050	1079 9911 01	• 1	Label			1089 9415 26		6)	
1060	1079 9922 70	• 1	Fuse label			1089 9415 24		2)5)	
1070	1089 0506 06	• 6	Terminal 16-1P		1380	1089 9415 24	• 1	Contacteur	Air cooled
1080		• 1	Terminal 4mm <sup>2</sup>		1390		• 1	Circuit breaker	
1090	1088 0031 03	• 1	Connector	1X11		1089 9416 71		1)3)4)	
1100	1088 0031 02	• 1	Connector	1X18		1089 9416 72		6)	
1110	1089 0506 27	• 13	Terminal	1X3		1089 9416 70		2)5)	
1120	1089 9398 11	• 29	Terminal	1X4-1X5- 1X6-1X7	1400		•	Connecting element	
1130	1088 0031 49	• 1	Connector	2X10		1089 9416 91	2		Air cooled
1140	1088 0031 29	• 1	Connector	2X11		1089 9416 91	1		Water cooled
1150	1088 0031 30	• 1	Connector	2X12	1410		•	Contact block	
1160	1088 0031 13	• 1	Connector	2X9		1089 9416 07	2		Air cooled
1170	1089 9168 26	• 2	Fuse			1089 9416 07	1		Water cooled
1180	1089 0612 01	• 2	Fuse holder		1420		• 1	Circuit breaker	Air cooled
1200	1089 9203 38	• 1	Circuit breaker			1089 9416 62		1)3)6)	
1210	1089 9203 36	• 2	Circuit breaker			1089 9416 61		2)4)5)	
1220	1089 9415 17	• 1	Contacteur		1430		•	Contact block	
1230	1089 9438 03	• 1	Relay			1089 9416 75	2		Air cooled
1240	1089 0362 51	• 1	Emergency stop button			1089 9416 75	1		Water cooled
1250	1089 0362 58	• 1	Contact block		1440	1088 0031 05	• 1	Connector	1X14
1260	1089 9436 08	• 1	Transformer		1450	1089 9203 31	• 1	Circuit breaker	
1270	1089 9436 11	• 1	Transformer		1460	1088 0031 05	• 1	Connector	1X15
1310		•	Contacteur		1470	1089 9203 31	• 1	Circuit breaker	
	1089 9415 24	1	1)2)3)5)	Air cooled	1480	1079 9922 78	• 1	Fuse label	
	1089 9415 24	2	4)6)	Air cooled	1490	1088 0031 08	• 1	Connector	6X9
	1089 9415 24	1	1)2)3)4)5)6)	Water cooled	1500	1089 9168 24	• 1	Fuse	
1320		•	Circuit breaker		1510	1089 0612 01	• 1	Fuse holder	
	1089 9416 69	1	1)3)	Air cooled	1520		• 1	Watch relay	
	1089 9416 67	1	2)5)	Air cooled		1089 9461 03		1)3)6)	
	1089 9416 69	2	6)	Air cooled		1089 9461 04		2)4)5)	
	1089 9416 67	2	4)	Air cooled	1530	1088 0031 02	• 1	Connector	1X13
	1089 9416 61	1	1)3)6)	Water cooled					
	1089 9416 60	1	2)4)5)	Water cooled	1)	GA90 440-460V/60Hz			
1330		•	Contact block		2)	GA90 575V/60Hz			
	1089 9416 07	1	1)2)3)5)	Air cooled	3)	GA110 440-460V/60Hz			
	1089 9416 07	2	4)6)	Air cooled	4)	GA160 575V/60Hz			
	1089 9416 07	1	1)2)3)4)5)6)	Water cooled	5)	GA110 575V/60Hz			
1340		•	Connecting element		6)	GA160 440-460V/60Hz			
	1089 9416 01	1	1)2)3)5)	Air cooled					

## 41

## Service kits

Ref.	Part number	Qty	Name	Remarks	Ref.	Part number	Qty	Name	Remarks
	<b>2906 0092 00</b>	<b>1</b>	<b>Air/oil filter kit</b>			0663 2109 71 •	1	O-ring	
	0653 1046 00 •	1	Flat gasket			1202 7003 00 •	1	Gasket	
	0653 1100 00 •	1	Flat gasket			<b>2906 0563 00</b>	<b>1</b>	<b>Unloading valve kit</b>	
	0653 1124 00 •	1	Flat gasket			0663 2109 71 •	2	O-ring	
	0661 1000 25 •	2	Seal washer			0663 2109 73 •	2	O-ring	
	0661 1000 27 •	3	Seal washer			0663 9868 00 •	1	O-ring	
	0661 1000 31 •	1	Seal washer			2906 6021 00 •	1	Piston assy	
	1030 0979 99 •	1	Air filter element			1614 9156 00 •	1	Spring	
	1613 6105 90 •	3	Oil filter element			1619 6142 00 •	1	Sealring	
						1619 6143 00 •	1	Sealring	
	<b>2906 0093 00</b>	<b>1</b>	<b>Check valve kit</b>			<b>2906 0564 00</b>	<b>1</b>	<b>Oil separator kit</b>	
	0661 1000 25 •	1	Seal washer			<b>GA90 (W), GA110 (W)</b>			
	0663 2106 18 •	1	O-ring			0663 2106 17 •	1	O-ring	
	0663 2106 20 •	1	O-ring			0663 2109 45 •	2	O-ring	
	2254 5324 00 •	1	Check valve			1614 9054 99 •	1	Oil separator element	
	2254 8075 00 •	1	Spring			2906 0571 00 •	1	Flexmaster joint kit	
	<b>2906 0094 00</b>	<b>1</b>	<b>Oil stop valve kit</b>			<b>2906 0565 00</b>	<b>1</b>	<b>Oil separator kit</b>	
	0661 1000 25 •	1	Seal washer			<b>GA132 (W), GA160 (W)</b>			
	0663 2106 11 •	2	O-ring			0663 2106 17 •	1	O-ring	
	0663 2106 12 •	1	O-ring			0663 2109 45 •	2	O-ring	
	0663 2106 15 •	1	O-ring			1614 9056 99 •	1	Oil separator element	
	0663 2108 12 •	1	O-ring			2906 0572 00 •	1	Flexmaster joint kit	
	0663 2109 68 •	1	O-ring			<b>2906 0566 00</b>	<b>1</b>	<b>Cooler kit</b>	
	2254 9868 00 •	1	Spring			<b>GA90 - 160</b>			
	<b>2906 0095 00</b>	<b>1</b>	<b>Min. pressure valve kit</b>			0663 2106 15 •	1	O-ring	
	0663 2106 58 •	1	O-ring			0663 2106 17 •	1	O-ring	
	0665 0700 89 •	1	Sealring			0663 2109 68 •	4	O-ring	
	1614 6957 00 •	1	Washer			<b>2906 0567 00</b>	<b>1</b>	<b>Cooler kit</b>	
	2254 9215 00 •	1	Lockplate			<b>GA90 W - 160 W</b>			
	<b>2906 0170 00</b>	<b>1</b>	<b>Oil filter kit</b>			0634 1000 49 •	2	Pipe coupling element	
	0653 1046 00 •	1	Flat gasket			0663 2106 17 •	2	O-ring	
	0653 1100 00 •	1	Flat gasket			0663 2109 68 •	2	O-ring	
	0653 1124 00 •	1	Flat gasket			<b>2906 0569 00</b>	<b>1</b>	<b>Gearbox overhaul kit</b>	
	0661 1000 25 •	2	Seal washer			0211 1409 00 •	8	Cap screw	
	0661 1000 27 •	3	Seal washer			0506 0100 08 •	1	Bearing	
	0661 1000 31 •	1	Seal washer			0508 2158 01 •	1	Bearing	
	1613 6105 90 •	3	Oil filter element			0663 2107 76 •	1	O-ring	
						1614 9429 00 •	1	Sealring	
	<b>2906 0186 00</b>	<b>1</b>	<b>Compressor element</b>			2252 5478 00 •	1	Bushing	
			<b>overhaul kit</b>			<b>2906 0571 00</b>	<b>1</b>	<b>Flexmaster joint</b>	
	0211 1407 00 •	6	Cap screw			<b>GA90 (W), GA110 (W)</b>			
	0508 2115 01 •	2	Roller bearing			0291 1114 00 •	2	Locknut	
	0653 1124 00 •	2	Flat gasket			0300 0276 03 •	4	Washer	
	0663 7154 00 •	2	O-ring			1614 9115 00 •	2	Rubber joint	
	1079 5081 05 •	2	Bearing			1614 9490 00 •	4	Absorber	
	1616 5380 00 •	2	Wave spring			<b>2906 0572 00</b>	<b>1</b>	<b>Flexmaster joint</b>	
	1616 5603 70 •	2	Spacer			<b>GA132 (W), GA160 (W)</b>			
	1616 6446 00 •	1	Gasket			0291 1114 00 •	2	Locknut	
	<b>2906 0219 00</b>	<b>1</b>	<b>Exchange element</b>			0300 0276 03 •	4	Washer	
			<b>installation kit</b>			1614 9064 00 •	2	Rubber joint	
	0211 1409 00 •	3	Cap screw driven gear			1614 9490 00 •	4	Absorber	
	0337 6074 00 •	1	Key driven gear						
	0663 2104 63 •	1	O-ring						
	0663 2106 15 •	1	O-ring						
	0663 2106 20 •	1	O-ring						

Ref.	Part number	Qty	Name	Remarks
	<b>2906 0573 00</b>	<b>1</b>	<b>Maintenance kit - 4000h or yearly</b>	
	0661 1000 25 •	1	Seal washer	
	0663 2106 18 •	1	O-ring	
	0663 2106 20 •	1	O-ring	
	2254 8075 00 •	1	Spring	
	2906 0094 00 •	1	Oil stop valve kit	
	2906 0095 00 •	1	Min press valve kit	
	<b>2906 0574 00</b>	<b>1</b>	<b>GA90(W), GA110(W) - Maintenance kit - 8000h or every two years</b>	
	0663 2107 77 •	1	O-ring	
	1619 7560 00 •	1	Thermostatic valve	
	2900 1017 00 •	1	Drain valve kit	
	2906 0092 00 •	1	Air/oil filter kit	
	2906 0093 00 •	1	Check valve kit	
	2906 0094 00 •	1	Oil stop valve kit	
	2906 0095 00 •	1	Min press valve kit	
	2906 0563 00 •	1	Unloading valve kit	
	2906 0564 00 •	1	Oil separator kit	
	2906 0571 00 •	2	Flexmaster joint kit	
	<b>2906 0575 00</b>	<b>1</b>	<b>GA132(W), GA160(W) - Maintenance kit - 8000h or every two years</b>	
	0663 2107 77 •	1	O-ring	
	1619 7560 00 •	1	Thermostatic valve	
	2901 0301 00 •	1	Drain valve kit	
	2906 0092 00 •	1	Air/oil filter kit	
	2906 0093 00 •	1	Check valve kit	
	2906 0094 00 •	1	Oil stop valve kit	
	2906 0095 00 •	1	Min press valve kit	
	2906 0563 00 •	1	Unloading valve kit	
	2906 0565 00 •	1	Oil separator kit	
	2906 0572 00 •	2	Flexmaster joint kit	
	<b>2906 0578 00</b>	<b>1</b>	<b>Seal washer kit</b>	
	0653 0500 08 •	3	Flat Cu gasket	
	0653 1046 00 •	3	Flat Cu gasket	
	0653 1062 00 •	12	Flat Cu gasket	
	0653 1100 00 •	3	Flat Cu gasket	
	0653 1124 00 •	3	Flat Cu gasket	
	0653 1165 00 •	3	Flat Cu gasket	
	0653 1189 00 •	3	Flat Cu gasket	
	0653 1227 00 •	3	Flat Cu gasket	
	0653 9078 00 •	3	Flat Cu gasket	
	0661 1000 25 •	9	Seal ring	
	0661 1000 27 •	12	Seal ring	
	0661 1000 29 •	6	Seal ring	
	0661 1000 31 •	3	Seal ring	
	0661 1000 36 •	3	Seal ring	