

BS 50
BS 60

A 21

B 21

C 21

D 23

KAESER COMPRESSORS, Inc.

239 Industrial Drive • P.O. Box 7416 • Fredericksburg, Virginia 22404
Tel. (703) 898 55 00 • Fax. (703) 898 55 20

I N D E X

1

Section 1:	INTRODUCTION		
	1. Foreword		2
	2. Description		2
	3. To order parts		2
	4. Recommended spare parts list		2
	5. Caution		2
Section 2:	PARTS LIST	Code/Drawing No	
	Frame, casing	A21	3
	Driving system	B21	4-5
	Oil tubes, vent lines	C21	6
	Control tubes, compressed air tubes	D23	7-8
	Vent valve	2.1128.0	9
	Inlet valve	4.7387.1	10
	Minimum pressure check valve	4.7342.0	11
	Check valve	4.7393.2	12
	Combination valve	4.8870.1	13
	Control valve	2.0712.0	14
	Oil stop valve	2.0703.0	15

Section 3: Recommended spare parts list 16-19

Caution:

If not otherwise indicated all measurements in mm

R = Withword pipe thread

G = Pipe thread ISO 228

M = Metric ISO thread

SECTION 1

I N T R O D U C T I O N

1. FOREWORD

This manual is provided for the operator's use and reference when ordering parts. An illustrated parts breakdown is included for identification. All compressor parts meet the manufacturer's highest quality used in the manufacture of the original equipment.

2. DESCRIPTION

The parts breakdown lists every part, assembly and sub-assembly of the compressor unit. Each part is identified with a number. The location of and relationship between parts are clearly illustrated. Questions pertaining to the number, description and quantities needed for each assembly are dealt with in the following pages.

3. TO ORDER PARTS

When ordering parts, furnish the following information to prevent any error:

- Model designation and serial number of the unit as shown on compressor nameplate.
- Reference number, part number, description and quantity required as listed.

4. RECOMMENDED SPARE PARTS LIST

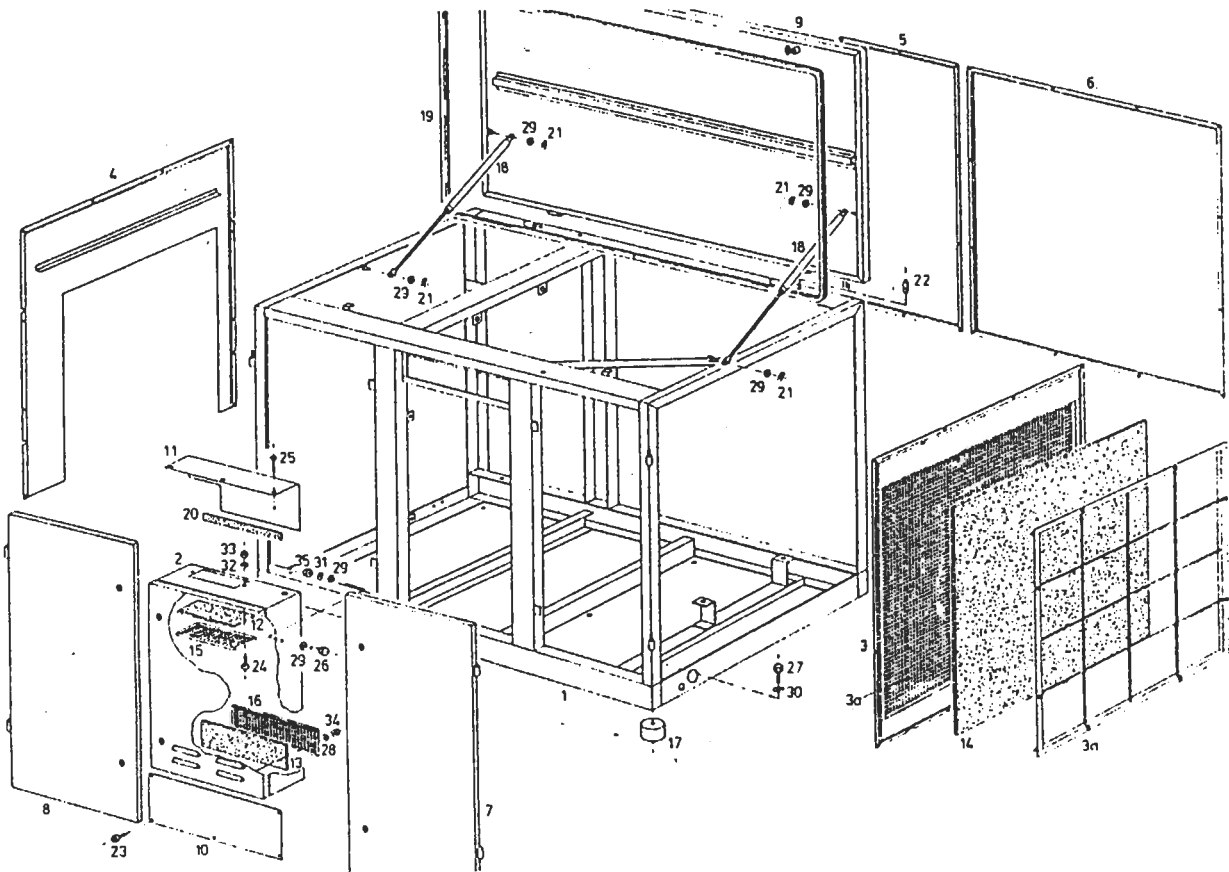
A recommended spare parts list is provided at the end of this manual. The list indicates the description, part number, the quantity used in the compressor, and minimum quantities which should be carried to ensure maximum protection of the compressor. The recommended spare parts inventory to be kept on hand varies according to the location of the nearest distributor, and is broken down as follows:

- A. Local distributor
- B. Nearby distributor
- C. Remote distributor.

5. CAUTION

NEVER use parts other than the ones approved by the manufacturer and listed in this parts manual. The use of parts not approved by the manufacturer may result in hazardous conditions, over which the manufacturer has no control, bodily injury, and damage to the compressor unit. Such action would invalidate the manufacturer's warranty of the compressor unit.

Frame, Casing
BS 50, BS 60 type

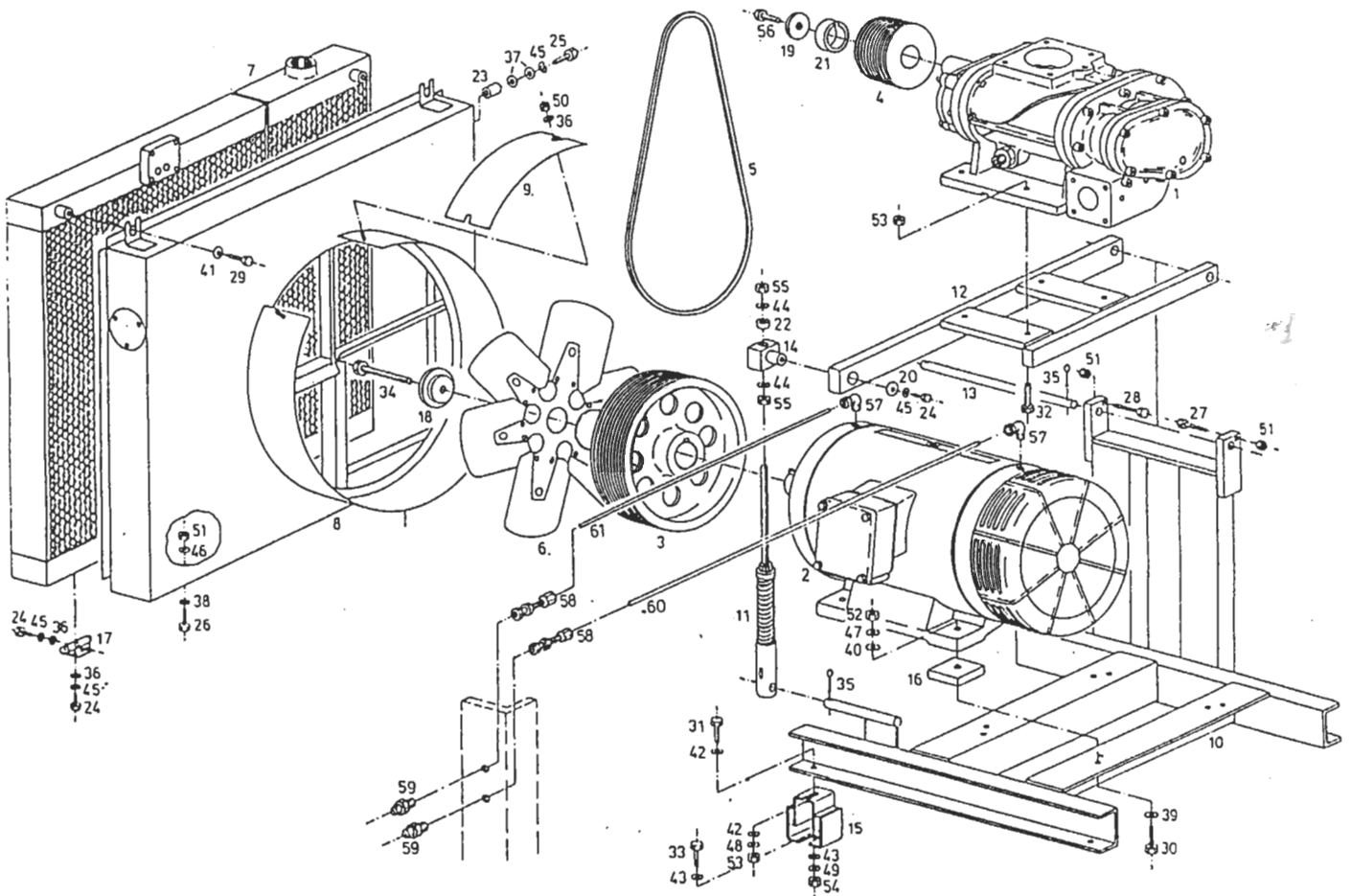


Ref.	Qty	Part No.	Description
1	1	4.9320.0	Frame
1) 2	1	7.2305.3	Controller
2) 2	1	7.2306.3	Controller
3	1	4.7026.3	Casing complete with 3a
3a	1	6.1939.0	Quick-change frame
4	1	4.7019.1	Casing
5	1	4.8324.0	Casing
6	1	4.8225.0	Casing
7	1	4.7071.1	Door
8	1	4.7072.1	Door
9	1	4.8323.0	Door
10	1	4.7070.1	Cover sheet
11	1	4.8305.0	Cover plate
12	1	4.7349.0	Filter mat
13	1	4.7347.0	Filter mat
14	1	6.1938.0	Filter mat
15	1	4.7348.0	Covering grating
16	1	4.7346.0	Covering grating
17	4	6.1347.0	Anti-vibration pads dia. 3 15/18x3 15/18"
18	2	5.1331.0	Gas spring
19	1	5.1398.0	Gasket profile 185"
20	1	5.1408.0	Froth rubber band 13"
21	4	5.1330.0	Split pin
22	1	6.2344.0	Stud M 10 x 35
23	49	6.0916.0	Phillips head screw M 5 x 10
24	2	6.0901.0	Phillips head screw M 5 x 15
25	3	6.0986.0	Sheet metal screw 3,5 x 9,5
26	4	6.0726.0	Hex. hd. screw M 8 x 20
27	4	6.2203.0	Hex. hd. screw M 16 x 20
28	2	6.0622.0	Washer
29	12	6.0623.0	Washer
30	4	6.0627.0	Washer

Ref.	Qty	Part No.	Description
31	4	6.0653.0	Spring washer
32	2	6.0660.0	Toothed lock washer
33	2	6.0681.0	Hex. nut M 5
34	2	6.0682.0	Hex. nut M 6
35	4	6.0684.0	Hex. nut M 8

1) Compressor Unit BS 50
2) Compressor Unit BS 60

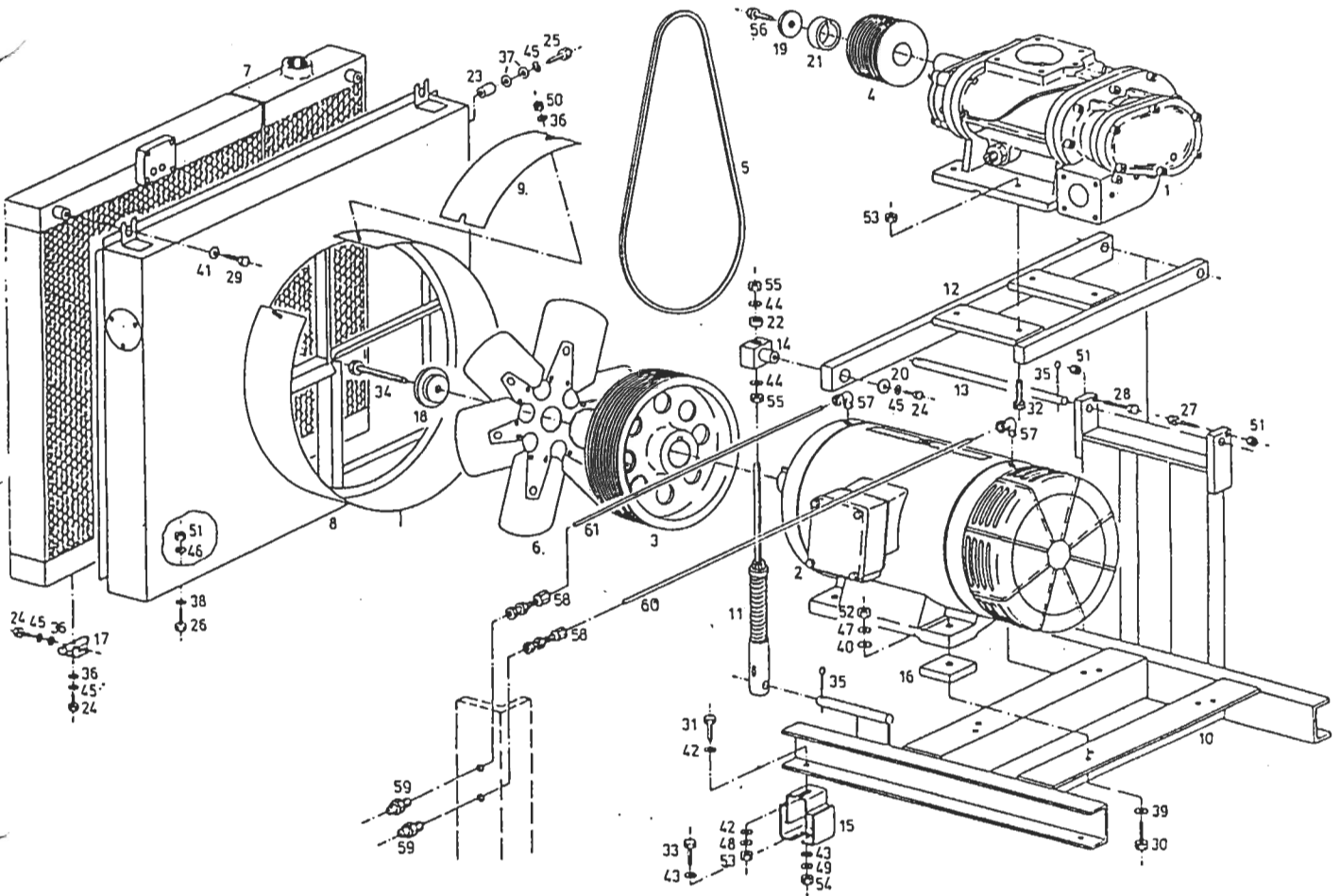
Driving system
BS 50/60 type



Ref.	Qty.	Part No.	Description
1	1	1.3851.4	Screw compressor Sigma 2
1-3	2	7.0908.1	Motor 3-phase 30 kW, 230/460V
4-6	2	7.0909.1	Motor 3-phase 37 kW, 230/460V
1-3	3	4.7283.1	Motor pulley dia. 12 19/32
4-6	3	4.7284.1	Motor pulley dia. 12 19/32
1)	4	4.4287.0	Compressor pulley
2)	4	4.4288.0	Compressor pulley
3)	4	4.4289.0	Compressor pulley
4)	4	4.7276.1	Compressor pulley
5)	4	4.4290.0	Compressor pulley
6)	4	4.4291.0	Compressor pulley
1)	5	6.1434.0	Set of v-belts
2)	5	6.2533.0	Set of v-belts
3)	5	6.2541.0	Set of v-belts
4)	5	6.2532.0	Set of v-belts
5)	5	6.2532.0	Set of v-belts
6)	5	6.1434.0	Set of v-belts
6	1	5.0684.0	Fan wheel
7	1	5.1074.30010	Cooler
8	1	4.8328.0	Fan case
9	1	2.2683.0	Cover plate
10	1	4.8327.1	Swing frame
11	1	4.7566.1	Balance adjustment
12	1	4.8326.0	Whip
13	1	4.7572.1	Shaft
14	1	4.8322.0	Pivot bearing
15	4	6.1329.0	Base of the machine
1-3)	4	4.7593.0	Steel plate
17	2	4.7428.0	Hinge
18	1	4.7588.1	Centering disk
19	1	4.7179.0	Disk
20	1	5.0428.0	Disk

Ref.	Qty.	Part No.	Description	
21	1	4.7207.1	Intermediate ring	
22	1	6.2369.0	Intermediate ring	
23	1	4.8321.0	Distance washer	
24	9	6.0725.0	Hex.-head screw M 8 x 15	
25	1	6.0730.0	Hex.-head screw M 8 x 40	
26	2	6.0763.0	Hex.-head screw M 10 x 30	
27	1	6.0772.0	Hex.-head screw M 10 x 55	
28	1	6.0798.0	Hex.-head screw M 10 x 70	
29	2	6.2215.0	Hex.-head screw M 12 x 25	
1-3)	4	6.0799.0	Hex.-head screw M 12 x 75	
4-6)	4	6.0819.0	Hex.-head screw M 16 x 60	
31	4	6.2210.0	Hex.-head screw M 14 x 40	
32	4	6.2200.0	Hex.-head screw M 14 x 60	
33	4	6.0813.0	Hex.-head screw M 16 x 40	
1-3)	4	6.0795.0	Hex.-head screw M 20 x 100	
4-6)	4	6.0777.0	Hex.-head screw M 20 x 65	
35	3	6.0617.0	Split pin	
36	10	6.0623.0	Washer	
37	2	6.0631.0	Washer	
38	2	6.0624.0	Washer	
1-3)	39	4	6.0625.0	Washer
4-6)	39	4	6.0627.0	Washer
1-3)	40	4	6.0633.0	Washer
4-6)	40	4	6.2376.0	Washer
41	2	6.0633.0	Washer	
42	8	6.0626.0	Washer	
43	8	6.0627.0	Washer	
44	2	6.0629.0	Washer	
45	10	6.0653.0	Spring washer	
46	2	6.0654.0	Spring washer	
1-3)	47	4	6.0655.0	Spring washer
4-6)	47	4	6.0637.0	Spring washer
48	4	6.0656.0	Spring washer	
49	4	6.0657.0	Spring washer	
50	2	6.0684.0	Hex.nut M 8	

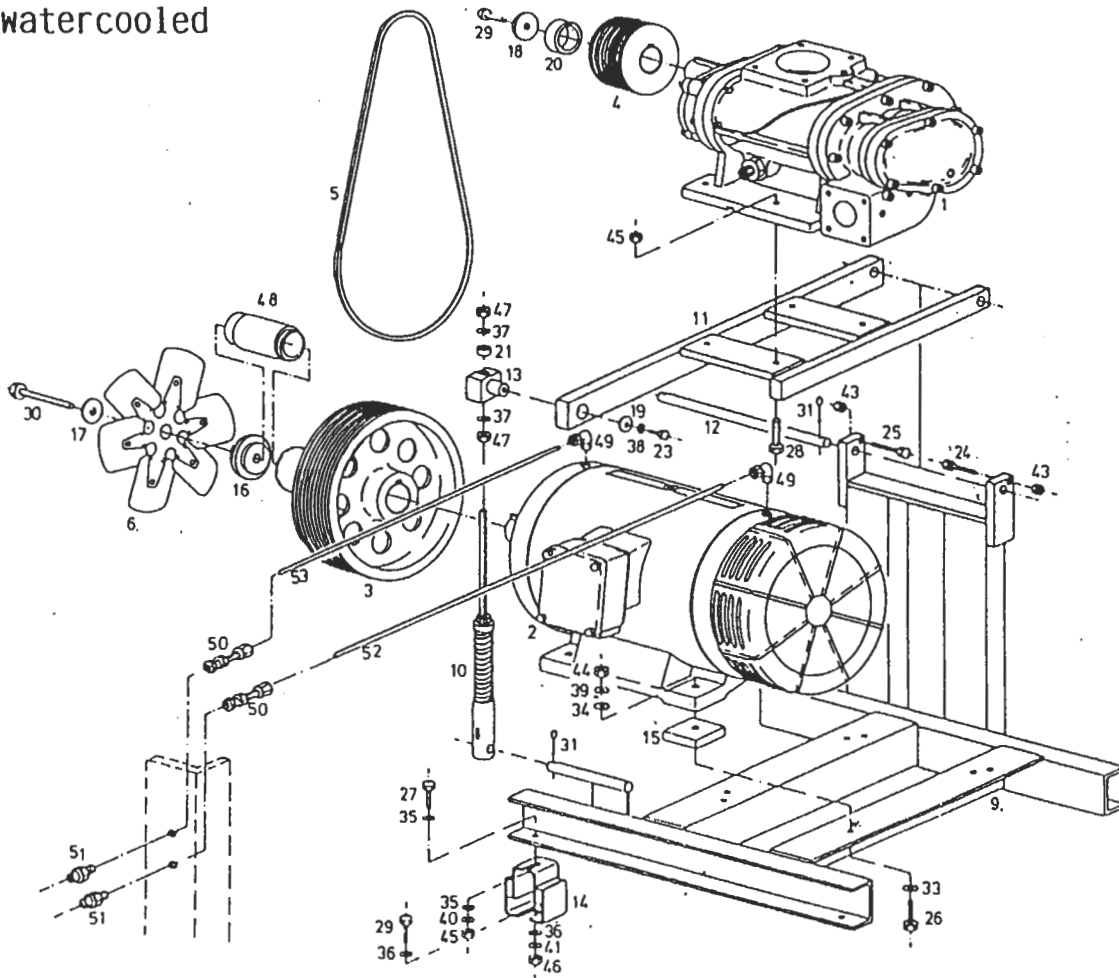
Driving system BS 50/60 type



Ref.	Qty.	Part No.	Description
51	4	6.0685.0	Hex.nut M 10
1-3) 52	4	6.0686.0	Hex.nut M 12
4-6) 52	4	6.0688.0	Hex.nut M 16
53	8	6.0687.0	Hex.nut M 14
54	4	6.0688.0	Hex.nut M 16
55	2	6.0693.0	Hex.nut M 20
56	1	4.4395.0	Hex.-head screw M 20 x 2 x 65
57	2	6.0266.0	Anlge fitting WE 1/8
58	2	2.9136.0	Bulkhead fitting
59	2	2.9137.0	Lubricating nipple
60	1	9.0616.0	Tecalan line dia. 6
61	1	9.0616.0	Tecalan line dia. 6

1) Unit BS 50/110 psig
 2) Unit BS 50/145 psig
 3) Unit BS 50/190 psig
 4) Unit BS 60/110 psig
 5) Unit BS 60/145 psig
 6) Unit BS 60/190 psig

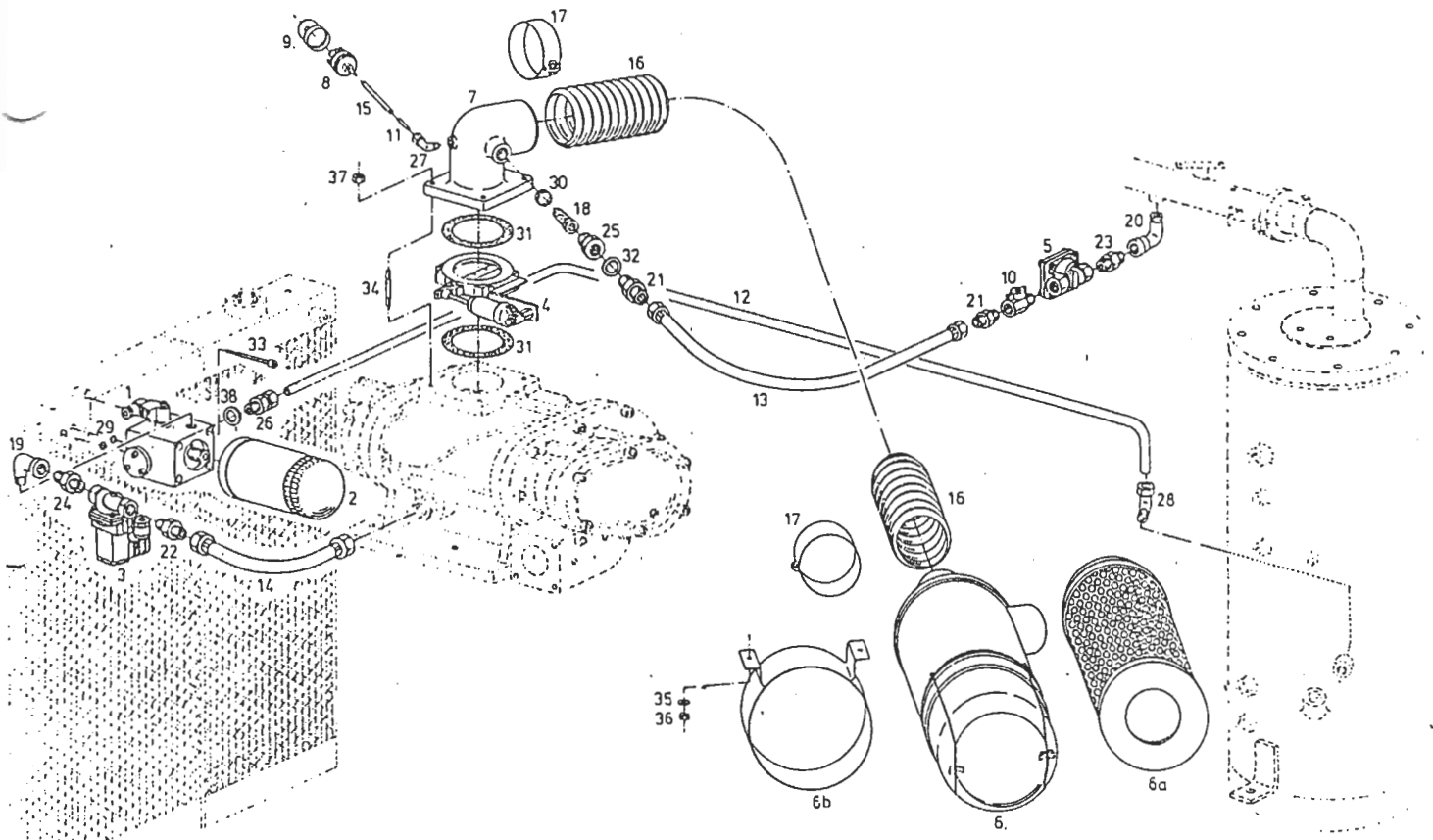
Driving system
BS 50/60 tube
watercooled



Ref.	Qty.	Part No.	Description
51	2	2.9137.0	Lubricating nipple M 8
52	1	9.0616.0	Tecalan line dia. 1/4
53	1	9.0616.0	Tecalan line dia. 1/4
			1) Compressor Unit BS 50, 110 psi
			2) Compressor Unit BS 50, 145 psi
			3) Compressor Unit BS 50, 190 psi
			4) Compressor Unit BS 60, 110 psi
			5) Compressor Unit BS 60, 145 psi
			6) Compressor Unit BS 60, 190 psi

B21

Oil tubes, Vent lines
BS 50, BS 60 type



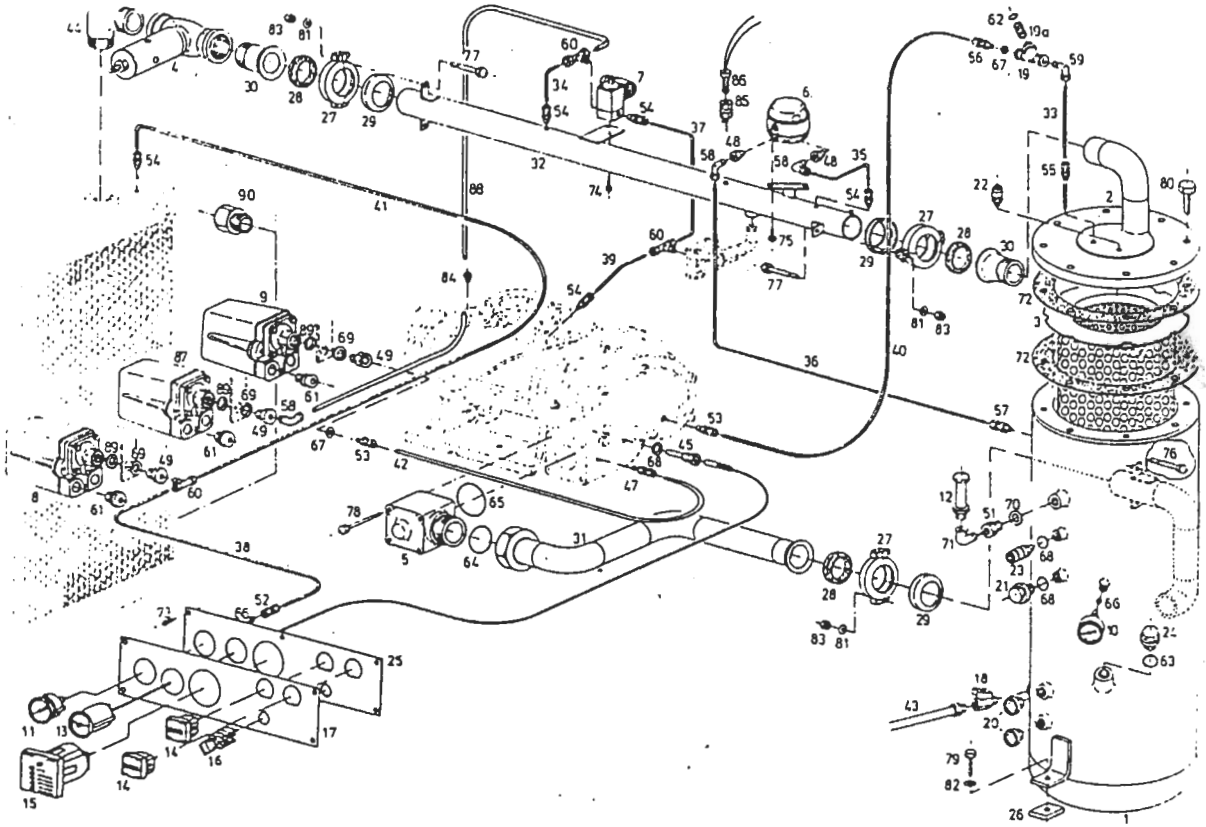
Ref.	Qty.	Part No.	Description
1	1	4.8870.1	Combination valve
2	1	6.1981.0	Filter cartridge
3	1	2.0704.0	Oil stop valve compl. pasted with Pos. 27 and 24
4	1	4.7387.1	Inlet valve
5	1	4.1128.0	Vent valve compl. pasted with Pos. 10 and 21
6	1	6.1917.0	Air filter complete
6a	1	6.1996.0	Filter cartridge
6b	1	6.1920.0	Support for air filter
7	1	4.7324.2	Flange
8	1	7.0294.0	Vacuum switch (-19 11/16" wg)
9	1	7.0298.0	Protecting cap
10	1	8.0259.0	Ball cock R 1/2"
11	1	4.1850.0	Copper tube
12	1	4.8307.1	Tube
13	1	8.0864.1	Hose line R 1/2"x19 11/16"
14	1	8.1183.0	Hose line R 3/4"x22"
15	1		Hose line R 1/8"x1 49/64"
16	1	9.1078.00010	Hose R 3"x25 25/64"
17	2	9.0659.0	Hose clip
18	1	6.1969.0	Silencer
19	1	6.1113.0	Angle R 3/4"
20	1	6.1062.0	Elbow R 1/2"
21	2	5.0784.0	Double nipple R 1/2"
22	1	5.0785.0	Double nipple R 3/4"
23	1	6.1030.1	Fitting R 1/2"
24	1	6.1033.0	Fitting R 3/4"
25	1	5.0925.0	Reducing socket R 3/4"xR 1/2"
26	1	6.0274.0	Pipe fitting R 3/4"
27	1	6.0251.0	Angle fitting R 1/8"
1) 28	1	6.0259.0	Angle fitting R 3/4"
2) 28	1	2.9899.0	Angle fitting R 3/4"

Ref.	Qty.	Part No.	Description
29	2	5.1423.0	O-ring dia. 19 x 3
30	1	5.0582.0	Rubber sleeve
31	2	5.0567.1	Gasket for inlet valve
32	1	6.1524.0	Gasket R 1/2"
33	4	6.2411.0	Cylinder screw with inside hex. M 6 x 100
34	4	6.0873.0	Stud M 10 x 70
35	2	6.0631.0	Washer
36	2	6.0684.0	Hex. nut M 8
37	4	6.0685.0	Hex. nut M 10
38	1	6.1527.0	Gasket R 3/4"

1) Unit BS 110 psig
2) Unit BS 145 psig
2) Unit BS 190 psig

C21

Control tubes
Compressed air tubes
BS 50/60 type

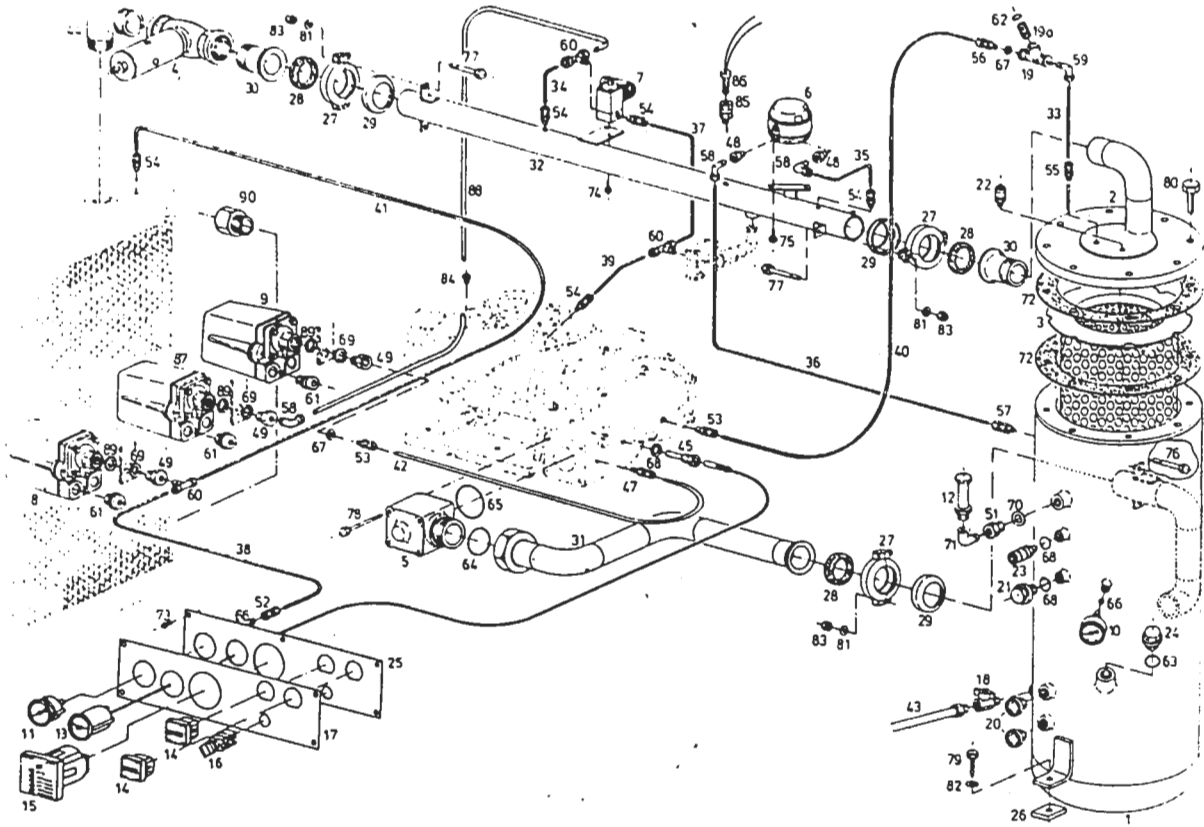


Ref.	Qty.	Part No.	Description
1	1	3.6114.0	Tank 13 gal.
2	1	4.7238.2	Cover
3	1	6.1960.0	Oil separator cartridge
4	1	4.7342.0	Minimum pressure check valve G 1 1/2
5	1	4.7393.2	Check valve complete
6	1	7.0217.0	Difference pressure switch
7	1	2.0712.1	Control valve compl. pasted with Pos. 54 and 60
8	1	7.0220.0	Pressure switch 115 psig
8	1	7.0221.0	Pressure switch 230 psig
8	1	7.0221.0	Pressure switch 230 psig
9	1	7.0219.0	Pressure switch
10	1	8.0018.0	Pressure gauge 0-360/220 psig
11	1	8.0137.0	Pressure gauge 0-145/110 psig
11	1	8.0136.0	Pressure gauge 0-230/145 psig
11	1	8.0138.0	Pressure gauge 0-230/190 psig
12	1	8.2056.0	Safety valve 1/2 NPT 130 psig
12	1	8.2067.0	Safety valve 1/2 NPT 165 psig
12	1	8.2071.0	Safety valve 1/4 NPT 210 psig
12	1	8.2072.0	Safety valve 1/2 NPT 210 psig
13	1	8.0197.0	Distance thermometer
14	2	7.0784.0	Hour meter
15	1	7.2766.00020	Malfunction relay
16	1	7.2778.1	Control switch
17	1	5.2298.00030	Foil label
18	1	8.0259.0	Ball cock G 1/2
19	1	8.0381.0	Dirt trap G 1/4
19a	1	8.0394.0	Dirt trap strainer
20	2	6.0105.0	Oil sight glass G 3/4
21	1	6.0501.0	Locking screw G 3/8
22	1	9.0843.0	Hose coupling G 1/4
23	1	9.0844.0	Hose coupling G 3/8
24	1	6.0519.0	Locking screw G 1 1/4

D23

Ref.	Qty.	Part No.	Description
25	1	4.7454.2	Instrument panel
26	2	4.8435.0	Steel plate
27	3	5.1125.0	Tension clamp complete
28	3	5.1391.0	Gasket ring
29	3	5.1122.0	Support for gasket ring
30	2	4.8268.0	Sleeve
31	1	4.4341.0	Air tube
32	1	4.8470.0	Air tube
33	1	4.8317.0	Suction tube
34	1		Control tube 1/4" x 8 5/8"
35	1		Control tube 1/4" x 14 1/2"
36	1		Control tube 1/4" x 14 1/2"
37	1		Control tube 1/4" x 14 1/2"
38	1		Control tube 1/4" x 14 3/16"
39	1		Control tube 1/4" x 15 3/4"
40	1		Control tube 1/4" x 19 3/4"
41	1		Control tube 1/4" x 43 5/16"
42	1		Control tube 1/4" x 28 3/8"
43	1	8.0581.0	Hose line G 1/2 x 59"
44	1	6.1098.0	Angle G 1 1/2
45	1	5.0929.0	Protection sleeve G 3/8
46			
47	1	6.1716.0	Pipe fitting M 12 x 1.5
48	2	5.0820.0	Reducing socket G 1/4 x G 1/8
49	3	5.0846.0	Reducing socket G 1/2 x G 1/8
50			
51	1	6.3201.0	Reducing socket G 1/2 x G 1/4
52	1	6.0390.0	Pipe fitting G 1/4
53	1	6.0231.0	Pipe fitting G 1/8
54	5	6.0246.0	Pipe fitting G 1/8
55	1	4.8199.0	Pipe fitting G 1/4
56	1	4.8335.0	Pipe fitting G 1/4
57	1	6.0229.0	Pipe fitting G 1/4
58	3	6.0266.0	Angle fitting G 1/8

Control tubes
Compressed air tubes
BS 50/60 type

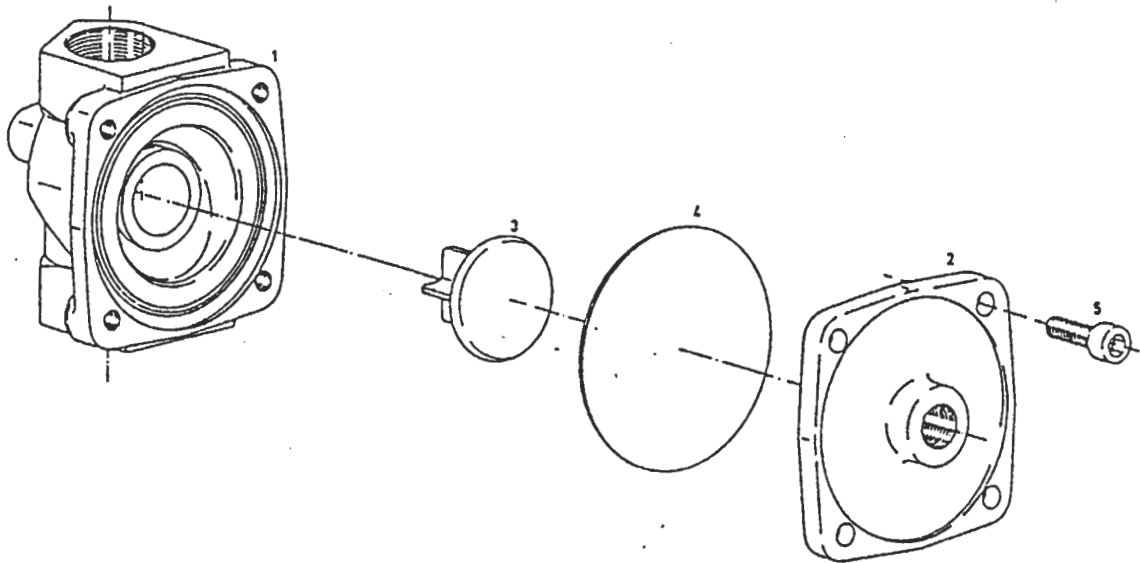


Ref.	Qty.	Part No.	Description
59	1	6.0254.0	Angle fitting G 1/4
60	3	6.0344.0	T pipe fitting G 1/8
61	3	7.0673.0	Plug PG 16
62	1	5.1443.0	O-ring dia. 20 x 2.5
63	1	5.1455.0	O-ring dia. 47 x 2
64	1	5.1422.0	O-ring dia. 56 x 3
65	1	5.1462.0	O-ring dia. 80 x 2
66	2	6.0470.0	Gasket for pressure gauge G 1/4
67	2	6.0432.0	Gasket G 1/4
68	3	6.1521.0	Gasket G 3/8
69	3	6.1525.0	Gasket G 1/2
70	1	6.1524.0	Gasket G 1/2
71	1	6.3208.0	Angle 1/2 NPT
71	1	6.3231.0	Angle 1/4 NPT
72	2	5.0556.0	Gasket for tank
73	6	6.0914.0	Phillips head screw M 4 x 10
74	2	6.0860.0	Fillister head screw M 4 x 8
75	2	6.0746.0	Hex. hd. screw M 6 x 10
76	2	6.2214.0	Hex. hd. screw M 8 x 50
77	4	6.0733.0	Hex. hd. screw M 8 x 60
78	4	6.0780.0	Hex. hd. screw M 10 x 110
79	2	6.0821.0	Hex. hd. screw M 10 x 40
80	8	6.0759.0	Hex. hd. screw M 16 x 45
81	6	6.2374.0	Washer
82	2	6.2373.0	Washer
83	6	6.2431.0	Hex. nut M 8
84	1	6.2604.0	Plug G 1/8
85	1	7.2712.0	Internal thermal overload
86	1	6.0242.0	Pipe fitting R 1/8
87	1	7.0218.0	Pressure switch
88	1		Control tube 1/4" x 17 1/4"
89	3	6.0439.0	Gasket G 1/2
90	1	4.4446.0	Adapter G 1 1/2 x 1 1/2 NPT

Ref.	Qty.	Part No.	Description
			1. Compressor unit BS 50 110 psig
			2. Compressor unit BS 50 145 psig
			3. Compressor unit BS 50 190 psig
			4. Compressor unit BS 60 110 psig
			5. Compressor unit BS 60 145 psig
			6. Compressor unit BS 60 190 psig

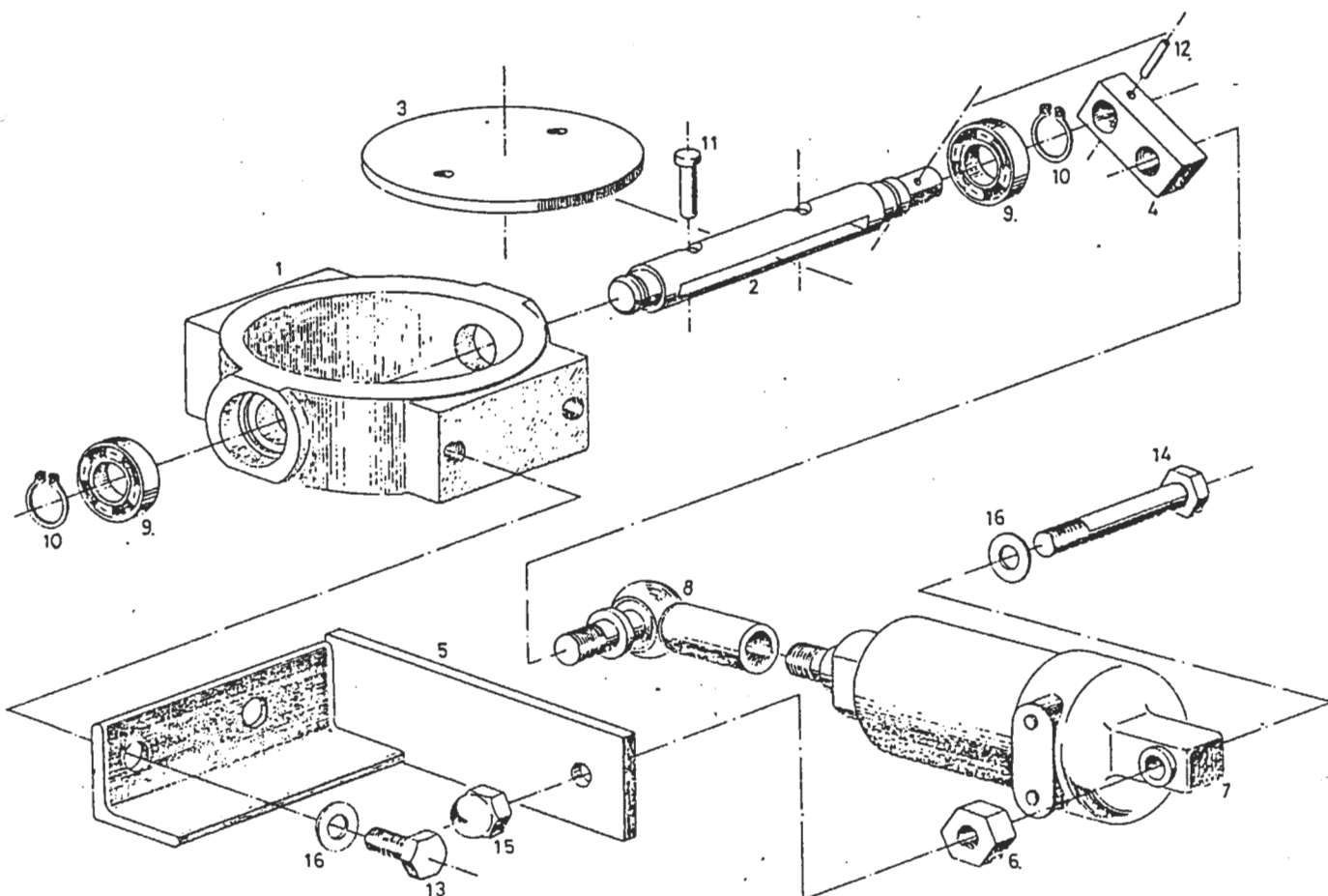
Vent valve
2.1128.0

KAESER
COMPRESSORS



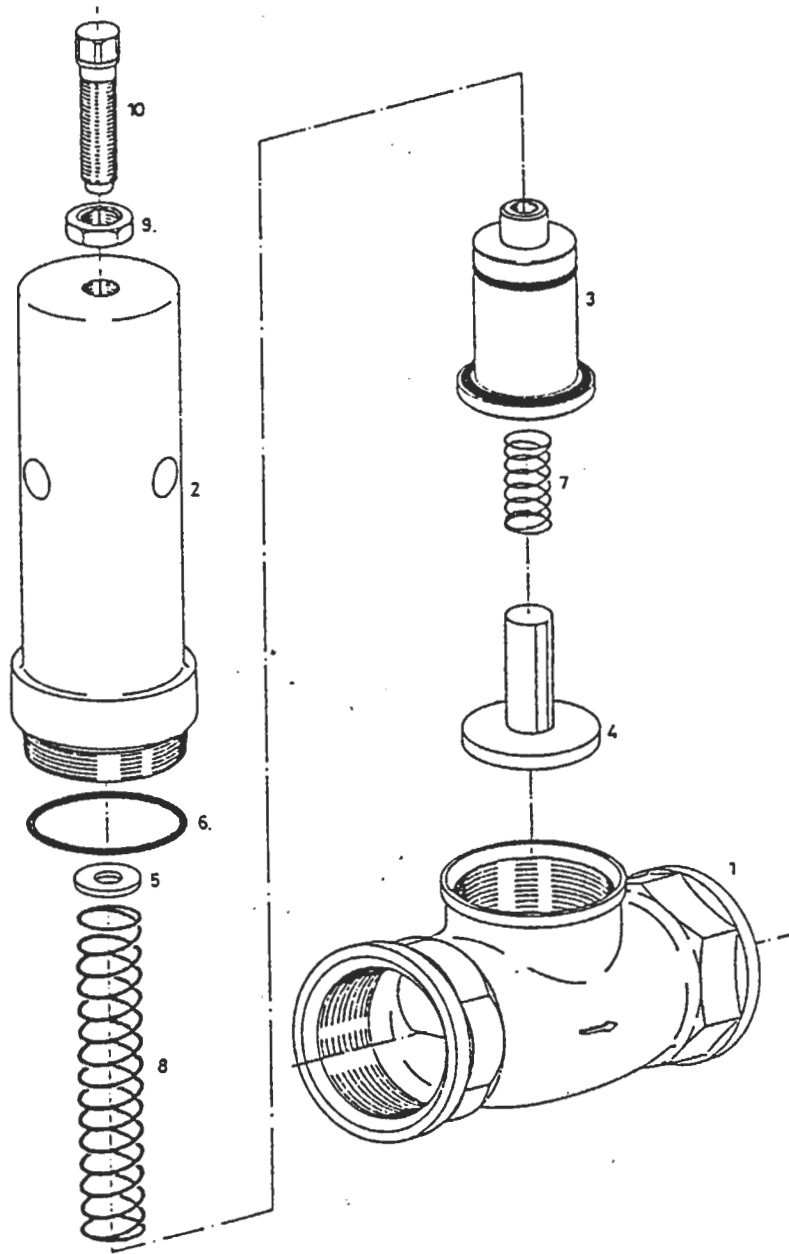
Ref.	Qty.	Part No.	Description
1	1	5.0989.0	Valve body
2	1	5.0997.0	Cover
3	1	4.9026.0	Piston complete
4	1	5.0999.0	Diaphragm
5	4	6.2408.0	Cylinder screw with inside hex. M 5 x 12

Inlet valve
4.7387.1



Ref.	Qty	Part No.	Description
1	1	4.8930.2	Valve body
2	1	4.8963.0	Shaft
3	1	4.8932.0	Disk
4	1	4.8964.0	Lever
5	1	4.8961.1	Support
6	1	4.8965.0	Hex. nut
7	1	7.0486.0	Working cylinder
8	1	7.0489.0	Angle joint
9	2	6.0033.0	Ball bearing
10	2	6.0541.0	Guard ring
11	1	4.7564.0	Rivet with button head
12	1	6.0609.0	Clamping sleeve
13	2	6.0720.0	Hex. hd. screw M 6 x 15
14	1	6.0723.0	Hex. hd. screw M 6 x 45
15	1	6.0701.0	Cap nut M 6
16	3	6.0622.0	Washer

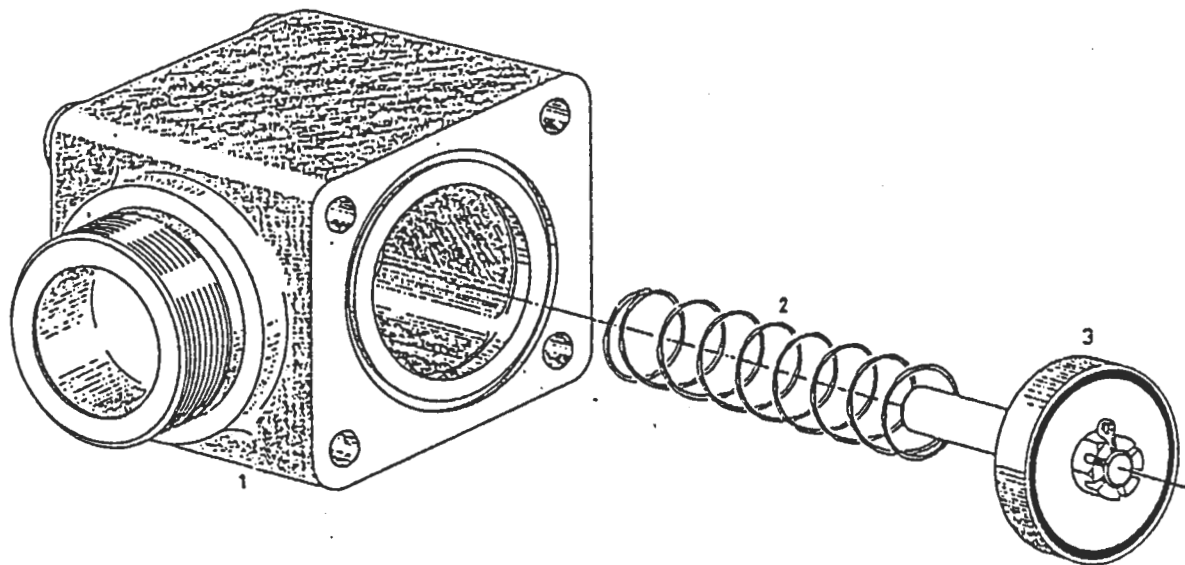
Minimum pressure
check valve
4.7342.0



Ref.	Qty	Part No.	Description
1	1	4.8575.0	Valve body G 1-1/2
2	1	4.8576.0	Cylinder
3	1	4.9021.0	Piston complete
4	1	4.9015.0	Valve disk complete
5	1	6.2371.0	Disk
6	1	5.1470.0	O-ring dia. 45 x 3
7	1	5.0643.0	Compression spring
8	1	5.0645.0	Compression spring
9	1	6.0686.0	Hex. nut M 12
10	1	6.0945.0	Square head bolt M 12 x 40

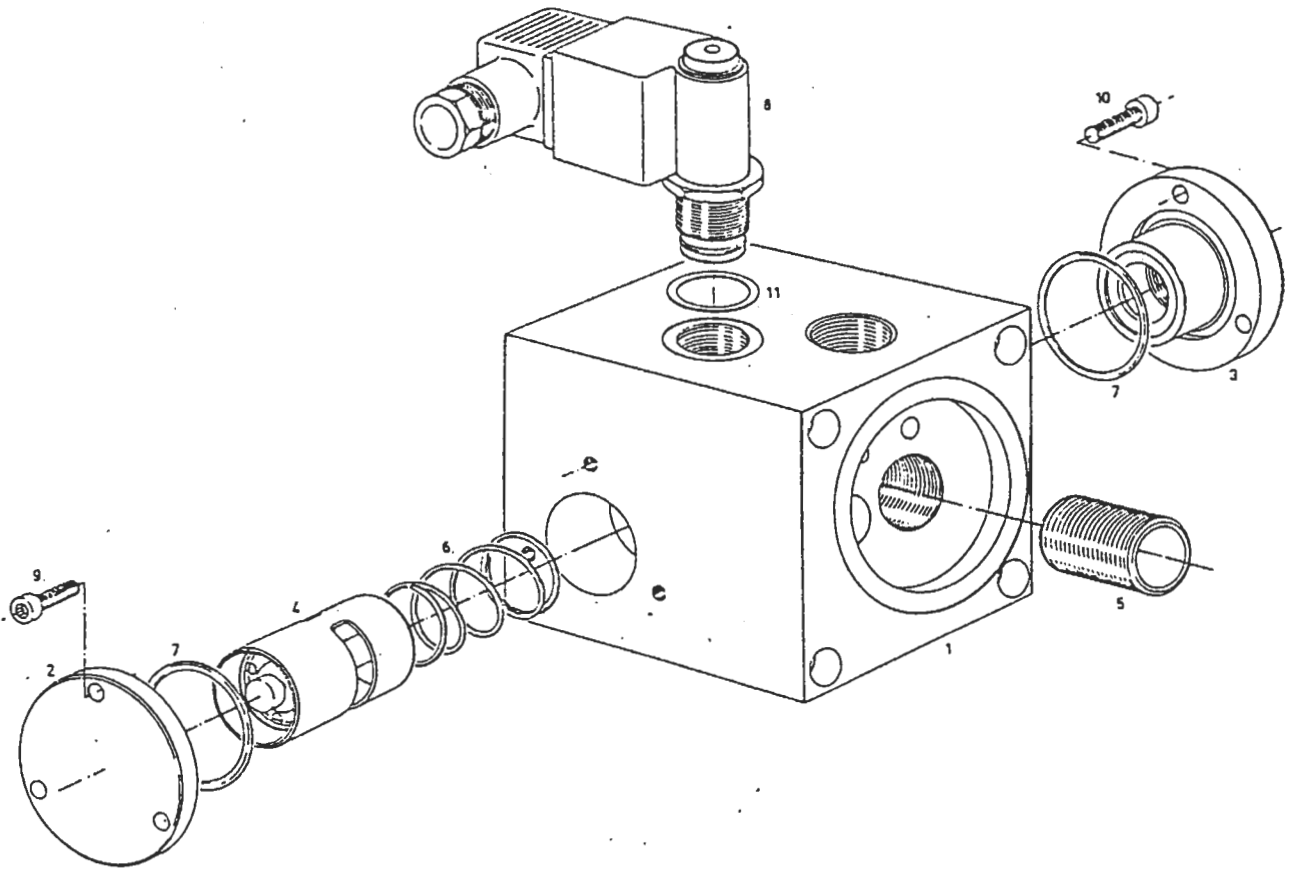
Check valve
4.7393.2

KAESER
KOMPRESSOREN



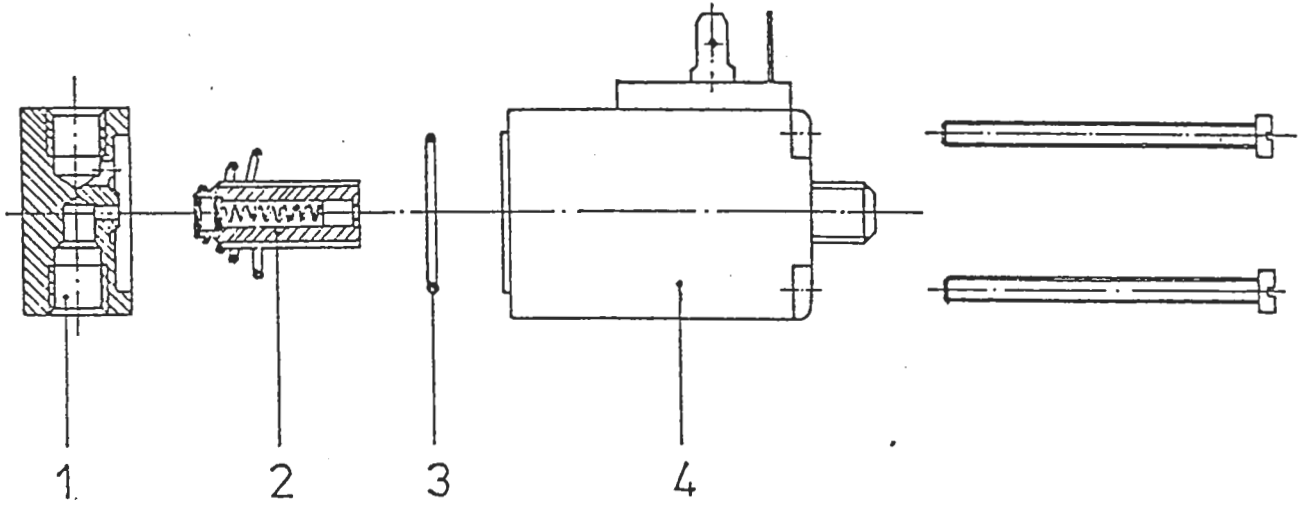
Ref.	Qty	Part No.	Description
1	1	4.8910.2	Valve body
2	1	5.0617.1	Compression spring
3	1	4.9011.1	Valve disk complete
3	1	4.8916.1	Guide bolt

Combination valve
4.8870.1



Ref.	Qty	Part No.	Description
1	1	4.8872.1	Valve body
2	1	4.8875.0	Cover
3	1	4.8873.0	Cover
4	1	7.0399.0	Actuating piston with working element
5	1	4.8874.1	Thread nipple
6	1	5.0636.0	Compression spring
7	2	5.1445.0	O-ring dia. 35 x 2
8	1	7.1407.0	Difference pressure switch
9	3	6.2406.0	Cylinder screw with inside hex. M 5 x 16
10	3	6.2400.0	Cylinder screw with inside hex. M 5 x 20
11	1	6.1534.0	Gasket dia. 25/32" x dia. 15/16" x 1/16"

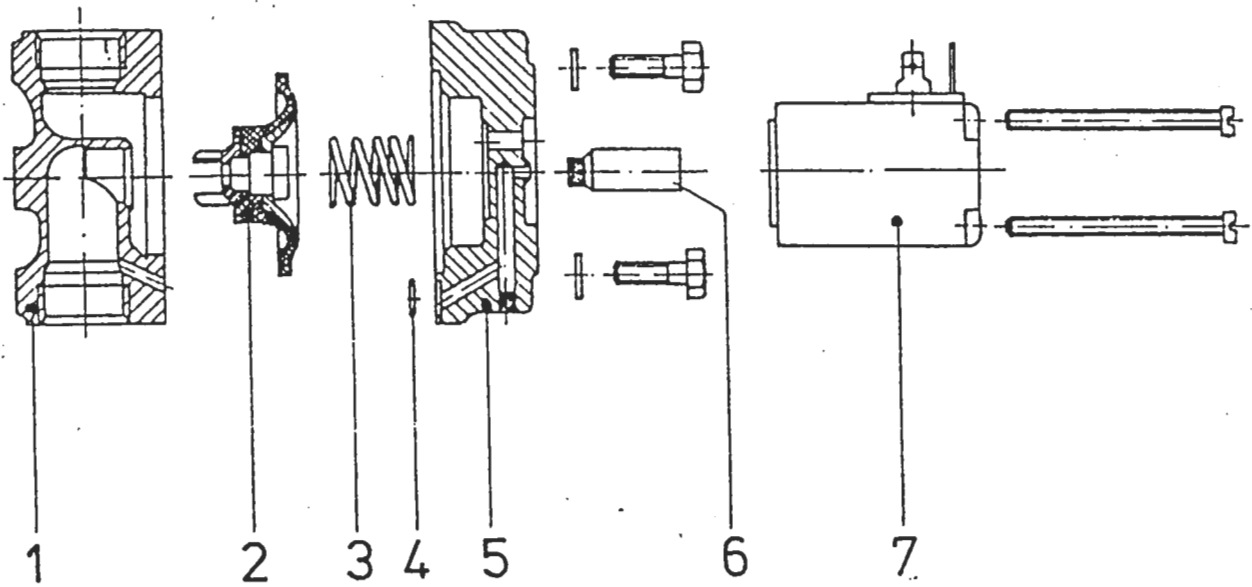
Control valve
2.0712.1



Ref.	Qty	Part No.	Description
1			Casing
2		7.0387.0	Armature
3		7.0344.0	O-ring 25 x 1,5 Vitor
4		7.1372.0	Coil

Oil stop valve
2.0704.0

KAESER
COMPRESSORS



Ref.	Qty.	Part No.	Description
1			Bottom of casing compl. pasted with fitting
2		7.0347.0	Diaphragm complete
3		7.0378.0	Closing spring
4		7.0345.0	O-Ring 6 x 1,5 Viton
5			Top of casing
6		7.0343.0	Core
7		7.1958.0	Coil complete

RECOMMENDED SPARE PARTS LIST



BS 50/60

Section 1

1

DESCRIPTION	Part No.	Qty per unit	LOCATION		Recommended Quantities		
			Section	Ref.	A	B	C
Oil filter cartridge	6.1981.0	1	Oil tubes, Vent lines	2	1	2	3
Oil separator cartridge complete set consists of:	6.2012.0						
- Oil separator cartridge	6.1960.0	1	Control tubes, compressed air tubes	3			
- Gasket for tank	5.0556.0	2	Control tubes, compressed air tubes	72			
- O-Ring dia. 20x2,5	5.1443.0	1	Control tubes, compressed air tubes	62			
- Dirt trap strainer	8.0394.0	1	Control tubes, compressed air tubes	19a			
V-belt set BS 50/110 psig	6.1434.0	1	Driving system	5	1	1	2
V-belt set BS 50/145 psig	6.2533.0	1	Driving system	5	1	1	2
V-belt set BS 50/190 psig	6.2541.0	1	Driving system	5	1	1	2
V-belt set BS 60/110 psig	6.2532.0	1	Driving system	5	1	1	2
V-belt set BS 60/145 psig	6.2532.0	1	Driving system	5	1	1	2
V-belt set BS 60/190 psig	6.1434.0	1	Driving system	5	1	1	2
O-Ring dia. 15,5 x 2,5	5.1473.0	1	Vent valve	3b	1	1	2
O-Ring dia. 19 x 3	5.1423.0	2	Oil tubes, Vent lines	29	1	1	2
O-Ring dia. 35 x 2	5.1445.0	2	Combination valve	7	1	1	2
O-Ring dia. 45 x 3	5.1470.0	1	Minimum pressure check valve	6	1	1	2
O-Ring dia. 47 x 2	5.1455.0	1	Control tubes, compressed air tubes	63	1	1	2
O-Ring dia. 56 x 3	5.1422.0	1	Control tubes, compressed air tubes	64	1	1	2
O-Ring dia. 80 x 2	5.1462.0	1	Control tubes, compressed air tubes	65	1	1	2
Gasket G 1/4	6.0470.0	2	Control tubes, compressed air tubes	66	1	1	2
Gasket G 1/4	6.0432.0	2	Control tubes, compressed air tubes	67	1	1	2
Gasket G 3/8	6.1521.0	3	Control tubes, compressed air tubes	68	1	1	2
Gasket G 1/2	6.0438.0	2	Control tubes, compressed air tubes	69	1	1	2
Gasket G 1/2	6.1524.0	1	Control tubes, compressed air tubes	70	1	1	2
Gasket G 1/2	6.1524.0	1	Oil tubes, Vent lines	32	1	1	2
Gasket G 3/4	6.1527.0	1	Oil tubes, Vent lines	38	1	1	2
Gasket G 3/4	6.1527.0	1	Control tubes, compressed air tubes	71	1	1	2
Gasket for inlet valve	5.0567.1	2	Oil tubes, Vent lines	31	1	1	2
Gasket ring	5.1391.0	3	Control tubes, compressed air tubes	28	1	1	2
Diaphragm	5.0999.0	1	Vent valve	4	1	1	2
Diaphragm complete	7.0347.0	1	Oil stop valve	2	1	1	2

RECOMMENDED SPARE PARTS LIST



BS 50/60

Section 2

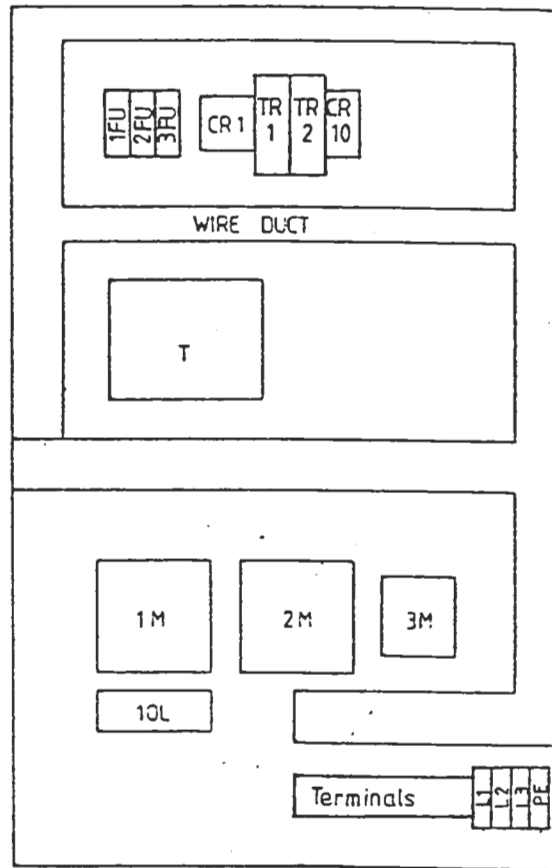
2

DESCRIPTION	Part No.	Qty per unit	LOCATION		Recommended Quantities		
			Section	Ref.	A	B	C
Piston complete	4.9026.0	1	Vent valve	3	1	1	2
Piston complete	4.9021.0	1	Minimum pressure check valve	3	1	1	2
Safety pressure switch	7.0219.0	1	Control tubes, compressed air tubes	9	0	1	1
Pressure switch 115 psig	7.0220.0	1	Control tubes, compressed air tubes	8	0	1	1
Pressure switch 230 psig	7.0221.0	1	Control tubes, compressed air tubes	8	0	1	1
Valve disk complete	4.9015.0	1	Minimum pressure check valve	4	1	1	2
Valve disk complete	4.9011.1	1	Check valve	3	1	1	2
Compression spring	5.0643.0	1	Minimum pressure check valve	7	0	1	1
Compression spring	5.0645.0	1	Minimum pressure check valve	8	0	1	1
Compression spring	5.0617.1	1	Check valve	2	0	1	1
Compression spring	5.0636.0	1	Combination valve	6	0	1	1
Working element	7.0399.0	1	Combination valve	4	1	1	2
Vent valve	2.1128.0	1	Oil tubes, vent lines	5	0	0	1
Inlet valve	4.7387.1	1	Oil tubes, vent lines	4	0	0	1
Minimum pressure check valve	4.7342.0	1	Control tubes, Compressed air tubes	4	0	0	1
Check valve	4.7393.2	1	Control tubes, compressed air tubes	5	0	0	1
Control valve	2.0712.0	1	Control tubes, compressed air tubes	7	0	0	1
Oil stop valve	2.0704.0	1	Oil tubes, vent lines	3	0	0	1

RECOMMENDED SPARE PARTS LIST FOR
ELECTRICAL EQUIPMENT

Model BS 44/50

460 V WYE-Delta start



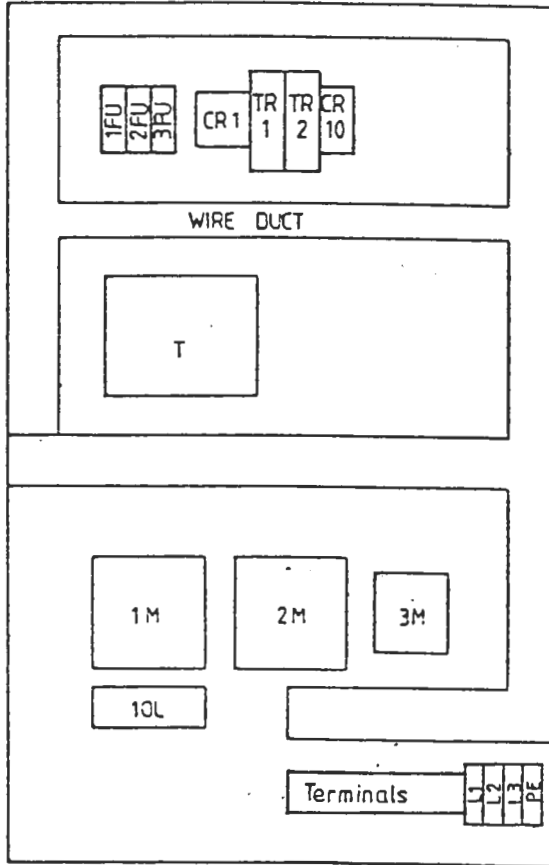
DESCRIPTION		Part No.	Qty-per unit	LOCATION USE	Recommended Quantities		
					A	B	C
1M	Motor starter (main contactor)	7.3405.0	1	Control box	0	1	1
2M	Motor starter (Delta contactor)	7.3405.0	1	Control box	0	1	1
3M	Motor starter (WYE contactor)	7.3403.0	1	Control box	0	1	1
1FU	Fuse	7.3301.0	1	Control box	0	1	1
2,3FU	Fuse	7.3311.0	2	Control box	0	1	1
T	Transformer	7.2221.0	1	Control box	0	1	1
CR1	Control relay	7.2066.0	1	Control box	0	1	1
TR1	Time delay relay	7.0467.0	1	Control box	0	1	1
CR 10	Thermal overload	7.2710.1	1	Control box	0	1	1
TR2	Time delay relay (WYE time)	7.0466.0	1	Control box	1	1	2
10L	Overload relay for motor	7.3458.0	1	Control box	0	1	1

501... 3

**RECOMMENDED SPARE PARTS LIST FOR
ELECTRICAL EQUIPMENT**

Model BS 60

460 V WYE-Delta start



DESCRIPTION		Part No.	Qty-per unit	LOCATION USE	Recommended Quantities		
					A	B	C
1M	Motor starter (main contactor)	7.3406.0	1	Control box	0	1	1
2M	Motor starter (Delta contactor)	7.3406.0	1	Control box	0	1	1
3M	Motor starter (WYE contactor)	7.3404.0	1	Control box	0	1	1
1FU	Fuse	7.3301.0	1	Control box	0	1	1
2,3FU	Fuse	7.3311.0	2	Control box	0	1	1
T	Transformer	7.2221.0	1	Control box	0	1	1
CR1	Control relay	7.2066.0	1	Control box	0	1	1
TR1	Time delay relay	7.0467.0	1	Control box	0	1	1
CR 10	Thermal overload	7.2710.1	1	Control box	0	1	1
TR2	Time delay relay (WYE time)	7.0466.0	1	Control box	1	1	2
10L	Overload relay for motor	7.3459.0	1	Control box	0	1	1

501.215.3