

CS 76
CS 91

A 2
B 1
C 1
D 2/1

KAESER COMPRESSORS, Inc.

4950 Quality Drive • P.O. Box 946 • Fredericksburg, Virginia 22404

SECTION 1

INTRODUCTION

1. FOREWORD

This manual is provided for the operator's use and reference when ordering parts. An illustrated parts breakdown is included for identification. All compressor parts meet the manufacturer's highest quality used in the manufacture of the original equipment.

2. DESCRIPTION

The parts breakdown lists every part, assembly and sub-assembly of the compressor unit. Each part is identified with a number. The location of and relationship between parts are clearly illustrated. Questions pertaining to the number, description and quantities needed for each assembly are dealt with in the following pages.

3. TO ORDER PARTS

When ordering parts, furnish the following information to prevent any error:

- Model designation and serial number of the unit as shown on compressor nameplate.
- Reference number, part number, description and quantity required as listed.

4. RECOMMENDED SPARE PARTS LIST

A recommended spare parts list is provided at the end of this manual. The list indicates the description, part number, the quantity used in the compressor, and minimum quantities which should be carried to ensure maximum protection of the compressor. The recommended spare parts inventory to be kept on hand varies according to the location of the nearest distributor, and is broken down as follows:

- A. Local distributor
- B. Nearby distributor
- C. Remote distributor

5. CAUTION

NEVER use parts other than the ones approved by the manufacturer and listed in this parts manual. The use of parts not approved by the manufacturer may result in hazardous conditions, over which the manufacturer has no control, bodily injury, and damage to the compressor unit. Such action would invalidate the manufacturer's warranty of the compressor unit.

I N D E X

1

| | | | |
|------------|---------------------------------------|------------------|-----|
| Section 1: | INTRODUCTION | | |
| | 1. Foreword | | 2 |
| | 2. Description | | 2 |
| | 3. To order parts | | 2 |
| | 4. Recommended spare parts list | | 2 |
| Section 2: | PARTS LIST | Code/Drawing No. | |
| | Frame, casing | A 2 | 3 |
| | Driving system | B 1 | 4 |
| | Oil tubes, vent lines | C 1 | 5 |
| | Control tubes compressed air tubes | D 2/1 | 6-7 |
| | Inlet valve | 4.8650.5 | 8 |
| | Minimum pressure check valve | 200940.0 | 9 |
| | Combination valve | 2.9737.0 | 10 |
| | Combined discharge auxiliary valve | 200150.10020 | 11 |

Section 3: Recommended spare parts list

Caution

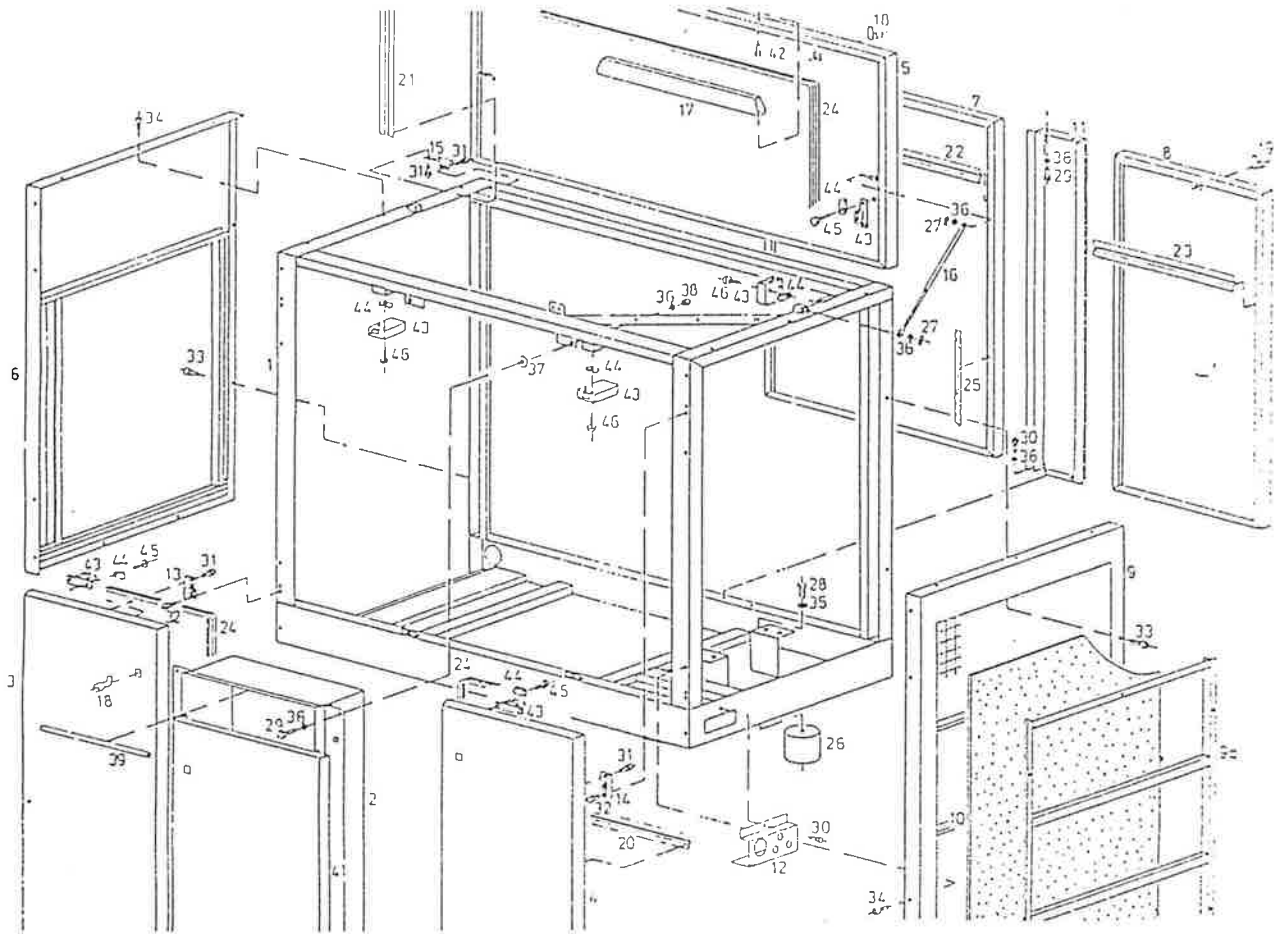
If not otherwise indicated all measurements in mm

R = Withword pipe thread

G = Ripe thread ISO 228

M = Metric ISO thread

Frame, Casing
CS 76/91 type

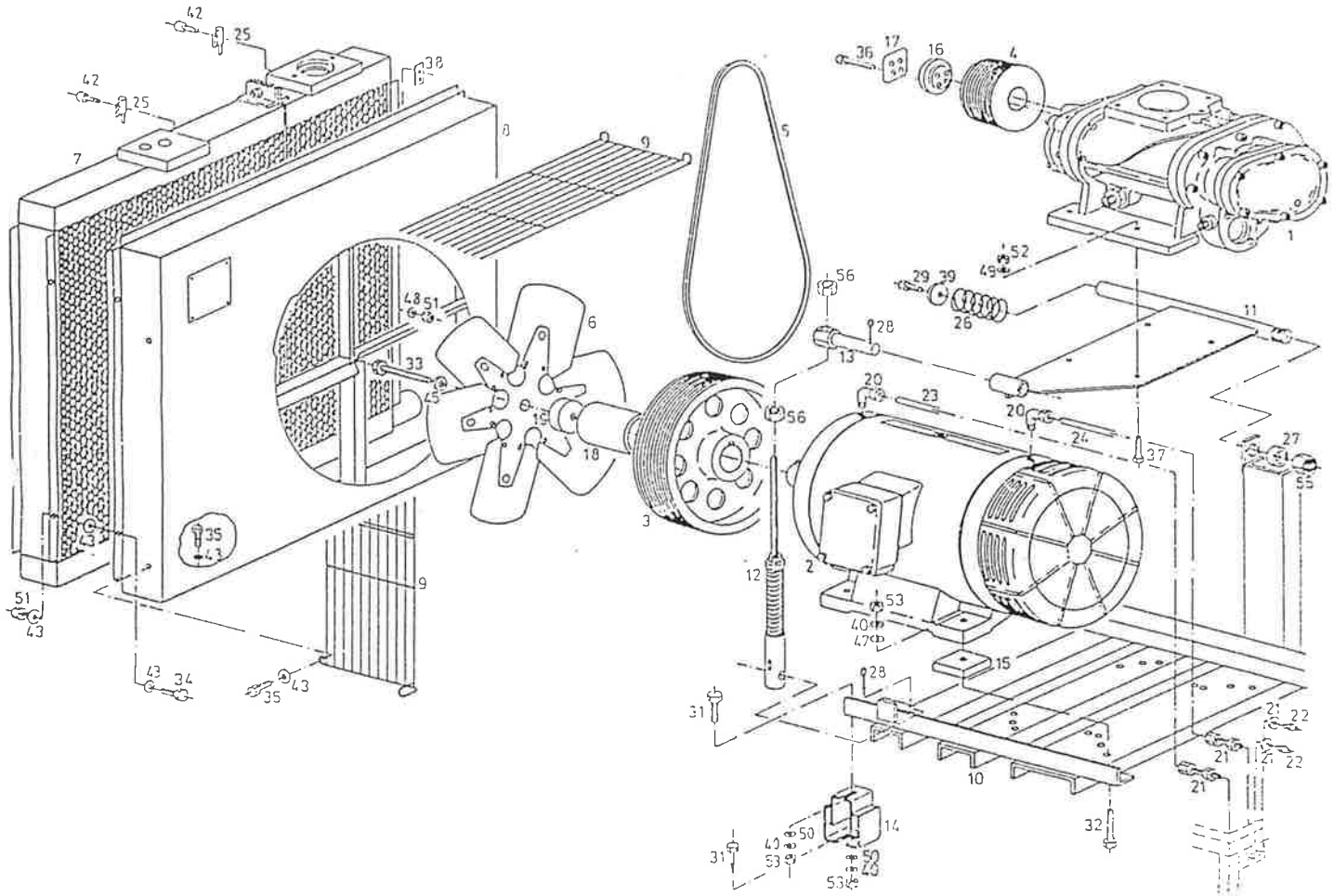


| Ref. | Qty. | Part.-No. | Description |
|--------|------|--------------|----------------------------------|
| 1 | 1 | 200900.0 | Frame |
| 2 | 1 | 7.5147.0 | Controller |
| 3 | 1 | 200931.0 | Door |
| 4 | 1 | 200932.0 | Door |
| 5 | 1 | 200937.0 | Door |
| 1,2) 6 | 1 | 200933.0 | Casing |
| 3) 6 | 1 | 200904.0 | Casing |
| 7 | 1 | 200935.0 | Casing |
| 8 | 1 | 200936.0 | Casing |
| 9 | 1 | 200934.0 | Casing |
| 9a | 1 | 200938.0 | Filter frame |
| 10 | 1 | 6.1945.0 | Filter mat |
| 11 | 1 | 200918.0 | Supporting pillar |
| 12 | 1 | 200320.0 | Plate |
| 13 | 2 | 9.2202.0 | Hinge |
| 14 | 2 | 9.2202.00010 | Hinge |
| 15 | 2 | 9.2204.0 | Hinge |
| 16 | 2 | 5.1331.00010 | Gas spring |
| 17 | 1 | 5.2695.0 | Grip |
| 18 | 6 | 9.0944.0 | Turning lock |
| 19 | 2 | 9.1374.0 | Turning lock |
| 20 | 4 | 201111.00010 | Support |
| 21 | 4 | 201111.0 | Support |
| 22 | 2 | 201111.00030 | Support |
| 23 | 2 | 201111.00020 | Support |
| 24 | 1 | 5.1398.0 | Gasket profile 551" |
| 25 | 1 | 5.1408.0 | Froth rubber band 300" |
| 26 | 4 | 6.1347.0 | Anti-vibration pads dia. 100x100 |
| 27 | 4 | 5.1330.0 | Split pin |
| 28 | 4 | 6.2203.0 | Hex.-head screw M 16 x 20 |
| 29 | 6 | 6.0726.0 | Hex.-head screw M 8 x 20 |
| 30 | 4 | 6.0724.0 | Hex.-head screw M 8 x 10 |
| 31 | 16 | 6.0720.0 | Hex.-head screw M 6 x 16 |
| 32 | 8 | 6.0746.0 | Hex.-head screw M 6 x 10 |
| 33 | 8 | 6.3104.0 | Phillips head screw M 5 x 35 |
| 34 | 12 | 6.0916.0 | Phillips head screw M 5 x 10 |
| 35 | 4 | 6.0627.0 | Washer |

| Ref. | Qty. | Part.-No. | Description |
|------|------|-----------|-------------------------------|
| 36 | 12 | 6.0623.0 | Washer |
| 37 | 2 | 6.0631.0 | Washer |
| 38 | 4 | 6.0684.0 | Hex. nut M 8 |
| 39 | 1 | 9.1554.0 | Cellular rubber 155" |
| 41 | 1 | 201347.0 | Door |
| 42 | 3 | 6.0725.0 | Hex.-head screw M 6 x 16 |
| 43 | 3 | 7.2470.0 | Door interlock switch |
| 44 | 12 | 6.3118.0 | Terminal clamp |
| 45 | 6 | 6.0901.0 | Fillister head screw M 5 x 15 |
| 46 | 6 | 6.3117.0 | Fillister head screw M 5 x 25 |

1) Unit CS 76
2) Unit CS 91
3) Unit CS 12"

Driving system
CS 76/91 type

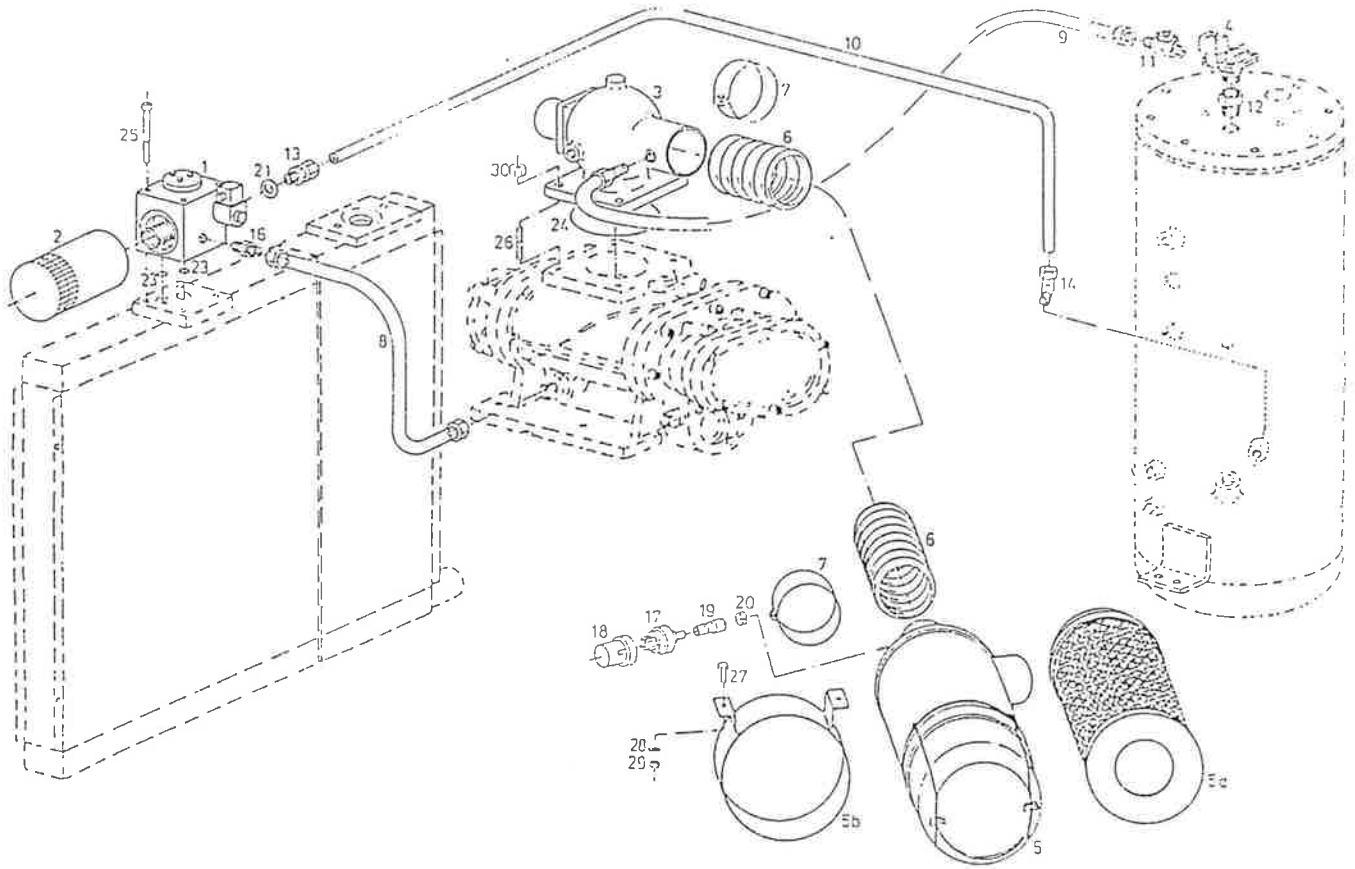


| Ref. | Qty. | Part-No. | Description |
|---------|------|--------------|----------------------------|
| 1-3) 1 | 1 | 1.7148.1 | Screw compressor Sigma 21 |
| 4-6) 1 | 1 | 1.7164.1 | Screw compressor Sigma 25 |
| 1-3) 2 | 1 | 7.3653.0 | Motor 3-phase 60 Hp, 460 V |
| 4-5) 2 | 1 | 7.3654.0 | Motor 3-phase 75 Hp, 460 V |
| 1-3) 3 | 1 | 200947.0 | Motor pulley dia. 399 |
| 4-6) 3 | 1 | 200948.0 | Motor pulley dia. 399 |
| 1) 4 | 1 | 200422.0 | Compressor pulley |
| 2) 4 | 1 | 201630.0 | Compressor pulley |
| 3) 4 | 1 | 202167.0 | Compressor pulley |
| 4) 4 | 1 | 202154.0 | Compressor pulley |
| 5) 4 | 1 | 200955.0 | Compressor pulley |
| 6) 4 | 1 | 202174.0 | Compressor pulley |
| 1) 5 | 1 | 6.2523.0 | Set of v-belts |
| 2) 5 | 1 | 6.2638.0 | Set of v-belts |
| 3) 5 | 1 | 6.2641.0 | Set of v-belts |
| 4) 5 | 1 | 6.2638.0 | Set of v-belts |
| 5) 5 | 1 | 6.2641.0 | Set of v-belts |
| 6) 5 | 1 | 6.2640.0 | Set of v-belts |
| 6 | 1 | 6.2535.0 | Fan wheel |
| 7 | 1 | 5.6800.00010 | Cooler |
| 8 | 1 | 200909.00010 | Fan case |
| 9 | 1 | 201349.0 | Steel mesh belt guard |
| 10 | 1 | 200910.1 | Swing frame |
| 11 | 1 | 200920.0 | Whip |
| 12 | 1 | 200952.0 | Balance adjustment |
| 13 | 1 | 200939.0 | Support |
| 14 | 4 | 6.1354.0 | Base of the machine |
| 1-3) 15 | 4 | 4.7586.0 | Steel plate |
| 16 | 1 | 2.5311.0 | Centering disk |
| 17 | 1 | 2.5372.0 | Locking plate |
| 18 | 1 | 200919.0 | Fan coupling |
| 19 | 1 | 200923.0 | Centering disk |
| 20 | 2 | 6.0266.0 | Angle fitting WE 1/8 |
| 21 | 2 | 2.9136.0 | Bulkhead stuffing box |
| 22 | 2 | 2.9137.0 | Lubricating nipple M 8 |
| 23 | 1 | 201319.0 | Tucalan line dia. 6 x 1900 |
| 24 | 1 | 201324.0 | Tucalan line dia. 6 x 1400 |

| Ref. | Qty. | Part-No. | Description |
|---------|------|--------------|--|
| 25 | 2 | 9.2201.00030 | Hinge |
| 26 | 1 | 5.2909.0 | Spring |
| 27 | 1 | 200626.0 | Tube 35 x 5 x 20 |
| 28 | 2 | 6.0617.0 | Split pin |
| 29 | 1 | 6.2213.0 | Hex.-head screw M 10 x 1 |
| 31 | 8 | 6.0813.0 | Hex.-head screw M 16 x 40 |
| 1-3) 32 | 4 | 6.2936.0 | Hex.-head screw M 16 x 100 |
| 4-6) 32 | 4 | 6.0781.0 | Hex.-head screw M 16 x 70 |
| 33 | 1 | 6.0796.0 | Hex.-head screw M 20 x 170 |
| 34 | 2 | 6.0804.0 | Hex.-head screw M 6 x 30 |
| 35 | 9 | 6.0726.0 | Hex.-head screw M 8 x 20 |
| 36 | 4 | 6.2221.0 | Hex.-head screw M 10 x 90 |
| 37 | 4 | 6.0794.0 | Hex.-head screw M 12 x 50 |
| 38 | 1 | 201633.0 | Thread plate |
| 39 | 1 | 6.3271.0 | Disk |
| 40 | 12 | 6.0657.0 | Spring washer |
| 42 | 4 | 6.0841.0 | Cylinder screw with inside hex. M 8 x 20 |
| 43 | 22 | 6.0631.0 | Washer |
| 45 | 1 | 6.0629.0 | Washer |
| 47 | 4 | 6.2376.0 | Washer |
| 48 | 2 | 6.0623.0 | Washer |
| 49 | 4 | 6.0633.0 | Washer |
| 50 | 8 | 6.0627.0 | Washer |
| 51 | 6 | 6.0684.0 | Hex. nut M 8 |
| 52 | 4 | 6.0686.0 | Hex. nut M 12 |
| 53 | 12 | 6.0688.0 | Hex. nut M 16 |
| 55 | 1 | 6.2957.0 | Hex. nut M 24 |
| 56 | 2 | 6.0693.0 | Hex. nut M 20 |

1) Unit CS 76/110 psig
2) Unit CS 76/145 psig ✓
3) Unit CS 76/190 psig
4) Unit CS 91/110 psig
5) Unit CS 91/145 psig
6) Unit CS 91/190 psig

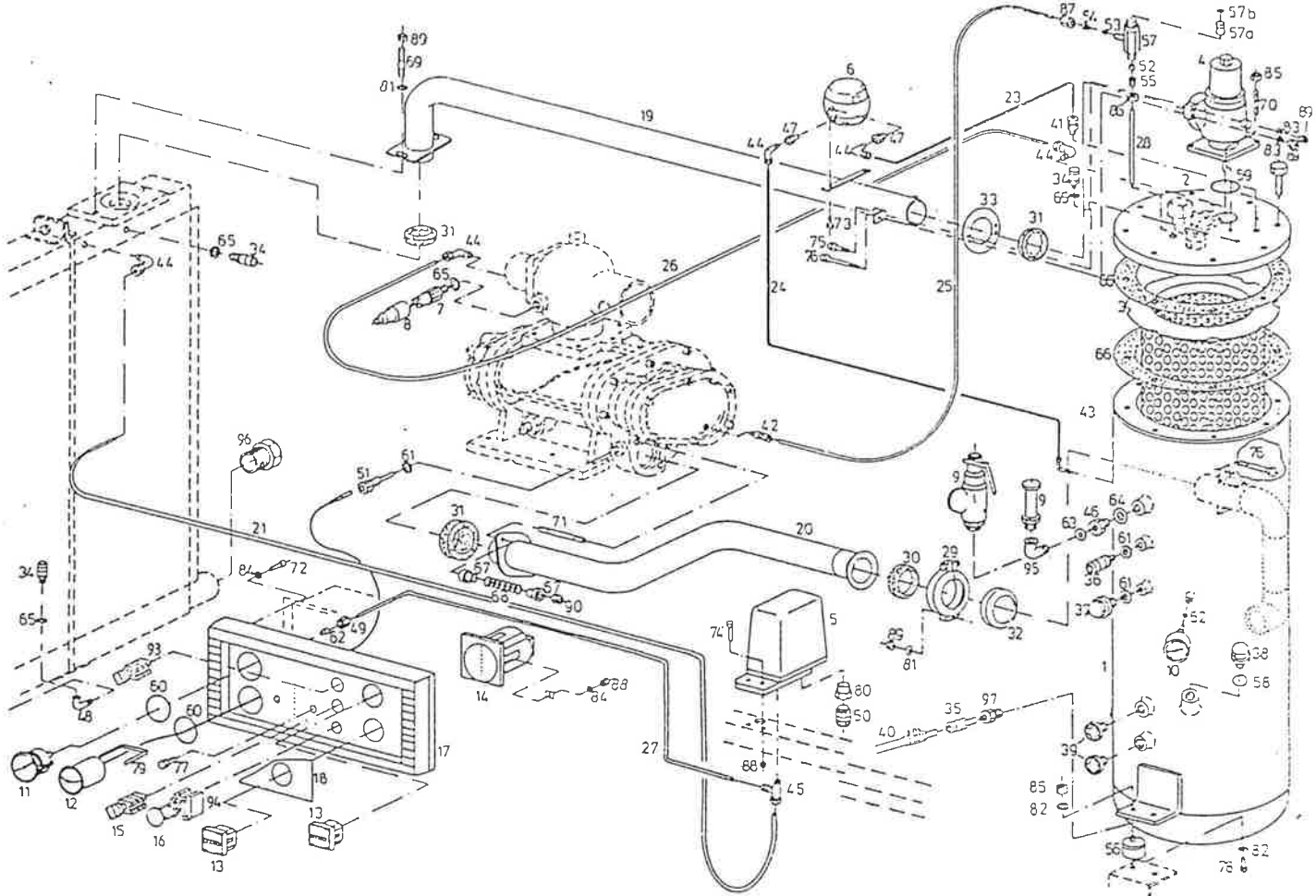
Oil tubes, Vent lines
CS 76/91 type



| Ref. | Qty. | Part.-No. | Description |
|---------|------|--------------|--|
| 1 | 1 | 2.9737.0 | Combination valve |
| 2 | 1 | 6.1981.0 | Filter cartridge |
| 3 | 1 | 4.8650.5 | Inlet valve |
| 4 | 1 | 200150.10020 | Vent valve |
| 5 | 1 | 6.1918.0 | Air filter complete |
| 5a | 1 | 6.1997.0 | Filter cartridge |
| 5b | 1 | 6.1919.0 | Support for air filter |
| 6 | 1 | 9.1013.00010 | Hose dia. 4" x 29 1/2" |
| 7 | 2 | 9.0658.0 | Hose clip |
| 8 | 1 | 8.1924.0 | Hose line dia. 3/4" x 29 1/2" |
| 9 | 1 | 8.1923.0 | Hose line dia. 1/2" x 37 3/8" |
| 10 | 1 | 201364.0 | Tube |
| 11 | 1 | 8.0259.0 | Ball cock R 1/2 |
| 12 | 1 | 6.1030.10040 | Fitting R 1/2 |
| 13 | 1 | 6.0274.0 | Pipe fitting R 3/4 |
| 1) 14 | 1 | 6.0259.0 | Angle fitting R 3/4 |
| 2,3) 14 | 1 | 2.9899.0 | Angle fitting R 3/4 |
| 16 | 1 | 200444.0 | Double nipple G 3/4 x R 3/4 |
| 17 | 1 | 7.0294.0 | Vacuum switch (-500 mm w.g.) |
| 18 | 1 | 7.0298.0 | Protecting cap |
| 19 | 1 | 5.1766.0 | Adaptor |
| 20 | 1 | 8.7293.0 | Hose clip |
| 21 | 1 | 6.1527.0 | Gasket R 3/4 |
| 23 | 2 | 5.1757.0 | O-ring dia. 22 x 3 |
| 24 | 1 | 5.1447.0 | O-ring dia. 100 x 3 |
| 25 | 4 | 6.2681.0 | Cylinder screw with inside hex. M 6 x 120 |
| 26 | 4 | 6.2713.0 | Stud M 10 x 25 |
| 27 | 2 | 6.0727.0 | Hex.-head screw M 8 x 25 |
| 28 | 2 | 6.0631.0 | Washer |
| 29 | 2 | 6.0684.0 | Hex. nut M 8 |
| 30 | 4 | 6.0685.0 | Hex. nut M 10 |

1) Unit CS 110 psig
2) Unit CS 145 psig
3) Unit CS 190 psig

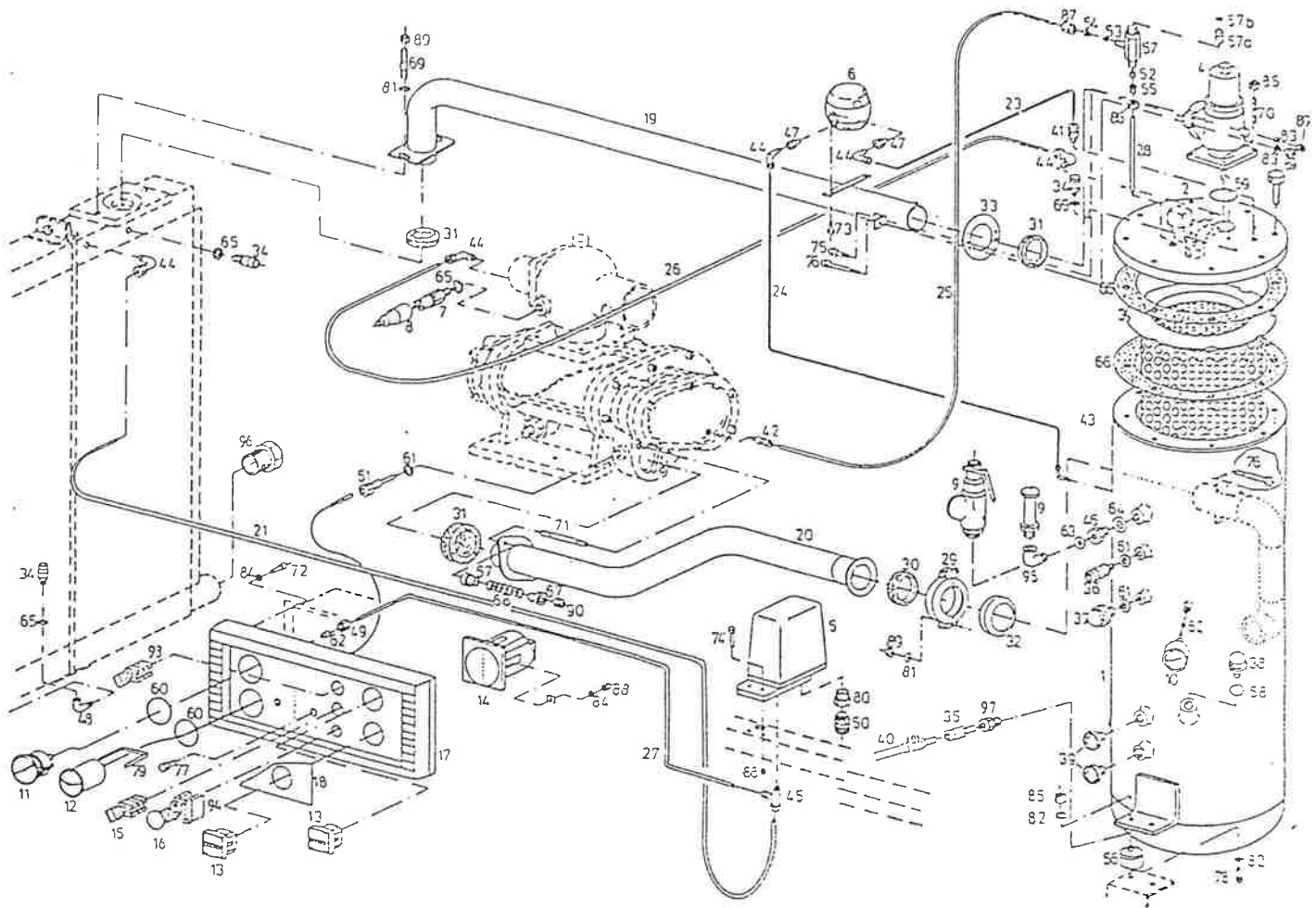
Control tubes,
Compressed air tubes
CS 76/91 type



| Ref. | Qty. | Part.-No. | Description |
|------|------|--------------|----------------------------------|
| 1 | 1 | 3.6051.00020 | Tank 30 gal |
| 2 | 1 | 200929.0 | Cover |
| 3 | 1 | 6.1965.0 | Oil separator cartridge |
| 4 | 1 | 200940.0 | Minimum pressure check valve G2 |
| 1,4) | 5 | 7.2973.0 | Pressure switch 115 psig |
| 2,5) | 5 | 7.2974.0 | Pressure switch 230 psig |
| 3,6) | 5 | 7.2974.00010 | Pressure switch 230 psig |
| 6 | 1 | 7.0217.0 | Difference pressure switch |
| 7 | 1 | 7.1422.0 | Pressure switch |
| 8 | 1 | 7.1505.0 | Protecting cap |
| 9 | 1 | 8.2057.0 | Safety valve |
| 9 | 1 | 8.2068.0 | Safety valve |
| 9 | 1 | 8.2072.0 | Safety valve |
| 10 | 1 | 8.0018.0 | Pressure gauge 0-360/220 psig |
| 1,4) | 11 | 8.0137.1 | Pressure gauge 0-145/110 psig |
| 2,5) | 11 | 8.0136.1 | Pressure gauge 0-230/145 psig |
| 3,6) | 11 | 8.0138.1 | Pressure gauge 0-230/190 psig |
| 12 | 1 | 8.0197.0 | Distance thermometer |
| 13 | 2 | 7.0784.0 | Hour meter |
| 14 | 1 | 7.3766.00120 | Malfunction relay |
| 15 | 1 | 7.2778.1 | Control switch |
| 16 | 1 | 7.3629.0 | Emergency stop button |
| 17 | 1 | 2.5918.0 | Instrument panel |
| 18 | 1 | 5.2519.0 | Foil label |
| 19 | 1 | 200950.0 | Air tube |
| 1-3) | 20 | 201148.00010 | Air tube |
| 4-6) | 20 | 201148.0 | Air tube |
| 21 | 1 | 9.0616.0 | Control tube dia. 1/4" x 55 1/4" |
| 23 | 1 | 9.0616.0 | Control tube dia. 1/4" x 9 1/4" |
| 24 | 1 | 9.0616.0 | Control tube dia. 1/4" x 10 1/4" |
| 1-3) | 25 | 9.0616.0 | Control tube dia. 1/4" x 28 3/8" |
| 4-6) | 25 | 9.0616.0 | Control tube dia. 1/4" x 26 3/4" |
| 26 | 1 | 9.0616.0 | Control tube dia. 1/4" x 49 1/4" |
| 27 | 1 | 9.0616.0 | Control tube dia. 1/4" x 24 7/8" |
| 28 | 1 | 201332.0 | Suction tube |
| 29 | 1 | 5.1126.0 | Tension clamp complete |
| 30 | 1 | 5.1392.0 | Gasket ring |

| Ref. | Qty. | Part.-No. | Description |
|------|------|--------------|----------------------------------|
| 28 | 1 | 201332.0 | Suction tube |
| 29 | 1 | 5.1126.0 | Tension clamp complete |
| 30 | 1 | 5.1392.0 | Gasket ring |
| 31 | 3 | 5.1774.0 | Gasket ring |
| 32 | 1 | 5.1123.0 | Support for gasket ring |
| 33 | 1 | 201348.0 | Disk |
| 34 | 3 | 9.0843.1 | Hose coupling G 1/4 |
| 35 | 1 | 9.1285.1 | Hose coupling G 1/2 |
| 36 | 1 | 9.0344.1 | Hose coupling G 3/8 |
| 37 | 1 | 6.0501.0 | Locking screw G 3/8 |
| 38 | 1 | 6.0519.0 | Locking screw G 1 1/4 |
| 39 | 2 | 6.0105.0 | Oil sight glass G 3/4 |
| 40 | 1 | 8.1928.0 | Hose line DN 13 x 1500 |
| 41 | 1 | 6.0229.0 | Pipe fitting R 1/4 |
| 42 | 1 | 6.0231.0 | Pipe fitting R 1/8 |
| 43 | 1 | 6.0249.0 | Angle fitting R 1/4 |
| 44 | 5 | 6.0266.0 | Angle fitting R 1/8 |
| 45 | 1 | 6.0267.0 | T pipe fitting R 1/8 |
| 1/4) | 46 | 6.3203.0 | Reducing socket NPT 1 x 3/4 |
| 3,6) | 46 | 6.3206.0 | Reducing socket 1 NPT x G 1 2 |
| 47 | 2 | 5.0820.0 | Reducing socket G 1/4 x G 1/8 |
| 48 | 1 | 6.1059.0 | Elbow R 1/4 |
| 49 | 1 | 6.0390.0 | Pipe fitting G 1/4 |
| 50 | 1 | 7.0742.0 | Cable fitting PG 11 |
| 51 | 1 | 5.0920.0 | Protection sleeve G 3/8 |
| 52 | 1 | 5.2692.0 | Clamp ring |
| 53 | 1 | 6.2483.0 | Stud bolt |
| 54 | 1 | 6.0353.0 | Stuffing cone |
| 55 | 1 | 6.1676.00020 | Fitting |
| 56 | 4 | 6.1335.0 | Anti-vibration pads dia. 50 x 45 |
| 57 | 1 | 2.8542.10010 | Dirt trap |
| 57a | 1 | 2.8699.0 | Dirt trap strainer |
| 57b | 1 | 5.1517.0 | O-ring dia. 18 x 2 |
| 58 | 1 | 5.1455.0 | O-ring dia. 47 x 2 |
| 59 | 1 | 5.1466.0 | O-ring dia. 52 x 3,5 |
| 60 | 2 | 5.1456.00010 | O-ring dia. 58 x 2 |

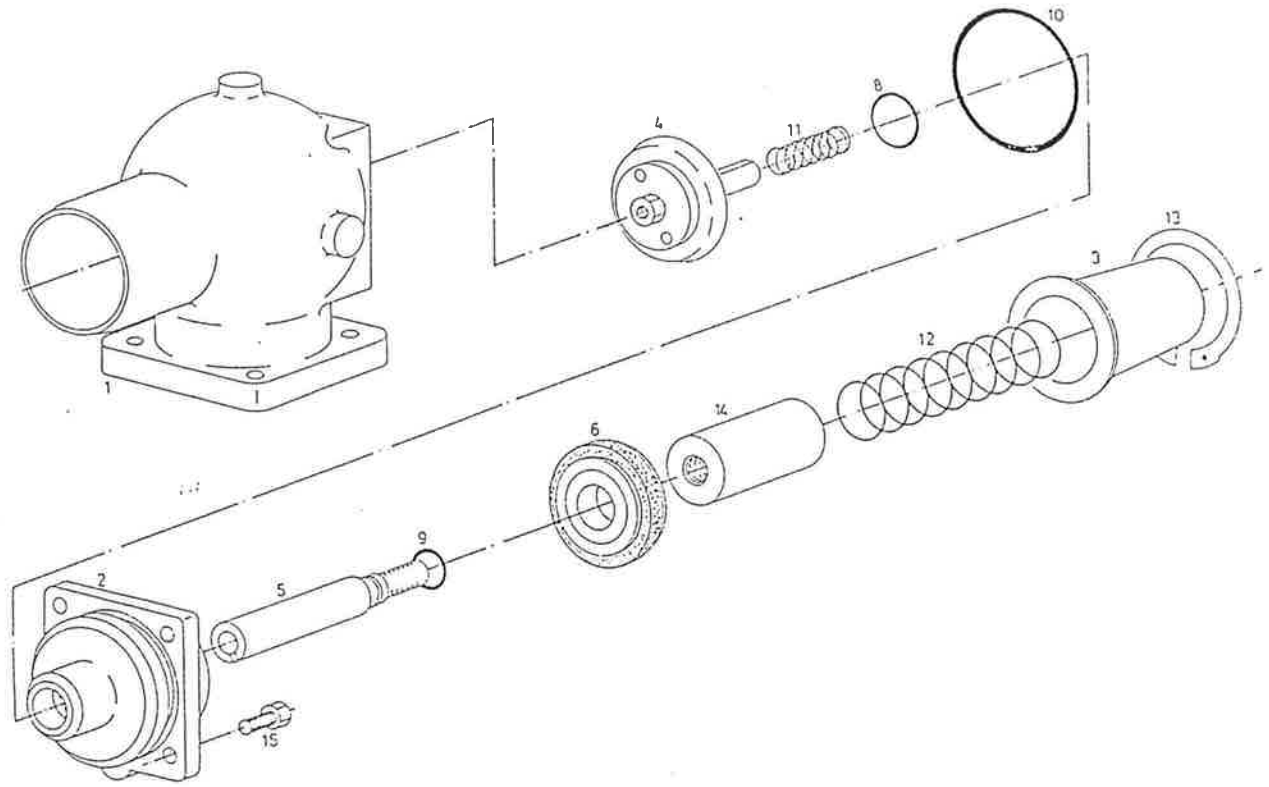
Control tubes,
Compressed air tubes
CS 76/91 type



| Ref. | Qty. | Part.-No. | Description |
|---------|------|--------------|--|
| 61 | 3 | 6.1521.0 | Gasket G 3/8 |
| 62 | 2 | 6.0470.0 | Gasket for pressure gauge G 1,4 |
| 64 | 1 | 6.1527.0 | Gasket G 3/4 |
| 65 | 4 | 6.1544.0 | Gasket G 1/4 |
| 66 | 2 | 5.0566.0 | Gasket for tank |
| 67 | 4 | 2.00669.0 | Pilot segment |
| 68 | 2 | 5.2918.0 | Spring |
| 69 | 2 | 6.2351.0 | Stud M 8 x 22 |
| 70 | 4 | 6.2713.0 | Stud M 10 x 25 |
| 71 | 2 | 6.2747.0 | Stud M 10 x 90 |
| 72 | 4 | 6.0790.0 | Cylinder screw with inside hex, M 6 x 16 |
| 73 | 2 | 6.0746.0 | Hex.-head screw M 6 x 10 |
| 74 | 2 | 6.0721.0 | Hex.-head screw M 6 x 2 |
| 75 | 2 | 6.0731.0 | Hex.-head screw M 8 x 45 |
| 76 | 4 | 6.0735.0 | Hex.-head screw M 8 x 70 |
| 77 | 2 | 6.0720.0 | Hex.-head screw M 6 x 16 |
| 78 | 4 | 6.0761.0 | Hex.-head screw M 10 x 20 |
| 79 | 1 | 8.0172.00010 | Support for distance thermometer |
| 80 | 1 | 7.2926.0 | Reducing ring PG 16/11 |
| 81 | 4 | 6.0631.0 | Washer |
| 82 | 8 | 6.2373.0 | Washer |
| 83 | 4 | 6.0623.0 | Washer |
| 84 | 6 | 6.0622.0 | Washer |
| 85 | 8 | 6.0685.0 | Hex. nut M 10 |
| 86 | 1 | 6.1676.00010 | Screw cap M 17 x 1 |
| 87 | 1 | 6.0373.0 | Screw cap M 17 x 1 |
| 88 | 4 | 6.0682.0 | Hex. nut M 6 |
| 89 | 8 | 6.2431.0 | Hex. nut M 8 |
| 90 | 2 | 6.2432.0 | Hex. nut M 10 |
| 93 | 1 | 7.2782.1 | Selector switch |
| 94 | 1 | 7.3630.0 | Contact |
| 1,4) 95 | 1 | 6.3232.0 | Angle NPT 3/4 |
| 2,5) 95 | 1 | 6.3208.0 | Angle NPT 1/2 |
| 3,6) 96 | 1 | 4.4447.00020 | Adapter G 2 x NP 2 |

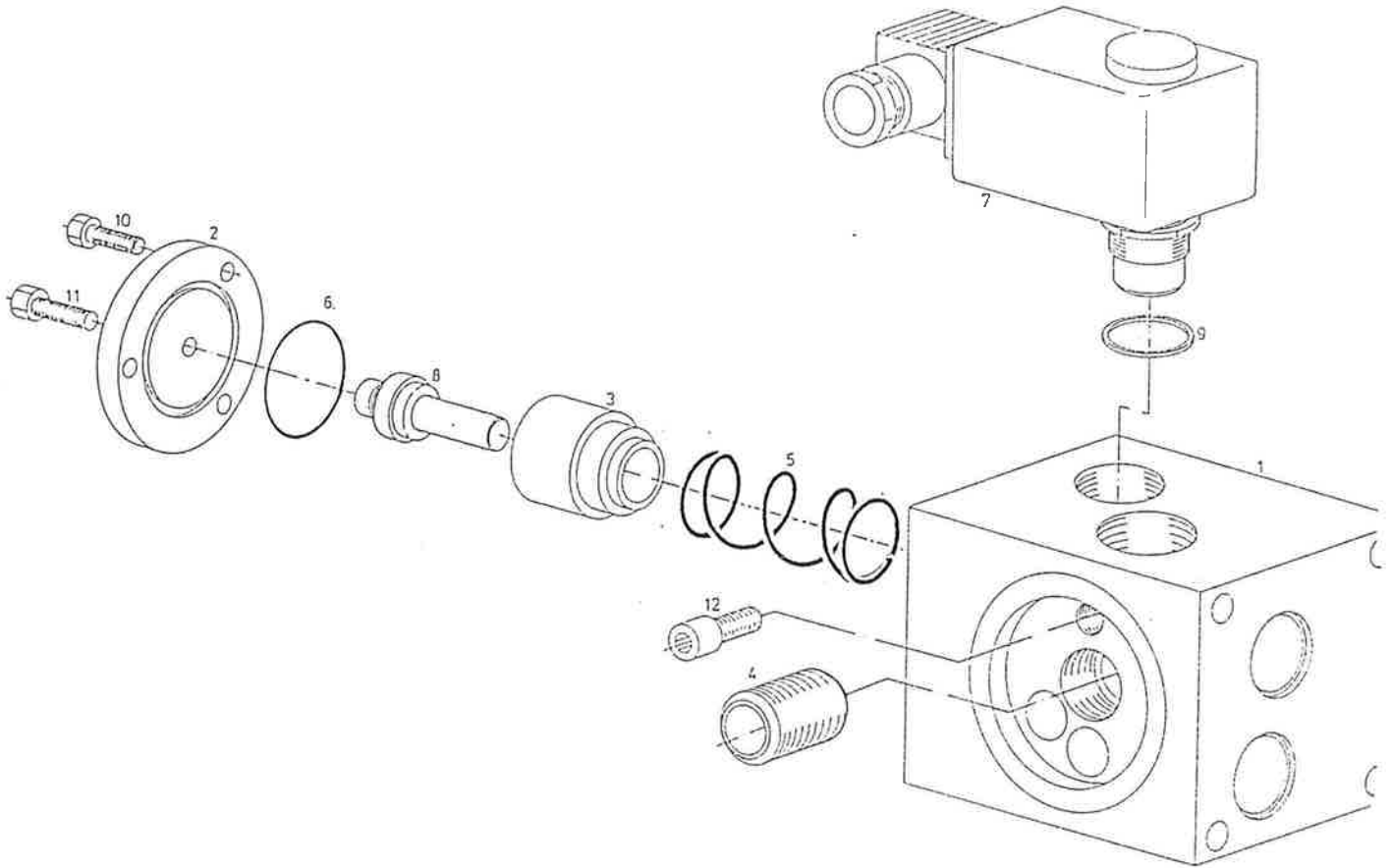
| Ref. | Qty. | Part.-No. | Description |
|------|------|-----------|-------------------------------|
| 97 | 1 | 5.0826.0 | Reducing socket G 3/4 x G 1:2 |
| | | | 1) Unit CS 76/110 psig |
| | | | 2) Unit CS 76/145 psig |
| | | | 3) Unit CS 76/190 psig |
| | | | 4) Unit CS 91/110 psig |
| | | | 5) Unit CS 91/145 psig |
| | | | 6) Unit CS 91/190 psig |
| | | | 7) Depending on the design |

Inlet valve
4.8650.5



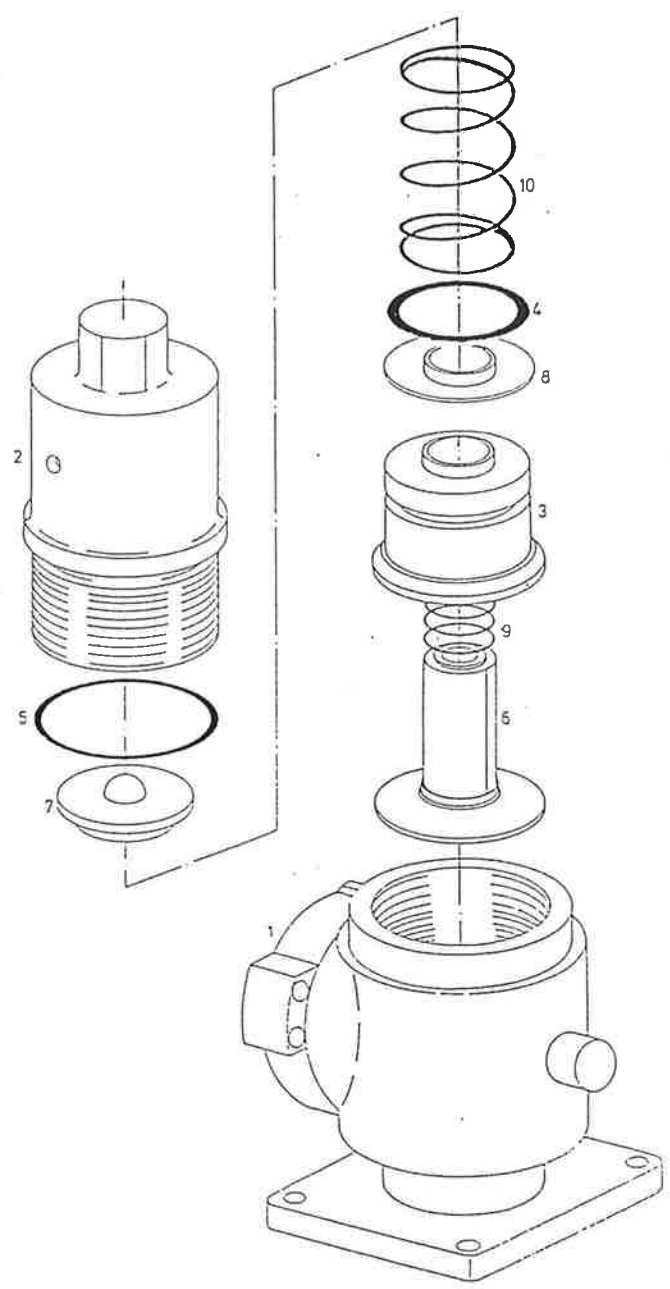
| Ref. | Qty. | Part-No. | Description |
|------|------|----------|------------------------------|
| 1 | 1 | 200483.0 | Valve chamber |
| 2 | 1 | 200486.0 | Flange |
| 3 | 1 | 200474.0 | Cap |
| 4 | 1 | 202204.0 | Valve disk complete |
| 5 | 1 | 200485.0 | Valve piston |
| 6 | 1 | 202603.0 | Lip seal attachment complete |
| 8 | 1 | 5.1454.0 | O-ring dia. 25 x 3 |
| 9 | 1 | 5.1519.0 | O-ring dia. 16 x 2 |
| 10 | 1 | 5.1453.0 | O-ring dia. 100 x 2.5 |
| 11 | 1 | 5.2919.0 | Compression spring |
| 12 | 1 | 5.2917.0 | Compression spring |
| 13 | 1 | 6.2848.0 | Guard ring |
| 14 | 1 | 200915.0 | Spring guide |
| 15 | 4 | 6.0726.0 | Hex.-head screw M 6 x 20 |

Combination valve
2.9737.0



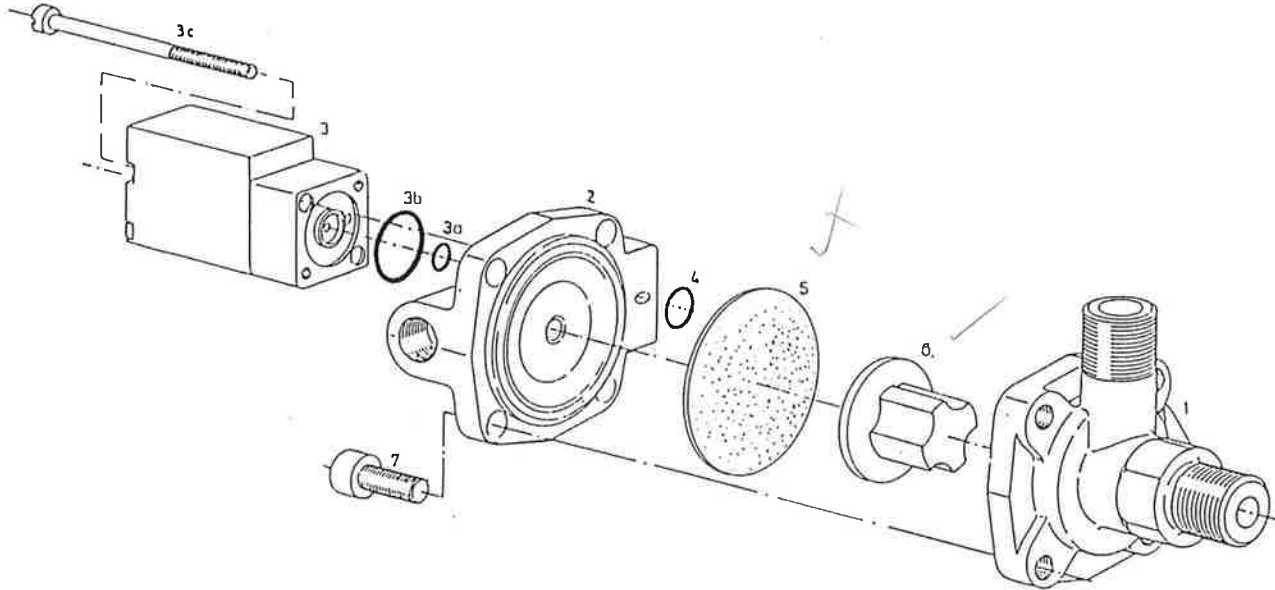
| Ref. | Qty. | Part.-No. | Description |
|------|------|-----------|---|
| 1 | 1 | 2.9668.0 | Valve body |
| 2 | 1 | 2.9721.0 | Cover |
| 3 | 1 | 2.9722.0 | Actuating piston |
| 4 | 1 | 5.0761.0 | Thread nipple |
| 5 | 1 | 5.0636.0 | Compression spring |
| 6 | 1 | 5.1523.0 | O-ring dia. 38 x 2 |
| 7 | 1 | 7.1407.0 | Difference pressure switch |
| 8 | 1 | 7.2013.0 | Working element |
| 9 | 1 | 6.1534.0 | Gasket |
| 10 | 3 | 6.0720.0 | Hex.-head screw M 6 x 16 |
| 11 | 1 | 6.0722.0 | Hex.-head screw M 6 x 25 |
| 12 | 1 | 6.2918.0 | Cylinder screw with inside hex. M 5 x 12 |

Minimum pressure
check valve
200940.0



| Ref. | Qty. | Part.-No. | Description |
|------|------|-----------|----------------------|
| 1 | 1 | 200941.0 | Valve body |
| 2 | 1 | 200942.0 | Cylinder |
| 3 | 1 | 200943.0 | Piston |
| 4 | 1 | 5.2597.0 | O-ring dia. 47 x 4.0 |
| 5 | 1 | 5.1537.0 | O-ring dia. 75 x 3.0 |
| 6 | 1 | 200944.0 | Valve disk |
| 7 | 1 | 200945.0 | Spring plate |
| 8 | 1 | 200930.0 | Spring sitting |
| 9 | 1 | 5.2922.0 | Compression spring |
| 10 | 1 | 5.2924.0 | Compression spring |

Combined discharge
auxiliary valve
200150.10020



| Ref. | Qty. | Part.-No. | Description |
|------|------|-----------|--|
| 1 | 1 | 5.1167.1 | Crankcase |
| 2 | 1 | 5.1161.2 | Cover |
| 3 | 1 | 7.1384.1 | Solenoid valve |
| 3a | 1 | 5.1586.0 | O-ring dia. 3 x 1.5 |
| 3b | 1 | 5.1339.0 | O-ring dia. 12 x 1.5 |
| 3c | 2 | 6.3110.0 | Fillister head screw M 3 x 45 |
| 4 | 1 | 5.1582.0 | O-ring dia. 6 x 1.25 |
| 5 | 1 | 5.0999.0 | Diaphragm |
| 6 | 1 | 5.2714.1 | Piston |
| 7 | 4 | 6.2408.0 | Cylinder head screw with inside hex. M 5 x 12 |

RECOMMENDED SPARE PARTS LIST



Type CS 76/91

| DESCRIPTION | Part No. | Qty per unit | LOCATION | | Recommended Quantities | | |
|---------------------------|--------------|--------------|-------------------------------------|------|------------------------|---|---|
| | | | Section | Ref. | A | B | C |
| Oil filter cartridge | 6.1981.0 | 1 | Oil tubes, vent lines | 2 | 1 | 2 | 3 |
| Oil separator cartridge | | | | | | | |
| Complete set consists of: | | | | | 1 | 1 | 2 |
| Oil separator cartridge | 6.1965.0 | 1 | Control tubes, compressed air tubes | 3 | | | |
| Gasket for tank | 5.0566.0 | 2 | Control tubes, compressed air tubes | 66 | | | |
| O-ring dia. | 5.1517.0 | 1 | Control tubes, compressed air tubes | 57b | | | |
| Dirt trap strainer | 2.8699.0 | 1 | Control tubes, compressed air tubes | 57a | | | |
| V-belt set CS 76/110 psig | 6.2523.0 | 1 | Driving system | 5 | 1 | 1 | 2 |
| V-belt set CS 76/145 psig | 6.2638.0 | 1 | Driving system | 5 | 1 | 1 | 2 |
| V-belt set CS 76/190 psig | 6.2641.0 | 1 | Driving system | 5 | 1 | 1 | 2 |
| V-belt set CS 91/110 psig | 6.2638.0 | 1 | Driving system | 5 | 1 | 1 | 2 |
| V-belt set CS 91/145 psig | 6.2641.0 | 1 | Driving system | 5 | 1 | 1 | 2 |
| V-belt set CS 91/190 psig | 6.2640.0 | 1 | Driving system | 5 | 1 | 1 | 2 |
| O-ring dia. 22 x 3 | 5.1757.0 | 2 | Oil tubes, vent lines | 23 | 1 | 1 | 2 |
| O-ring dia. 100 x 3 | 5.1447.0 | 1 | Oil tubes, vent lines | 24 | 1 | 1 | 2 |
| O-ring dia. 47 x 2 | 5.1455.0 | 1 | Control tubes, compressed air tubes | 58 | 1 | 1 | 2 |
| O-ring dia. 52 x 3.5 | 5.1466.0 | 1 | Control tubes, compressed air tubes | 59 | 1 | 1 | 2 |
| O-ring dia. 58 x 2 | 5.1456.00010 | 2 | Control tubes, compressed air tubes | 60 | 1 | 1 | 2 |
| O-ring dia. 25 x 3 | 5.1454.0 | 1 | Inlet valve | 8 | 1 | 1 | 2 |
| O-ring dia. 16 x 2 | 5.1519.0 | 1 | Inlet valve | 9 | 1 | 1 | 2 |
| O-ring dia. 100 x 2.5 | 5.1483.0 | 1 | Inlet valve | 10 | 1 | 1 | 2 |
| O-ring dia. 38 x 2 | 5.1523.0 | 1 | Combination valve | 6 | 1 | 1 | 2 |
| O-ring dia. 47 x 4 | 5.2697.0 | 1 | Minimum pressure check valve | 4 | 1 | 1 | 2 |
| O-ring dia. 75 x 3 | 5.1587.0 | 1 | Minimum pressure check valve | 5 | 1 | 1 | 2 |
| O-ring dia. 6 x 1.25 | 5.1582.0 | 1 | Combined discharge auxiliary valve | 4 | 1 | 1 | 2 |
| Gasket G 3/8 | 6.1521.0 | 3 | Control tubes, compressed air tubes | 61 | 1 | 1 | 2 |
| Gasket G 1/4 | 6.0470.0 | 2 | Control tubes, compressed air tubes | 62 | 1 | 1 | 2 |
| Gasket G 3/4 | 6.1527.0 | 1 | Control tubes, compressed air tubes | 64 | 1 | 1 | 2 |
| Gasket G 1/4 | 6.1544.0 | 4 | Control tubes, compressed air tubes | 65 | 1 | 1 | 2 |
| Gasket ring | 5.1392.0 | 1 | Control tubes, compressed air tubes | 30 | 1 | 1 | 2 |
| Gasket ring | 5.1774.0 | 3 | Control tubes, compressed air tubes | 31 | 1 | 1 | 2 |
| Gasket ring | 5.1392.0 | 1 | Control tubes, compressed air tubes | 30 | 1 | 1 | 2 |
| Gasket R 3/4 | 6.1527.0 | 1 | Oil tubes, vent lines | 21 | 1 | 1 | 2 |
| Gasket | 6.1534.0 | 1 | Combination valve | 9 | 1 | 1 | 2 |
| Gasket | 5.2714.0 | 1 | Combined discharge auxiliary valve | 6 | 1 | 1 | 2 |
| Diaphragm | 5.0999.0 | 1 | Combined discharge auxiliary valve | 5 | 1 | 1 | 2 |
| Valve piston | 200485.0 | 1 | Inlet valve | 5 | 1 | 1 | 2 |
| Piston | 200943.0 | 1 | Minimum pressure check valve | 3 | 1 | 1 | 2 |
| Pressure switch 115 psig | 7.2973.0 | 1 | Control tubes, compressed air tubes | 5 | 0 | 1 | 1 |
| Pressure switch 230 psig | 7.2974.0 | 1 | Control tubes, compressed air tubes | 5 | 0 | 1 | 1 |
| Pressure switch 230 psig | 7.2974.00010 | 1 | Control tubes, compressed air tubes | 5 | 0 | 1 | 1 |
| Valve disk complete | 202204.0 | 1 | Inlet valve | 4 | 1 | 1 | 2 |
| Valve disk | 200944.0 | 1 | Minimum pressure check valve | 6 | 1 | 1 | 2 |
| Compression spring | 5.2919.0 | 1 | Inlet valve | 11 | 0 | 1 | 1 |
| Compression spring | 5.2917.0 | 1 | Inlet valve | 12 | 0 | 1 | 1 |
| Compression spring | 5.0636.0 | 1 | Combination valve | 5 | 0 | 1 | 1 |
| Compression spring | 5.2922.0 | 1 | Minimum pressure check valve | 9 | 0 | 1 | 1 |

RECOMMENDED SPARE PARTS LIST



Type CS 76/91

| DESCRIPTION | Part No. | Qty per unit | LOCATION | | Recommended Quantities | | |
|------------------------------|---------------|--------------|------------------------------|------|------------------------|---|---|
| | | | Section | Ref. | A | B | C |
| Compression spring | 5.2924.0 | 1 | Minimum pressure check valve | 10 | 0 | 1 | 1 |
| Working element | 7.2013.0 | 1 | Combination valve | 8 | 1 | 1 | 2 |
| Inlet valve | 4.8650.0 | 1 | Oil tubes, vent lines | 3 | 0 | 0 | 1 |
| Vent valve | 2.00150.10020 | 1 | Oil tubes, vent lines | 4 | 0 | 0 | 1 |
| Minimum pressure check valve | 200940.0 | 1 | Control tubes, air tubes | 4 | 0 | 0 | 1 |
| Combination valve | 2.9737.0 | 1 | Oil tubes, vent lines | 1 | 0 | 0 | 1 |