

**AS 30**

**AS 35**

**KAESER - Control**

**A 31**

**B 30**

**C 30**

**D 33**

**KAESER COMPRESSORS, INC.**

P.O. Box 74 16 • 239 Industrial Drive, Fredericksburg, Virginia 22 401 • Tel. (703) 898.5500 • FAX (703) 898-5520

**I N D E X**

Page

1

**Section 1:**

**INDRODUCTION**

1. Foreword	2
2. Description	2
3. To order parts	2
4. Recommended spare parts list	2
5. Caution	2

**Section 2:**

**PARTS LIST**

**Code/Drawing No**

Frame, casing	A31	3
Driving system	B30	4
Oil tubes, vent lines	C30	5
Control tubes, compressed air tubes	D33	6-7
Vent valve	4.7340.0	8
Inlet valve	4.7386.1	9
Minimum pressure check valve	4.7333.0	10
Combination valve	4.8865.1	11
Check valve	4.7392.0	12
Control valve	2.0711.0	13
Oil stop valve	2.0701.0	14

**Section 3:**

**Recommended spare parts list**

15 - 19

**SECTION 1****I N T R O D U C T I O N****1. FOREWORD**

This manual is provided for the operator's use and reference when ordering parts. An illustrated parts breakdown is included for identification. All compressor parts meet the manufacturer's highest quality used in the manufacture of the original equipment.

**2. DESCRIPTION**

The parts breakdown lists every part, assembly and sub-assembly of the compressor unit. Each part is identified with a number. The location of and relationship between parts are clearly illustrated. Questions pertaining to the number, description and quantities needed for each assembly are dealt with in the following pages.

**3. TO ORDER PARTS**

When ordering parts, furnish the following information to prevent any error:

- Model designation and serial number of the unit as shown on compressor nameplate.
- Reference number, part number, description and quantity required as listed.

**4. RECOMMENDED SPARE PARTS LIST**

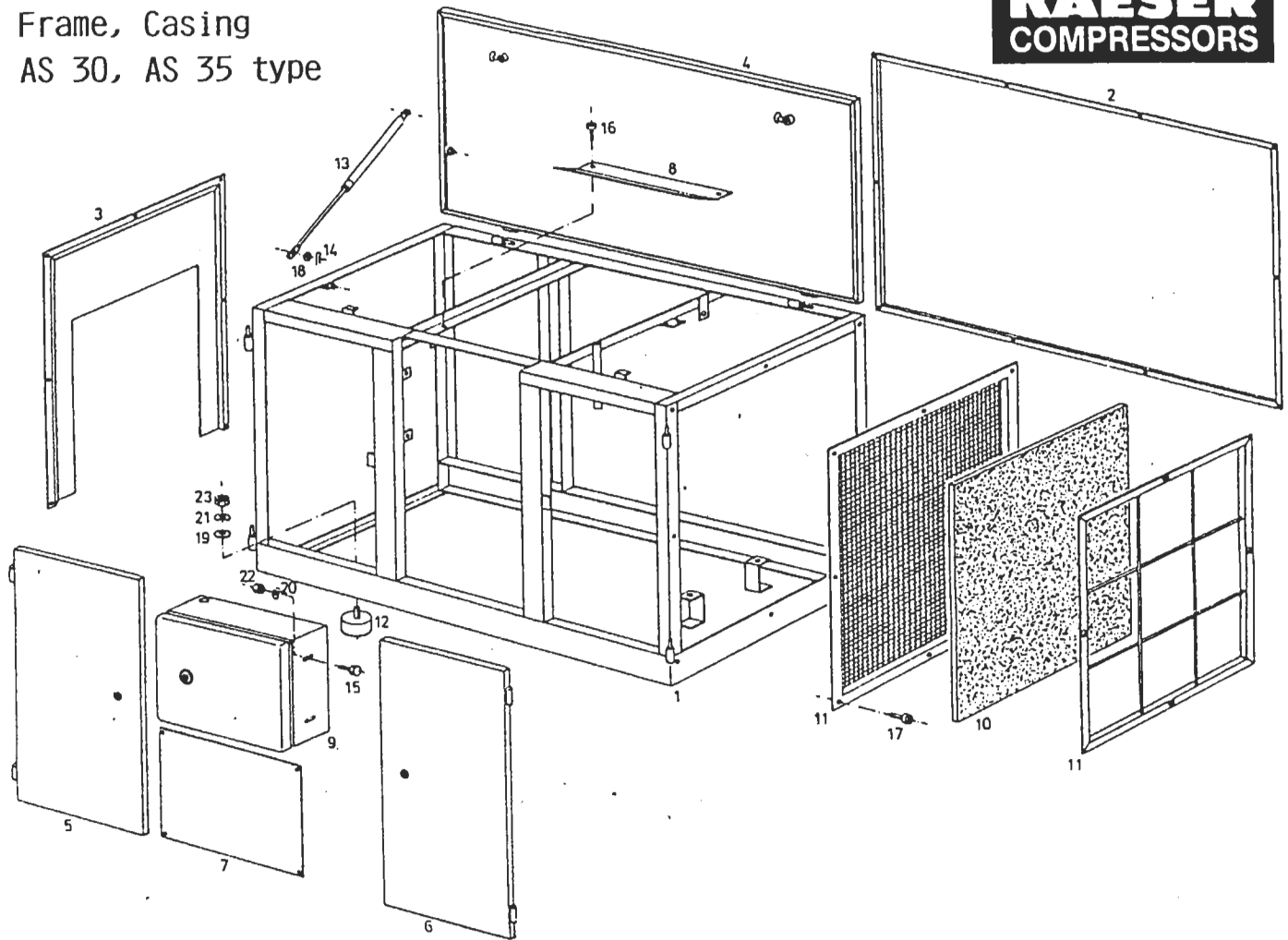
A recommended spare parts list is provided at the end of this manual. The list indicates the description, part number, the quantity used in the compressor, and minimum quantities which should be carried to ensure maximum protection of the compressor. The recommended spare parts inventory to be kept on hand varies according to the location of the nearest distributor, and is broken down as follows:

- A. Local distributor
- B. Nearby distributor
- C. Remote distributor.

**5. CAUTION**

NEVER use parts other than the ones approved by the manufacturer and listed in this parts manual. The use of parts not approved by the manufacturer may result in hazardous conditions, over which the manufacturer has no control, bodily injury, and damage to the compressor unit. Such action would invalidate the manufacturer's warranty of the compressor unit.

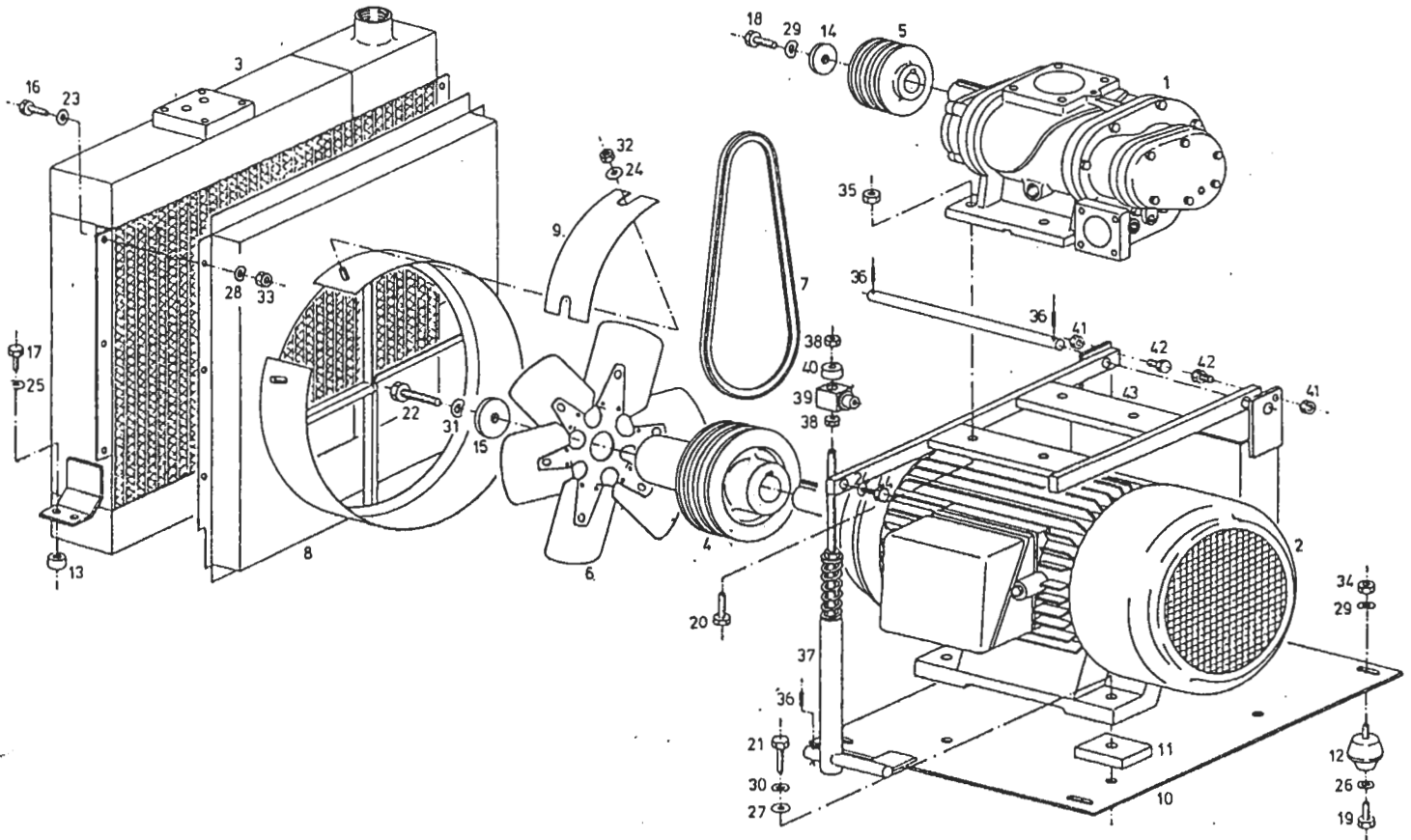
Frame, Casing  
AS 30, AS 35 type



Ref.	Qty	Part No.	Description
1	1	4.9313.0	Frame
2	1	4.8203.0	Casing
3	1	4.7034.1	Casing
4	1	4.8202.0	Door
5	1	4.7036.1	Door
6	1	4.7037.1	Door
7	1	4.8204.0	Cover plate
8	1	4.8201.0	Cover plate
1) 9	1	7.2303.2	Controller
2) 9	1	7.2304.2	Controller
10	1	6.1943.0	Filter mat
11	1	4.9259.0	Quick-change frame
12	4	6.1343.0	Anti-vibration pads dia. 15/16 x 2 3/16"
13	1	5.1331.0	Gas spring
14	2	5.1330.0	Split pin
15	4	6.0800.0	Hex.-hd. screw M 5 x 15
16	2	6.0897.0	Philips head screw M 4 x 10
17	29	6.0916.0	Philips head screw M 5 x 10
18	2	6.0623.0	Washer
19	4	6.0625.0	Washer
20	4	6.0651.0	Spring washer
21	4	6.0655.0	Spring washer
22	4	6.0681.0	Hex. nut M 5
23	4	6.0686.0	Hex. nut M 12

1) Compressor Unit AS 30  
2) Compressor Unit AS 35

## Driving system AS 30/35 type

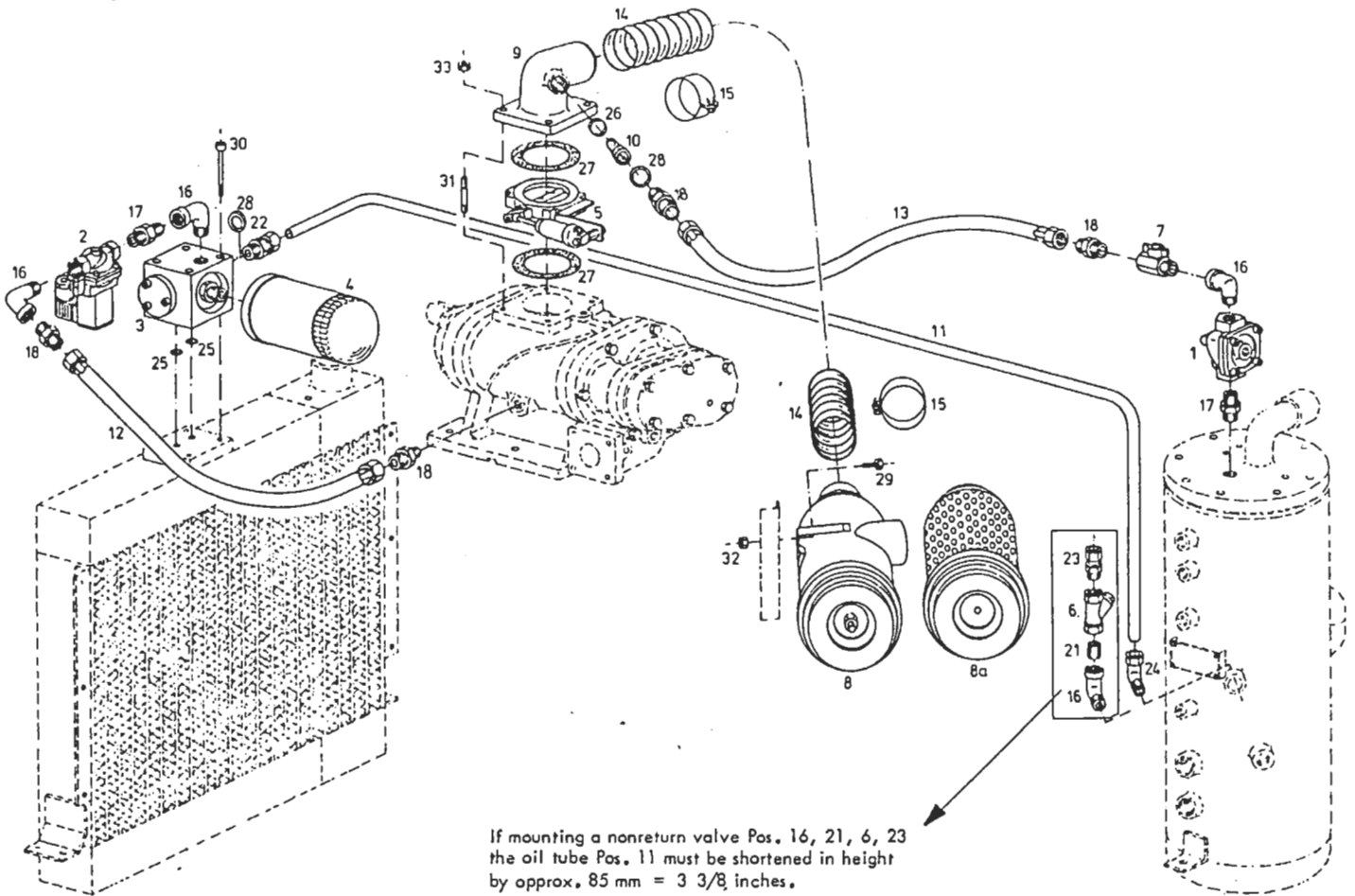


Ref.	Qty.	Part No.	Description
1	1	1.3849.4	Screw compressor Sigma 1a
1-3) 2	1	7.0028.0	Motor, 3-phase 18,5 kW, 230/460 V
4-6) 2	1	7.0030.0	Motor 3-phase 22 kW 230/460 V
3	1	5.1071.20010	Cooler
1-3) 4	1	4.7711.0	Motor pulley dia. 8 1/4"
4-6) 4	1	4.7712.0	Motor pulley dia. 8 1/4"
1) 5	1	4.9867.0	Compressor pulley dia. 6 3/16"
2) 5	1	4.9869.0	Compressor pulley dia. 6 7/8"
3) 5	1	4.9870.0	Compressor pulley dia. 7 15/16"
4) 5	1	2.5927.0	Compressor pulley dia. 5 5/8"
5) 5	1	2.5968.0	Compressor pulley dia. 6 5/16"
6) 5	1	2.5969.0	Compressor pulley dia. 6 3/16"
6	1	4.9190.0	Fan wheel
1) 7	1	6.2506.0	Set of v-belts
2) 7	1	6.2507.0	Set of v-belts
3) 7	1	6.2507.0	Set of v-belts
4) 7	1	6.2509.0	Set of v-belts
5) 7	1	6.2501.0	Set of v-belts
6) 7	1	6.1447.0	Set of v-belts
8	1	4.7144.2	Fan case
9	1	4.4335.0	Cover plate
1-3) 10	1	4.8333.0	Swing frame
4-6) 10	1	2.0859.0	Swing frame
1-3) 11	4	4.7593.0	Steel plate
12	4	6.1328.0	Base of the machine
13	4	4.1287.0	Distance sleeve
14	5	5.0427.0	Disk
15	1	4.7592.0	Disk
16	6	6.0721.0	Hex. hd. screw M 6 x 20
17	4	6.0727.0	Hex. hd. screw M 8 x 25
18	1	6.0762.0	Hex. hd. screw M 10 x 25
19	4	6.0763.0	Hex. hd. screw M 10 x 30
20	4	6.0768.0	Hex. hd. screw M 12 x 40

Ref.	Qty.	Part No.	Description
1-3) 21	4	6.0783.0	Hex. hd. screw M 12 x 70
4-6) 21	4	6.0794.0	Hex. hd. screw M 12 x 50
1-3) 22	1	6.0783.0	Hex. hd. screw M 12 x 70
4-6) 22	1	6.0781.0	Hex. hd. screw M 16 x 70
23	6	6.0622.0	Washer
24	3	6.0630.0	Washer
25	4	6.0631.0	Washer
26	4	6.0624.0	Washer
27	4	6.0633.0	Washer
28	6	6.0652.0	Spring washer
29	5	6.0654.0	Spring washer
30	4	6.0655.0	Spring washer
1-3) 31	1	6.0655.0	Spring washer
4-6) 31	1	6.0657.0	Spring washer
32	2	6.0681.0	Hex. nut M 5
33	6	6.0682.0	Hex. nut M 6
34	4	6.0685.0	Hex. nut M 10
35	4	6.0686.0	Hex. nut M 12
36	3	6.0610.0	Clamping sleeve dia. 4 x 30
37	1	4.7681.00010	Balance adjustment
38	2	6.0688.0	Hex. nut M 16
39	1	4.7683.0	Pivot bearing
40	1	4.7432.0	Disk
41	2	6.0684.0	Hex. nut M 8
42	2	6.0729.0	Hex. hd. screw M 8 x 35
43	1	4.7089.0	Whip
44	1	6.2216.0	Hex. hd. screw M 6 x 10

- 1) Unit AS 30; 110 psig
- 2) Unit AS 30; 145 psig
- 3) Unit AS 30; 190 psig
- 4) Unit AS 35; 110 psig
- 5) Unit AS 35; 145 psig
- 6) Unit AS 35; 190 psig

Oil tubes, Vent lines  
AS 30, AS 35 type



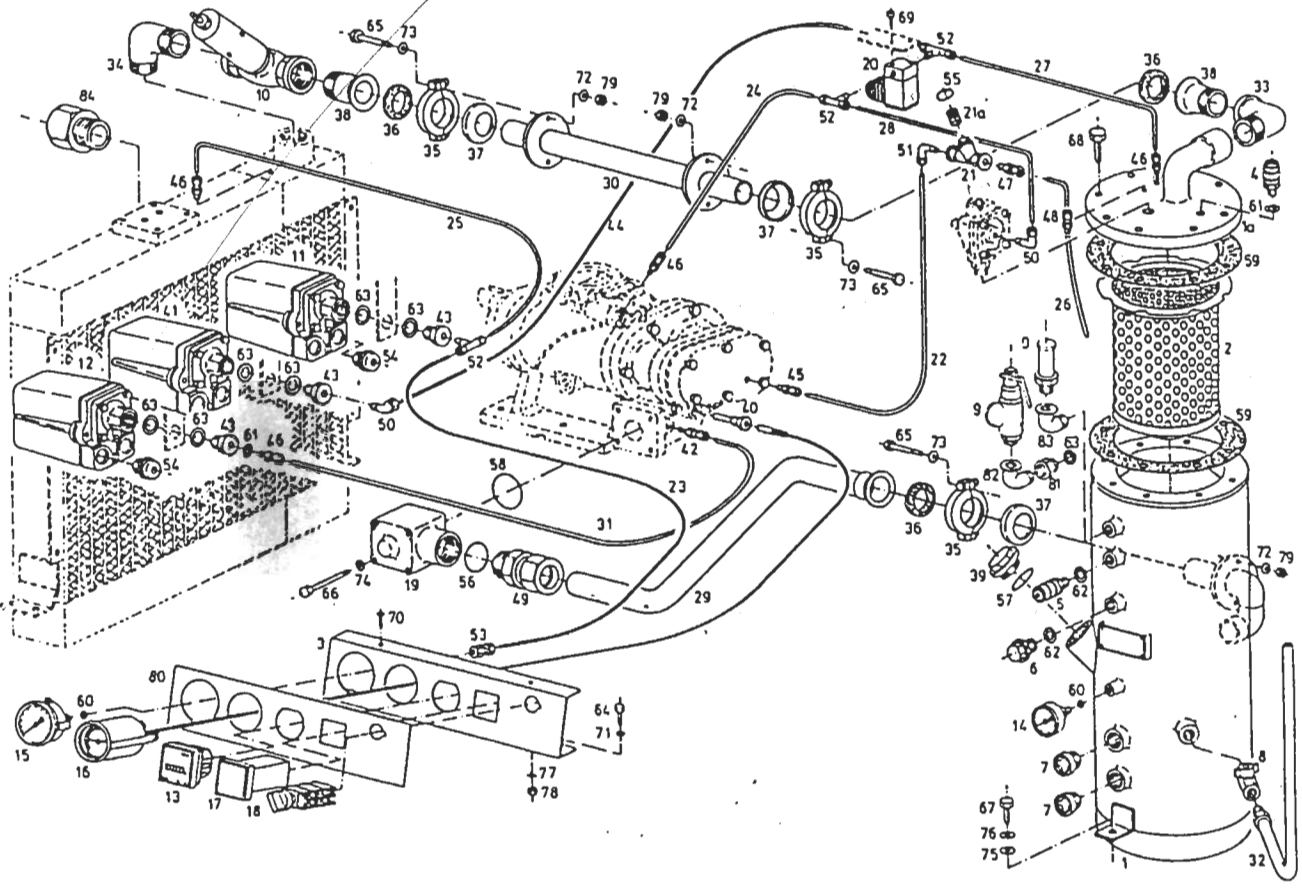
If mounting a nonreturn valve Pos. 16, 21, 6, 23 the oil tube Pos. 11 must be shortened in height by approx. 85 mm = 3 3/8 inches.

Ref.	Qty	Part No.	Description
1	1	4.7340.0	Vent valve G 1/2"
2	1	2.0701.0	Oil stop valve G 1/2 compl. pasted with pos. 17/16 and 18
3	1	4.8865.1	Combination valve
4	1	6.1985.0	Filter cartridge
5	1	4.7386.1	Inlet valve
1) 6	1	8.0283.0	Check valve G 1/2"
7	1	8.0259.0	Ball cock G 1/2"
8	1	6.1909.0	Air filter complete
8a	1	6.2000.0	Filter cartridge
9	1	4.7304.2	Air intake filter support
10	1	6.1972.0	Sinter filter
11	1	4.8198.1	Tube
12	1	6.0864.0	Hose line G 1/2" x 19 11/16"
13	1	8.0806.1	Hose line G 1/2" x 16 8/16"
14	1	9.1079.00010	Hose G 2 1/2" x 16 8/16"
15	2	9.0656.0	Wide-band clamp
1) 16	4	6.1112.0	Angle G 1/2"
17	2	6.1030.1	Fitting G 1/2"
18	4	5.0784.0	Double nipple G 1/2"
19			
20			
1) 21	1	5.0811.0	Thread nipple G 1/2"
22	1	6.0269.0	Pipe fitting G 1/2"
1) 23	1	6.0237.0	Pipe fitting G 1/2"
24	1	6.0257.0	Angle fitting G 1/2"
25	2	5.1474.0	O-ring dia. 16 x 3
26	1	5.1448.0	O-ring dia. 15 x 2
27	2	5.0555.1	Gasket for inlet valve
28	1	6.1524.0	Gasket G 1/2"
29	2	6.0720.0	Hex.hd. screw M 6 x 15
30	4	6.2407.0	Cylinder screw with inside hex. M 6 x 85
31	4	5.0497.0	Stud M 8 x 55

Ref.	Qty	Part No.	Description
32	2	6.0682.0	Hex. nut M 6
33	4	6.0684.0	Hex. nut M 8
			1) Compressor Unit AS 30, 190 psig AS 35, 190 psig (and Quadro)

Control tubes  
Compressed air tubes  
AS 30/35 type

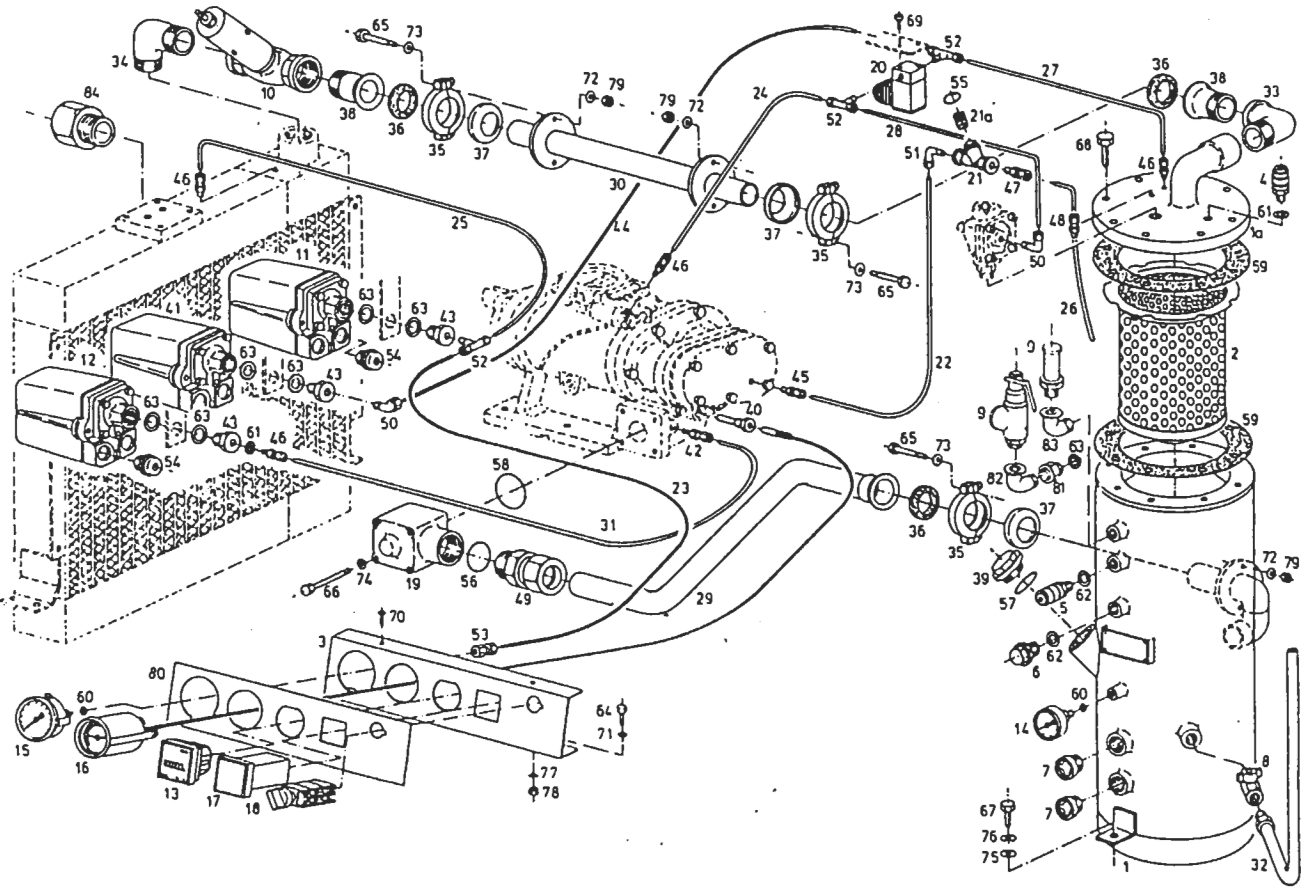
DIAPHRAGM INSIDE  
7.14 71.0



Ref.	Qty.	Part No.	Description
1	1	3.6113.0	Tank 8 gal. 220 psig compl. with 1a
1a	1	4.7234.2	Cover
2	1	6.1963.0	Oil separator cartridge
3	1	4.7453.2	Instrument panel
4	1	9.0843.0	Hose coupling G 1/4
5	1	9.0844.0	Hose coupling G 3/8
6	1	6.0501.0	Locking screw G 3/8
7	2	6.0105.0	Oil sight glass 3/4
8	1	8.0259.0	Ball cock G 1/2
1) 9	1	8.2055.0	Safety valve G 1/4
2) 9	1	8.2067.0	Safety valve G 1/2
3) 9	1	8.2071.0	Safety valve G 1/4
10	1	4.7333.0	Minimum pressure check valve G 1 1/4
11	1	7.0220.0	Pressure switch 115 psig
11	1	7.0221.0	Pressure switch 230 psig
12	1	7.0219.0	Pressure switch
13	1	7.0784.0	Hour meter
14	1	8.0018.0	Pressure gauge 0-360/220 psig
15	1	8.0137.0	Pressure gauge 0-145/110 psig
15	1	8.0136.0	Pressure gauge 0-230/145 psig
15	1	8.0138.0	Pressure gauge 0-230/190 psig
16	1	8.0197.0	Distance thermometer
17	1	7.1092.00020	Malfunction relay
18	1	7.2778.1	Switch
19	1	4.7392.0	Check valve
20	1	2.0711.0	Solenoid valve compl. pasted with Pos. 50 and 52
21	1	8.0381.0	Dirt trap G 1/4
21a	1	8.0394.0	Dirt trap strainer
22	1	9.0616.0	Control tube dia. 1/4"x13 1/2"
23	1	9.0616.0	Control tube dia. 1/4"x15 3/8"
24	1	9.0616.0	Control tube dia. 1/4"x15 3/8"

Ref.	Qty.	Part No.	Description
25	1	9.0616.0	Control tube dia. 1/4"x29 1/8"
26	1	4.8195.0	Suction tube dia. 1/4"
27	1	9.0616.0	Control tube dia. 1/4"x9 1/4"
28	1	9.0616.0	Control tube dia. 1/4"x10 1/4"
29	1	4.4340.0	Air tube
30	1	4.8194.0	Air tube
31	1	9.0616.0	Control tube dia. 1/4"x21 5/8"
32	1	8.0890.0	Hose line DN 1/2"x29 1/2"
33	1	5.8085.0	Angle G 1 1/4
34	1	6.1097.0	Angle G 1 1/4
35	3	5.1124.0	Tension clamp complete
36	3	5.1390.0	Gasket ring
37	3	5.1120.0	Support for gasket ring
38	2	4.8192.0	Sleeve
39	1	6.0519.0	Locking screw G 1 1/4
40	1	5.0929.0	Protection sleeve G 3/8
41	1	7.0218.0	Pressure switch
42	1	6.1716.0	Pipe fitting M 12 x 1.5
43	3	5.0846.0	Reducing socket G 1/2 x G 1/8
44	1	9.0616.0	Control tube 1/4"x22 1/8"
45	1	6.0231.0	Pipe fitting R 1/8
46	4	6.0246.0	Pipe fitting R 1/8
47	1	6.0234.0	Pipe fitting R 1/4
48	1	4.8199.0	Pipe fitting R 1/4
49	1	6.0241.0	Pipe fitting G 1 1/4
50	2	6.0266.0	Angle fitting R 1/8
51	1	4.7937.0	Angle fitting R 1/4
52	3	6.0344.0	T Pipe fitting R 1/8
53	1	6.0390.0	Pipe fitting G 1/4
54	3	7.0673.0	Plug PG 16
55	1	5.1443.0	O-ring dia. 20 x 2.5
56	1	5.1468.0	O-ring dia. 38 x 2.5
57	1	5.1455.0	O-ring dia. 47 x 2
58	1	5.1459.0	O-ring dia. 55 x 2

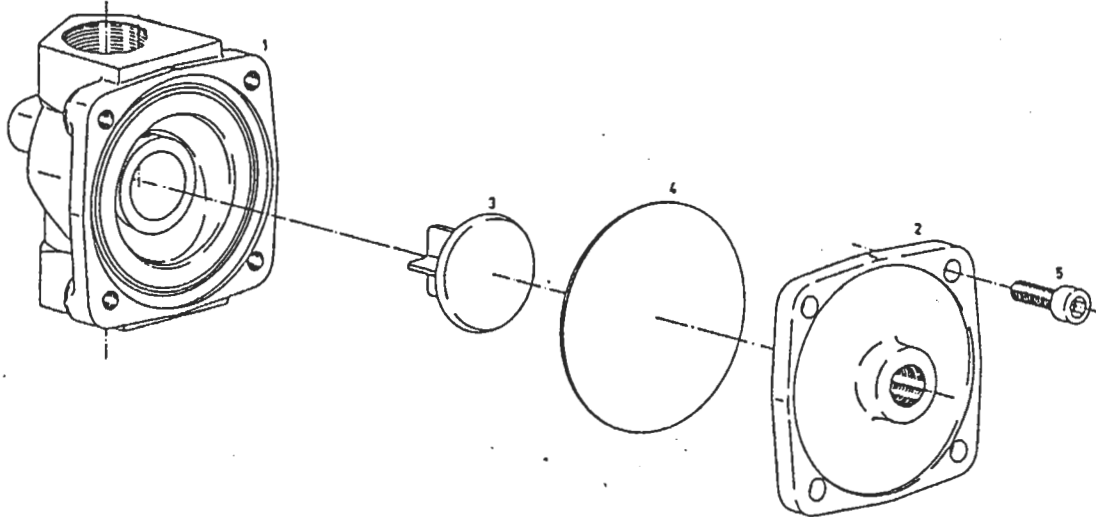
Control tubes  
Compressed air tubes  
AS 30/35 type



Ref.	Qty.	Part No.	Description
59	2	5.0556.0	Gasket for tank
60	2	6.0470.0	Gasket for pressure gauge G 1/4
61	2	6.0432.0	Gasket G 1/4
62	3	6.1521.0	Gasket G 3/8
63	7	6.0438.0	Gasket G 1/2
64	2	6.0800.0	Hex.-head screw M 5 x 15
65	6	6.2218.0	Hex.-head screw M 6 x 65
66	4	6.0735.0	Hex.-head screw M 8 x 70
67	2	6.0806.0	Hex.-head screw M 10 x 25
68	8	6.0759.0	Hex.-head screw M 16 x 45
69	2	6.0890.0	Fillister head screw M 4 x 8
70	2	6.0861.0	Countersunk screw M 5 x 10
71	2	6.0621.0	Washer
72	6	6.0622.0	Washer
73	6	6.0630.0	Washer
74	4	6.0623.0	Washer
75	2	6.0624.0	Washer
76	2	6.0654.0	Spring washer
77	2	6.0660.0	Toothed lock washer
78	2	6.0681.0	Hex. nut M 5
79	6	6.2430.0	Hex. nut M 6
80	1	5.2270.0	Foil label
1,4) 81	1	6.3201.0	Reducing socket G 1/2 x G 1/4
1,3) 82	1	6.3231.0	Angle 1/4 NPT
4) 83	1	6.3208.0	Angle 1/2 NPT
84	1	4.4445.0	Adapter G 1 1/4 x 1 1/4 NPT

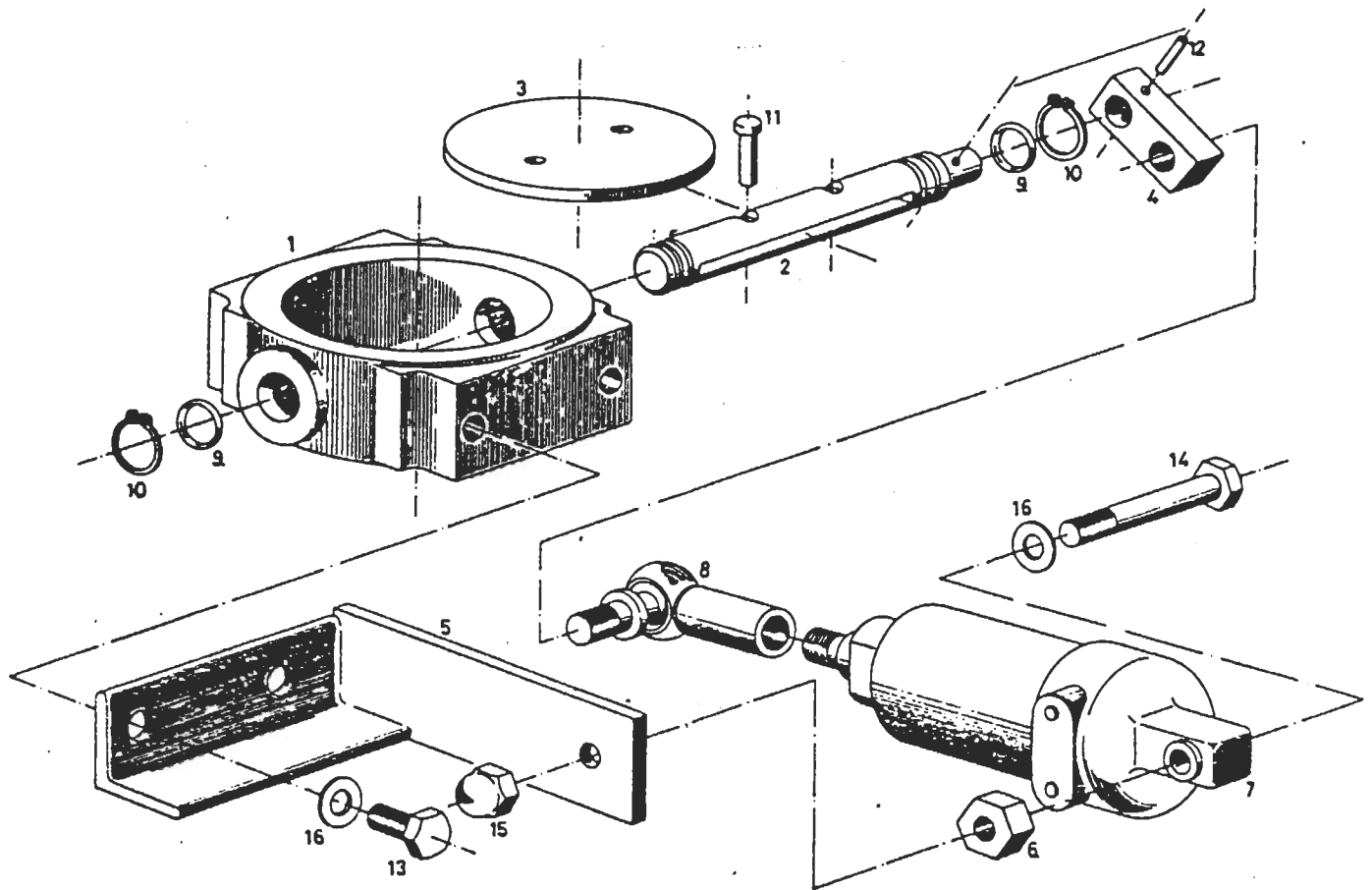
Ref.	Qty.	Part No.	Description
			1) Compressor unit AS 30/35 110 psig
			2) Compressor unit AS 30/35 145 psig
			3) Compressor unit AS 30/35 190 psig
			Part 21a included in the complete oil separating cartridge set No. 6.2011.0

Vent valve  
4.7340.0



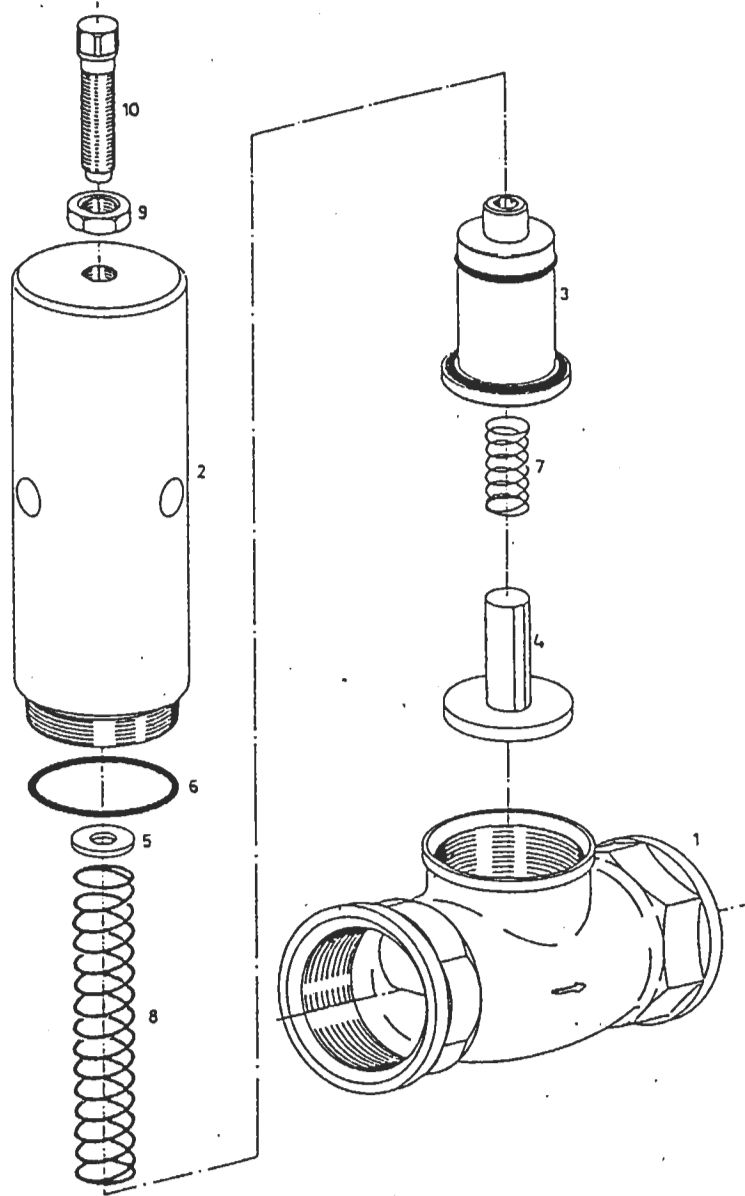
Ref.	Qty	Part No.	Description
1	1	5.0996.0	Valve body
2	1	5.0997.0	Cover
3	1	4.9026.0	Piston complete
4	1	5.0999.0	Diaphragm
5	4	6.2408.0	Cylinder screw with inside hex. M 5 x 12

Inlet valve  
4.7386.1



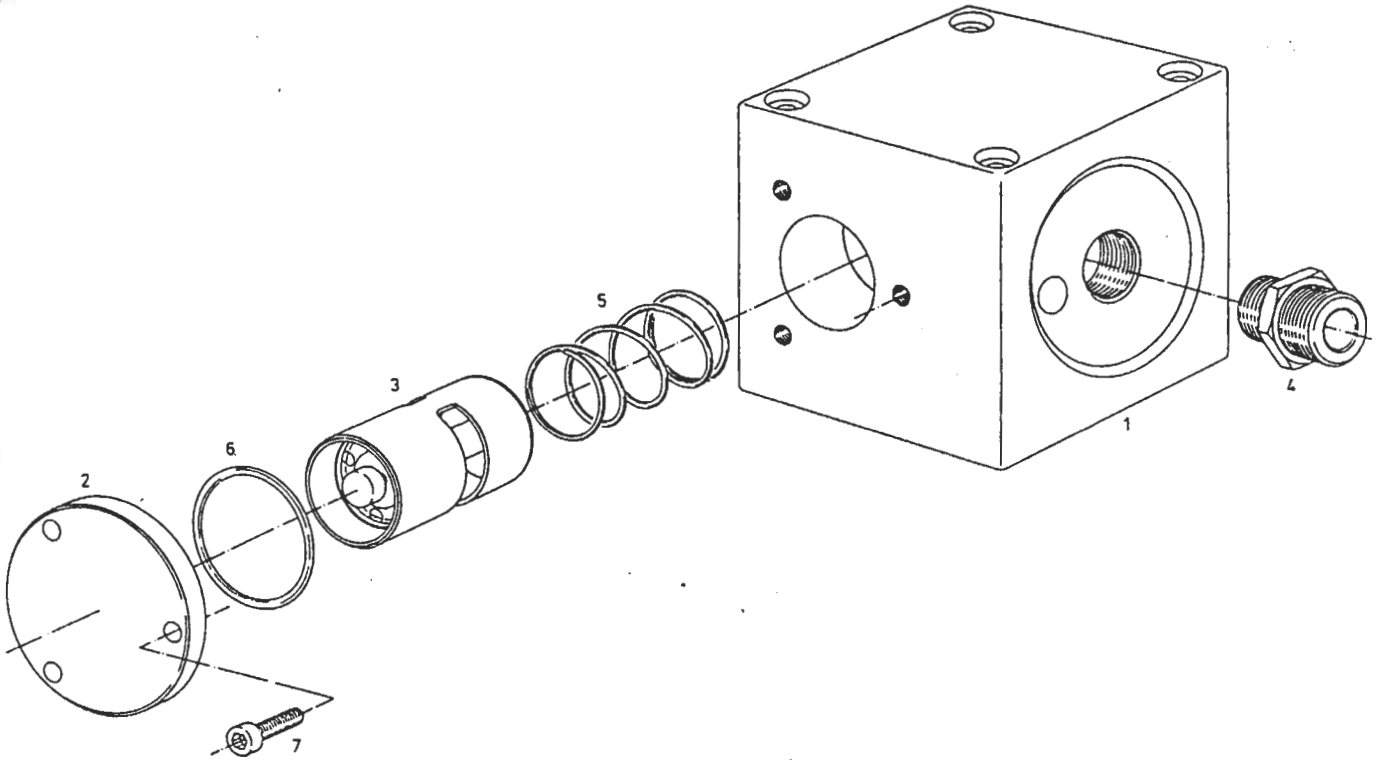
Ref.	Qty	Part No.	Description
1	1	4.8920.3	Valve body
2	1	4.8962.1	Shaft
3	1	5.0392.1	Disk
4	1	4.8964.0	Lever
5	1	4.8960.0	Support
6	1	4.8965.0	Hex. nut
7	1	7.0486.0	Working cylinder ✓
8	1	7.0489.0	Angle joint
9	2	5.1465.0	O-ring dia 10x1
10	2	6.0541.0	Guard ring
11	2	4.7563.0	Rivet with button head
12	1	6.0609.0	Clamping sleeve
13	2	6.0720.0	Hex. hd. screw M 6 x 15
14	1	6.0723.0	Hex. hd. screw M 6 x 45
15	1	6.0701.0	Cap nut M 6
16	3	6.0622.0	Washer

Minimum pressure  
check valve  
4.7333.0



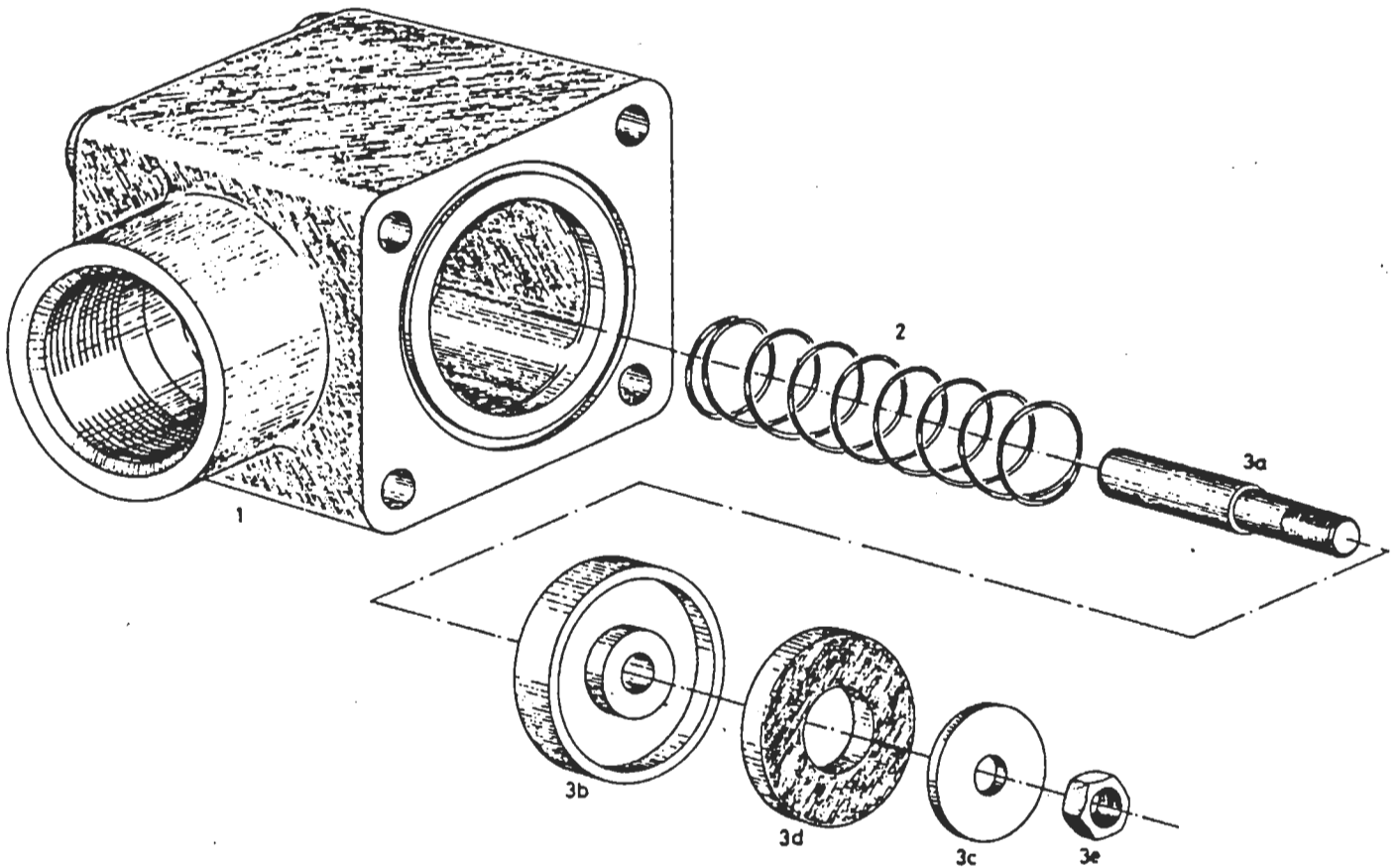
Ref.	Qty	Part No.	Description
1	1	4.8579.0	Valve body G 1 1/4
2	1	4.8580.0	Cylinder
3	1	4.9025.0	Piston complete
3a	1	4.8534.0	Piston
4	1	4.9016.0	Valve disk complete
5	1	6.2372.0	Disk
6	1	5.1468.0	O-Ring dia 38 x 2,5
7	1	5.0643.0	Compression spring
8	1	5.0646.0	Compression spring
9	1	6.0685.0	Hex. nut M 10
10	1	6.0946.0	Square-head bolt M 10 x 35

Combination valve  
4.8865.1



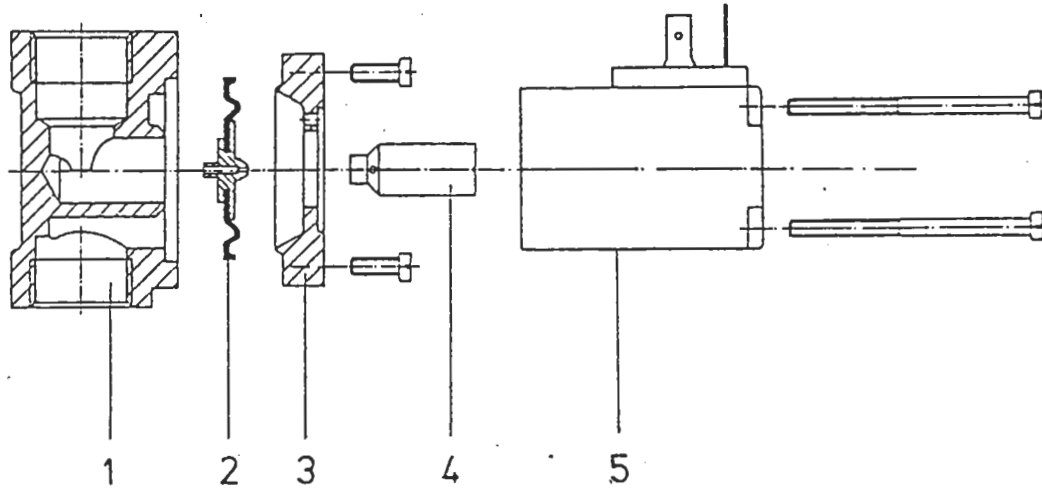
Ref.	Qty	Part No.	Description
1	1	4.8862.0	Valve body
2	1	4.8875.0	Cover
3	1	7.0399.0	Actuating piston with working element
4	1	5.0775.0	Double nipple
5	1	5.0636.0	Compression spring
6	1	5.1445.0	O - ring dia. 35x2
7	3	6.2406.0	Cylinder screw with inside hex. M5 x 16

Check valve  
4.7392.0



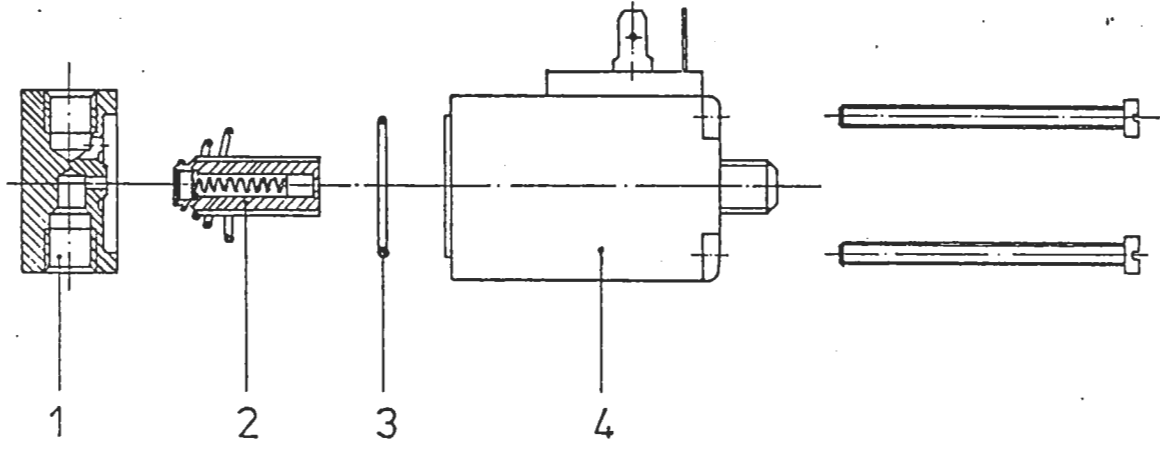
Ref.	Qty	Part No.	Discription
1	1	4.8903.0	Valve body
2	1	5.0616.0	Compression spring
3	1	4.9010.0	Valve disk complete
3a	1	4.8904.1	Guide bolt
3b	1	4.8905.2	Disk
3c	1	4.8907.1	Disk
3d	1	5.0563.1	Gasket
3e	1	6.0684.0	Hex. nut M 8

Oil stop valve  
2.0701.0



Ref.	Qty.	Part No.	Description
1			Bottom of casing compl. pasted with fitting
2		7.1340.0	Diaphragm complete
3			Flange
4		7.0343.0	Core complete
5		7.1958.0	Coil complete

Control valve  
2.0711.0



Ref.	Qty	Part No.	Description
1			Casing
2		7.0387.0	Armature
3		7.0344.0	O-Ring 25 x 1,5 Viton
4		7.1372.0	Coil

## SECTION 3

## RECOMMENDED SPARE PARTS LIST

Model AS 30/35

DESCRIPTION	Part No.	Qty per unit	LOCATION		Recommended Quantities		
			Section	Ref.	A	B	C
Oil filter cartridge	6.1985.0	1	Oil tubes, vent lines	3	1	2	3
Oil separating cartridge	6.2011.0	1			1	1	2
Complete Set consists of							
- Oil separator cartridge	6.1963.0	1	Control tubes	2			
- Gasket for tank	5.0556.0	2	compressed air tubes	59			
- O-Ring dia. 20x2,5	5.1443.0	1	Control tubes	55			
- Dirt trap strainer	8.0394.0	1	Compressed air tubes	21a			
Air inlet filter cartridge	6.2000.0	1	Control tubes				
Filter mat	6.1943.0	1	compressed air tubes				
V-belt set AS 30/110 psig	6.2506.0	1	Oil tubes, vent lines	8a	2	3	4
V-belt set AS 30/145 psig	6.2506.0	1	Frame, casing	10	2	3	4
V-belt set AS 30/190 psig	6.2507.0	1	Driving system	7	1	1	2
V-belt set AS 35/110 psig	6.2509.0	1	Driving system	7	1	1	2
V-belt set AS 35/145 psig	6.2501.0	1	Driving system	7	1	1	2
V-belt set AS 35/190 psig	6.2501.0	1	Driving system	7	1	1	2
O-Ring dia. 16 x 3	5.1474.0	2	Oil tubes, vent lines	25	1	1	2
O-Ring dia. 15 x 2	5.1448.0	1	Oil tubes, vent lines	26	1	1	2
O-Ring dia. 38 x 2,5	5.1468.0	1	Control tubes, Compressed air tubes	56	1	1	2
O-Ring dia. 47 x 2	5.1455.0	1	Control tubes Compressed air tubes	57	1	1	2
O-Ring dia. 55 x 2	5.1459.0	1	Control tubes, compressed air tubes	58	1	1	2
O-Ring dia. 10 x 1	5.1465.0	2	Inlet valve	9	1	1	2
O-Ring dia. 38 x 2,5	5.1468.0	1	Minimum pressure check valve	6	1	1	2
O-Ring dia. 35 x 2	5.1445.0	1	Combination valve	6	1	1	2
Gasket for inlet valve	5.0555.1	2	Oil tubes, vent lines	27	1	1	2

## SECTION 3

## RECOMMENDED SPARE PARTS LIST

## Model AS 30/35

DESCRIPTION	Part No.	Qty per unit	LOCATION		Recommended Quantities		
			Section	Ref.	A	B	C
Gasket G 1/2	6.1524.0	1	Oil tubes, vent lines	28	1	1	2
Gasket ring	5.1390.0	3	Control tubes compressed air tubes	36	1	1	2
Gasket for tank	5.0556.0	2	Control tubes compressed air tubes	59	1	1	2
Gasket for pressure gauge G 1/4	6.0470.0	2	Control tubes compressed air tubes	60	1	1	2
Gasket G 1/4	6.0432.0	2	Control tubes, Control air tubes	61	1	1	2
Gasket G 3/8	6.1521.0	3	Control tubes Control air tubes	62	1	1	2
Gasket G 1/2	6.0438.0	6	Control tubes Control air tubes	63	1	1	2
Diaphragm	5.0999.0	1	Vent valve	4	1	1	2
Diaphragm	7.1340.0	1	Oil stop valve	2	1	1	2
Safety pressure switch	7.0219.0	1	Control tubes, Compressed air tubes	12	0	1	1
Pressure switch 115 psig	7.0220.0	1	Control tubes Compressed air tubes	11	0	1	1
Pressure switch 230 psig	7.0221.0	1	Control tubes Compressed air lines	11	0	1	1
Piston complete	4.9026.0	1	Vent valve	3	1	1	2
Piston complete	4.9025.0	1	Minimum pressure check valve	3	1	1	2
Valve disk complete	4.9016.0	1	Minimum pressure check valve	1	1	1	2
Valve disk complete	4.9010.0	1	Check valve	3	1	1	2
Compression spring	5.0616.0	1	Check valve	2	0	1	2
Compression spring	5.0643.0	1	Minimum pressure check valve	7	0	1	1
Compression spring	5.0646.0	1	Minimum pressure check valve	8	0	1	1

## SECTION 3

## RECOMMENDED SPARE PARTS LIST

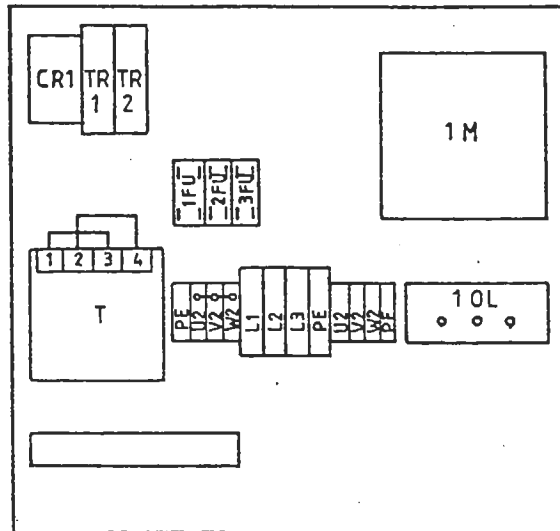
Model AS 30/35

DESCRIPTION	Part No.	Qty per unit	LOCATION		Recommended Quantities		
			Section	Ref.	A	B	C
Compression spring	5.0636.0	1	Combination valve	5	0	1	1
Working element	7.0399.0	1	Combination valve	3	1	1	2
Vent valve complete	4.7340.0	1	Oil tubes, vent lines	1	0	0	1
Inlet valve	4.7386.0	1	Oil tubes, vent lines	5	0	0	1
Minimum pressure check valve	4.7333.0	1	Control tubes Compressed air tubes	10	0	0	1
Combination valve	4.8865.1	1	Oil tubes, vent lines	3	0	0	1
Oil stop valve	2.0701.0	1	Oil tubes, vent lines	2	0	0	1
Control valve	2.0711.0	1	Control tubes, compressed air tubes	20	0	0	1

**RECOMMENDED SPARE PARTS LIST  
FOR ELECTRICAL EQUIPMENT**

Model AS 30

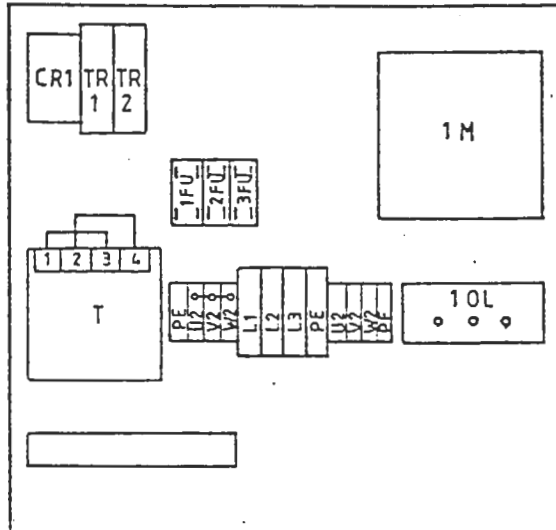
Direct on-line start 230 V or 460 V



DESCRIPTION		Part No.	Qty-per unit	LOCATION USE	Recommended Quantities		
					A	B	C
1M	Motor starter with Auxiliary switch	7.3409.0	1	Control box	0	1	1
				Control box	0	1	1
10L	Overload relay motor	7.3458.0	1	Control box	0	1	1
1	Base	7.3466.0	1	Control box	0	1	1
1,2,3FU	Fuse	7.3300.0	3	Control box	0	1	1
T	Transformer	7.2220.0	1	Control box	0	1	1
CR1	Control relay	7.2066.0	1	Control box	0	1	1
TR2	Time delay relay (delay off)	7.0467.0	1	Control box	0	1	1
TR1	Time delay relay (released start)	7.0466.0	1	Control box	0	1	1

428.590.1  
i.e.

RECOMMENDED SPARE PARTS LIST  
FOR ELECTRICAL EQUIPMENT  
Model AS 35  
Direct on-line start 230 V or 460 V



428.590.1

DESCRIPTION		Part No.	Qty-per unit	LOCATION USE	Recommended Quantities		
					A	B	C
1M	Motor	7.2063.0	1	Control box	0	1	1
10L	Overload relay motor	7.3459.0	1	Control box	0	1	1
1	Base	7.3466.0	1	Control box	0	1	1
1,2,3FU	Fuse	7.3300.0	3	Control box	0	1	1
T	Transformer	7.2220.0	1	Control box	0	1	1
CR1	Control relay	7.2066.0	1	Control box	0	1	1
TR2	Time delay relay (delay of)	7.0467.0	1	Control box	0	1	1
TR1	Time delay relay (released start)	7.0466.0	1	Control box	0	1	1