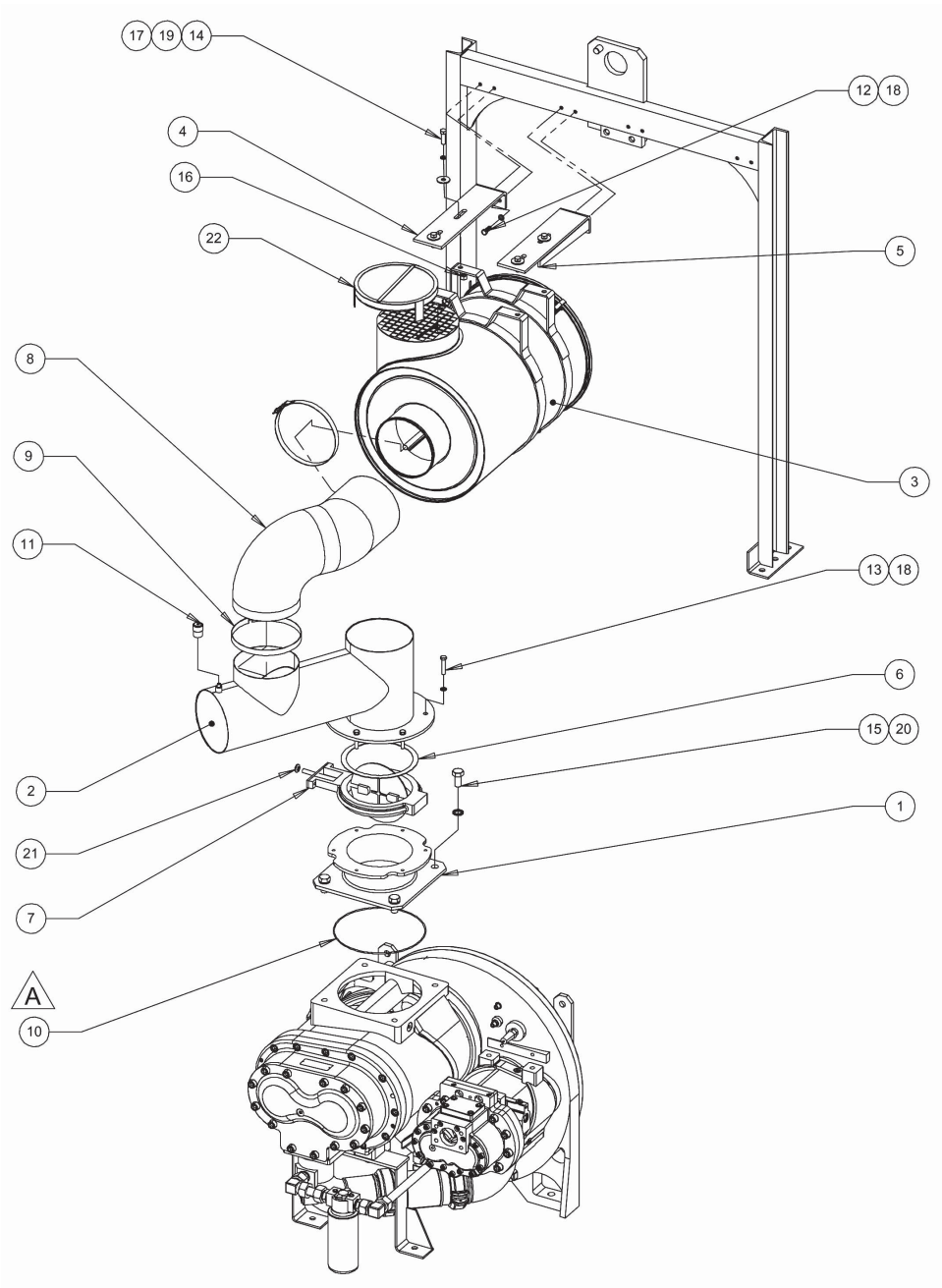


۱۳۶۲
جهان کمپرسور



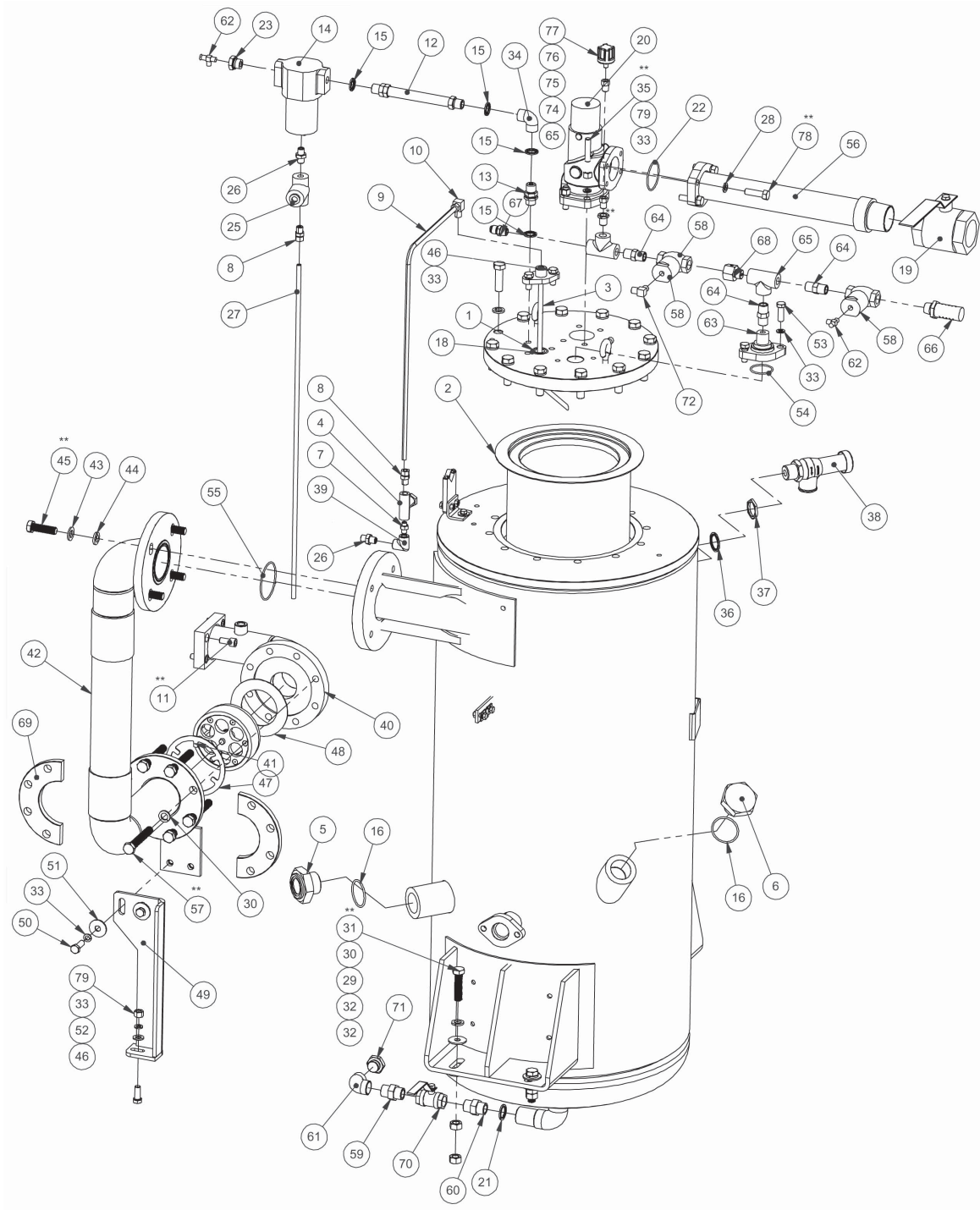
Parts Manual



AIR INLET SYSTEM

AIR INLET SYSTEM

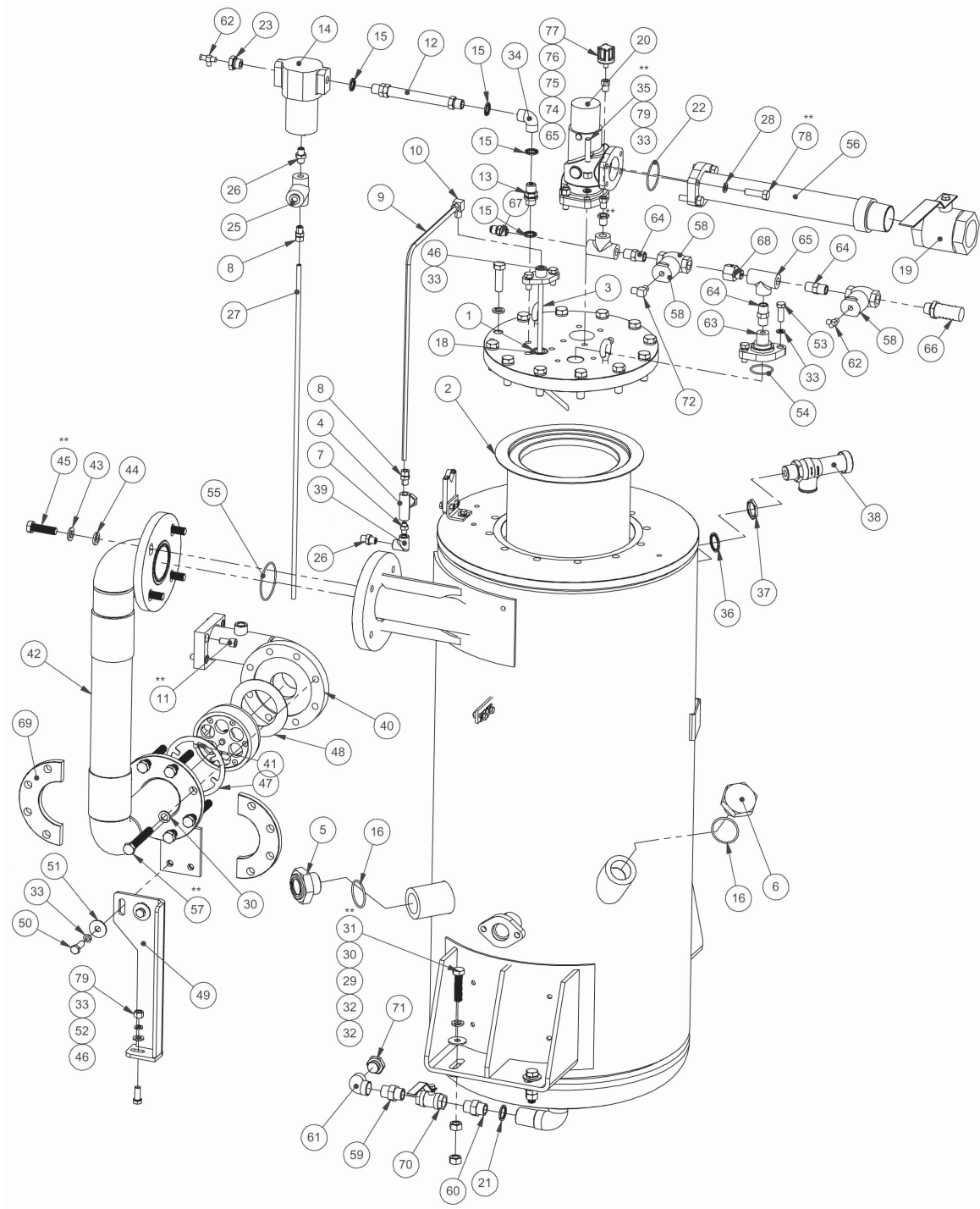
Part No.	Description	Qty.	Part Code
1	ADAPTER AIR INLET	1	035302336
2	AIR INLET DUCT	1	035301901
3	AIR FILTER ASSEMBLY 1390 CFM	1	B004700730006
4	AIR FILTER MTG BKT - BOTTOM	1	035300808
5	AIR FILTER MTG BRKT - TOP	1	035300934
6	GASKET C/CASE TO CYL 6CD4UC	2	000447490
7	VALVE ASSEMBLY; BUTTERFLY; 8"	1	220217480
8	SUCTION HOSE END CUFFS - 8 INCH	1	035301998
9	SS T BOLT CLAMP; JT 6A20-DIA213	2	B005004300005
10	O-RING, TANK-RTR HSG, EN 102	1	990402930
11	INDICATOR; AIR FILTER CLOG	1	220413130
12	BOLT HEX M10X30 8.8 ZYP 5-8M	4	000906145
13	BOLT HEX M10X60 8.8 ZYP 5-8M	6	000906151
14	BOLT HEX M12X40 8.8 ZYP 5-8M	4	000906185
15	BOLT HEX M20X40 8.8 ZYP 5-8M	4	000906241
16	NUT HEX M12	4	000948012
17	WASHER PLAIN M12	4	000996012
18	WASHER SPRING M10	10	000996110
19	WASHER SPRING M12	4	000996112
20	WASHER SPRING M20	4	000996120
21	CROMET DIA 20	1	035400295
22	A/E FILTER CAP	1	035302951



DISCHARGE SYSTEM

DISCHARGE SYSTEM

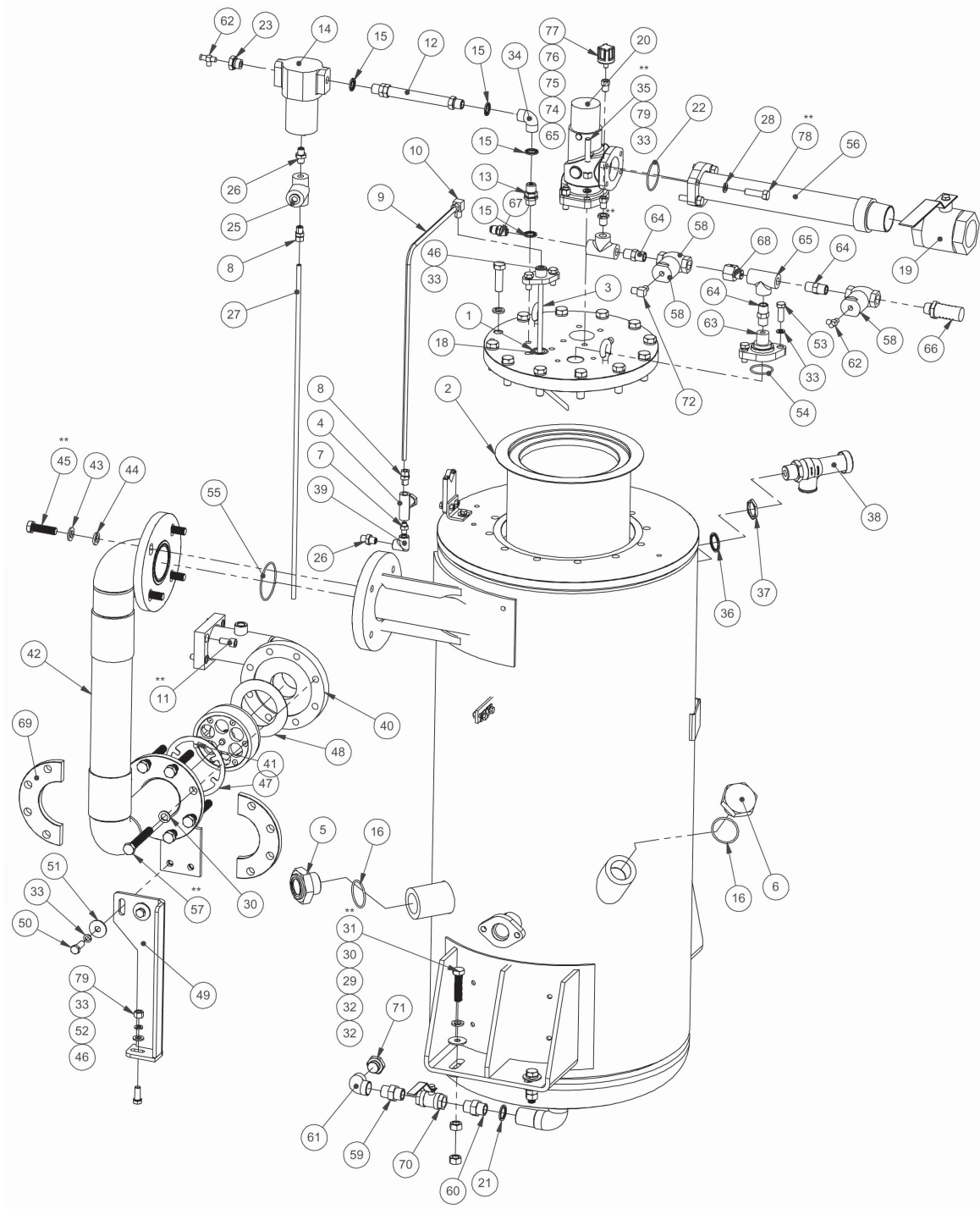
Part No.	Description	Qty.	Part Code
1	SEPERATOR TANK DS 1200-325 V2	1	035302194
2	AIR OIL SEPERATOR	1	B006700770006
3	OIL RETURN LINE ASSEMBLY	1	035300559
4	STAINER ASSY.	1	A010016
5	OIL SIGHT GLASS 1-1/2" BSP	1	015306517
6	OIL FILL CAP 1-1/2" BSP	1	015402634
7	ORIFICE, OIL RETURN	1	035400625
8	COUPLING; TMS; 3/8"X1/4"NPT	2	22047683B
9	PIPE TANK TO OIL SIGHT GLASS	1	035400369
10	ELBOW; TMS; 3/8" x 1/4" NPT	1	22047681C
11	HEX SOCKET HEAD BOLT, M12x25	4	000983142
12	STRAINER PIPE ASSY_2 STAGE MOD	1	035301647
13	END CONN MOISTER DT1100-350T2	1	035301760
14	PRE FILTER (PF0037 A) GEM	1	B004403900002
15	1/2 BSP BONDED SEAL WASHER	4	000959387
16	O-RING - 62.5x55.5x3.5	2	010451120
17	O RING DIA 69.44 X DIA 3.53	2	010453920
18	O-RING ID 35.2 x 30 x 2.6	1	220412320
19	2" NPT15FCSBVS	1	011407700
20	MPV 2INC 1100-300V2/1200-325V2	1	B009300800002
21	3/4BSP BONDED SEAL WASHER VITON	1	000959438
22	O RING ID60x3DIA	1	030449650
23	1-2 BSP MALE FEMALE ADAPTER	1	B009606360016
24	ELBOW MALE 1-4 INBSP WTH ORING	1	B009606360008
25	DRAIN VALVE ASSY -1/4"	1	B139201
26	ADAPTER; HOSE; 1/4" BSP X 1/4" NPT	2	220370680
27	DRAIN TUBE - 1200/325	1	035400494



DISCHARGE SYSTEM

DISCHARGE SYSTEM

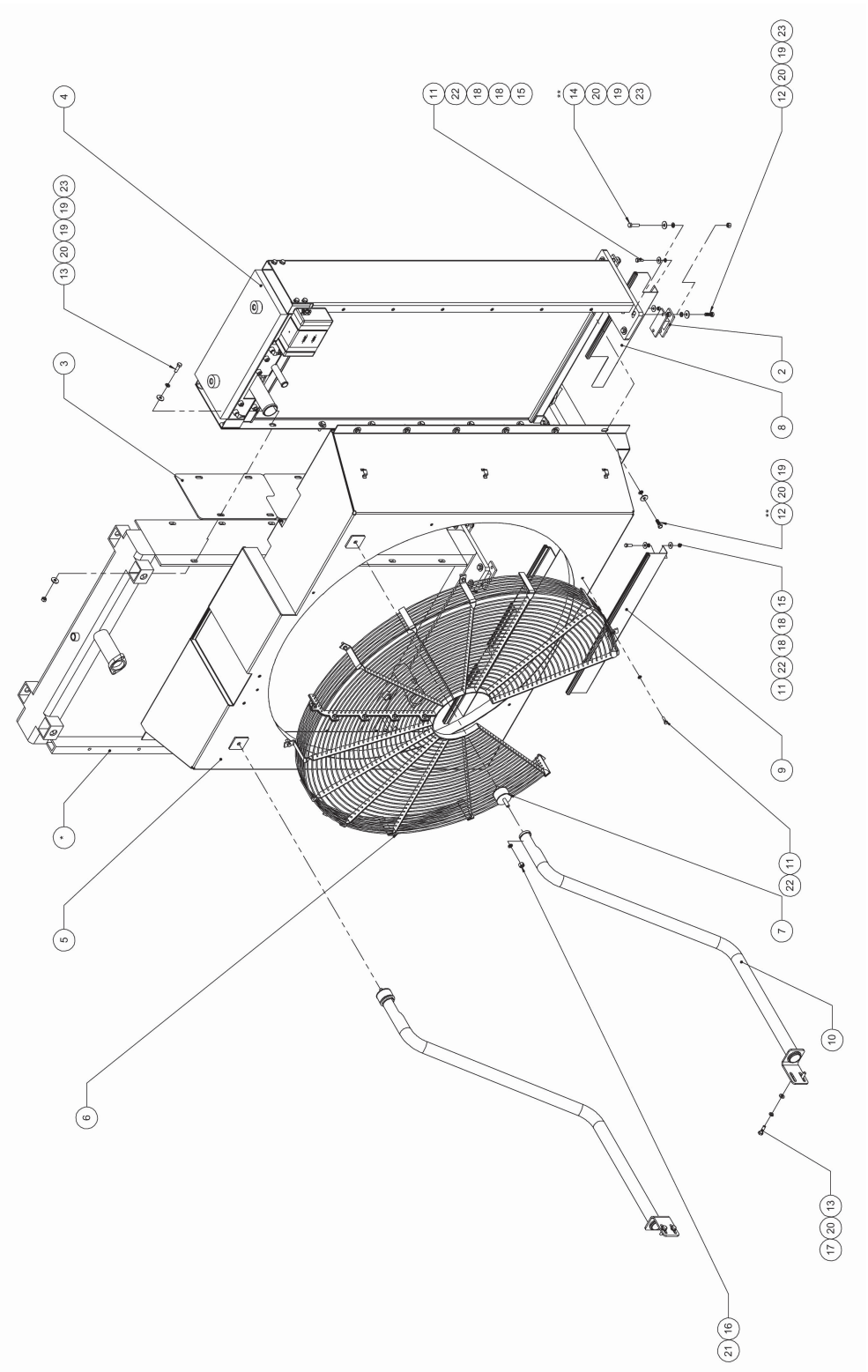
Part No.	Description	Qty.	Part Code
28	WASHER SPRING RCS 1/2"	4	000996205
29	PLAIN WASHER, M16	8	000996016
30	SPRING WASHER M 16	12	----
31	BOLT HEX M16 x 65	4	000906219
32	NUT HEX M16	8	000948016
33	WASHER, SPRING, M10	11	000996110
34	1/2 INCH BSP FEMALE 90 ADAPTER	1	B010506360036
35	STUD M12X54	4	000514550
36	1 BSP BONDED SEAL WASHER VITON	1	000959439
37	LOCK NUT 1" BSP	1	990402330
38	SAFETY VALVE _ DT 1100-350 T2	1	B012805340042
39	ELBOW; PIPE; 90'; 1/4"NPT	1	22047677A
40	ADAPTER DCV (1200-350)	1	035303247
41	DISCHARGE CHECK VALVE-1200/325	1	035400469
42	DISCHARGE PIPE ASSY.	1	035303246
43	WASHER PLAIN M20	4	000996016
44	M18 SPRING WASHER	4	000996116
45	M16X55 8.8 ZYP 5-8 M	4	000906217
46	BOLT HEX - M12X30	3	000906183
47	GASKET DCV	1	030459560
48	GASKET, 3 INCH DCV	1	035400257
49	DIS HOSE SUPPORT BKT-1200-350	1	035303341
50	M12 X 35 HEX BOLT	2	000906184
51	WASHER, PLAIN M12	2	000996012
52	M12 PLAIN WASHER	1	000996060
53	M12 X 35 HEX BOLT	2	000906184
54	O-RING ID 45 x 51 x 3	1	035400047



DISCHARGE SYSTEM

DISCHARGE SYSTEM

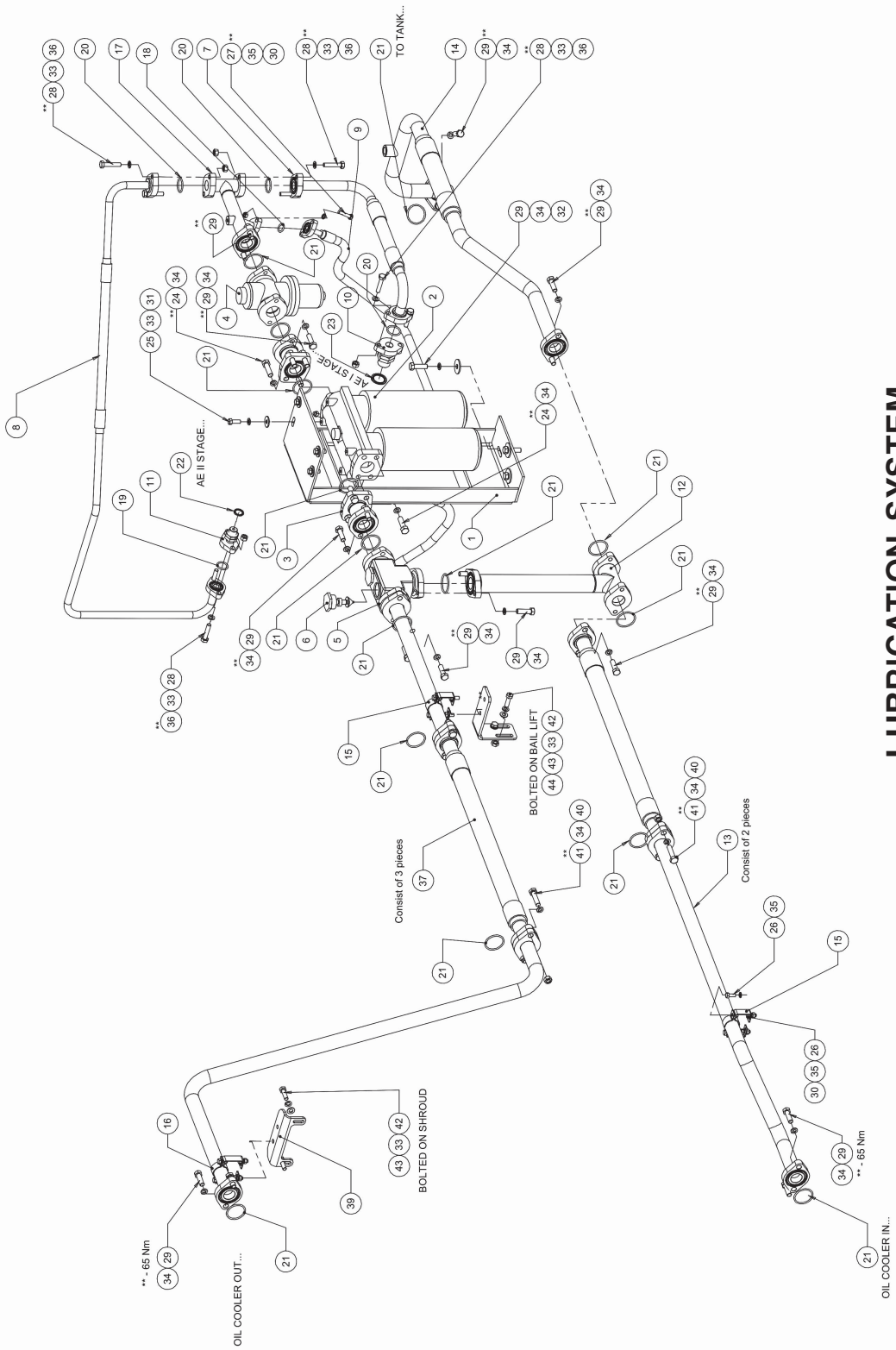
Part No.	Description	Qty.	Part Code
55	O-RING 80 ID X 3.0 MM	1	015402871
56	OUTLET MANIFOLD	1	035302818 (SKD) 035303411 (TRL)
57	M16X110 8.8 ZYP 5-8 M	8	000906226
58	BLOWDOWN VALVE 1/2"	2	A010042
59	NIPPLE; HEX; 3/4"NPT	1	22037903D
60	ADAPTER; HOSE; 3/4"BSPX3/4"NPT	1	220371670 (220460450)
61	3/4" BSP FEMALE ELBOW	1	22047677D
62	RUN TEE 1/4" NPT	2	000959107
63	FLANGE ASSY BDV	1	035303399
64	NIPPLE; HEX; 1/2"NPT	4	22037903C
65	TEE PIPE 1/2 " NPT	2	22047680C
66	SILENCER; BLOWDOWN; 1/2NPT"	1	035400226
67	CONN. 37FL/M 7/8"UNFx1/2"NPT	1	22343137C
68	ADAPTER G 1/2 WITH 5MM ORIFICE	1	015401815
69	ROUND FLANGE-DCV	2	035400824
70	3/4"NPT 15 FCS BVS	1	011407670
71	HEX PLUG - 3/4" BSP	1	015402654
72	HOSE ADAP.90DEG1/4" NPTx1/4" BSP	1	000959083
73	OUTLET MANIFOLD ASSY1100-300V2	1	035302169
74	BUSH; REDU; ADAP; 1/2"X1/4"NPT	1	22037897E
75	BUSH; REDU; ADAP; 1/4"X1/8"NPT	1	22037897A
76	COM LOW OIL PRESS SWITCH 6 BAR	1	038400033
77	BOOT FOR PRESSURE SWITCH	1	038400036
78	BOLT HEX 1/2"UNCX1 3/4"	4	000907249
79	M12 WELD NUT	7	000948012



COOLING SYSTEM

COOLING SYSTEM

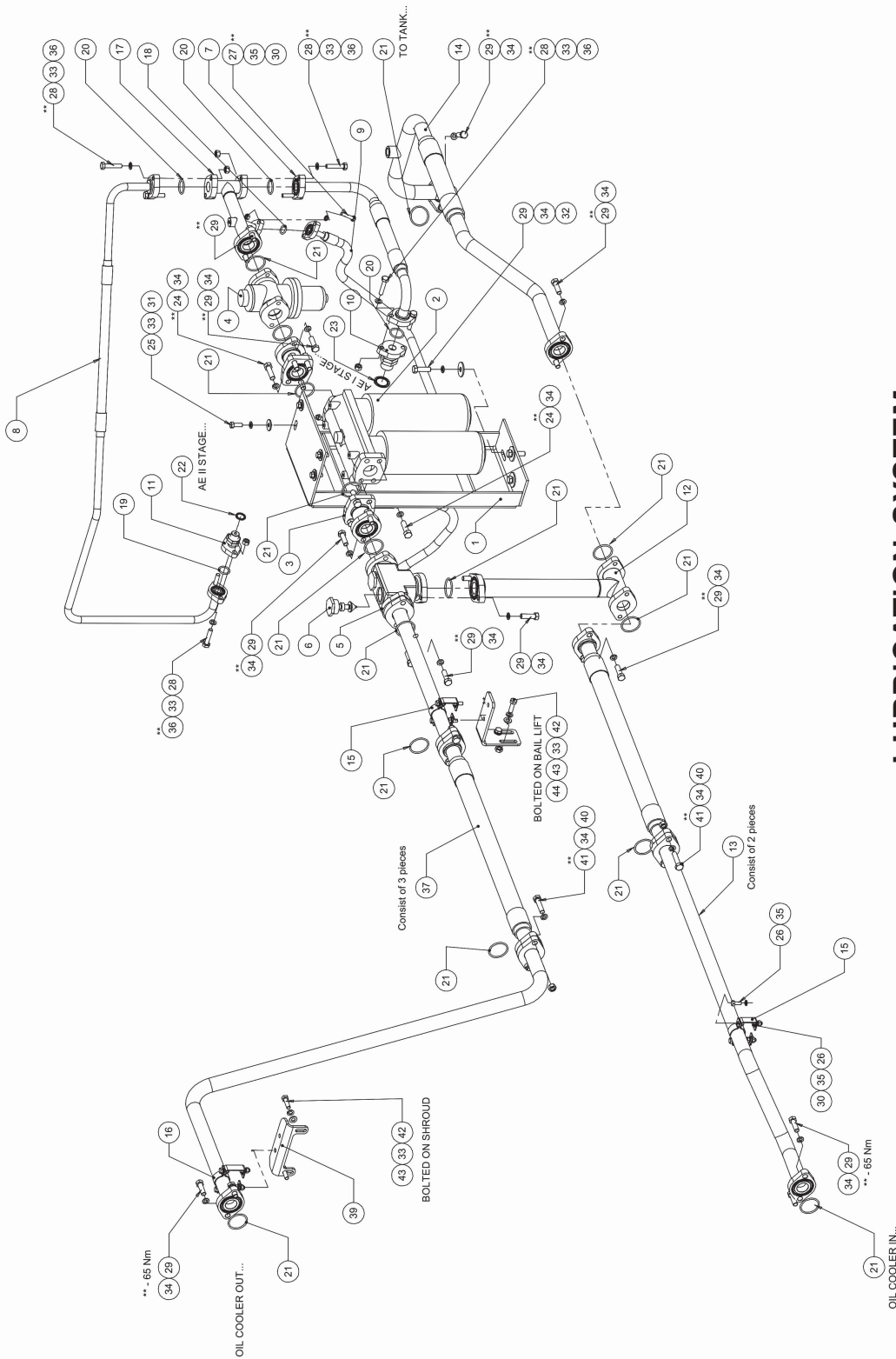
Part No.	Description	Qty.	Part Code
1	OIL COOLER-ALU-1200/325 PUSHER	1	B011905830040
2	MTG;ANTI VIB PS3/HDS-CM1	6	22037506A
3	GASKT RADI-OIL COOL-1200-325V2	1	035400563
4	RADIATOR_1200-325 V2	1	B013603500371 Cummins Scope
5	SHROUD ASSY 1200_325 V2	1	035301871
6	FAN GUARD ASSY_DS1200-325 V2	1	035301911
7	ANTI.VIB 'O' MOUNT	2	B141412
8	BTM RCR PLATE_RAD_1200V2	1	035302399
9	BTM RCR PLATE_OC_1200V2	1	035302400
10	SHROUD TO BAIL CONN PIPE	2	035302328
11	BOLT HEX M8X25 8.8 ZYP 5-8M	12	000906116
12	BOLT HEX M10X30 8.8 ZYP 5-8M	22	000906145
13	BOLT HEX M10X35 8.8 ZYP 5-8M	16	000906146
14	BOLT HEX M10X40 8.8 ZYP 5-8M	12	000906147
15	NUT HEX M8	6	----
16	NUT HEX M12	2	000948012
17	WASHER PUNCHED M10	4	000996059
18	WASHER PLAIN M8	12	000996008
19	WASHER PLAIN M10	58	000996010
20	WASHER SPRING M10	50	000996110
21	WASHER SPRING M12	2	000996112
22	WASHER,SPRING,M8	12	000996108
23	NUT HEX M10,8 ZYP	34	000948010



LUBRICATION SYSTEM

LUBRICATION SYSTEM

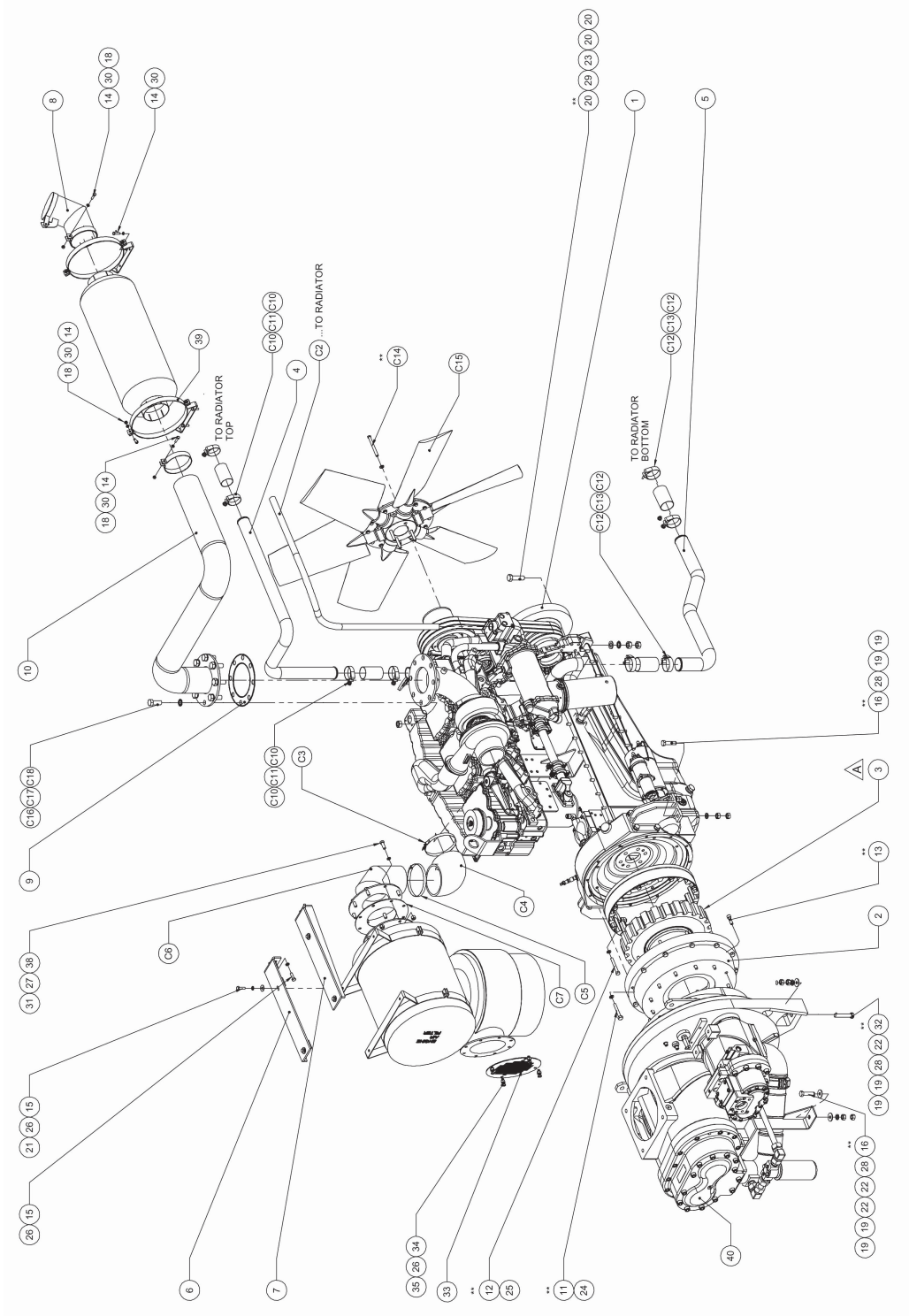
Part No.	Description	Qty.	Part Code
1	MOF MTG BRACKET DT1100-350 T2	1	035301633
2	SPIN ON FILTER ASSEMBLY 378,5 m	1	B489101
3	PIPE ASSY_TV8 TO OFB_2 STG	2	035301848
4	VALVE ASSY_O8V FLANG TYP_SS SV	1	035301814
5	THERMAL VALVE HOUSING 1200325	1	035301014
6	THERMAL VALVE ELEMENT - 185F	2	B008700460001
7	HOSE ASSY_I_STAGE-TWO STG MDL	1	035301634
8	HOSE ASSY 2nd STAGE DT1100-350	1	035301660
9	HOSE FOR OIL LUBRI DT1100-350	1	035301662
10	OIL INJ FLG 1st STAGE-2 STG MO	1	035301637
11	OIL INJ FLG_2nd STAGE-2 STG MO	1	035301638
12	TEE ASSEMBLY - DT 1100-350 T2	1	035301618
13	HOSE ASY-TEE TO OC-1200 325V2	1	035301868
14	HOSE TANK TO TEE_1200-325V2	1	035302402
15	PIPE CLAMP 1 1/2 INCH SHORT	2	035302122
16	PIPE CLAMP 1 1/2 INCH LONG	1	035302401
17	OSV TO INJ CONN PIPE	1	035302398
18	O-RING ID 18.64 x 3.53	1	015402993
19	O-RING ID 24.99 x 3.53	1	015403001
20	O RING ID 32.92 x 3.53	3	015402685
21	O RING ID 47.22 x 3.53	15	015400891
22	M22 BONDED SEAL WASHER	1	000959436



LUBRICATION SYSTEM

LUBRICATION SYSTEM

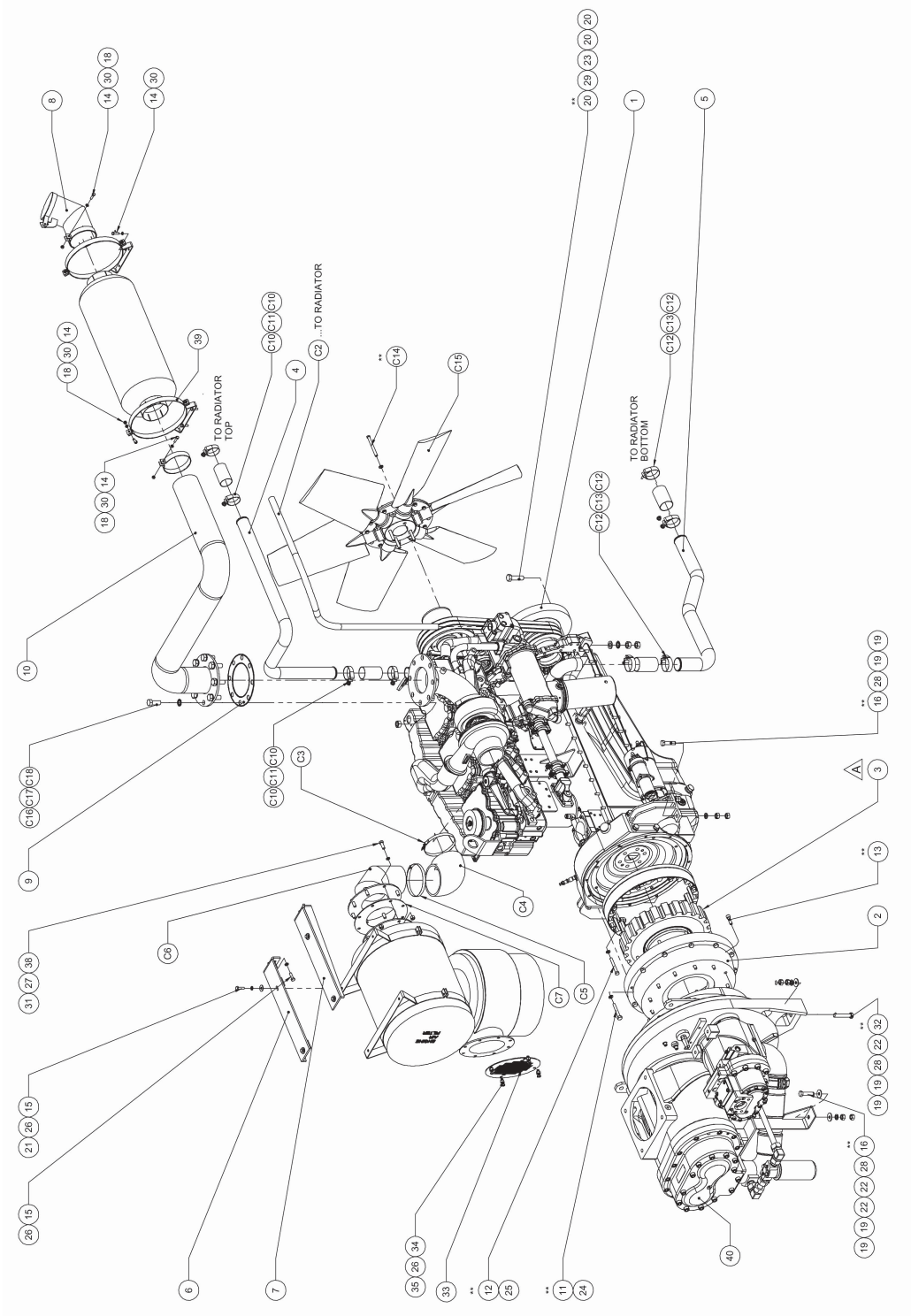
Part No.	Description	Qty.	Part Code
23	1 BSP BONDED SEAL WASHER VITON	1	000959439
24	BOLT HEX 1/2"UNCX1 3/4"	8	000907249
25	BOLT HEX 3/8"UNCX1"	4	000907226
26	BOLT HEX M8X20 8.8 ZYP 5-8M	12	000906115
27	BOLT HEX M8X40 8.8 ZYP 5-8M	2	000906119
28	Bolt Hex M16x40	8	000906214
29	BOLT HEX M12X40 8.8 ZYP 5-8M	23	000906185
30	NUT HEX M8	6	000948008
31	WASHER PUNCHED M10	4	000996059
32	WASHER PLAIN M12	3	000996012
33	WASHER SPRING M10	16	000996110
34	WASHER SPRING M12	37	000996112
35	WASHER,SPRING,M8	14	000996108
36	NUT HEX M10,8 ZYP	8	000948010
37	HOSE ASSY_OIL COOLER TO TV	1	035302866
38	PIPE SUPPORT BRKT_BOTTOM	1	035400655
39	PIPE SUPPORT BRKT_TOP	1	035400659
40	NUT HEX. M12	6	000948012
41	M12x50 Hex Bolt	6	000906187
42	BOLT HEX M10 x 35	4	000906146
43	WASHER,PUNCHED, M10	4	000996059
44	NUT HEX M10	2	000948010



DRIVE SYSTEM

DRIVE SYSTEM

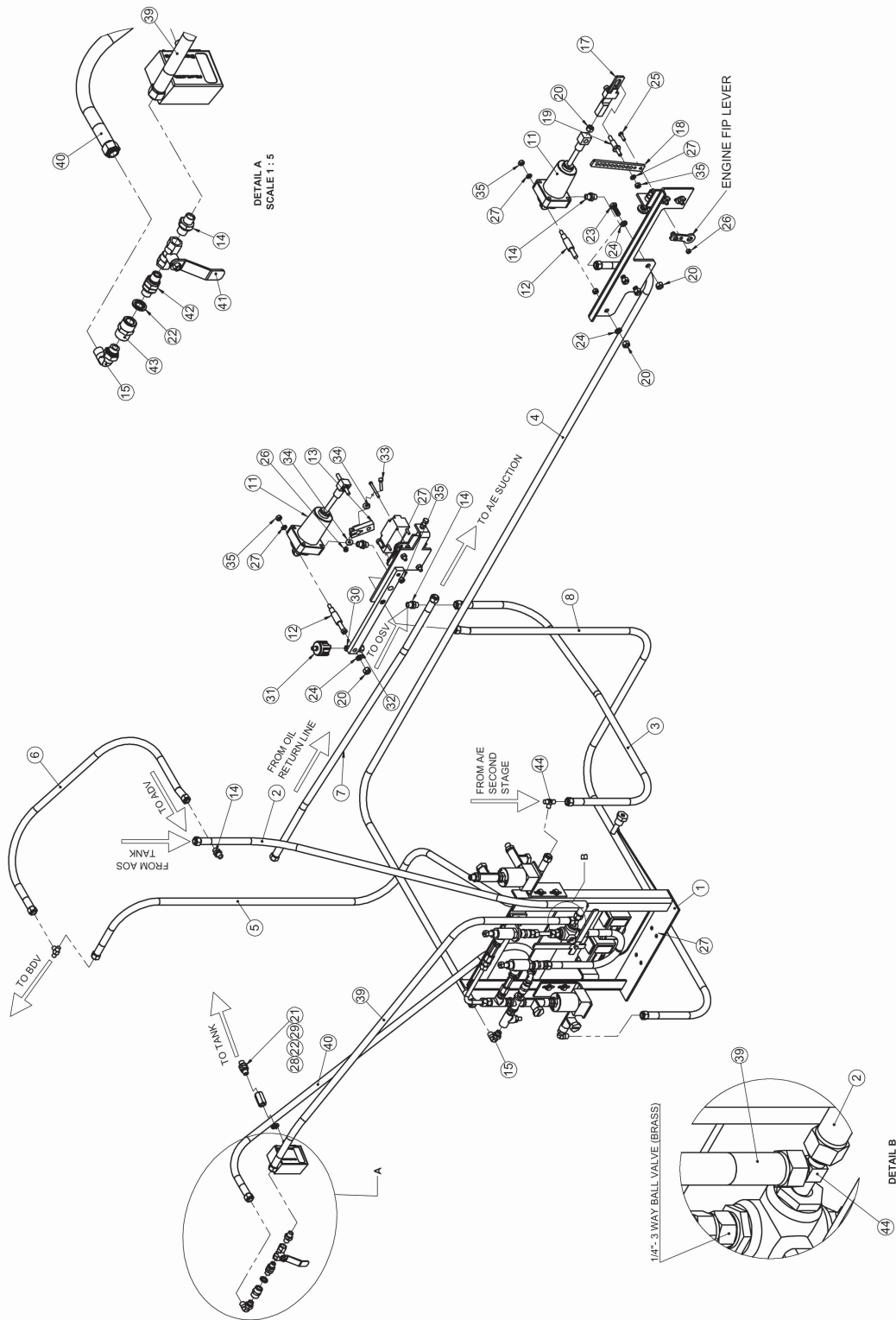
Part No.	Description	Qty.	Part Code
1	NTA 855 BC ENGINE	1	B009900890008
2	HOUSING ADAPTER M/C TWO STAGE	1	010289200
3	DRIVE COUPLING L2613-2800SERIS	1	B549003
4	INLET PIPE RADIATOR-1200-325 V2	1	035301976
5	OUTLETPPIPE RADIATOR-1200-325V2	1	035301977
6	BRKT ENGINE FILTER LH 1200-325 V2	1	035301891
7	BRKT ENGINE FILTER RH 1200-325 V2	1	035301889
8	EX. PIPE ASSY_SILE_1200-325-V2	1	035300643
9	GASKET_BELLOW_DT 1100-350 T2	1	035301788
10	EX.PIPE_ENG TO MUF_1200-325V2	1	035301919
11	BOLT HEX UNC 7/16" x 3-1/4"	12	000907265
12	BOLT HEX. 1/2" UNC x 3-1/2"	8	000947256
13	M12 x 40 SOC HD SCREW	12	000983145
14	BOLT HEX M8X30 8.8 ZYP 5-8M	9	000906117
15	BOLT HEX M10X35 8.8 ZYP 5-8M	8	000906146
16	BOLT HEX M16X60 8.8 ZYP 5-8M	6	000906218
20	BOLT HEX M20X70 8.8 ZYP 5-8M	2	000906247
18	NUT HEX M8	6	000948008
19	NUT HEX M16	16	000948016
20	NUT HEX M20	4	000948020
21	WASHER PLAIN M10	4	000996010
22	WASHER PLAIN M16	6	000996016
23	WASHER PLAIN M20	2	000996020
24	WASHER SPRING RCS 7/16"	12	000996211



DRIVE SYSTEM

DRIVE SYSTEM

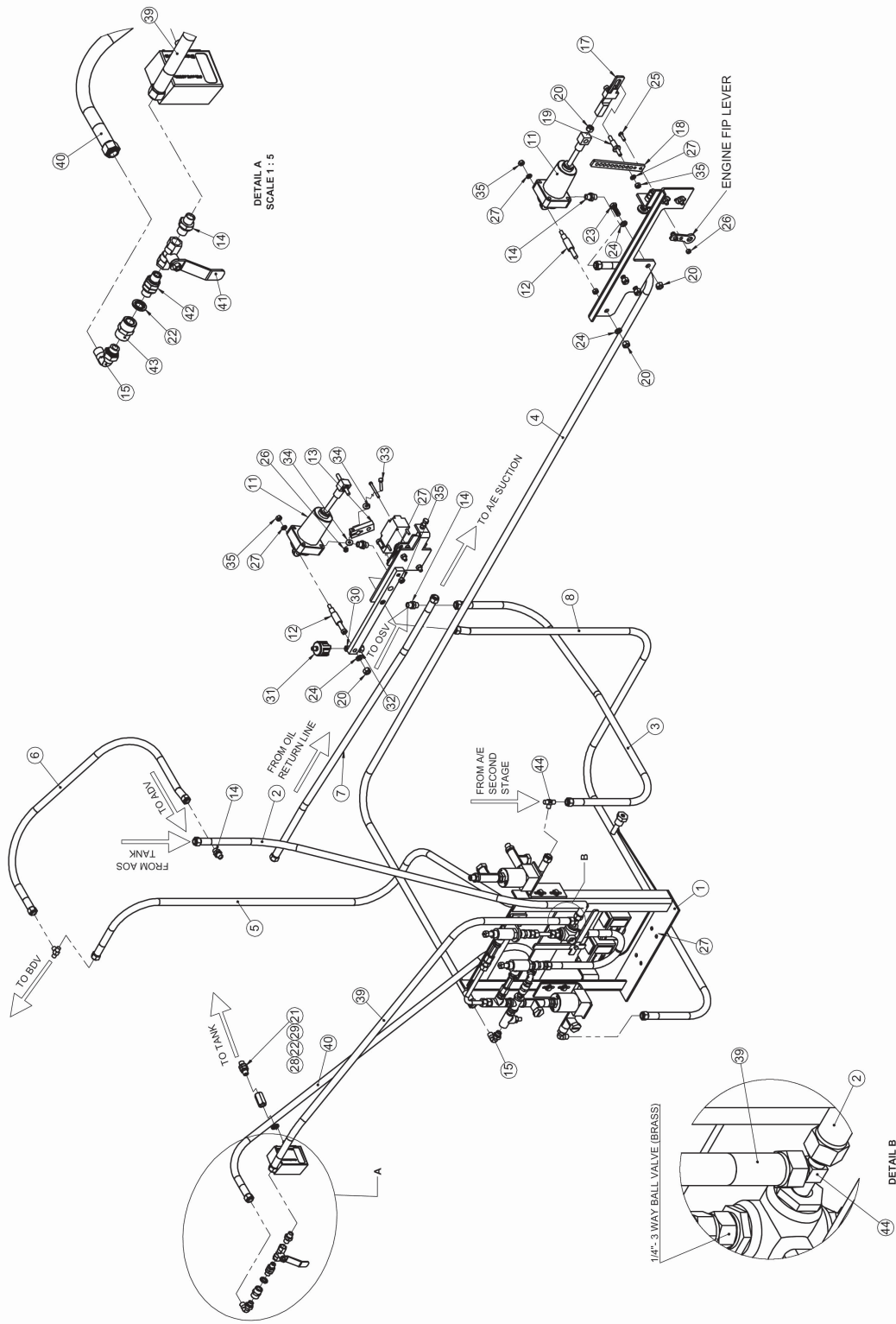
Part No.	Description	Qty.	Part Code
25	WASHER SPRING RCS 1/2"	12	000996205
26	WASHER SPRING M10	12	000996110
27	WASHER SPRING M12	8	000996112
28	WASHER SPRING M16	8	000996116
29	WASHER SPRING M20	2	000996120
30	WASHER,SPRING,M8	9	000996108
31	NUT HEX M12	8	000948012
32	Bolt Hex M16x65	2	000906224
33	AIRFILTER MESH	1	035302548
34	BOLT HEX M10X30 8.8 ZYP 5-8M	4	000906145
35	NUT HEX M10	4	000948010
36	1200-325 V2 FAN	1	CUMMINS SCOPE
37	HEX BOLT 1/2" UNC 6" LENGTH	4	CUMMINS SCOPE
38	BOLT HEX. M12x35	8	000906184
39	SILENCER MTG CLAMP 1100-300 V2	2	035302476
40	AXIS 284-159 TWO STAGE AE	1	X990370



CONTROL SYSTEM

CONTROL SYSTEM

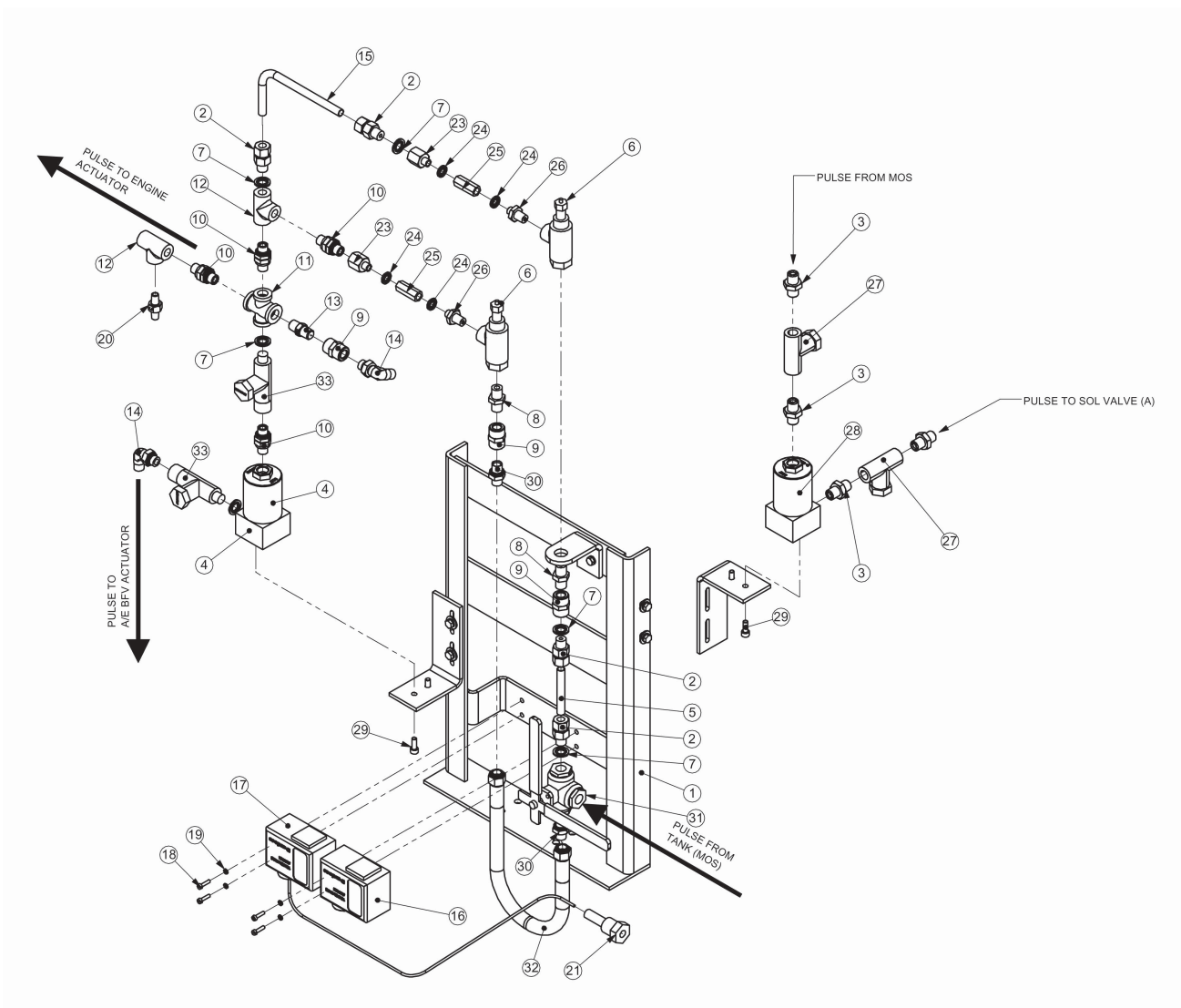
Part No.	Description	Qty.	Part Code
1	CONRADER COMBO CS	1	035303700
2	HOSE TANK TO CS	1	22037908E
3	HOSE A/E TO OSV	1	22037908D
4	HOSE CS TO ENGINE ACTUATOR	1	22037908G
5	HOSE A/E TO BDV	1	22037908F
6	HOSE BDV TO ADV	1	22037908A
7	HOSE OIL RETURN LINE TO A/E SUCTION	1	22037908B
8	HOSE FROM CS TO BFV ACTUATOR	1	22037908F
9	HOSE TANK TOP TO PR-GAUGE.	1	22037908E
10	PLATE ACTUATOR	1	220473620
11	ACTUATOR ASSEMBLY	2	A030006
12	PIN ACTUATOR	2	220473650
13	LEVER ACTUATOR INLET	1	22047366A
14	HEX NIPPLE 1-4 IN BSP WTH ORNG	5	B009606360007
15	ELBOW MALE 1-4 IN BSP WTH ORING	2	B009606360008
16	PLUNGER BRACKET-1200V2	1	035303173
17	FIP SLIDER ASSY	1	035303211
18	LEVER; EXTENSION; DPSAC	1	220475310
19	ENGINE ACTUATOR PIN	1	035400717
20	M10 HEX NUT	6	000948010
21	1/4 INX1/4 BSP HEX NIPPLE	1	015306564
22	1/4 BSP BONDED SEAL WASHER	2	000959385
23	BOLT HEX M10 X 30	3	000906145
24	WASHER, SPRING, M10	5	000996110
25	BOLT; HEX; M6x20 8.8 ZYP	2	000906086



CONTROL SYSTEM

CONTROL SYSTEM

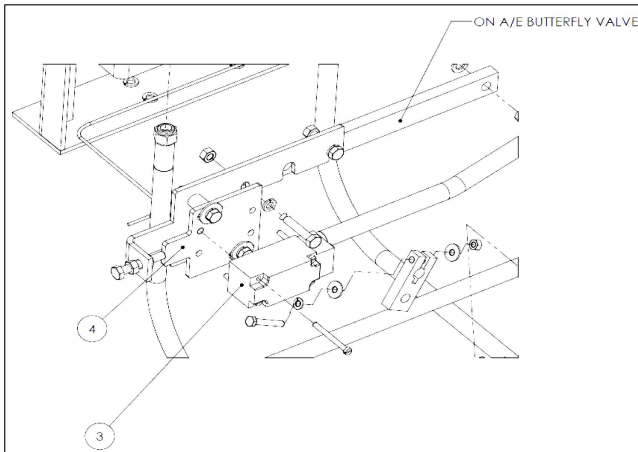
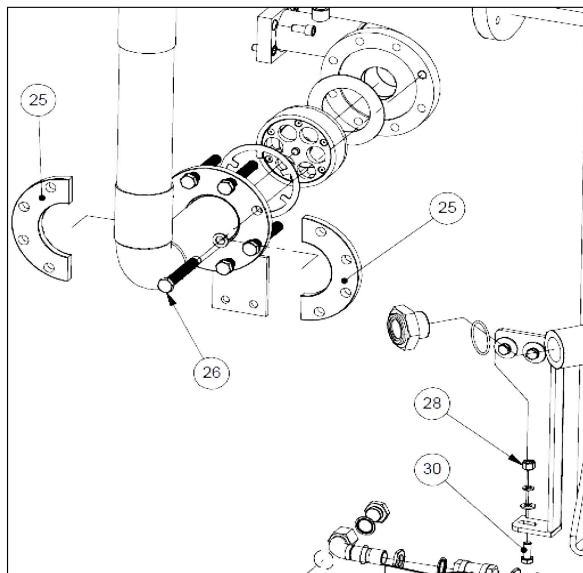
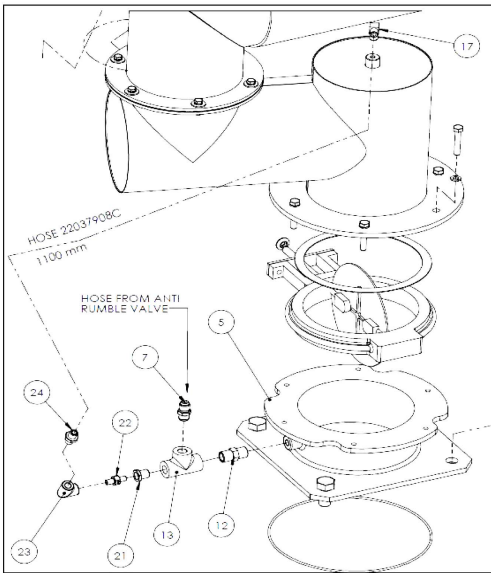
Part No.	Description	Qty.	Part Code
26	M6 HEX NUT	3	000948007
27	WASHER,SPRING,M8	9	000996108
28	PR. SWITCH 8-32 BAR;060-1171	1	B185104
29	ADAPTER NUT 1/4 Gx7/16 UNF	1	015402880
30	COM LOW OIL PRESS SWITCH 6 BAR	1	038400033
31	BOOT FOR PRESSURE SWITCH	1	038400036
32	BUSH; REDU; ADAP; 1/4"X1/8"NPT	1	22037897A
33	M6 X 40 HEX BOLT	1	000906090
34	PLAIN WASHER, M6	2	000906006
35	M8 HEX NUT	10	000948008
36	BOLT;HEX;M8x20 8.8 ZYP	2	000906115
36	BOLT;HEX;M8x20 8.8 ZYP	2	000906115
37	LIMIT SWITCH	1	038360230
38	LIMIT SWITCH MTG BKT	1	035303431
39	HOSE ASSY; 1/4"X1300MM	1	22037908D
40	HOSE ASSY; 1/4"X1300MM	1	22037908D
41	1/4"BSP (SS) BALL VALVE	1	B313801
42	1/4"X1/4" - HEX REDUCING NIPPLE	1	015306564
43	G1/4 SOCKET (BSP)	1	015401830
44	RUN TEE 1/4" NPT	2	000959107



CONDRADER SYSTEM

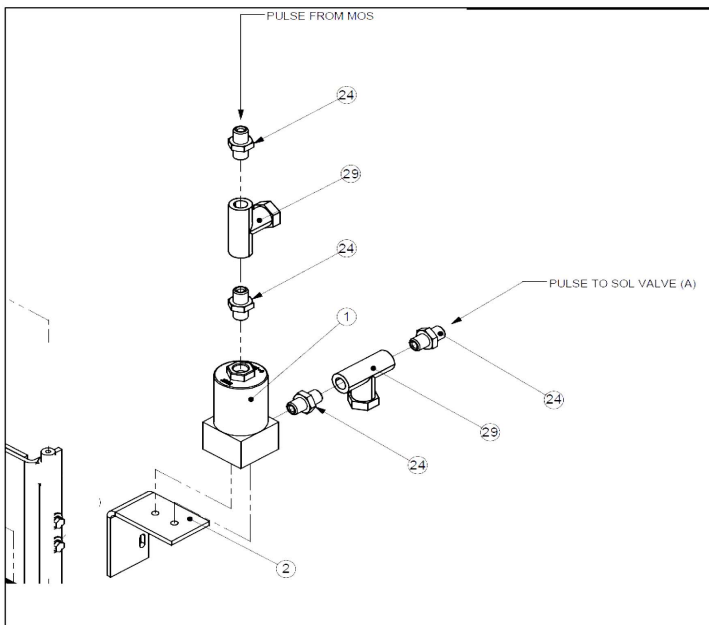
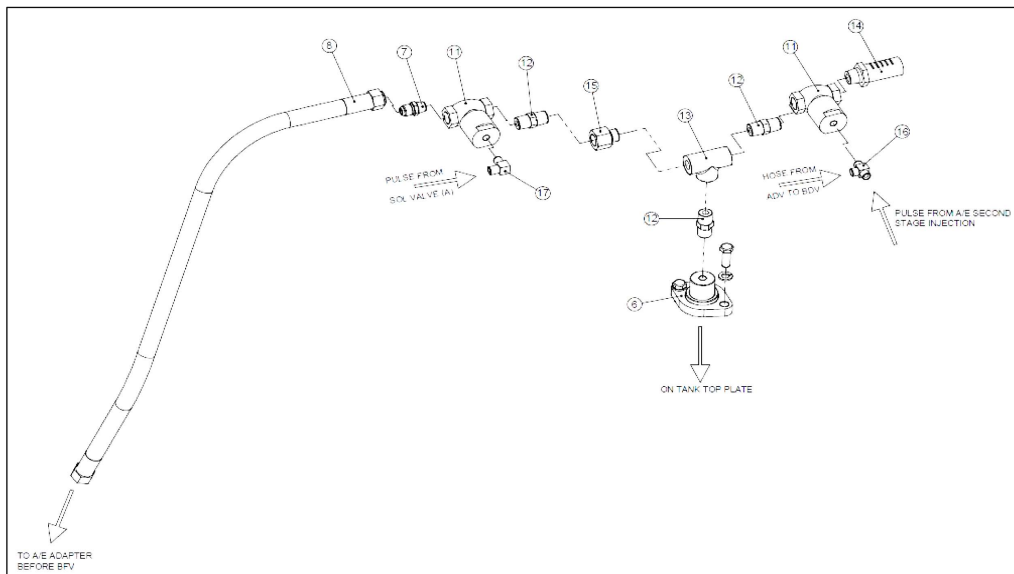
CONDRADER SYSTEM

Part No.	Description	Qty.	Part Code
1	CONTROL SYSTEM BRACKET	1	035303174
2	PARALLEL MSC 1/4 BSP X 10 MM	4	B010506360012
3	ADAPTER; HOSE; 1/4" BSP X 1/4" NPT	4	220370680
4	SOL VALVE DC 2/2 32 BAR	1	038400041
5	CS TUBE-3	1	035303178-3
6	PR-REGULATOR CONDADER	2	B001506860001
7	1/4 BSP BONDED SEAL WASHER	6	
8	NIPPLE; HEX; 3/8"X1/4"	2	22037904A
9	G1/4 SOCKET (BSP)	3	015401830
10	1/4"X1/4" - HEX REDUCING NIPPLE	4	015306564
11	1-4 BSP FEMALE EQUAL CRS ADPTR	1	B009606360014
12	TEE CONNECTOR 1/4 INCH	2	015402676
13	HEX. NIPPLE WITH 1MM ORIFICE	1	035400636
14	ELBOW MALE 1-4 INBSP WTH ORING	2	B009606360008
15	CS-TUBE-1	1	035303178-1
16	TL999LLX1X0034BSTDO10 VT TSW	1	B171901
17	TL999LLX1X0034BSTDO10 VT TSW	1	B171901
18	SCR CH M4X16 8.8	4	000983485
19	WASHER, SPRING, M4	4	000996104
20	ORIFICE, OIL RETURN 1.5mm	1	035400625
21	ADAPTER; TEMP SWITCH VT-TL999L	2	030449400
22	1/4"X1/8" Hex.Nipple Wih Lock Nut & O ring	1	015306565
23	ADAPTER 1/8 BSP(M)x1/4 BSP(F)	2	015400398
24	1/8 BSP BONDED SEAL WASHER	4	000959381
25	Non return Valve 1/8 inch	2	B009801880001
26	1/4" NPTX1/8" BSP RED NIPPLE	2	B010506360045
27	STAINER ASSY.	2	A010016
28	SOL VALVE DC 2/2 32 BAR	1	B007300990015
29	SCR SOC HD M6X16 10.9 ZYP 5-8u	4	000983062
30	HEX NIPPLE 1-4 IN BSP WTH ORNG	2	B009606360007
31	1/4"- 3 WAY BALL VALVE (BRASS)	1	B003106100002
32	HOSE ASSY; 1/4"X450MM	1	22037908H
33	STAINER ASSY.	2	A010016



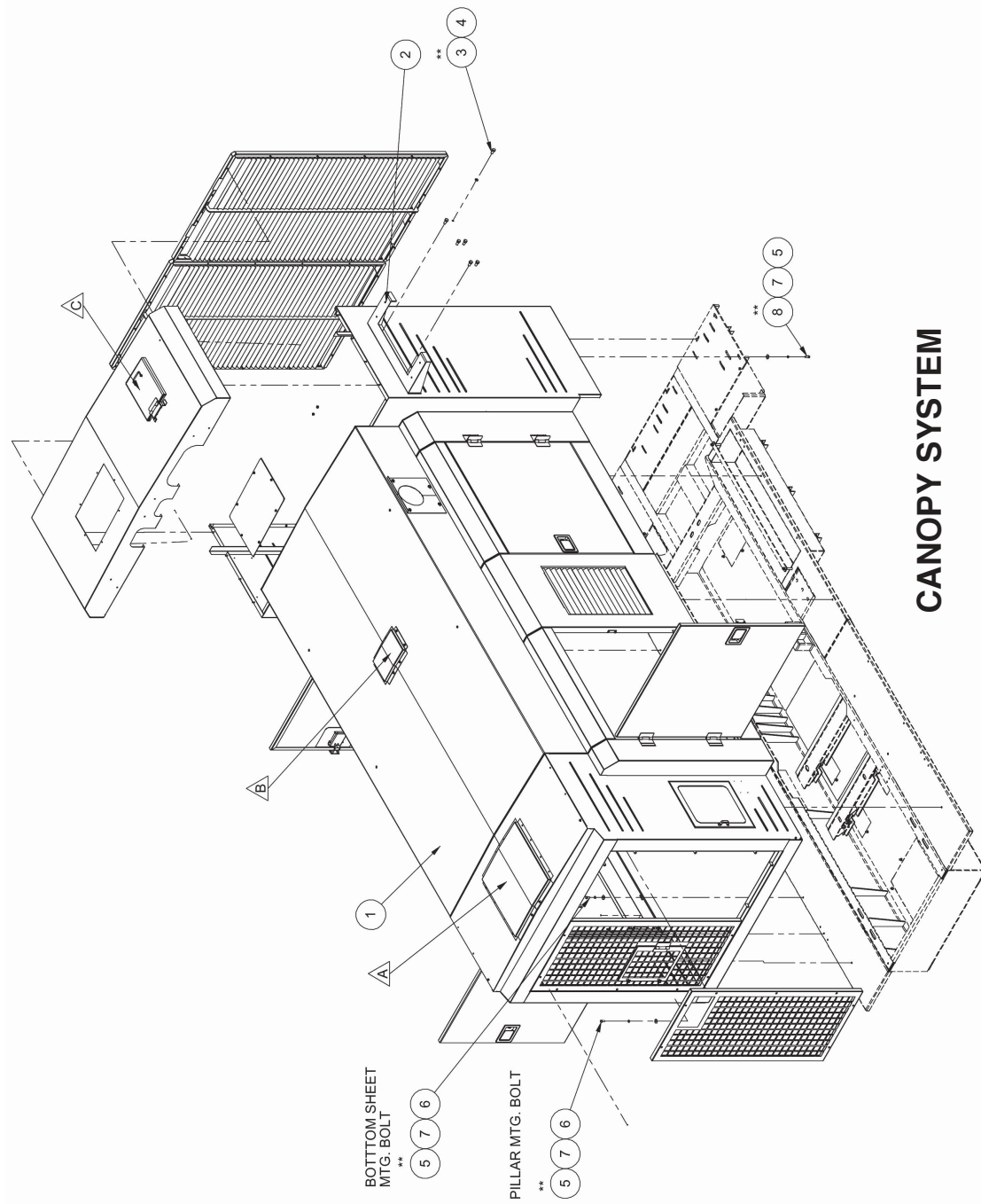
ANTI RUMBLING SYSTEM

Part No.	Part Code	Description	Qty.
1	B007300990015	3/2 NO SOL VAL 24VDC 0-32BAR	1
2	035400828	SOL VALVE BRACKET	1
3	038360230	LIMIT SWITCH	1
4	035303431	LIMIT SWITCH MTG BKT	1
5	035300637	AIR INLET ADAPTER	1
6	035303399	BDV FLANGE	1
7	22343137C	CONN 37FL/M 7/8UNFX1/2NPT	2
8	015400998	HOSE ASSY 1/2x1000	1
9	008985025	GLAND	1
10	(220460450)	A010042 BLOW DOWN VALVE 1/2"	2
11	22037903C	NIPPLE; HEX; 1/2"NPT	4
12	22047680C	TEE; PIPE; 1/2"NPT	2
13	035400226	SILENCER, BLOW DOWN , 1/2 NPT	1
14	015401815	ADAPTER G 1/2 WITH 5MM ORIFICE	1
15	000959107	BRANCH TEE HOSE ADAP.1/4"NPT	2
16	000959083	HOSE ADAP.90DEG1/4"NPTX1/4"BSP	2
17	000983062	SCR SOC HD M6X16 10.9 ZYP 5-8u	2
18	22037908C	HOSE ASSY; 1/4"X1100MM	2
19	22037908E	HOSE ASSY; 1/4 inch X1500MM	1
20	22037897E	BUSH; REDU; ADAP; 1/2"X1/4"NPT	1
21	220417210	ORIFICE, DIA 2.2	1
22	22047677A	ELBOW; PIPE; 90'; 1/4"NPT	1
23	220370680	ADAPTER; HOSE; 1/4"BSPX1/4"NPT	5
24	035400824	COUNTER WEIGHT SET	1
25	000906226	BOLT HEX M16X110	8
26	000928312	NUT NYLOC M12	1
27	A010016	STRAINER ASSY, ORL, 1/4"NPT	2
28	000906183	M12 X 30 HEX BOLT	1



ANTI RUMBLING SYSTEM

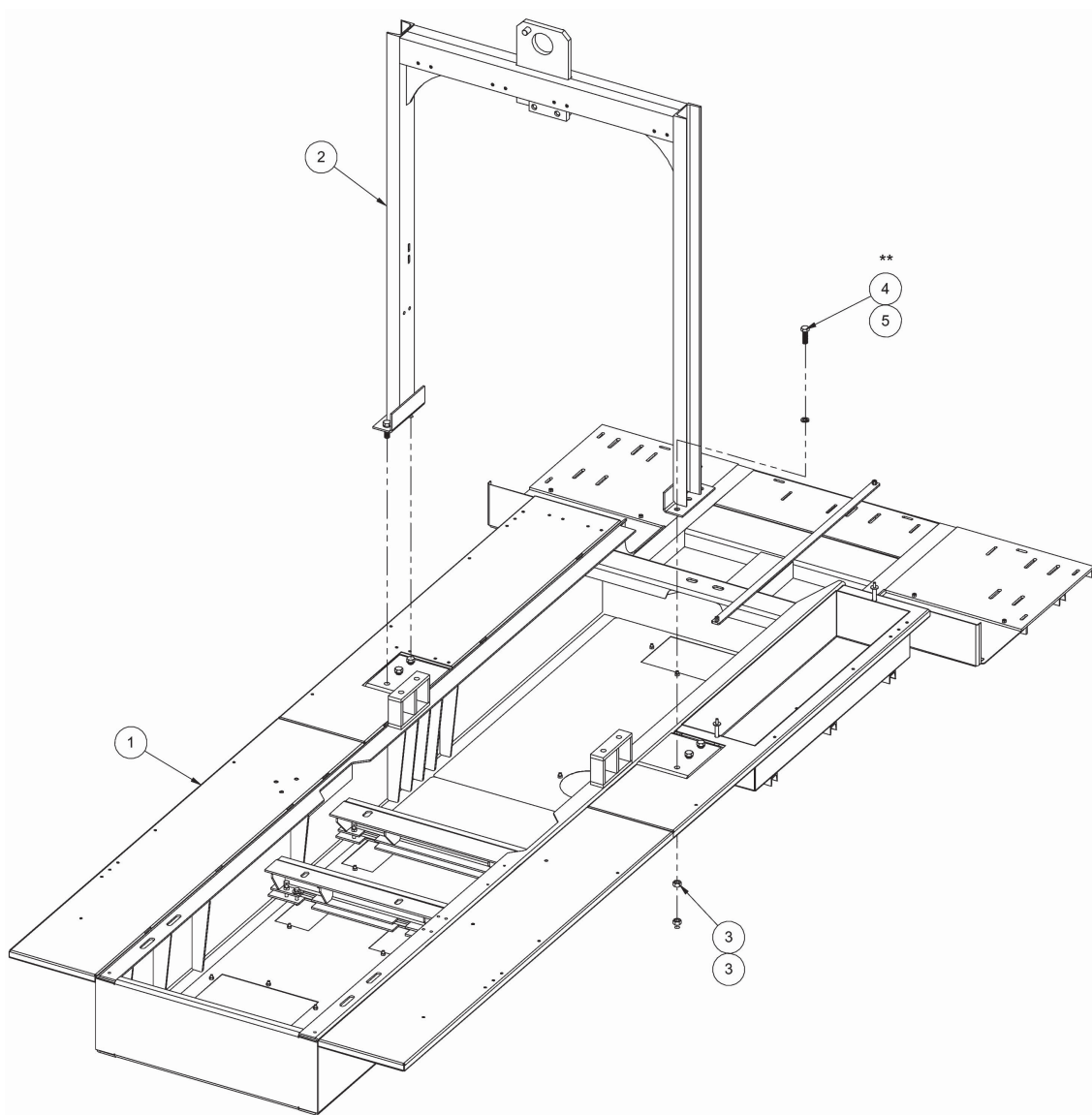
Part No.	Part Code	Description	Qty.
1	B007300990015	3/2 NO SOL VAL 24VDC 0-32BAR	1
2	035400828	SOL VALVE BRACKET	1
3	038360230	LIMIT SWITCH	1
4	035303431	LIMIT SWITCH MTG BKT	1
5	035300637	AIR INLET ADAPTER	1
6	035303399	BDV FLANGE	1
7	22343137C	CONN 37FL/M 7/8UNFX1/2NPT	2
8	015400998	HOSE ASSY 1/2x1000	1
9	008985025	GLAND	1
10	(220460450)	A010042 BLOW DOWN VALVE 1/2"	2
11	22037903C	NIPPLE; HEX; 1/2"NPT	4
12	22047680C	TEE; PIPE; 1/2"NPT	2
13	035400226	SILENCER, BLOW DOWN , 1/2 NPT	1
14	015401815	ADAPTER G 1/2 WITH 5MM ORIFICE	1
15	000959107	BRANCH TEE HOSE ADAP.1/4"NPT	2
16	000959083	HOSE ADAP.90DEG1/4"NPTX1/4"BSP	2
17	000983062	SCR SOC HD M6X16 10.9 ZYP 5-8u	2
18	22037908C	HOSE ASSY; 1/4"X1100MM	2
19	22037908E	HOSE ASSY; 1/4 inch X1500MM	1
20	22037897E	BUSH; REDU; ADAP; 1/2"X1/4"NPT	1
21	220417210	ORIFICE, DIA 2.2	1
22	22047677A	ELBOW; PIPE; 90'; 1/4"NPT	1
23	220370680	ADAPTER; HOSE; 1/4"BSPX1/4"NPT	5
24	035400824	COUNTER WEIGHT SET	1
25	000906226	BOLT HEX M16X110	8
26	000928312	NUT NYLOC M12	1
27	A010016	STRAINER ASSY, ORL, 1/4"NPT	2
28	000906183	M12 X 30 HEX BOLT	1



CANOPY SYSTEM

CANOPY SYSTEM

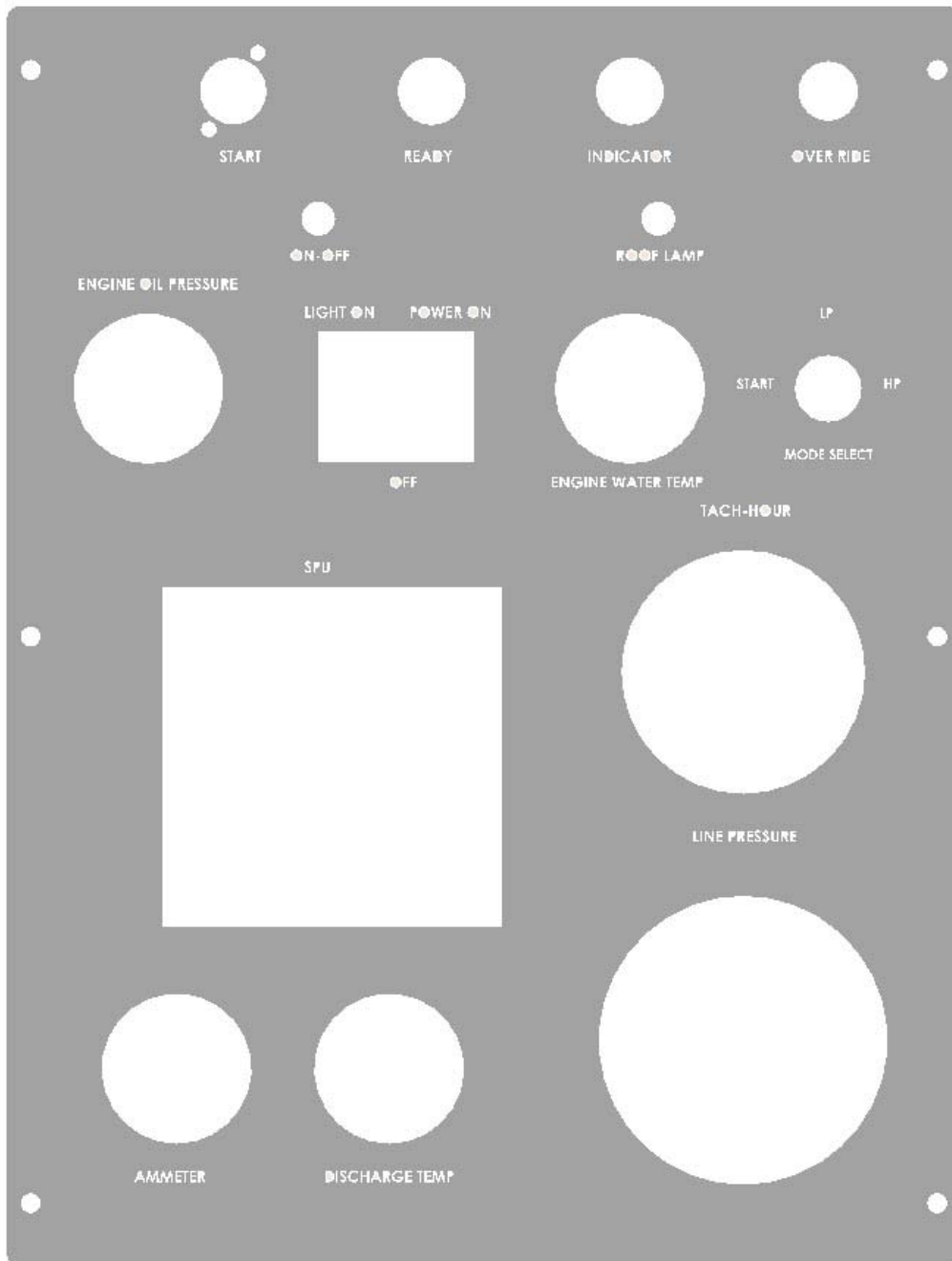
Part No.	Description	Qty.	Part Code
1	CANOPY ASSEMBLY_1200-325 V2	1	035302174
2	SILENCER BTM MTG BRKT 1100-350	1	035301666
3	BOLT HEX M12 X 25	6	000906182
4	WASHER,SPRING,M10	6	000996110
5	WASHER,PLAIN M8 ZYP	26	000996008
6	BOLT HEX M8 X 20	26	000906115
7	WASHER,SPRING,M8	34	000996108
8	BOLT HEX M8X25 8.8 ZYP 5-8M	8	000906116



BASE SYSTEM

BASE SYSTEM

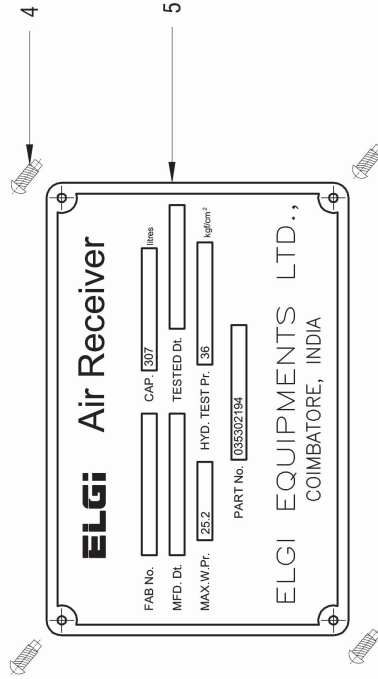
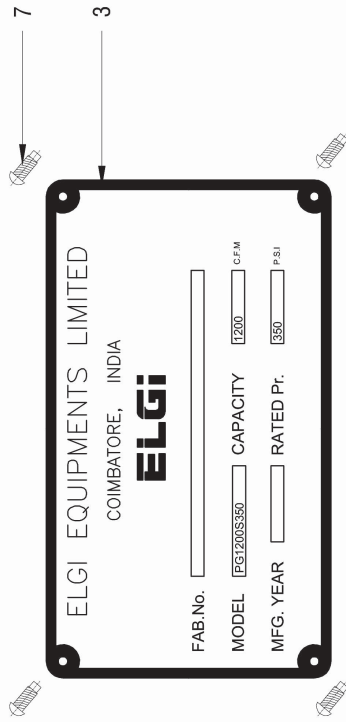
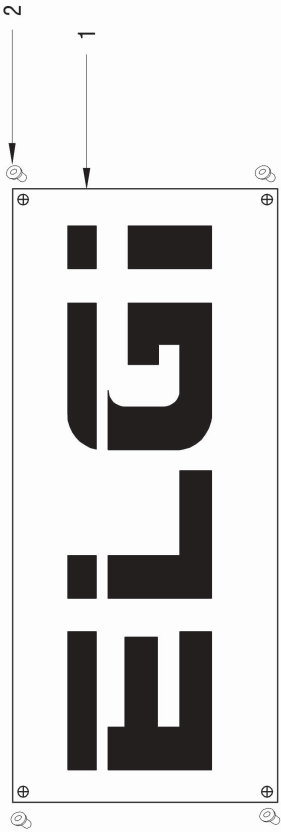
Part No.	Description	Qty.	Part Code
1	BASE ASSY-1200-325-V2	1	035301915
2	LIFTING HOOK ASSY DT1100-350	1	035302423
3	NUT HEX;M16	12	000948016
4	BOLT HEX M16X50 8.8 ZYP	6	000906216
5	WASHER,SPRING,M16	6	000996116



INSTRUMENTATION SYSTEM

INSTRUMENTATION SYSTEM

Part No.	Description	Qty.	Part Code
1	BOLT; HEX; M8x25 8.8 ZYP	6	000906116
2	NUT; HEX; M8; ZYP	6	000948008
3	WASHER SPRING REC SEC M8	6	000996108
4	ADAPTER; HOSE; 1/4"BSPX1/4"NPT	1	220370680
5	BOLT; HEX; M6x20 8.8 ZYP	10	000906086
6	BOLT HEX M8X20 8.8 ZYP 5-8M	21	000906115
7	ELBOW; PIPE; 90'; 1/4"NPT	1	22047677A
8	WASHER SPRING REC SEC M6	10	000996106
9	PR.GAUGE 4" DIAL 0-40	1	B218805
10	TEMP GAUGE 40-125 DEG C	1	B202101
11	PANEL BOARD	1	035301351



CONSUMABLE SYSTEM

CONSUMABLE SYSTEM

Part No.	Description	Part Code	Qty.
1	NAME PLATE ALL DPSAC	030449390	1
2	POPPER RIVET ALUMINIUM 3.8x14	000910001	4
3	PLATE; NAME; ENG.	220413340	1
4	RIVET DIA2.5X6.5 NAME PLATE	000519530	4
5	PLATE NAME AIR REC SS	000420930	1
6	DECAL	035400623	1
7	POP RIVET ALU DIA3x14	000910002	4
8	RUBBER BEEDING ABB TELK 50x6	000468500	3 meters

PG1200S - Combo 350 INT'L (TPL : S03180)**Discharge System**

Part No.	Description	Qty.	Part Code
1	AIR OIL SEPERATOR Tank 1200-350 T2	1	035303005
6	OIL RETURN LINE ASSEMBLY_T2	1	035303114
34	OUTLET MANIFOLD ASSY_T2	1	035303081

Lubrication System

Part No.	Description	Qty.	Part Code
14	HOSE ASSY_ TANK TO TEE_T2	1	035303112

Drive System

Part No.	Description	Qty.	Part Code
1	NTA 855 EXPORT ENGINE	1	B009900890010

Note : Above provided is the differing parts list compared with PG1200S-Combo 350(Domestic) for PG1200S-Combo 350(International) product. Please refer the respective systems in parts Manual for the BOM.

PG1200S - 330 (TPL : S03195)

REMOVE

Description	Qty.	Part No.
1/4 INX1/4 BSP HEX NIPPLE	3	015306564
NON RETURN VALVE 1/4 GV161	1	B009801880001
PARALLEL MSC 1/4 BSP X 10 MM	1	B010506360012
PR REGULATOR_CONRADER	1	B001506860001
NIPPLE; HEX; 3/8"X1/4"	1	22037904A
G1/4 SOCKET	1	015401830
ELBOW 1/4"BSP HV20/25/30/40	1	000441040

ADD

Description	Qty.	Part No.
Closure plug G1/4	2	B010506360010

Consumable System

Part No.	Description	Qty.	Part No.
6	Decal PG 1200S-330	1	035400696

Note : Above provided is the differing parts list compared with PG1200S-Combo 350 for PG1200S - 330 product. Please refer the respective systems in parts Manual for the BOM.

PG1100S - 300 (TPL : S03199)

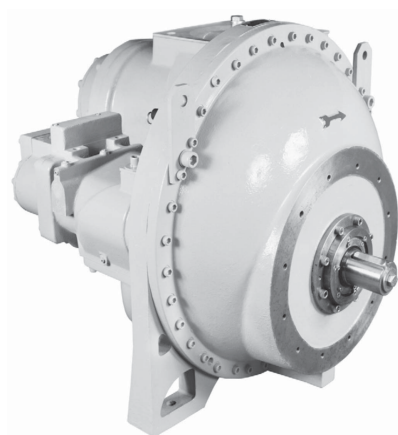
Drive System			
Part No.	Description	Qty.	Part Code
40	AXIS 284-159 TWO STAGE AE	1	X990063

REMOVE			
	Description	Qty.	Part No.
	1/4 INX1/4 BSP HEX NIPPLE	3	015306564
	NON RETURN VALVE 1/4 GV161	1	B009801880001
	PARALLEL MSC 1/4 BSP X 10 MM	1	B010506360012
	PR REGULATOR_CONRADER	1	B001506860001
	NIPPLE; HEX; 3/8"X1/4"	1	22037904A
	G1/4 SOCKET	1	015401830
	ELBOW 1/4"BSP HV20/25/30/40	1	000441040

ADD			
	Description	Qty.	Part No.
	Closure plug G1/4	2	B010506360010

Drive System			
Part No.	Description	Qty.	Part Code
6	DECAL PG1100S-300	1	035400700

Note : Above provided is the differing parts list compared with PG1200S-Combo 350 for PG1100S - 300 product. Please refer the respective systems in parts Manual for the BOM.



**AIREND PACKAGE
(TWO STAGE 284/159 AIREND AXIS)**

AIREND PACKAGE

S. No	Model	Description	Package
1	Model PG 1200 series Package NTA 855 C Engine	A/E PKG GR.1.16/1.66 284/159	X990370
2	Model PG 1100 - 300 Package NTA 855 C Engine	A/E PKG GR.1.128/1.66 284/159	X990063

Recommended Spares

SL.No.	DESCRIPTION	ELGI PART NO	Qty
1	Kit, Air Filter	B005700730003	1 Set
2	Kit, Spin On filter	B679102	2 Nos
3	Air Oil Separator Element (1500 hours Only)	B006700770006	1 No
4	AOS gasket	B006700770032	2 NO
5	Pressure Regulator 1/4"	B001506860001	2 No
6	Drain Valve Assy - 1/4"	B139201	1 Set
7	Minimum Pressure Valve -KIT 1	B009300800006	1 Set
	-KIT 2	B009300800007	1 Set
8	SPRING- Discharge check Valve 3"	03250002	1 No
9	Kit, Valve Oil Stop 1 1/2"	220310329	1 Set
10	Kit, Actuator Single Acting	220271909	1 No
11	Kit, Valve Blow Down 1 1/2"	220322889	1 No
12	Oil Filter Element (Air End)	B004800770001	1 No
13	Drive Coupling L2613-2800SERIS	B549009	1 No
14	MOF Visual Indicator	B011103590001	1 No

Dew Point Temperature Chart for Air

AMBIENT	-15	-10	-5	0	5	10	20	30	35	40	45	
RH	Pr.											
30	60	0	0	0	2	2	12	23	33	39	45	51
30	100	0	0	3	10	10	21	31	43	49	55	61
30	150	0	3	10	16	16	26	39	51	58	64	71
30	215	0	9	14	22	22	33	47	59	66	73	80
30	250	2	11	17	25	25	36	50	63	69	76	82
30	300	5	13	20	26	26	40	53	67	74	81	87
30	350	0	16	23	29	29	43	56	71	78	84	91
40	60	0	0	0	7	7	17	27	39	45	51	56
40	100	0	2	8	14	14	26	37	49	55	61	68
40	150	0	0	13	21	21	32	45	57	64	71	77
40	215	4	12	19	26	26	39	52	66	73	80	86
40	250	7	15	22	28	28	42	55	69	76	82	90
40	300	10	18	25	32	32	46	59	74	81	87	95
40	350	11	21	26	35	35	49	63	77	84	91	99
50	60	0	0	3	10	10	21	31	43	49	55	61
50	100	0	5	11	18	18	28	41	53	60	66	73
50	150	2	11	12	25	25	36	50	62	69	76	82
50	215	8	16	23	30	30	44	57	71	78	84	92
50	250	10	19	26	33	33	47	60	74	81	88	96
50	300	12	22	27	36	36	51	64	79	86	93	101
50	350	15	25	30	39	39	53	68	82	90	98	105
60	60	0	0	6	12	12	24	35	47	52	59	65
60	100	0	8	13	21	21	32	45	57	64	70	77
60	150	5	13	20	26	26	40	53	67	73	80	86
60	215	11	20	26	33	33	47	61	75	81	89	96
60	250	12	22	27	36	36	51	64	79	85	93	101
60	300	15	25	31	40	40	54	69	83	90	98	106
60	350	18	26	34	43	43	57	72	87	95	102	110

Dew Point Temperature Chart for Air

AMBIENT	-15	-10	-5	0	5	10	20	30	35	40	45	
RH	Pr.											
70	60	0	2	9	15	15	26	38	50	56	62	68
70	100	1	10	16	23	23	35	48	61	67	74	81
70	150	8	16	23	29	29	43	56	70	77	83	90
70	215	12	22	27	36	36	51	64	79	85	93	100
70	250	15	25	30	39	39	53	68	82	89	97	104
70	300	18	26	34	43	43	57	72	87	94	102	110
70	350	20	29	37	46	46	61	76	91	99	106	114
80	60	0	4	11	17	17	27	40	52	58	65	71
80	100	3	11	18	26	26	38	51	64	70	77	83
80	150	10	18	25	32	32	46	59	73	80	86	94
80	215	14	25	30	39	39	53	67	81	89	96	104
80	250	17	26	33	42	42	56	71	85	93	101	108
80	300	20	29	37	46	46	60	75	90	98	106	113
80	350	23	32	40	49	49	64	79	94	102	110	118
90	60	0	6	11	19	19	30	43	55	61	67	74
90	100	5	13	20	26	26	40	53	66	73	80	86
90	150	11	20	26	34	31	48	62	76	82	89	97
90	215	16	26	32	41	41	55	70	84	92	99	107

How to use Dew point chart.

For example :-

You are having PG1200S-Combo 350 / PG1200S-330 / PG 1100S-300 compressor running with an ambient of 35° C and local relative humidity of 80%. It means your compressor should run minimum of 94° C irrespective of loading / unloading mode. This is to improve Separator/Oil//Oil filter life. Basically in our system, the dew point is controlled by thermal valve elements. If the discharge Air-Oil temperature is maintained below dew point temperature. Please contact Elgi dealer or Elgi office for assistance and for rectification.

